

Building Great Places

Development Update - Infrastructure, amenities and facilities at Windsor Gate

We take pride in what we do and work hard to deliver developments our customers will enjoy living in.

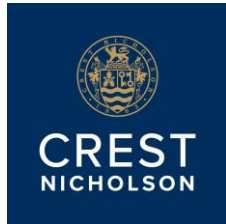
As well as building high quality homes, our developments are designed to include the necessary infrastructure, useful amenities, leisure facilities and green open spaces.

The table below gives details of the works which are in progress and will be delivered at Windsor Gate. The works are also shown on the plan below.

The timescales provided for completion of works are indicative and may be subject to change based on external market factors.

For information on progress of these works please check the Development website accessed via www.crestnicholson.com

Dec 2025 – Updated Quarterly



Building Great Places

Development Update - Infrastructure, amenities and facilities at Windsor Gate

Schedule of Remaining Works to Parcel

Plan Ref	Description	Remaining Works	Is a Third Party Responsible for Completing?	Forecast Date for Works Completion
1	Play Area	• Construct Play Area	No	Q2 2026
2	Estate Road	• Construct Road	No	Q4 2027
3	Spine Road	• Construct Road	No	Complete
4	Spine Road	• Construct Road	No	Q4 2026
5	Car Park	• Construct Car Park	No	Complete
6	Spine Road	• Construct Road	No	Complete
7	Spine Road	• Construct Road	No	Complete
8	Estate Road	• Construct Road	No	Complete
9	Estate Road	• Construct Road	No	Complete
10	Public Open Space & Drainage Basin	• All public open space works to be completed including hard and soft landscaping	No	Complete
11	Allotments	• Construct allotments	No	Complete
12	Play Area	• Construct play area	No	Complete
13	Pumping Station	• Construct Pumping Station	No	Complete
14	Trim Trail Equipment	• Construct trim trail equipment	No	Q1 2026
15	Public Open Space	• Complete hard and soft landscaping	No	Complete
16	Spine Road	• Construct Road	No	Complete
17	Spine Road	• Construct Road	No	Q3 2026
18	Estate Road	• Construct Road	No	Q3 2026
19	Estate Road	• Construct Road	No	Q4 2027
20	Spine Road	• Construct Road	No	Q4 2027

Dec 2025 – Updated Quarterly



Building Great Places

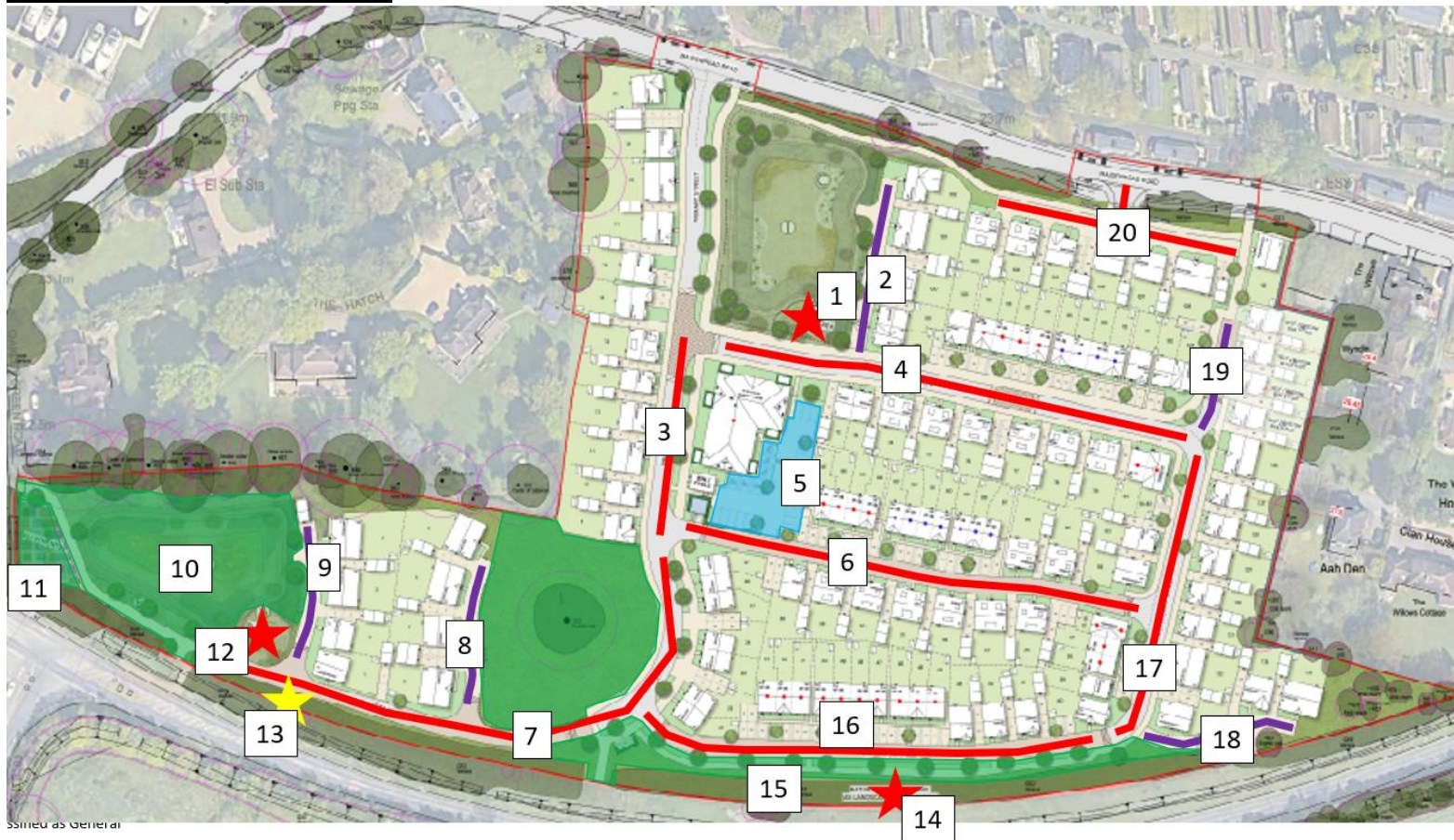
Development Update - Infrastructure, amenities and facilities at Windsor Gate

- The estate management company will also be responsible for maintaining small areas of incidental landscaping and shared drive accesses for a small number of properties. These items are not included on the above schedule due to their more limited nature and use, however they will be completed alongside the adjacent homes.

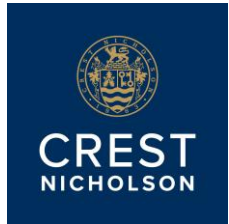
Building Great Places

Development Update - Infrastructure, amenities and facilities at Windsor Gate

Parcel Remaining Works Plan



Dec 2025 – Updated Quarterly



Building Great Places

Development Update - Infrastructure, amenities and facilities at Windsor Gate

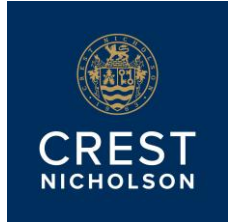
Schedule of Remaining Works to Wider Estate

Plan Ref	Description	Remaining Works	Is a Third Party Responsible for Completing?	Forecast Date for Works Completion
1	Junction Upgrade Works to A308	<ul style="list-style-type: none">Construct upgrade works to junction.	No	Q2 2026

Wider Estate Remaining Works Plan



Dec 2025 – Updated Quarterly



Building Great Places

Development Update - Infrastructure, amenities and facilities at Windsor Gate

Managing Agents Contact Details

Windsor Gate (Windsor) Management Company Limited has appointed Specialist Property Asset Management Ltd to undertake the estate management for the development. Should you wish to discuss any estate management matters please contact the following:

Email: propertymanagement@specialistpm.com

Phone: 0121 725 3620

Dec 2025 – Updated Quarterly