



CREST
NICHOLSON

BRIGHTWELLS YARD

FARNHAM • SURREY

Perfectly situated to enjoy the beauty of surrounding scenery and the bustle of town, you will find Brightwells Yard is an ideal place to call home.

1, 2 & 3 BEDROOM APARTMENTS





WELCOME TO LIFE IN SURREY

A great choice of amenities, easy access to transport links, and being at the heart of an attractive market town. Your new home at Brightwells Yard really does offer everything you need.

On your doorstep

Shops, restaurants and leisure facilities form part of the development, but you don't have to travel far to find a range of additional options to enjoy and experience.

- 1 Shepherd and Flock
- 2 Borelli's Wine Bar & Grill
- 3 Farnham Park
- 4 Alice Holt Forest
- 5 David Lloyd Gym
- 6 Farnham Leisure Centre
- 7 Birdworld
- 8 Farnborough (15 minutes' drive)
- 9 Guildford (27 minutes' drive)

Education

There is an excellent choice of schools for all ages in the surrounding area, including a co-educational day and boarding school and an independent girls' school.

- 10 South Farnham School Infants
- 11 Folly Hill Infant School
- 12 William Cobbett Primary School
- 13 More House School
- 14 The Ridgeway Community School
- 15 Frensham Heights School
- 16 The Abbey School
- 17 Waverley Abbey School

Travel

With a train station just a short walk away, and easy access to the M3, M4, M25 and A3, as well as two major airports, you will find getting around is simple.

- Farnham Station – 9 minutes' walk
- Guildford – 27 minutes
- London Waterloo – 1 hour
- Heathrow Airport – 32 minutes' drive
- Gatwick Airport – 53 minutes' drive





BRIGHTWELLS YARD

East Street, Farnham,
Surrey, GU9 7UA

For all enquiries please call

01252 982426

brightwellsyard@crestnicholson.com

crestnicholson.com/brightwellsyard

A NEW DESTINATION IN THE HEART OF FARNHAM

Brightwells Yard is a contemporary collection of 1, 2 & 3 bedroom apartments in the centre of this attractive market town.

As well as our choice of beautiful apartments, you will find this transformed part of Farnham also includes a range of amenities. Here you will find shops, bars, restaurants and leisure facilities, including a small cinema, all set around a new square. For you, it means this exciting new development offers not just a home, but a whole new place to enjoy and experience.

Like each of our developments, much consideration has gone into what is close to home. If you want to step away from town for a while, there is a choice of green, open spaces, including Gostrey Meadow on the River Wey. Or, if history is a subject you enjoy, the 12th century Farnham Castle is just a short distance away.

With so much to discover, from the attractive Georgian architecture to the local scenery to everything that's on your doorstep, you can look forward to living life to the full in a brand new destination.





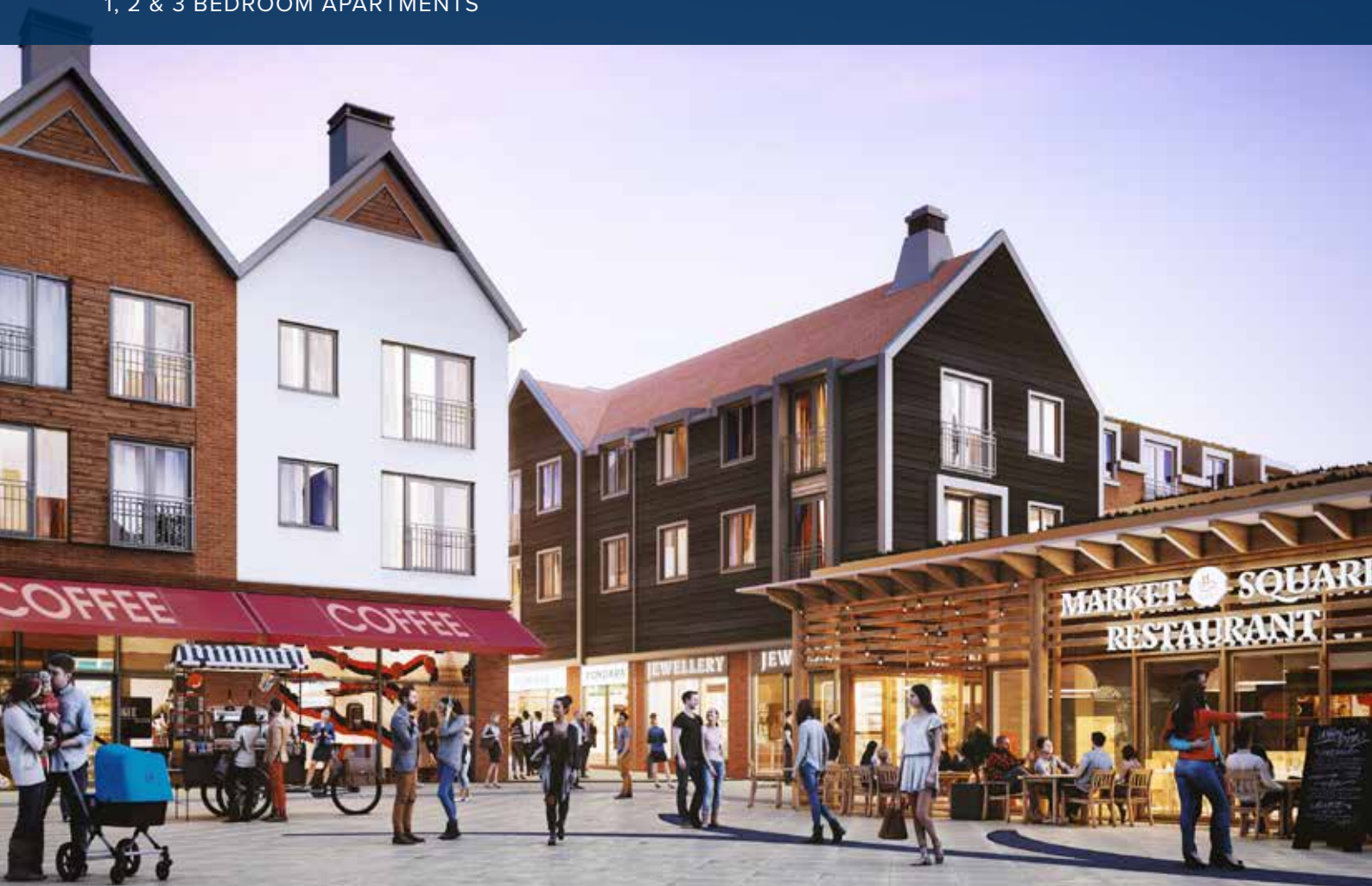
**CREST
NICHOLSON**

BRIGHTWELLS YARD

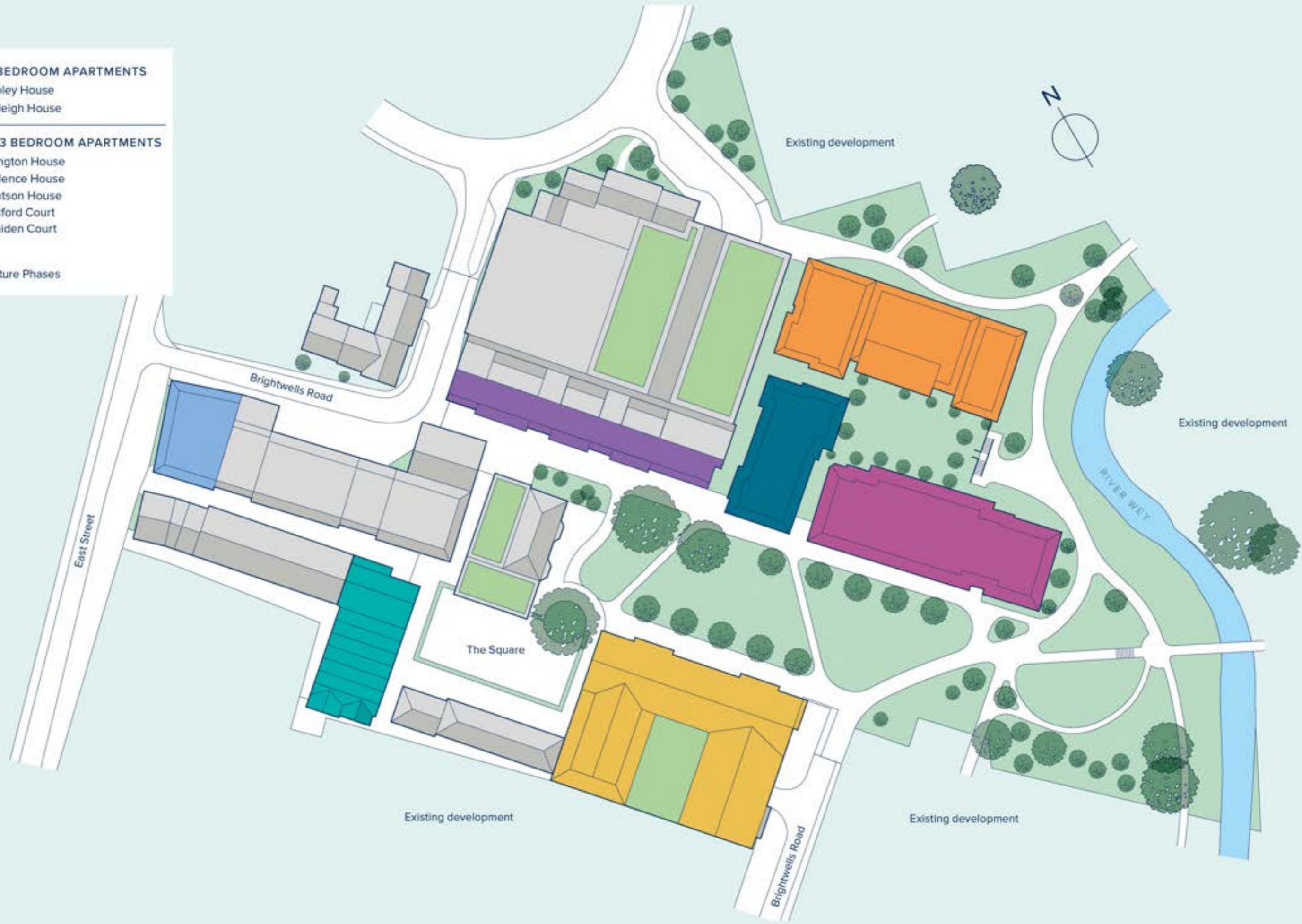
DEVELOPMENT PLAN

A stylish and thoughtfully designed collection of 1, 2 & 3 bedroom apartments

1, 2 & 3 BEDROOM APARTMENTS



- 1 & 2 BEDROOM APARTMENTS**
 - Ripley House
 - Raleigh House
- 1, 2 & 3 BEDROOM APARTMENTS**
 - Langton House
 - Valence House
 - Watson House
 - Mitford Court
 - Maiden Court
- Future Phases





**CREST
NICHOLSON**

BRIGHTWELLS YARD

MAIDEN COURT

GROUND FLOOR

This building is host to a collection of one, two and three double bedroom apartments which feature open plan living on a generous scale.

Balconies, terraces and bay windows are a feature of these properties, creating some beautifully bright and airy interiors. Some of the larger properties benefit from exquisite wrap-around terraces, providing a variety of elevated views.

En suite bathrooms are generously provided, as is built-in storage, creating extremely practical, as well as desirable, properties.

1, 2 & 3 BEDROOM APARTMENTS





TYPE 4 - PLOT 149

| | |
|-----------------------|---------------|
| KITCHEN / LIVING AREA | |
| 7.23m x 3.41m | 23'7" x 11'2" |
| BEDROOM 1 | 3.43m x 3.1m |
| | 11'3" x 10'2" |
| BEDROOM 2 | 3.93m x 2.75m |
| | 12'9" x 9'0" |

TYPE 1 - PLOT 150

| | |
|-----------------------|---------------|
| KITCHEN / LIVING AREA | |
| 7.52m x 3.54m | 24'7" x 11'6" |
| BEDROOM | 3.93m x 2.8m |
| | 12'9" x 9'2" |

TYPE 8 - PLOT 155

| | |
|-----------------------|---------------|
| KITCHEN / LIVING AREA | |
| 6.55m x 4.19m | 21'5" x 13'7" |
| BEDROOM 1 | 3.9m x 3.61m |
| | 12'8" x 11'8" |
| BEDROOM 2 | 3.66m x 3.12m |
| | 12'0" x 10'2" |

TYPE 2 - PLOT 151

| | |
|-----------------------|---------------|
| KITCHEN / LIVING AREA | |
| 6.15m x 3.39m | 20'2" x 11'1" |
| BEDROOM | 3.5m x 2.8m |
| | 11'5" x 9'2" |

TYPE 7 - PLOT 154

| | |
|-----------------------|---------------|
| KITCHEN / LIVING AREA | |
| 6.39m x 4.26m | 21'0" x 14'0" |
| BEDROOM 1 | 3.01m x 2.8m |
| | 9'9" x 9'2" |
| BEDROOM 2 | 3.36m x 2.9m |
| | 11'0" x 9'5" |

TYPE 3 - PLOT 152

| | |
|-----------------------|---------------|
| KITCHEN / LIVING AREA | |
| 6.61m x 3.42m | 21'7" x 11'2" |
| BEDROOM | 3.97m x 2.8m |
| | 13'0" x 9'2" |

TYPE 6 - PLOT 153

| | |
|-----------------------|---------------|
| KITCHEN / LIVING AREA | |
| 7.52m x 3.47m | 24'7" x 11'4" |
| BEDROOM 1 | 4.36m x 3.13m |
| | 14'3" x 10'3" |
| BEDROOM 2 | 3.97m x 2.75m |
| | 13'0" x 9'0" |

TYPE 3 - PLOT 170

| | |
|-----------------------|---------------|
| KITCHEN / LIVING AREA | |
| 6.61m x 3.42m | 21'7" x 11'2" |
| BEDROOM | 3.97m x 2.8m |
| | 13'0" x 9'2" |

TYPE 2 - PLOT 171

| | |
|-----------------------|---------------|
| KITCHEN / LIVING AREA | |
| 6.15m x 3.39m | 20'2" x 11'1" |
| BEDROOM | 3.5m x 2.8m |
| | 11'5" x 9'2" |

TYPE 1 - PLOT 172

| | |
|-----------------------|---------------|
| KITCHEN / LIVING AREA | |
| 7.52m x 3.54m | 24'7" x 11'6" |
| BEDROOM | 3.93m x 2.8m |
| | 12'9" x 9'2" |

TYPE 5 - PLOT 173

| | |
|-----------------------|---------------|
| KITCHEN / LIVING AREA | |
| 7.32m x 3.43m | 24'0" x 11'3" |
| BEDROOM 1 | 3.56m x 3.1m |
| | 11'7" x 10'2" |
| BEDROOM 2 | 4.02m x 2.75m |
| | 13'2" x 9'0" |

TYPE 9 - PLOT 174

| | |
|-----------------------|---------------|
| KITCHEN / LIVING AREA | |
| 8.31m x 3.95m | 27'3" x 13'0" |
| BEDROOM 1 | 6.24m x 2.9m |
| | 20'5" x 9'5" |
| BEDROOM 2 | 5.01m x 2.8m |
| | 16'4" x 9'2" |
| BEDROOM 3 | 4.1m x 2.75m |
| | 13'5" x 9'0" |

TYPE 6 - PLOT 175

| | |
|-----------------------|---------------|
| KITCHEN / LIVING AREA | |
| 7.52m x 3.47m | 24'7" x 11'4" |
| BEDROOM 1 | 4.36m x 3.13m |
| | 14'3" x 10'3" |
| BEDROOM 2 | 3.97m x 2.75m |
| | 13'0" x 9'0" |

B Bathroom
 ES En suite
 C Cupboard
 U Utility
 W Wardrobe



**CREST
NICHOLSON**

BRIGHTWELLS YARD

MAIDEN COURT

FIRST FLOOR

This building is host to a collection of one, two and three double bedroom apartments which feature open plan living on a generous scale.

Balconies, terraces and bay windows are a feature of these properties, creating some beautifully bright and airy interiors. Some of the larger properties benefit from exquisite wrap-around terraces, providing a variety of elevated views.

En suite bathrooms are generously provided, as is built-in storage, creating extremely practical, as well as desirable, properties.

1, 2 & 3 BEDROOM APARTMENTS





TYPE 4a - PLOT 156

| | |
|-----------------------|---------------|
| KITCHEN / LIVING AREA | |
| 7.23m x 3.41m | 23'7" x 11'2" |
| BEDROOM 1 | |
| 3.43m x 3.1m | 11'3" x 10'2" |
| BEDROOM 2 | |
| 3.93m x 2.75m | 12'9" x 9'0" |

TYPE 1a - PLOT 157

| | |
|-----------------------|---------------|
| KITCHEN / LIVING AREA | |
| 7.52m x 3.54m | 24'7" x 11'6" |
| BEDROOM | |
| 3.93m x 2.8m | 12'9" x 9'2" |

TYPE 8a - PLOT 162

| | |
|-----------------------|---------------|
| KITCHEN / LIVING AREA | |
| 6.55m x 4.19m | 21'5" x 13'7" |
| BEDROOM 1 | |
| 3.9m x 3.61m | 12'8" x 11'8" |
| BEDROOM 2 | |
| 3.66m x 3.12m | 12'0" x 10'2" |

TYPE 2a - PLOT 158

| | |
|-----------------------|---------------|
| KITCHEN / LIVING AREA | |
| 6.15m x 3.39m | 20'2" x 11'1" |
| BEDROOM | |
| 3.5m x 2.8m | 11'5" x 9'2" |

TYPE 7a - PLOT 161

| | |
|-----------------------|---------------|
| KITCHEN / LIVING AREA | |
| 6.39m x 4.26m | 21'0" x 14'0" |
| BEDROOM 1 | |
| 3.01m x 2.8m | 9'9" x 9'2" |
| BEDROOM 2 | |
| 3.41m x 2.9m | 11'0" x 9'5" |

TYPE 3a - PLOT 159

| | |
|-----------------------|---------------|
| KITCHEN / LIVING AREA | |
| 6.61m x 3.42m | 21'7" x 11'2" |
| BEDROOM | |
| 3.97m x 2.8m | 13'0" x 9'2" |

TYPE 6a - PLOT 160

| | |
|-----------------------|---------------|
| KITCHEN / LIVING AREA | |
| 7.52m x 3.47m | 24'7" x 11'4" |
| BEDROOM 1 | |
| 4.36m x 3.13m | 14'3" x 10'3" |
| BEDROOM 2 | |
| 3.97m x 2.75m | 13'0" x 9'0" |

TYPE 3a - PLOT 176

| | |
|-----------------------|---------------|
| KITCHEN / LIVING AREA | |
| 6.61m x 3.42m | 21'7" x 11'2" |
| BEDROOM | |
| 3.97m x 2.8m | 13'0" x 9'2" |

TYPE 2a - PLOT 177

| | |
|-----------------------|---------------|
| KITCHEN / LIVING AREA | |
| 6.15m x 3.39m | 20'2" x 11'1" |
| BEDROOM | |
| 3.5m x 2.8m | 11'5" x 9'2" |

TYPE 1a - PLOT 178

| | |
|-----------------------|---------------|
| KITCHEN / LIVING AREA | |
| 7.52m x 3.54m | 24'7" x 11'6" |
| BEDROOM | |
| 3.93m x 2.8m | 12'9" x 9'2" |

TYPE 5a - PLOT 179

| | |
|-----------------------|---------------|
| KITCHEN / LIVING AREA | |
| 7.32m x 3.43m | 24'0" x 11'3" |
| BEDROOM 1 | |
| 3.56m x 3.1m | 11'7" x 10'2" |
| BEDROOM 2 | |
| 4m x 2.75m | 13'2" x 9'0" |

TYPE 9a - PLOT 180

| | |
|-----------------------|---------------|
| KITCHEN / LIVING AREA | |
| 8.31m x 3.95m | 27'3" x 13'0" |
| BEDROOM 1 | |
| 6.24m x 2.9m | 20'5" x 9'5" |
| BEDROOM 2 | |
| 5.01m x 2.8m | 16'4" x 9'2" |
| BEDROOM 3 | |
| 4.1m x 2.75m | 13'5" x 9'0" |

TYPE 6a - PLOT 181

| | |
|-----------------------|---------------|
| KITCHEN / LIVING AREA | |
| 7.52m x 3.47m | 24'7" x 11'4" |
| BEDROOM 1 | |
| 4.36m x 3.13m | 14'3" x 10'3" |
| BEDROOM 2 | |
| 3.97m x 2.75m | 13'0" x 9'0" |

B Bathroom
 ES En suite
 C Cupboard
 U Utility
 W Wardrobe



**CREST
NICHOLSON**

BRIGHTWELLS YARD

MAIDEN COURT

SECOND FLOOR

This building is host to a collection of one, two and three double bedroom apartments which feature open plan living on a generous scale.

Balconies, terraces and bay windows are a feature of these properties, creating some beautifully bright and airy interiors. Some of the larger properties benefit from exquisite wrap-around terraces, providing a variety of elevated views.

En suite bathrooms are generously provided, as is built-in storage, creating extremely practical, as well as desirable, properties.

1, 2 & 3 BEDROOM APARTMENTS





TYPE 4a - PLOT 163

| | |
|-----------------------|---------------|
| KITCHEN / LIVING AREA | |
| 7.23m x 3.41m | 23'7" x 11'2" |
| BEDROOM 1 | |
| 3.43m x 3.1m | 11'3" x 10'2" |
| BEDROOM 2 | |
| 3.93m x 2.75m | 12'9" x 9'0" |

TYPE 2a - PLOT 165

| | |
|-----------------------|---------------|
| KITCHEN / LIVING AREA | |
| 6.15m x 3.39m | 20'2" x 11'1" |
| BEDROOM | |
| 3.5m x 2.8m | 11'5" x 9'2" |

TYPE 8a - PLOT 169

| | |
|-----------------------|---------------|
| KITCHEN / LIVING AREA | |
| 6.55m x 4.19m | 21'5" x 13'7" |
| BEDROOM 1 | |
| 3.9m x 3.61m | 12'8" x 11'8" |
| BEDROOM 2 | |
| 3.66m x 3.12m | 12'0" x 10'2" |

TYPE 7a - PLOT 168

| | |
|-----------------------|---------------|
| KITCHEN / LIVING AREA | |
| 6.39m x 4.26m | 21'0" x 14'0" |
| BEDROOM 1 | |
| 3.01m x 2.8m | 9'9" x 9'2" |
| BEDROOM 2 | |
| 3.41m x 2.9m | 11'2" x 9'5" |

TYPE 6a - PLOT 167

| | |
|-----------------------|---------------|
| KITCHEN / LIVING AREA | |
| 7.52m x 3.47m | 24'7" x 11'4" |
| BEDROOM 1 | |
| 4.36m x 3.13m | 14'3" x 10'3" |
| BEDROOM 2 | |
| 3.97m x 2.75m | 13'0" x 9'0" |

TYPE 2a - PLOT 183

| | |
|-----------------------|---------------|
| KITCHEN / LIVING AREA | |
| 6.15m x 3.39m | 20'2" x 11'1" |
| BEDROOM | |
| 3.5m x 2.8m | 11'5" x 9'2" |

TYPE 5a - PLOT 185

| | |
|-----------------------|---------------|
| KITCHEN / LIVING AREA | |
| 7.32m x 3.43m | 24'0" x 11'3" |
| BEDROOM 1 | |
| 3.56m x 3.1m | 11'7" x 10'2" |
| BEDROOM 2 | |
| 4m x 2.75m | 13'2" x 9'0" |

TYPE 9a - PLOT 186

| | |
|-----------------------|---------------|
| KITCHEN / LIVING AREA | |
| 8.31m x 3.95m | 27'3" x 13'0" |
| BEDROOM 1 | |
| 6.24m x 2.9m | 20'5" x 9'5" |
| BEDROOM 2 | |
| 5.01m x 2.8m | 16'4" x 9'2" |
| BEDROOM 3 | |
| 4.1m x 2.75m | 13'5" x 9'0" |

TYPE 6a - PLOT 187

| | |
|-----------------------|---------------|
| KITCHEN / LIVING AREA | |
| 7.52m x 3.47m | 24'7" x 11'4" |
| BEDROOM 1 | |
| 4.36m x 3.13m | 14'3" x 10'3" |
| BEDROOM 2 | |
| 3.97m x 2.75m | 13'0" x 9'0" |

B Bathroom
 ES En suite
 C Cupboard
 U Utility
 W Wardrobe



**CREST
NICHOLSON**

BRIGHTWELLS YARD

MAIDEN COURT

SECOND & THIRD FLOOR

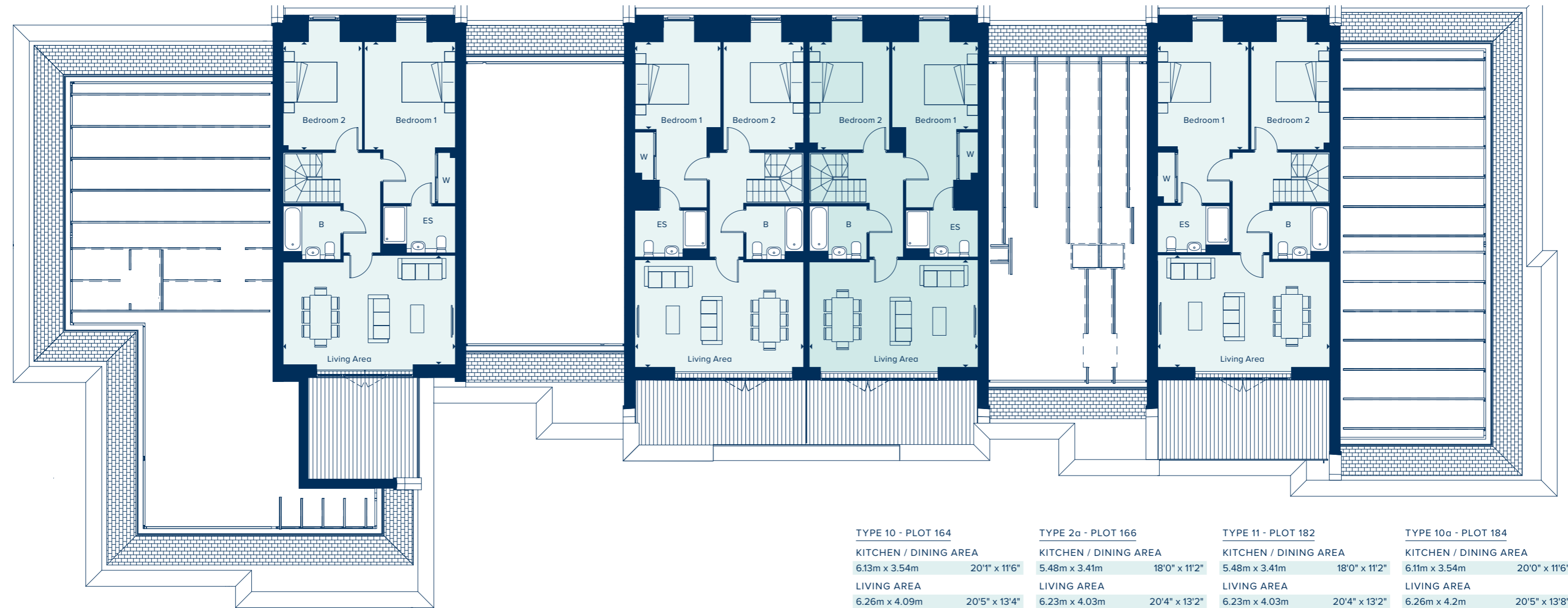
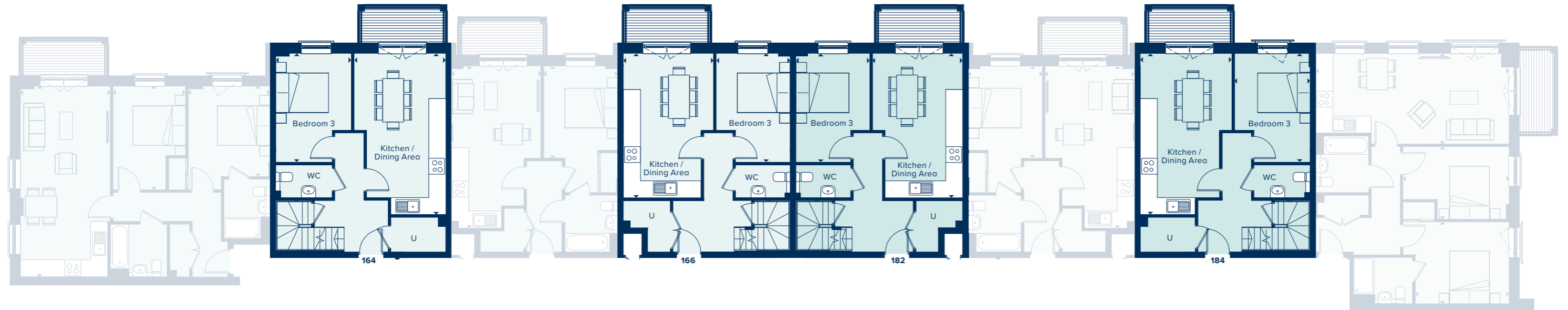
These duplex apartments are situated on the second and third floors: an elevated position which is well served by the exceptional provision of balconies and terraces.

With outside space facing both east and west, you'll have the perfect opportunity to enjoy the sun both with breakfast and with an evening drink. The west-facing terrace which leads from the living room would provide the ideal situation for an al fresco evening meal, just as the east-facing balcony leading from the kitchen is the perfect spot for morning coffee.

These apartments are generously sized throughout, with three double bedrooms, an en suite bathroom and downstairs wc in addition to a main bathroom, and ample storage space.

3 BEDROOM DUPLEX APARTMENTS





B Bathroom
 ES En suite
 U Utility
 W Wardrobe

| TYPE 10 - PLOT 164 | | TYPE 2a - PLOT 166 | | TYPE 11 - PLOT 182 | | TYPE 10a - PLOT 184 | |
|-----------------------|---------------|-----------------------|---------------|-----------------------|---------------|-----------------------|---------------|
| KITCHEN / DINING AREA | | KITCHEN / DINING AREA | | KITCHEN / DINING AREA | | KITCHEN / DINING AREA | |
| 6.13m x 3.54m | 20'1" x 11'6" | 5.48m x 3.41m | 18'0" x 11'2" | 5.48m x 3.41m | 18'0" x 11'2" | 6.11m x 3.54m | 20'0" x 11'6" |
| LIVING AREA | | LIVING AREA | | LIVING AREA | | LIVING AREA | |
| 6.26m x 4.09m | 20'5" x 13'4" | 6.23m x 4.03m | 20'4" x 13'2" | 6.23m x 4.03m | 20'4" x 13'2" | 6.26m x 4.2m | 20'5" x 13'8" |
| BEDROOM 1 | | BEDROOM 1 | | BEDROOM 1 | | BEDROOM 1 | |
| 4.04m x 3.4m | 13'3" x 11'2" | 3.28m x 3.27m | 10'8" x 10'7" | 3.28m x 3.27m | 10'8" x 10'7" | 4.04m x 3.4m | 13'3" x 11'2" |
| BEDROOM 2 | | BEDROOM 2 | | BEDROOM 2 | | BEDROOM 2 | |
| 4.04m x 2.94m | 13'3" x 9'6" | 4.05m x 3m | 13'3" x 9'8" | 4.05m x 3m | 13'3" x 9'8" | 4.04m x 2.94m | 13'3" x 9'6" |
| BEDROOM 3 | | BEDROOM 3 | | BEDROOM 3 | | BEDROOM 3 | |
| 4.13m x 2.8m | 13'5" x 9'2" | 4.13m x 2.8m | 13'5" x 9'2" | 4.13m x 2.8m | 13'5" x 9'2" | 4.11m x 2.8m | 13'5" x 9'2" |



**CREST
NICHOLSON**

BRIGHTWELLS YARD

MITFORD COURT

GROUND FLOOR

This block hosts a selection of one, two and three double bedroom apartments.

On the ground floor, each property benefits from a private terrace, while the upper storeys offer a selection of balconies, Juliet balconies and bay windows, resulting in a collection of varied, but consistently bright and airy properties.

Open plan living is a feature of these apartments and provides living spaces which are generously sized, flexible and offer great opportunities for socialising.

Many of the larger apartments benefit from en suite shower rooms in addition to a main bathroom, and ample storage spaces are provided, many properties featuring built-in wardrobes.

1, 2 & 3 BEDROOM APARTMENTS





TYPE 4 - PLOT 206

| | |
|-----------------------|---------------|
| KITCHEN / LIVING AREA | |
| 8.27m x 3.34m | 27'1" x 11'0" |
| BEDROOM 1 | |
| 3.05m x 2.85m | 10'0" x 9'4" |
| BEDROOM 2 | |
| 4.41m x 2.99m | 14'5" x 9'8" |

TYPE 1 - PLOT 207

| | |
|-----------------------|---------------|
| KITCHEN / LIVING AREA | |
| 7.09m x 3.4m | 23'3" x 11'2" |
| BEDROOM | |
| 4.48m x 2.8m | 14'7" x 9'2" |

TYPE 2 - PLOT 208

| | |
|-----------------------|---------------|
| KITCHEN / LIVING AREA | |
| 6.11m x 3.5m | 20'0" x 11'5" |
| BEDROOM | |
| 3.59m x 2.8m | 11'8" x 9'2" |

TYPE 10 - PLOT 209

| | |
|-----------------------|---------------|
| KITCHEN / LIVING AREA | |
| 8.19m x 3.62m | 26'9" x 11'9" |
| BEDROOM 1 | |
| 3.18m x 2.99m | 10'4" x 9'8" |
| BEDROOM 2 | |
| 3.42m x 2.8m | 11'2" x 9'2" |

TYPE 3 - PLOT 210

| | |
|-----------------------|---------------|
| KITCHEN / LIVING AREA | |
| 6.68m x 3.37m | 21'9" x 11'1" |
| BEDROOM | |
| 3.98m x 2.8m | 13'1" x 9'2" |

TYPE 5 - PLOT 220

| | |
|-----------------------|---------------|
| KITCHEN / LIVING AREA | |
| 8.03m x 3.57m | 26'3" x 11'7" |
| BEDROOM 1 | |
| 3.43m x 2.9m | 11'3" x 9'5" |
| BEDROOM 2 | |
| 4.58m x 2.85m | 15'0" x 9'4" |

TYPE 6 - PLOT 221

| | |
|-----------------------|---------------|
| KITCHEN / LIVING AREA | |
| 8.03m x 3.61m | 26'3" x 11'8" |
| BEDROOM 1 | |
| 4.64m x 2.9m | 15'2" x 9'5" |
| BEDROOM 2 | |
| 3.44m x 2.8m | 11'3" x 9'2" |

TYPE 7 - PLOT 222

| | |
|-----------------------|---------------|
| KITCHEN / LIVING AREA | |
| 8.21m x 3.51m | 26'9" x 11'5" |
| BEDROOM 1 | |
| 4.44m x 3.1m | 14'6" x 10'2" |
| BEDROOM 2 | |
| 4.91m x 2.8m | 16'1" x 9'2" |

TYPE 13 - PLOT 223

| | |
|-----------------------|---------------|
| KITCHEN / LIVING AREA | |
| 6.73m x 5.71m | 22'1" x 18'7" |
| BEDROOM 1 | |
| 5.76m x 4.5m | 18'9" x 14'8" |
| BEDROOM 2 | |
| 4.28m x 3.37m | 14'0" x 11'1" |
| BEDROOM 3 | |
| 4.28m x 2.9m | 14'0" x 9'5" |

TYPE 8 - PLOT 224

| | |
|-----------------------|---------------|
| KITCHEN / LIVING AREA | |
| 6.7m x 3.44m | 22'0" x 11'3" |
| BEDROOM 1 | |
| 3.63m x 3m | 11'9" x 9'8" |
| BEDROOM 2 | |
| 3.15m x 3.15m | 10'3" x 10'3" |

TYPE 9 - PLOT 225

| | |
|-----------------------|---------------|
| KITCHEN / LIVING AREA | |
| 7.58m x 3.62m | 24'9" x 11'9" |
| BEDROOM 1 | |
| 3.63m x 2.9m | 11'9" x 9'5" |
| BEDROOM 2 | |
| 4.03m x 2.8m | 13'2" x 9'2" |

B Bathroom
 ES En suite
 C Cupboard
 U Utility
 W Wardrobe



**CREST
NICHOLSON**

BRIGHTWELLS YARD

MITFORD COURT

FIRST FLOOR

This block hosts a selection of one, two and three double bedroom apartments.

On the ground floor, each property benefits from a private terrace, while the upper storeys offer a selection of balconies, Juliet balconies and bay windows, resulting in a collection of varied, but consistently bright and airy properties.

Open plan living is a features of these apartments and provides living spaces which are generously sized, flexible and offer great opportunities for socialising.

Many of the larger apartments benefit from en suite shower rooms in addition to a main bathroom, and ample storage spaces are provided, many properties featuring built-in wardrobes.

1, 2 & 3 BEDROOM APARTMENTS





TYPE 4a - PLOT 211

| | |
|-----------------------|---------------|
| KITCHEN / LIVING AREA | |
| 8.27m x 3.34m | 27'1" x 11'0" |
| BEDROOM 1 | |
| 3.05m x 2.85m | 10'0" x 9'4" |
| BEDROOM 2 | |
| 4.41m x 2.98m | 14'5" x 9'8" |

TYPE 1a - PLOT 212

| | |
|-----------------------|---------------|
| KITCHEN / LIVING AREA | |
| 7.09m x 3.4m | 23'3" x 11'2" |
| BEDROOM | |
| 4.48m x 2.8m | 14'7" x 9'2" |

TYPE 16 - PLOT 213

| | |
|-----------------------|---------------|
| KITCHEN / LIVING AREA | |
| 9.15m x 3.55m | 30'0" x 11'6" |
| BEDROOM 1 | |
| 3.1m x 3.1m | 10'2" x 10'2" |
| BEDROOM 2 | |
| 3.81m x 3.2m | 12'5" x 10'5" |
| BEDROOM 3 | |
| 4.54m x 2.75m | 14'9" x 9'0" |

TYPE 12 - PLOT 214

| | |
|-----------------------|---------------|
| KITCHEN / LIVING AREA | |
| 7.53m x 3.58m | 24'7" x 11'7" |
| BEDROOM 1 | |
| 3.53m x 2.9m | 11'6" x 9'5" |
| BEDROOM 2 | |
| 4.26m x 2.8m | 14'0" x 9'2" |

TYPE 5a - PLOT 226

| | |
|-----------------------|---------------|
| KITCHEN / LIVING AREA | |
| 8.03m x 3.57m | 26'3" x 11'7" |
| BEDROOM 1 | |
| 3.43m x 2.9m | 11'3" x 9'5" |
| BEDROOM 2 | |
| 4.58m x 2.85m | 15'0" x 9'4" |

TYPE 6a - PLOT 227

| | |
|-----------------------|---------------|
| KITCHEN / LIVING AREA | |
| 8.03m x 3.61m | 26'3" x 11'8" |
| BEDROOM 1 | |
| 4.64m x 2.9m | 15'2" x 9'5" |
| BEDROOM 2 | |
| 3.44m x 2.8m | 11'3" x 9'2" |

TYPE 7a - PLOT 228

| | |
|-----------------------|---------------|
| KITCHEN / LIVING AREA | |
| 8.21m x 3.51m | 26'9" x 11'5" |
| BEDROOM 1 | |
| 4.44m x 3.1m | 14'6" x 10'2" |
| BEDROOM 2 | |
| 4.91m x 2.8m | 16'1" x 9'2" |

TYPE 14 - PLOT 229

| | |
|-----------------------|---------------|
| KITCHEN / LIVING AREA | |
| 6.77m x 5.71m | 22'2" x 18'7" |
| BEDROOM 1 | |
| 4.28m x 3.25m | 14'0" x 10'7" |
| BEDROOM 2 | |
| 4.28m x 3.02m | 14'0" x 9'9" |
| BEDROOM 3 | |
| 4.28m x 2.9m | 14'0" x 9'5" |

TYPE 11 - PLOT 230

| | |
|-----------------------|---------------|
| KITCHEN / LIVING AREA | |
| 6.7m x 3.68m | 22'0" x 12'1" |
| BEDROOM 1 | |
| 4.45m x 3.1m | 14'6" x 10'2" |
| BEDROOM 2 | |
| 3.15m x 2.9m | 10'3" x 9'5" |

TYPE 15 - PLOT 231

| | |
|-----------------------|---------------|
| KITCHEN / LIVING AREA | |
| 7.58m x 3.88m | 24'9" x 12'7" |
| BEDROOM 1 | |
| 5.73m x 2.9m | 18'8" x 9'5" |
| BEDROOM 2 | |
| 4.28m x 2.85m | 14'0" x 9'4" |
| BEDROOM 3 | |
| 4.28m x 2.8m | 14'0" x 9'2" |

B Bathroom
 ES En suite
 C Cupboard
 U Utility
 W Wardrobe



**CREST
NICHOLSON**

BRIGHTWELLS YARD

MITFORD COURT

SECOND FLOOR

This block hosts a selection of one, two and three double bedroom apartments.

On the ground floor, each property benefits from a private terrace, while the upper storeys offer a selection of balconies, Juliet balconies and bay windows, resulting in a collection of varied, but consistently bright and airy properties.

Open plan living is a features of these apartments and provides living spaces which are generously sized, flexible and offer great opportunities for socialising.

Many of the larger apartments benefit from en suite shower rooms in addition to a main bathroom, and ample storage spaces are provided, many properties featuring built-in wardrobes.

1, 2 & 3 BEDROOM APARTMENTS





TYPE 4 - PLOT 215

| | |
|-----------------------|---------------|
| KITCHEN / LIVING AREA | |
| 8.27m x 3.34m | 27'1" x 11'0" |
| BEDROOM 1 | |
| 3.05m x 2.85m | 10'0" x 9'4" |
| BEDROOM 2 | |
| 4.41m x 2.98m | 14'5" x 9'8" |

TYPE 1a - PLOT 216

| | |
|-----------------------|---------------|
| KITCHEN / LIVING AREA | |
| 7.09m x 3.4m | 23'3" x 11'2" |
| BEDROOM | |
| 4.48m x 2.8m | 14'7" x 9'2" |

TYPE 16 - PLOT 217

| | |
|-----------------------|---------------|
| KITCHEN / LIVING AREA | |
| 9.15m x 3.55m | 30'0" x 11'6" |
| BEDROOM 1 | |
| 3.1m x 3.1m | 10'2" x 10'2" |
| BEDROOM 2 | |
| 3.81m x 3.2m | 12'5" x 10'5" |
| BEDROOM 3 | |
| 4.54m x 2.75m | 14'9" x 9'0" |

TYPE 12 - PLOT 218

| | |
|-----------------------|---------------|
| KITCHEN / LIVING AREA | |
| 7.53m x 3.58m | 24'7" x 11'7" |
| BEDROOM 1 | |
| 3.53m x 2.9m | 11'6" x 9'5" |
| BEDROOM 2 | |
| 4.26m x 2.8m | 14'0" x 9'2" |

TYPE 5a - PLOT 232

| | |
|-----------------------|---------------|
| KITCHEN / LIVING AREA | |
| 8.03m x 3.57m | 26'3" x 11'7" |
| BEDROOM 1 | |
| 3.43m x 2.9m | 11'3" x 9'5" |
| BEDROOM 2 | |
| 4.58m x 2.85m | 15'0" x 9'4" |

TYPE 6a - PLOT 233

| | |
|-----------------------|---------------|
| KITCHEN / LIVING AREA | |
| 8.03m x 3.61m | 26'3" x 11'8" |
| BEDROOM 1 | |
| 4.64m x 2.9m | 15'2" x 9'5" |
| BEDROOM 2 | |
| 3.44m x 2.8m | 11'3" x 9'2" |

TYPE 7a - PLOT 234

| | |
|-----------------------|---------------|
| KITCHEN / LIVING AREA | |
| 8.21m x 3.51m | 26'9" x 11'5" |
| BEDROOM 1 | |
| 4.44m x 3.1m | 14'6" x 10'2" |
| BEDROOM 2 | |
| 4.91m x 2.8m | 16'1" x 9'2" |

TYPE 14 - PLOT 235

| | |
|-----------------------|---------------|
| KITCHEN / LIVING AREA | |
| 6.77m x 5.71m | 22'2" x 18'7" |
| BEDROOM 1 | |
| 4.28m x 3.25m | 14'0" x 10'7" |
| BEDROOM 2 | |
| 4.28m x 3.02m | 14'0" x 9'9" |
| BEDROOM 3 | |
| 4.28m x 2.9m | 14'0" x 9'5" |

TYPE 11 - PLOT 236

| | |
|-----------------------|---------------|
| KITCHEN / LIVING AREA | |
| 6.7m x 3.68m | 22'0" x 12'1" |
| BEDROOM 1 | |
| 4.45m x 3.11m | 14'6" x 10'2" |
| BEDROOM 2 | |
| 3.15m x 2.9m | 10'3" x 9'5" |

B Bathroom
 ES En suite
 C Cupboard
 U Utility
 W Wardrobe



**CREST
NICHOLSON**

BRIGHTWELLS YARD

MITFORD COURT

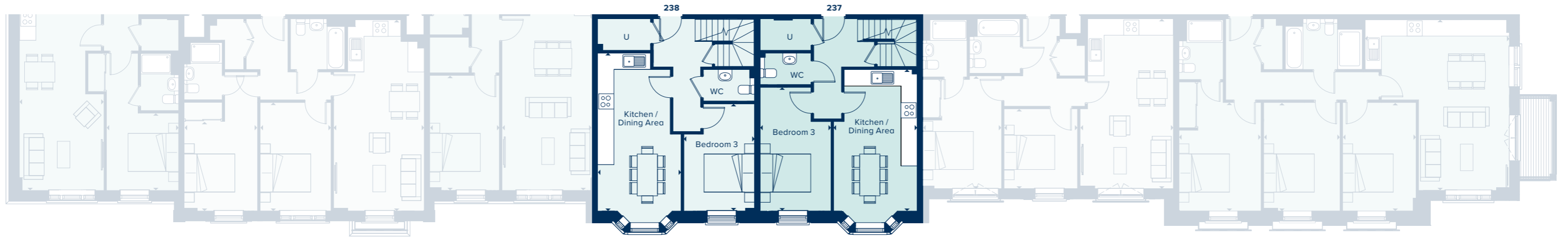
SECOND & THIRD FLOOR

Spread across the second and third floors, these properties offer three double bedrooms and generous living spaces.

The lower floor provides a large kitchen diner, with a south west facing bay window providing ample natural light. A bedroom, wc and two large cupboards are also provided. On the upper floor, a large living room features two sets of double glass doors which lead onto a roof terrace. Two further bedrooms (one en suite) are also accommodated on this floor, along with and a bathroom and further storage space.

1, 2 & 3 BEDROOM DUPLEX APARTMENTS





TYPE 19 - PLOT 219

| | | |
|-----------------------|---------------|---------------|
| KITCHEN / LIVING AREA | 6.63m x 6.3m | 21'8" x 20'7" |
| BEDROOM 1 | 4.38m x 2.98m | 14'4" x 9'8" |
| BEDROOM 2 | 3.5m x 3.38m | 11'5" x 11'1" |
| BEDROOM 3 | 3.68m x 2.8m | 12'1" x 9'2" |

TYPE 18 - PLOT 238

| | | |
|-----------------------|---------------|---------------|
| KITCHEN / DINING AREA | 6.23m x 3.31m | 20'4" x 10'9" |
| LIVING AREA | 6.21m x 3.54m | 20'4" x 11'6" |
| BEDROOM 1 | 5.46m x 3.16m | 17'9" x 10'4" |
| BEDROOM 2 | 4.16m x 2.95m | 13'6" x 9'7" |
| BEDROOM 3 | 4.23m x 2.8m | 13'9" x 9'2" |

TYPE 17 - PLOT 237

| | | |
|-----------------------|---------------|---------------|
| KITCHEN / DINING AREA | 5.58m x 3.31m | 18'3" x 10'9" |
| LIVING AREA | 6.21m x 3.84m | 20'4" x 12'6" |
| BEDROOM 1 | 4.16m x 2.95m | 13'6" x 9'7" |
| BEDROOM 2 | 4.16m x 3.06m | 13'6" x 10'0" |
| BEDROOM 3 | 4.88m x 2.8m | 16'0" x 9'2" |

TYPE 20 - PLOT 239

| | | |
|-----------------------|---------------|---------------|
| KITCHEN / LIVING AREA | 7.81m x 7.01m | 25'6" x 23'0" |
| BEDROOM 1 | 4.18m x 3.1m | 13'7" x 10'2" |
| BEDROOM 2 | 3.98m x 3.27m | 13'1" x 10'7" |
| BEDROOM 3 | 3.98m x 2.8m | 13'1" x 9'2" |

B Bathroom
 ES En suite
 C Cupboard
 U Utility
 W Wardrobe



BRIGHTWELLS YARD WATSON HOUSE

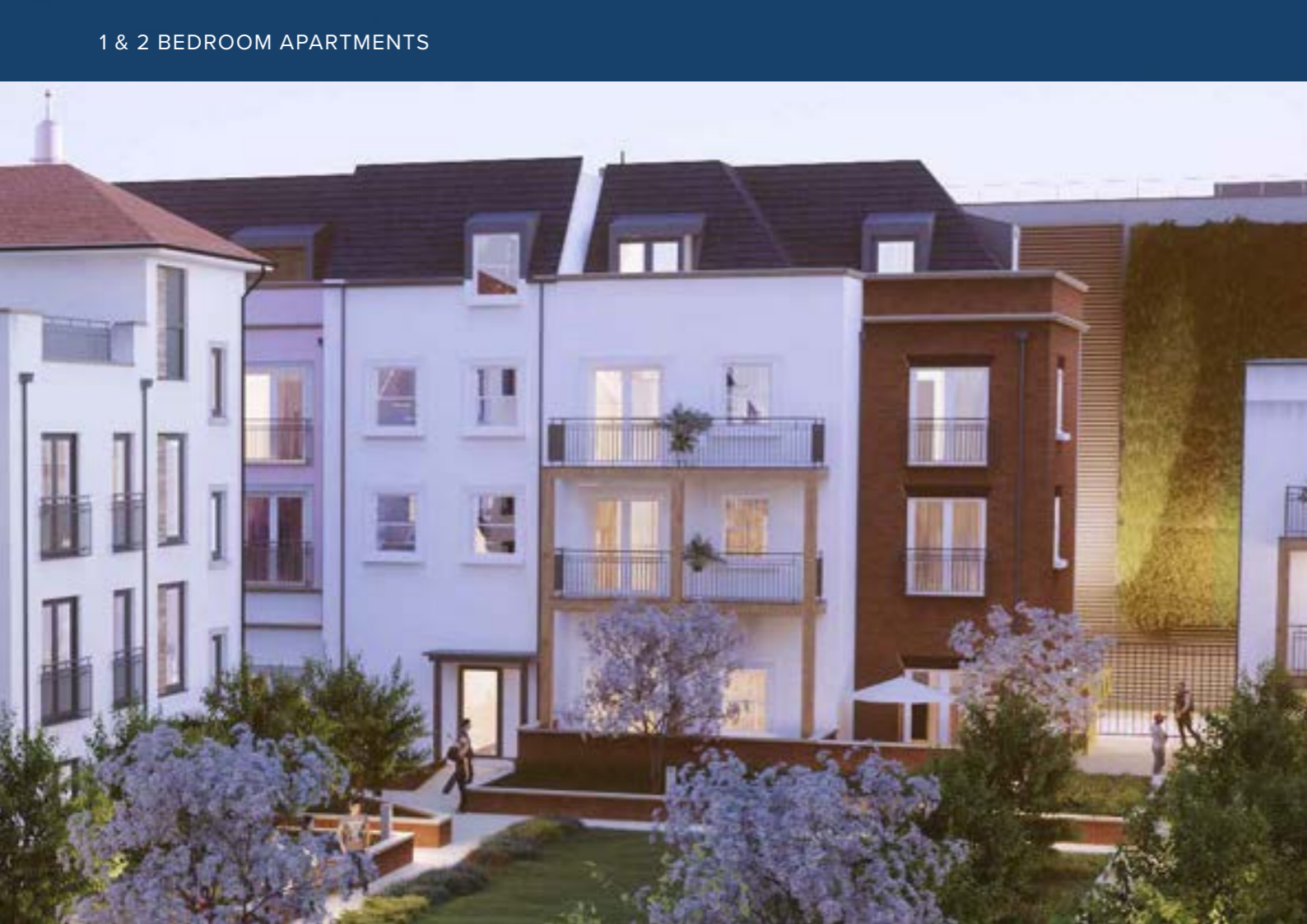
GROUND FLOOR

This building is host to a collection of one, two and three double bedroom apartments which feature open plan living on a generous scale.

Balconies, terraces and bay windows are a feature of these properties, creating some beautifully bright and airy interiors. Some of the larger properties benefit from exquisite wrap-around terraces, providing a variety of elevated views.

En suite bathrooms are generously provided, as is built-in storage, creating extremely practical, as well as desirable, properties.

1 & 2 BEDROOM APARTMENTS



GROUND FLOOR

TYPE 4 - PLOT 188

KITCHEN / LIVING AREA

6.51m x 4.04m 21'4" x 13'3"

BEDROOM 1

3.93m x 3.93m 12'9" x 12'9"

BEDROOM 2

3.30m x 3.11m 10'8" x 10'2"

TYPE 1 - PLOT 189

KITCHEN / LIVING AREA

6.69m x 3.42m 21'9" x 11'2"

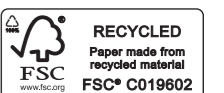
BEDROOM

4.09m x 2.8m 13'4" x 9'2"



B Bathroom
ES En suite
U Utility
W Wardrobe

Please note, the digital illustrations are for illustration purposes only and any may not accurately depict elevation materials, gradients, landscaping or street furniture and may be subject to change. Whilst every effort has been made to ensure that the measurements and dimensions referred to in this brochure are an accurate reflection of the dimensions and measurements of the plots when built, the dimensions may vary from the measurements shown in the brochure save that any such variation shall be no greater than +/- 50mm of the measurements referred to in the brochure. You are strongly advised, therefore, not to order any carpets, appliances or any other goods which depend on precise dimensions before carrying out an actual measurement within your reserved plot. Whilst every reasonable effort has been made to ensure that the information contained in this brochure is correct, it is designed specifically as a guide only and does not constitute or form any part of a contract of sale transfer or lease unless any point that you specifically want to rely on is confirmed in writing by Crest Nicholson and is referred to in the contract. Please ask a sales executive for further details. Crest Nicholson is a registered developer with the New Homes Quality Code. Please speak to a sales executive if you need further help with any marketing material including provision in another format. STU9064/January 2023.





**CREST
NICHOLSON**

BRIGHTWELLS YARD

WATSON HOUSE

FIRST FLOOR

This building is host to a collection of one, two and three double bedroom apartments which feature open plan living on a generous scale.

Balconies, terraces and bay windows are a feature of these properties, creating some beautifully bright and airy interiors. Some of the larger properties benefit from exquisite wrap-around terraces, providing a variety of elevated views.

En suite bathrooms are generously provided, as is built-in storage, creating extremely practical, as well as desirable, properties.

1 & 2 BEDROOM APARTMENTS





TYPE 4a - PLOT 190

| | |
|-----------------------|---------------|
| KITCHEN / LIVING AREA | |
| 6.51m x 4.04m | 21'4" x 13'3" |
| BEDROOM 1 | |
| 3.93m x 3.93m | 12'9" x 12'9" |
| BEDROOM 2 | |
| 3.39m x 3.11m | 11'1" x 10'2" |

TYPE 1a - PLOT 191

| | |
|-----------------------|---------------|
| KITCHEN / LIVING AREA | |
| 6.69m x 3.42m | 21'9" x 11'2" |
| BEDROOM | |
| 4.09m x 2.8m | 13'4" x 9'2" |

TYPE 2 - PLOT 192

| | |
|-----------------------|---------------|
| KITCHEN / LIVING AREA | |
| 5.74m x 3.4m | 18'8" x 11'2" |
| BEDROOM | |
| 3.14m x 2.8m | 10'3" x 9'2" |

TYPE 5 - PLOT 193

| | |
|-----------------------|---------------|
| KITCHEN / LIVING AREA | |
| 6.67m x 3.44m | 21'9" x 11'3" |
| BEDROOM 1 | |
| 3.44m x 2.8m | 11'3" x 9'2" |
| BEDROOM 2 | |
| 3.22m x 3.2m | 10'6" x 10'5" |

TYPE 6 - PLOT 194

| | |
|-----------------------|---------------|
| KITCHEN / LIVING AREA | |
| 7.45m x 3.49m | 24'4" x 11'5" |
| BEDROOM 1 | |
| 3m x 2.9m | 9'8" x 9'5" |
| BEDROOM 2 | |
| 4.16m x 2.8m | 13'6" x 9'2" |

TYPE 3 - PLOT 195

| | |
|-----------------------|---------------|
| KITCHEN / LIVING AREA | |
| 5.86m x 3.4m | 19'2" x 11'2" |
| BEDROOM | |
| 3.19m x 2.8m | 10'5" x 9'2" |

TYPE 7 - PLOT 196

| | |
|-----------------------|---------------|
| KITCHEN / LIVING AREA | |
| 6.74m x 3.58m | 22'1" x 11'7" |
| BEDROOM 1 | |
| 3.19m x 2.9m | 10'5" x 9'5" |
| BEDROOM 2 | |
| 3.19m x 2.9m | 10'5" x 9'5" |

B Bathroom
 ES En suite
 U Utility
 W Wardrobe



**CREST
NICHOLSON**

BRIGHTWELLS YARD

WATSON HOUSE

SECOND FLOOR

This building is host to a collection of one, two and three double bedroom apartments which feature open plan living on a generous scale.

Balconies, terraces and bay windows are a feature of these properties, creating some beautifully bright and airy interiors. Some of the larger properties benefit from exquisite wrap-around terraces, providing a variety of elevated views.

En suite bathrooms are generously provided, as is built-in storage, creating extremely practical, as well as desirable, properties.

1 & 2 BEDROOM APARTMENTS





TYPE 4a - PLOT 197

| | |
|-----------------------|---------------|
| KITCHEN / LIVING AREA | |
| 6.51m x 4.04m | 21'4" x 13'3" |
| BEDROOM 1 | |
| 3.93m x 3.93m | 12'9" x 12'9" |
| BEDROOM 2 | |
| 3.39m x 3.11m | 11'1" x 10'2" |

TYPE 1a - PLOT 198

| | |
|-----------------------|---------------|
| KITCHEN / LIVING AREA | |
| 6.69m x 3.42m | 21'9" x 11'2" |
| BEDROOM | |
| 4.09m x 2.8m | 13'4" x 9'2" |

TYPE 2 - PLOT 199

| | |
|-----------------------|---------------|
| KITCHEN / LIVING AREA | |
| 5.74m x 3.4m | 18'8" x 11'2" |
| BEDROOM | |
| 3.14m x 2.8m | 10'3" x 9'2" |

TYPE 5 - PLOT 200

| | |
|-----------------------|---------------|
| KITCHEN / LIVING AREA | |
| 6.67m x 3.44m | 21'9" x 11'3" |
| BEDROOM 1 | |
| 3.44m x 2.8m | 11'3" x 9'2" |
| BEDROOM 2 | |
| 3.22m x 3.2m | 10'6" x 10'5" |

TYPE 6 - PLOT 201

| | |
|-----------------------|---------------|
| KITCHEN / LIVING AREA | |
| 7.45m x 3.49m | 24'4" x 11'5" |
| BEDROOM 1 | |
| 3m x 2.9m | 9'8" x 9'5" |
| BEDROOM 2 | |
| 4.16m x 2.8m | 13'6" x 9'2" |

TYPE 3 - PLOT 202

| | |
|-----------------------|---------------|
| KITCHEN / LIVING AREA | |
| 5.86m x 3.4m | 19'2" x 11'2" |
| BEDROOM | |
| 3.19m x 2.8m | 10'5" x 9'2" |

TYPE 7 - PLOT 203

| | |
|-----------------------|---------------|
| KITCHEN / LIVING AREA | |
| 6.74m x 3.58m | 22'1" x 11'7" |
| BEDROOM 1 | |
| 3.19m x 2.9m | 10'5" x 9'5" |
| BEDROOM 2 | |
| 3.19m x 2.9m | 10'5" x 9'5" |

B Bathroom
 ES En suite
 U Utility
 W Wardrobe



**CREST
NICHOLSON**

BRIGHTWELLS YARD

WATSON HOUSE

THIRD FLOOR

With outside space facing both east and west, you'll have the perfect opportunity to enjoy the sun both with breakfast and with an evening drink. The west-facing terrace which leads from the living room would provide the ideal situation for an al fresco evening meal, just as the east-facing balcony leading from the kitchen is the perfect spot for morning coffee.

These apartments are generously sized throughout, with three double bedrooms, two en suite bathrooms, a main bathroom, and ample storage space.

3 BEDROOM APARTMENTS





TYPE 9 - PLOT 205

| | |
|------------------------------|---------------|
| KITCHEN / LIVING AREA | |
| 9m x 5.61m | 29'5" x 18'4" |
| BEDROOM 1 | |
| 4.82m x 3.34m | 15'8" x 11'0" |
| BEDROOM 2 | |
| 5.39m x 3.69m | 17'7" x 12'1" |
| BEDROOM 3 | |
| 4.02m x 3m | 13'2" x 9'8" |

TYPE 8 - PLOT 204

| | |
|------------------------------|---------------|
| KITCHEN / LIVING AREA | |
| 7.01m x 5.75m | 23'0" x 18'9" |
| BEDROOM 1 | |
| 3.72m x 3.35m | 12'2" x 11'0" |
| BEDROOM 2 | |
| 3.65m x 3.54m | 12'0" x 11'6" |
| BEDROOM 3 | |
| 3.91m x 3.35m | 12'8" x 11'0" |

B Bathroom
 ES En suite
 U Utility
 W Wardrobe



BRIGHTWELLS YARD SPECIFICATION

From integrated appliances to modern, clean finishes, you can look forward to a stylish new home with a wonderful specification throughout.

1, 2 & 3 BEDROOM APARTMENTS



BRIGHTWELLS YARD

East Street, Farnham,
Surrey, GU9 7UA

For all enquiries please call

01252 982426

brightwellsyard@crestnicholson.com

crestnicholson.com/brightwellsyard

SPECIFICATION

KITCHEN

- Fully fitted contemporary kitchen
- Integrated single oven with 4 ring ceramic hob
- Integrated extractor hood
- Integrated fridge/freezer
- Bristan sink with Bristan mixer tap in chrome

BATHROOM & EN SUITE

- Fully fitted white Roca bathroom suite
- Chrome mixer taps and shower fittings
- Porcelanosa tiling to bathroom and en suite
- Heated towel rail to bathroom and en suite

DECORATION, JOINERY & DOORS

- Polished chrome ironmongery
- Fitted wardrobes to master bedroom
- Smooth finish pure brilliant white painted walls and ceilings

ELECTRICAL & LIGHTING

- Electrical fittings in white throughout
- Sky Q capabilities
- Telephone point to hall area/cupboard
- LED downlighters to bathroom and en suite

HEATING & ENERGY EFFICIENCY

- 100% energy efficiency lighting throughout
- Electric heating with compact electric radiators

SECURITY & PEACE OF MIND

- Mains operated smoke and heat detectors, with battery backup
- Battery operated carbon monoxide detector

WARRANTY & AFTER CARE

- Complete NHBC 10 year warranty
- Thorough demonstration of your new home before it is handed to you
- Advice provided on the best way to look after your home in the future
- Support from a dedicated customer care team for the first two years



Whilst every effort has been made to ensure that the contents and specification in this brochure is correct and accurate at the time of creation, it may be subject to change and Crest Nicholson reserves the right to amend the contents and specification at any time prior to completion. This contents and specification does not in any way constitute or form any part of a contract of sale transfer or lease. Please ask a sales executive for further details.

Crest Nicholson is a registered developer with the New Homes Quality Code. Please speak to a sales executive if you need further help with any marketing material including provision in another format. 1011471/January 2024.



BRIGHTWELLS YARD

East Street, Farnham,
Surrey, GU9 7UA

For all enquiries please call

01252 982426

brightwellsyard@crestnicholson.com

crestnicholson.com/brightwellsyard



House Type Illustration

Please note, the digital illustrations are for illustration purposes only and any may not accurately depict elevation materials, gradients, landscaping or street furniture and may be subject to change. Whilst every effort has been made to ensure that the measurements and dimensions referred to in this brochure are an accurate reflection of the dimensions and measurements of the plots when built, the dimensions may vary from the measurements shown in the brochure save that any such variation shall be no greater than +/- 50mm of the measurements referred to in the brochure. You are strongly advised, therefore, not to order any carpets, appliances or any other goods which depend on precise dimensions before carrying out an actual measurement within your reserved plot. Whilst every reasonable effort has been made to ensure that the information contained in this brochure is correct, it is designed specifically as a guide only and does not constitute or form any part of a contract of sale transfer or lease unless any point that you specifically want to rely on is confirmed in writing by Crest Nicholson and is referred to in the contract. Please ask a sales executive for further details. Crest Nicholson is a registered developer with the New Homes Quality Code. Please speak to a sales executive if you need further help with any marketing material including provision in another format.

Development Map/Site Plan

Please note, the digital illustrations are for illustration purposes only and any may not accurately depict elevation materials, gradients, landscaping or street furniture. Whilst every effort has been made to ensure that the information in this site map is correct and accurate at the time of creation, it may be subject to change and Crest Nicholson reserves the right to amend the layout of the development. This site map does not in any way constitute or form any part of a contract of sale transfer or lease. Please ask a sales executive for further details. STU9064/January 2023.

