



**CREST
NICHOLSON**

WALTON COURT GARDENS

WALTON-ON-THAMES • SURREY

The picturesque, leafy beauty of Walton-on-Thames and excellent transport links being within easy reach are what make your new home at Walton Court Gardens ideally situated.

1, 2 & 3 BEDROOM APARTMENTS AND 3 BEDROOM TOWNHOUSES





WELCOME TO LIFE IN SURREY

Whether it's shops, schools or leisure facilities, you'll find a wonderful choice available to you within a short distance of home.

On your doorstep

When you have simple access to all the amenities you need, your new home is something you can enjoy even more.

- 1 Tesco Express
- 2 The Heart Shopping Centre
- 3 Everyman Cinema
- 4 PureGym
- 5 Bushy Park
- 6 Burhill Golf Club
- 7 Thorpe Park




Education

Whatever age your children are, you will easily find the perfect school for them, thanks to the excellent choice close by.

- 8 Danesfield Manor School
- 9 Walton Oak School
- 10 Three Rivers Academy
- 11 Bell Farm Primary School
- 12 Cardinal Newman Catholic Primary School
- 13 Ashley CofE Primary School
- 14 Westward Preparatory School
- 15 Toad Hall Nursery

Travel

With excellent road and rail connections at your fingertips, getting to work, school or enjoying days out is effortless.

-  Walton-on-Thames town centre – 4 minutes' drive
-  Walton-on-Thames train station – 5 minutes' walk
-  Hersham – 5 minutes' drive
-  London Waterloo – 25 minutes (by train - from Walton-on-Thames)
-  Heathrow Airport – 22 minutes' drive





WALTON COURT GARDENS

Station Avenue, Walton-on-Thames,
Surrey KT12 1FJ

For all enquiries please call

01932 282 185

crestnicholson.com/waltoncourtgardens



A BEAUTIFUL PLACE TO CALL HOME IN A PICTURESQUE RIVERSIDE TOWN

Walton Court Gardens is a wonderful new collection of 1, 2 & 3 bedroom apartments and 3 bedroom townhouses.

Surrounded by green open spaces, the new life being breathed into the former Grade II listed Birds Eye headquarters will ensure a collection of exciting, beautifully designed new homes. As well as living in amongst its legacy, you can also look forward to being close to a wealth of great shops, schools and leisure options. Walton Court Gardens really is a delightful place for you and your family.

Choosing a new home here will mean you can experience everything this superb location has to offer. The Thames River Path means you can take a stroll along

the banks and enjoy being close to nature, or you can relax on one of the many river boats that cruise up and down. For shoppers, you are just 20 minutes away from the centre of Walton-on-Thames, where you will find The Heart Shopping Centre, with more than 59 stores and restaurants, plus a library and a gym. One of the most popular places to catch up with friends or family for brunch is the 1955 Club, or, if you want more of an Italian-inspired meal, there is an excellent choice of Italian restaurants outside The Heart.

Of course, one of the other advantages of this wonderful location is the excellent transport connections at your fingertips. Walton-on-Thames station is around 5 minutes away on foot, and provides services to London Waterloo in approximately 25 minutes. The M3 and M25 are easily accessible, and Heathrow Airport is just a 22 minute drive away.



WALTON COURT GARDENS

DEVELOPMENT PLAN

With a collection of 1, 2 & 3 bedroom apartments and 3 bedroom townhouses to choose from, you will find the perfect new, well-designed home you have been looking for.

1, 2 & 3 BEDROOM APARTMENTS AND 3 BEDROOM TOWNHOUSES



Map locations are approximate. Some journey times include changes. Travel times are approximate only. Source: Google Maps. CR5076/September 2020.

1, 2 & 3 BEDROOM APARTMENTS

- Somers House
- Carver House
- Emporar Court
- Gentoo Court
- Humboldt Court
- Imperial Court
- King Court
- Rockhopper Court
- Watson House

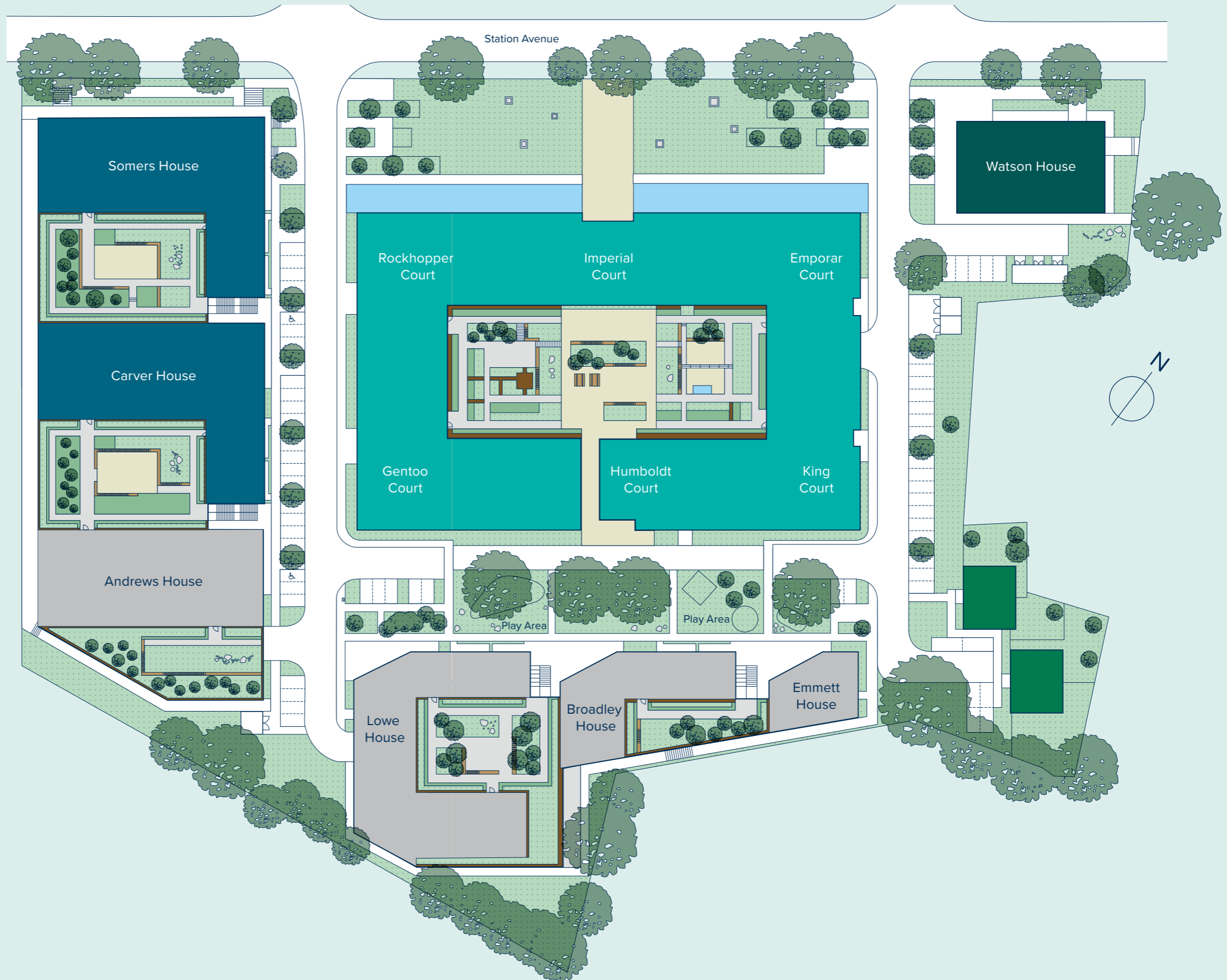
3 BEDROOM TOWNHOUSES

- Townhouses

Affordable and shared ownership homes

- Bollards
- Disabled Parking Space
- Menhir sculpture
- Litter bin

Please note: Landscaping between each block is at 1st floor level. Block H landscaping is at ground floor level.





WALTON COURT GARDENS
WATSON HOUSE
APARTMENT TYPE A
 HOMES 2, 8 & 14

This thoughtfully designed 2 bedroom apartment offers a spacious and light kitchen/living/dining area with a good-sized balcony, an en suite and separate bathroom.

2 BEDROOM HOME



WALTON COURT GARDENS
 Station Avenue, Walton-on-Thames,
 Surrey KT12 1FJ

For all enquiries please call

01932 282 185
crestnicholson.com/waltoncourtgardens



KITCHEN/LIVING/DINING AREA

7.94m x 4.13m 26'0" x 13'6"

BEDROOM 1

4.12m x 3.35m 13'6" x 11'0"

BEDROOM 2

4.12m x 2.99m 13'6" x 10'1"



AC Airing Cupboard W Fitted Wardrobe

Please note, the digital illustrations may not accurately depict elevation materials, gradients, landscaping or street furniture. All stated dimensions are subject to tolerances of +/- 50mm. You are strongly advised, therefore, not to order any carpets, appliances or any other goods which depend on accurate dimensions before carrying out a check measure within your reserved plot. Kitchen layouts are again indicative only and are subject to change before completion. Doors/windows subject to final confirmation. Whilst every reasonable effort has been made to ensure that the information contained in this brochure is correct, it is designed specifically as a guide only and Crest Nicholson reserves the right to amend the specification as necessary and without notice at its absolute discretion. This does not constitute or form any part of a contract of sale transfer or lease unless any point that you specifically want to rely on is confirmed in writing by Crest Nicholson and referred to in the contract. Please ask a Sales Advisor for further details. CRS076/September 2020.



WALTON COURT GARDENS
WATSON HOUSE
APARTMENT TYPE B

HOMES 3, 9, 15 & 20

Offering a spacious, open plan kitchen/living/dining area with a good-sized balcony, this 2 bedroom apartment also benefits from an en suite and separate bathroom.

2 BEDROOM HOME



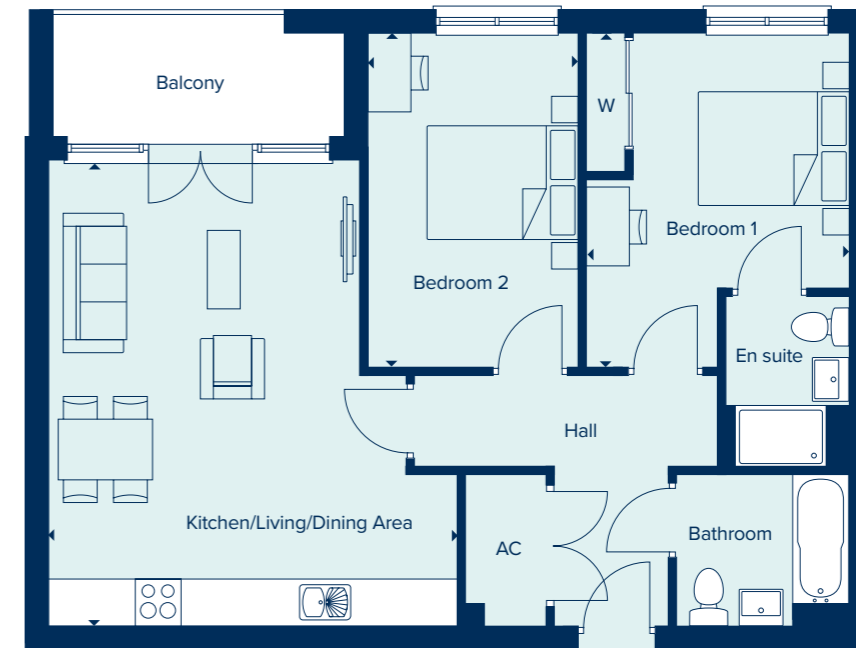
WALTON COURT GARDENS

Station Avenue, Walton-on-Thames,
 Surrey KT12 1FJ

For all enquiries please call

01932 282 185

crestnicholson.com/waltoncourtgardens



KITCHEN/LIVING/DINING AREA

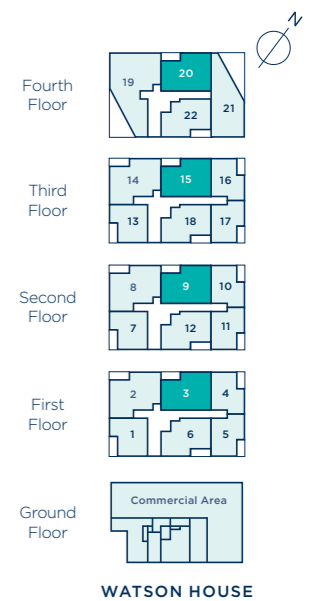
6.12m x 5.36m 20'1" x 17'7"

BEDROOM 1

4.38m x 3.43m 14'4" x 11'3"

BEDROOM 2

4.38m x 2.72m 14'4" x 8'11"



AC Airing Cupboard W Fitted Wardrobe

Please note, the digital illustrations may not accurately depict elevation materials, gradients, landscaping or street furniture. All stated dimensions are subject to tolerances of +/- 50mm. You are strongly advised, therefore, not to order any carpets, appliances or any other goods which depend on accurate dimensions before carrying out a check measure within your reserved plot. Kitchen layouts are again indicative only and are subject to change before completion. Doors/windows subject to final confirmation. Whilst every reasonable effort has been made to ensure that the information contained in this brochure is correct, it is designed specifically as a guide only and Crest Nicholson reserves the right to amend the specification as necessary and without notice at its absolute discretion. This does not constitute or form any part of a contract of sale transfer or lease unless any point that you specifically want to rely on is confirmed in writing by Crest Nicholson and referred to in the contract. Please ask a Sales Advisor for further details. CRS076/September 2020.



WALTON COURT GARDENS
WATSON HOUSE
APARTMENT TYPE C
 HOMES 4, 10 & 16

A beautiful 1 bedroom apartment, with plenty of space in the bedroom, a good-sized bathroom and a spacious, open plan kitchen/living/dining area with a welcoming balcony.

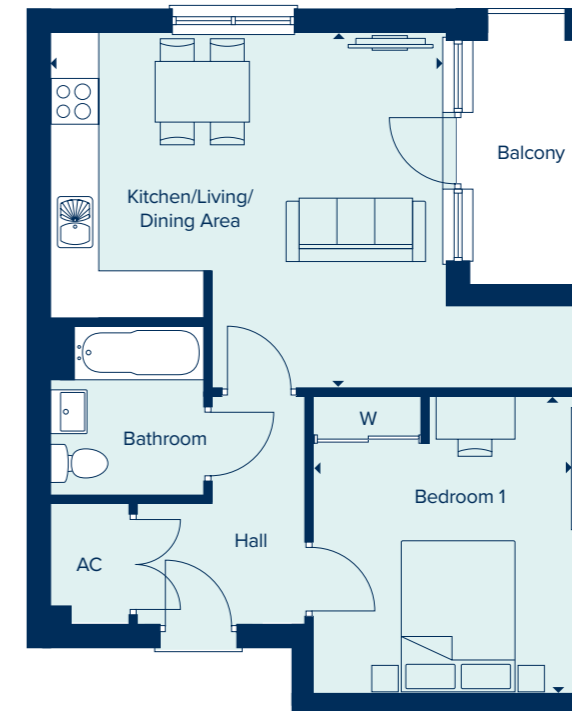
1 BEDROOM HOME



WALTON COURT GARDENS
 Station Avenue, Walton-on-Thames,
 Surrey KT12 1FJ

For all enquiries please call

01932 282 185
crestnicholson.com/waltoncourtgardens



KITCHEN/LIVING/DINING AREA

5.16m x 4.66m 16'11" x 15'3"

BEDROOM 1

3.91m x 3.40m 12'10" x 11'2"



AC Airing Cupboard W Fitted Wardrobe

Please note, the digital illustrations may not accurately depict elevation materials, gradients, landscaping or street furniture. All stated dimensions are subject to tolerances of +/- 50mm. You are strongly advised, therefore, not to order any carpets, appliances or any other goods which depend on accurate dimensions before carrying out a check measure within your reserved plot. Kitchen layouts are again indicative only and are subject to change before completion. Doors/windows subject to final confirmation. Whilst every reasonable effort has been made to ensure that the information contained in this brochure is correct, it is designed specifically as a guide only and Crest Nicholson reserves the right to amend the specification as necessary and without notice at its absolute discretion. This does not constitute or form any part of a contract of sale transfer or lease unless any point that you specifically want to rely on is confirmed in writing by Crest Nicholson and referred to in the contract. Please ask a Sales Advisor for further details. CRS076/September 2020.



WALTON COURT GARDENS
WATSON HOUSE
APARTMENT TYPE D

HOMES 5, 11 & 17

This thoughtfully considered 1 bedroom apartment offers a spacious balcony from the light and airy open plan kitchen/living/dining area, as well as a good-sized bathroom.

1 BEDROOM HOME



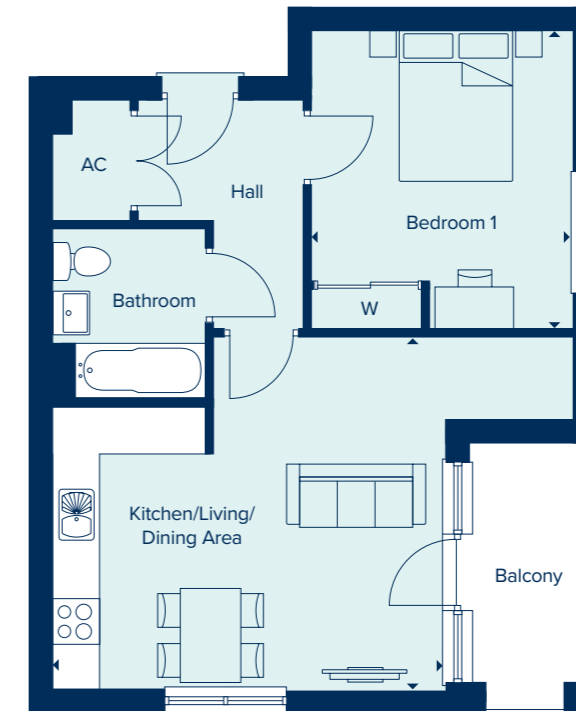
WALTON COURT GARDENS

Station Avenue, Walton-on-Thames,
 Surrey KT12 1FJ

For all enquiries please call

01932 282 185

crestnicholson.com/waltoncourtgardens



KITCHEN/LIVING/DINING AREA

5.16m x 4.66m 16'11" x 15'3"

BEDROOM 1

3.91m x 3.40m 12'10" x 11'2"



AC Airing Cupboard W Fitted Wardrobe

Please note, the digital illustrations may not accurately depict elevation materials, gradients, landscaping or street furniture. All stated dimensions are subject to tolerances of +/- 50mm. You are strongly advised, therefore, not to order any carpets, appliances or any other goods which depend on accurate dimensions before carrying out a check measure within your reserved plot. Kitchen layouts are again indicative only and are subject to change before completion. Doors/windows subject to final confirmation. Whilst every reasonable effort has been made to ensure that the information contained in this brochure is correct, it is designed specifically as a guide only and Crest Nicholson reserves the right to amend the specification as necessary and without notice at its absolute discretion. This does not constitute or form any part of a contract of sale transfer or lease unless any point that you specifically want to rely on is confirmed in writing by Crest Nicholson and referred to in the contract. Please ask a Sales Advisor for further details. CRS076/September 2020.



WALTON COURT GARDENS

WATSON HOUSE
APARTMENT TYPE E

HOMES 6, 12, 18 & 22

This carefully designed 2 bedroom apartment is where you can enjoy a spacious, open plan kitchen/living/dining area, a good-sized balcony and a relaxing bathroom.

2 BEDROOM HOME



WALTON COURT GARDENS

Station Avenue, Walton-on-Thames,
Surrey KT12 1FJ

For all enquiries please call

01932 282 185

crestnicholson.com/waltoncourtgardens



KITCHEN/LIVING/DINING AREA

6.12m x 4.39m 20'1" x 14'5"

BEDROOM 1

5.02m x 3.24m 16'5" x 10'7"

BEDROOM 2

3.59m x 2.60m 11'9" x 8'6"



AC Airing Cupboard W Fitted Wardrobe

Please note, the digital illustrations may not accurately depict elevation materials, gradients, landscaping or street furniture. All stated dimensions are subject to tolerances of +/- 50mm. You are strongly advised, therefore, not to order any carpets, appliances or any other goods which depend on accurate dimensions before carrying out a check measure within your reserved plot. Kitchen layouts are again indicative only and are subject to change before completion. Doors/windows subject to final confirmation. Whilst every reasonable effort has been made to ensure that the information contained in this brochure is correct, it is designed specifically as a guide only and Crest Nicholson reserves the right to amend the specification as necessary and without notice at its absolute discretion. This does not constitute or form any part of a contract of sale transfer or lease unless any point that you specifically want to rely on is confirmed in writing by Crest Nicholson and referred to in the contract. Please ask a Sales Advisor for further details. CRS076/September 2020.



WALTON COURT GARDENS

WATSON HOUSE
APARTMENT TYPE F

HOMES 1, 7 & 13

Offering plenty of flexible space in the open plan kitchen/living/dining area, this beautiful 1 bedroom apartment also has a welcoming balcony and a good-sized bathroom.

1 BEDROOM HOME



WALTON COURT GARDENS

Station Avenue, Walton-on-Thames,
Surrey KT12 1FJ

For all enquiries please call

01932 282 185

crestnicholson.com/waltoncourtgardens



KITCHEN/LIVING/DINING AREA

6.21m x 4.13m 20'4" x 13'6"

BEDROOM 1

4.44m x 3.53m 14'7" x 11'7"



AC Airing Cupboard W Fitted Wardrobe

Please note, the digital illustrations may not accurately depict elevation materials, gradients, landscaping or street furniture. All stated dimensions are subject to tolerances of +/- 50mm. You are strongly advised, therefore, not to order any carpets, appliances or any other goods which depend on accurate dimensions before carrying out a check measure within your reserved plot. Kitchen layouts are again indicative only and are subject to change before completion. Doors/windows subject to final confirmation. Whilst every reasonable effort has been made to ensure that the information contained in this brochure is correct, it is designed specifically as a guide only and Crest Nicholson reserves the right to amend the specification as necessary and without notice at its absolute discretion. This does not constitute or form any part of a contract of sale transfer or lease unless any point that you specifically want to rely on is confirmed in writing by Crest Nicholson and referred to in the contract. Please ask a Sales Advisor for further details. CRS076/September 2020.



WALTON COURT GARDENS

WATSON HOUSE APARTMENT TYPE G

HOME 21

A wonderfully designed 2 bedroom apartment, with a large kitchen/living/dining area with an expansive balcony, and bedroom 1 benefiting from an en suite and balcony.

2 BEDROOM HOME



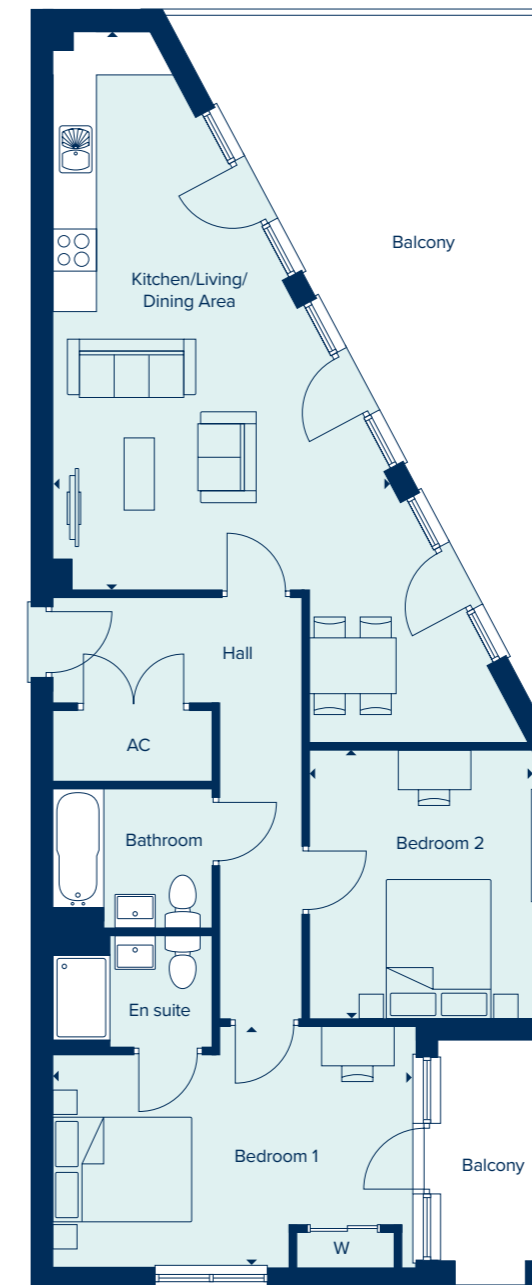
WALTON COURT GARDENS

Station Avenue, Walton-on-Thames,
Surrey KT12 1FJ

For all enquiries please call

01932 282 185

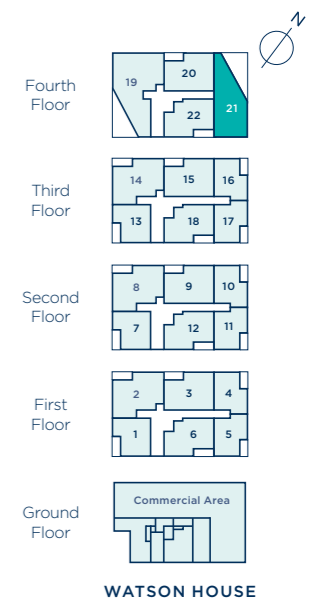
crestnicholson.com/waltoncourtgardens



KITCHEN/LIVING/DINING AREA
8.04m x 4.76m 26'3" x 15'7"

BEDROOM 1
5.14m x 3.48m 16'10" x 11'5"

BEDROOM 2
3.82m x 3.19m 12'6" x 10'5"



AC Airing Cupboard W Fitted Wardrobe

Please note, the digital illustrations may not accurately depict elevation materials, gradients, landscaping or street furniture. All stated dimensions are subject to tolerances of +/- 50mm. You are strongly advised, therefore, not to order any carpets, appliances or any other goods which depend on accurate dimensions before carrying out a check measure within your reserved plot. Kitchen layouts are again indicative only and are subject to change before completion. Doors/windows subject to final confirmation. Whilst every reasonable effort has been made to ensure that the information contained in this brochure is correct, it is designed specifically as a guide only and Crest Nicholson reserves the right to amend the specification as necessary and without notice at its absolute discretion. This does not constitute or form any part of a contract of sale transfer or lease unless any point that you specifically want to rely on is confirmed in writing by Crest Nicholson and referred to in the contract. Please ask a Sales Advisor for further details. CRS076/September 2020.



WALTON COURT GARDENS

WATSON HOUSE APARTMENT TYPE H

HOME 19

Offering 3 good-sized bedrooms, there is an en suite and balcony to bedroom 1 and a large balcony to the spacious, open plan kitchen/living/dining area.

3 BEDROOM HOME



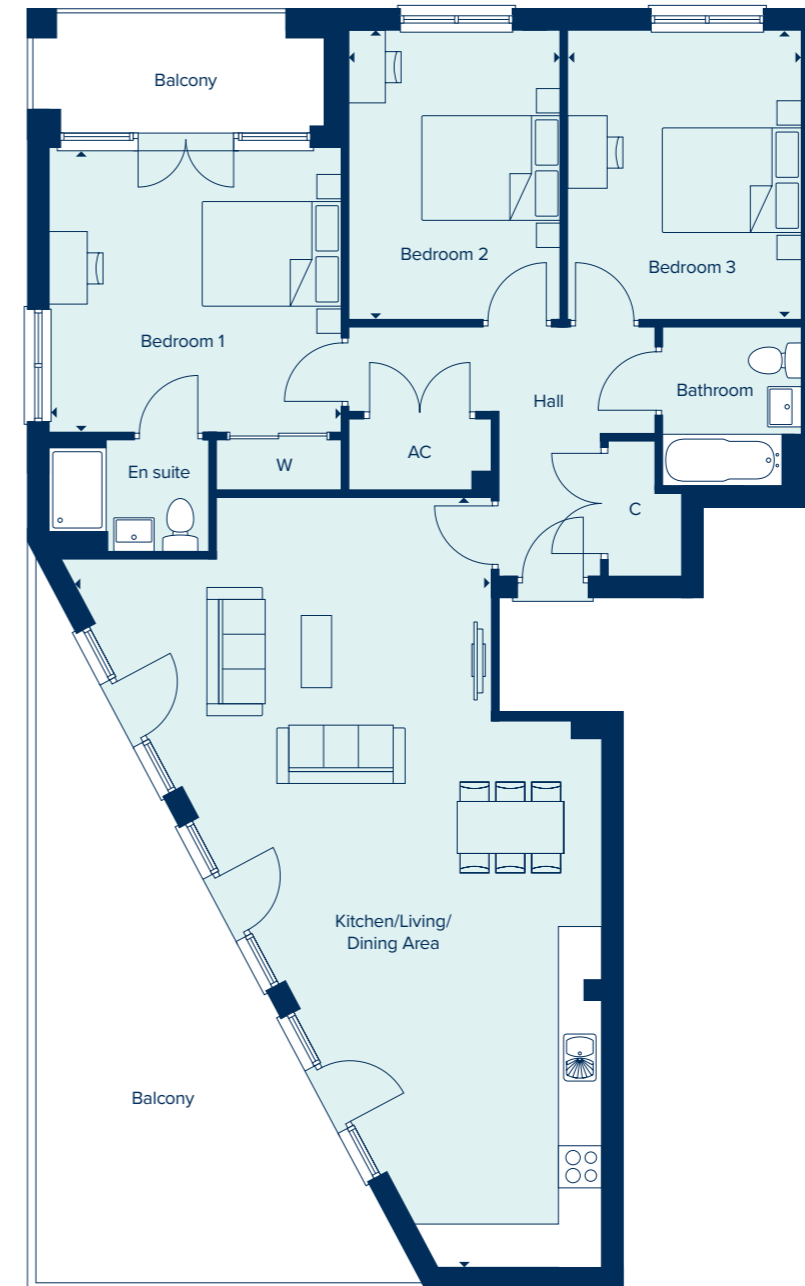
WALTON COURT GARDENS

Station Avenue, Walton-on-Thames,
Surrey KT12 1FJ

For all enquiries please call

01932 282 185

crestnicholson.com/waltoncourtgardens

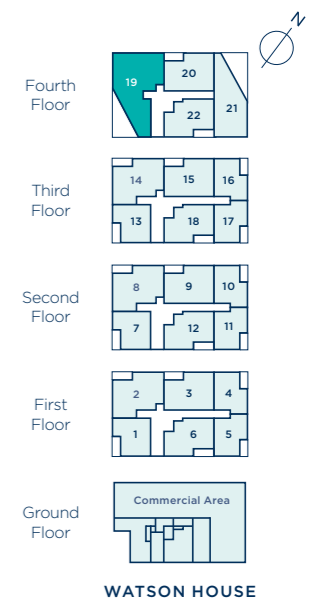


KITCHEN/LIVING/DINING AREA
11.04m x 5.88m 36'3" x 19'3"

BEDROOM 1
4.16m x 4.06m 13'7" x 13'4"

BEDROOM 2
4.12m x 3.02m 13'6" x 9'11"

BEDROOM 3
4.12m x 3.34m 13'6" x 11'0"



AC Airing Cupboard W Fitted Wardrobe C Cupboard

Please note, the digital illustrations may not accurately depict elevation materials, gradients, landscaping or street furniture. All stated dimensions are subject to tolerances of +/- 50mm. You are strongly advised, therefore, not to order any carpets, appliances or any other goods which depend on accurate dimensions before carrying out a check measure within your reserved plot. Kitchen layouts are again indicative only and are subject to change before completion. Doors/windows subject to final confirmation. Whilst every reasonable effort has been made to ensure that the information contained in this brochure is correct, it is designed specifically as a guide only and Crest Nicholson reserves the right to amend the specification as necessary and without notice at its absolute discretion. This does not constitute or form any part of a contract of sale transfer or lease unless any point that you specifically want to rely on is confirmed in writing by Crest Nicholson and referred to in the contract. Please ask a Sales Advisor for further details. CRS076/September 2020.



CREST
NICHOLSON

WALTON COURT GARDENS

SOMERS HOUSE APARTMENT TYPE AA HOMES 2101, 2102

A beautiful 1 bedroom apartment, with plenty of space in the bedroom,
a good-sized bathroom and a spacious, open plan kitchen/living/dining area.

1 BEDROOM HOME





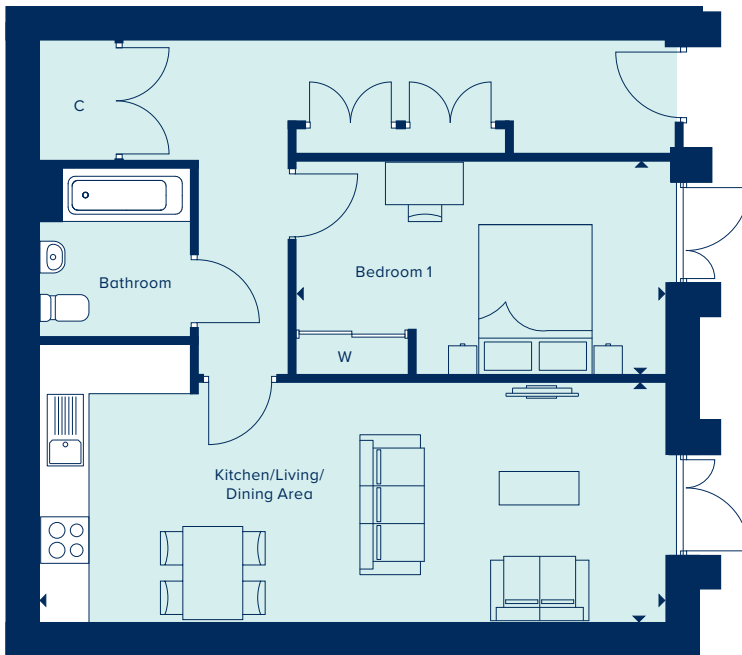
**CREST
NICHOLSON**

SOMERS HOUSE

1 Bedroom Home

Total Area: 2101 - 693 sq ft, 2102 - 687 sq ft

crestnicholson.com

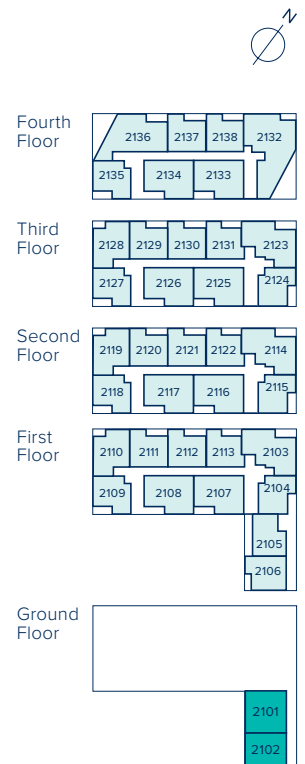


KITCHEN/LIVING/DINING AREA

8.28m x 3.22m 27'2" x 10'6"

BEDROOM 1

4.90m x 2.81m 16'1" x 9'2"



C Cupboard W Wardrobe • Max Dimension

All images are used for illustrative purposes only and are not necessarily a precise representation. Images may be of a slightly different model of home and may include different specifications for example in respect of brick colour and options which involve additional cost. Individual features such as window, brick, carpets, paint and other material colours may vary and the specification of fittings may vary. Any furnishings and furniture are not included in any sale. Please check with our sales representatives for details of the exact specifications available at the development for each type of home. STU9061/February 2021.





CREST
NICHOLSON

WALTON COURT GARDENS

SOMERS HOUSE APARTMENT TYPE BB HOMES 2110, 2119, 2128

A beautiful 1 bedroom apartment, with plenty of space in the bedroom, a good-sized bathroom and a spacious, open plan kitchen/living/dining area with a welcoming balcony.

1 BEDROOM HOME





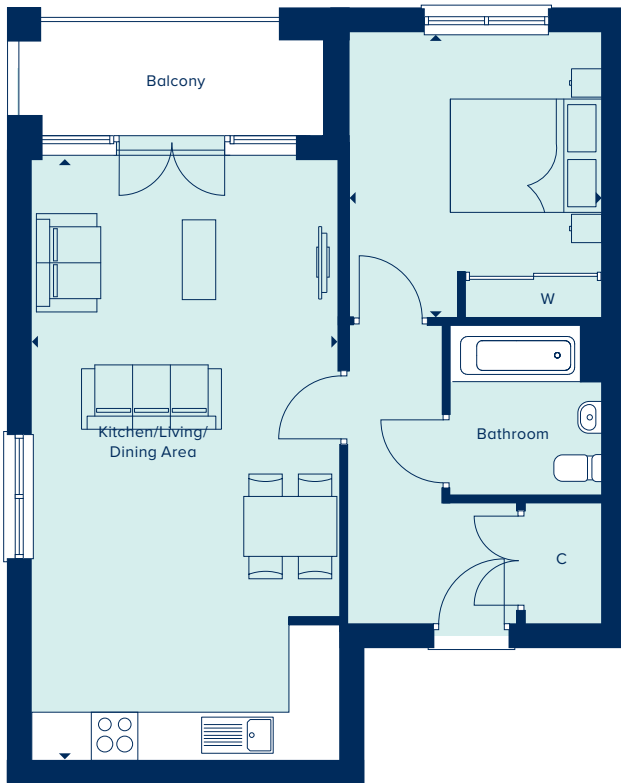
**CREST
NICHOLSON**

SOMERS HOUSE

1 Bedroom Home

Total Area: 633 sq ft

crestnicholson.com

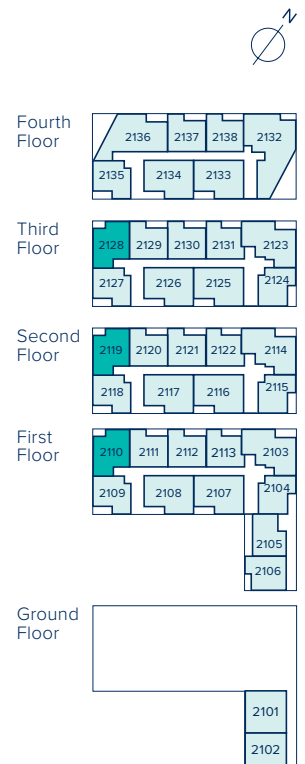


KITCHEN/LIVING/DINING AREA

7.92m x 4.00m 25'11" x 13'1"

BEDROOM 1

3.73m x 3.33m 12'2" x 10'11"



C Cupboard W Wardrobe • Max Dimension

All images are used for illustrative purposes only and are not necessarily a precise representation. Images may be of a slightly different model of home and may include different specifications for example in respect of brick colour and options which involve additional cost. Individual features such as window, brick, carpets, paint and other material colours may vary and the specification of fittings may vary. Any furnishings and furniture are not included in any sale. Please check with our sales representatives for details of the exact specifications available at the development for each type of home. STU9061/February 2021.





CREST
NICHOLSON

WALTON COURT GARDENS

SOMERS HOUSE APARTMENT TYPE CC HOMES 2111, 2112, 2120, 2121, 2129, 2130, 2137

A beautiful 1 bedroom apartment, with plenty of space in the bedroom, a good-sized bathroom and a spacious, open plan kitchen/living/dining area with a welcoming balcony.

1 BEDROOM HOME





**CREST
NICHOLSON**

SOMERS HOUSE

1 Bedroom Home

Total Area: 573 sq ft

crestnicholson.com

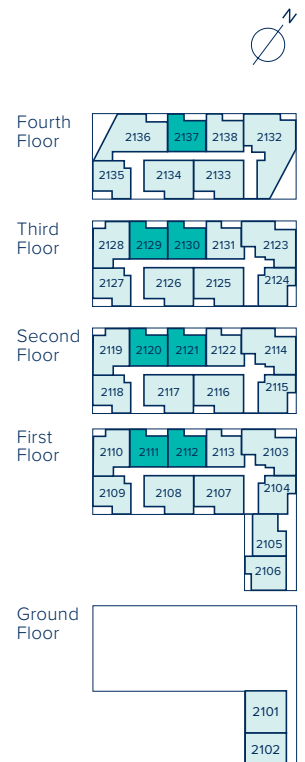


KITCHEN/LIVING/DINING AREA

6.11m x 4.30m 20'0" x 14'1"

BEDROOM 1

3.73m x 3.38m 12'2" x 11'1"



C Cupboard W Wardrobe • Max Dimension

All images are used for illustrative purposes only and are not necessarily a precise representation. Images may be of a slightly different model of home and may include different specifications for example in respect of brick colour and options which involve additional cost. Individual features such as window, brick, carpets, paint and other material colours may vary and the specification of fittings may vary. Any furnishings and furniture are not included in any sale. Please check with our sales representatives for details of the exact specifications available at the development for each type of home. STU9061/February 2021.





CREST
NICHOLSON

WALTON COURT GARDENS

SOMERS HOUSE APARTMENT TYPE DD HOMES 2113, 2122, 2131, 2138

A beautiful 1 bedroom apartment, with plenty of space in the bedroom, a good-sized bathroom and a spacious, open plan kitchen/living/dining area with a welcoming balcony.

1 BEDROOM HOME





**CREST
NICHOLSON**

SOMERS HOUSE

1 Bedroom Home

Total Area: 559 sq ft

crestnicholson.com



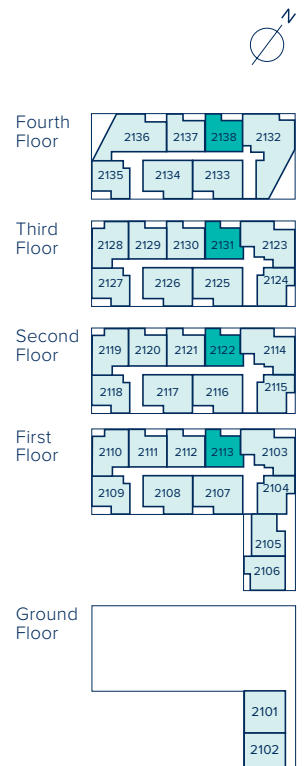
KITCHEN/LIVING/DINING AREA

6.11m x 3.97m 20'0" x 13'0"

BEDROOM 1

3.73m x 3.22m 12'2" x 10'6"

C Cupboard W Wardrobe • Max Dimension



All images are used for illustrative purposes only and are not necessarily a precise representation. Images may be of a slightly different model of home and may include different specifications for example in respect of brick colour and options which involve additional cost. Individual features such as window, brick, carpets, paint and other material colours may vary and the specification of fittings may vary. Any furnishings and furniture are not included in any sale. Please check with our sales representatives for details of the exact specifications available at the development for each type of home. STU9061/February 2021.





CREST
NICHOLSON

WALTON COURT GARDENS

SOMERS HOUSE APARTMENT TYPE EE HOMES 2103, 2114, 2123

This carefully designed 2 bedroom apartment is where you can enjoy a spacious, open plan kitchen/living/dining area, a good-sized balcony and a relaxing bathroom.

2 BEDROOM HOME





**CREST
NICHOLSON**

SOMERS HOUSE

2 Bedroom Home

Total Area: 847 sq ft

crestnicholson.com



KITCHEN/LIVING/DINING AREA

7.92m x 3.61m 25'11" x 11'10"

BEDROOM 1

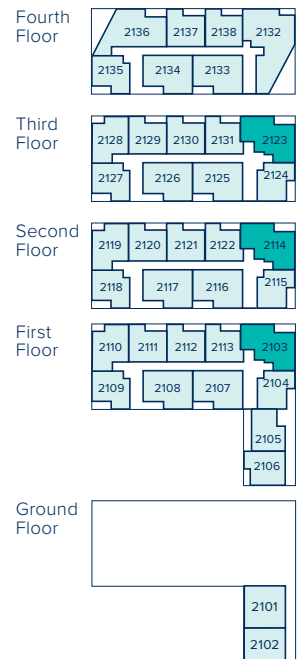
3.36m x 3.30m 11'0" x 10'9"

BEDROOM 2

3.53m x 3.35m 11'7" x 10'11"

C Cupboard W Wardrobe • Max Dimension

All images are used for illustrative purposes only and are not necessarily a precise representation. Images may be of a slightly different model of home and may include different specifications for example in respect of brick colour and options which involve additional cost. Individual features such as window, brick, carpets, paint and other material colours may vary and the specification of fittings may vary. Any furnishings and furniture are not included in any sale. Please check with our sales representatives for details of the exact specifications available at the development for each type of home. STU9061/February 2021.





**CREST
NICHOLSON**

WALTON COURT GARDENS

SOMERS HOUSE APARTMENT TYPE FF HOMES 2109, 2118, 2127

A beautiful 1 bedroom apartment, with plenty of space in the bedroom, a good-sized bathroom and a spacious, open plan kitchen/living/dining area with a welcoming balcony.

1 BEDROOM HOME





**CREST
NICHOLSON**

SOMERS HOUSE

1 Bedroom Home

Total Area: 547 sq ft

crestnicholson.com

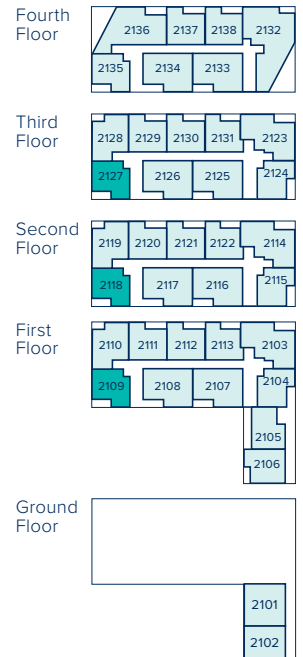


KITCHEN/LIVING/DINING AREA

6.11m x 4.01m 20'0" x 13'1"

BEDROOM 1

3.84m x 3.51m 12'7" x 11'6"



C Cupboard W Wardrobe • Max Dimension

All images are used for illustrative purposes only and are not necessarily a precise representation. Images may be of a slightly different model of home and may include different specifications for example in respect of brick colour and options which involve additional cost. Individual features such as window, brick, carpets, paint and other material colours may vary and the specification of fittings may vary. Any furnishings and furniture are not included in any sale. Please check with our sales representatives for details of the exact specifications available at the development for each type of home. STU9061/February 2021.





CREST
NICHOLSON

WALTON COURT GARDENS

SOMERS HOUSE APARTMENT TYPE FF(A) HOMES 2135

A beautiful 1 bedroom apartment, with plenty of space in the bedroom, a good-sized bathroom and a spacious, open plan kitchen/living/dining area with a welcoming balcony.

1 BEDROOM HOME





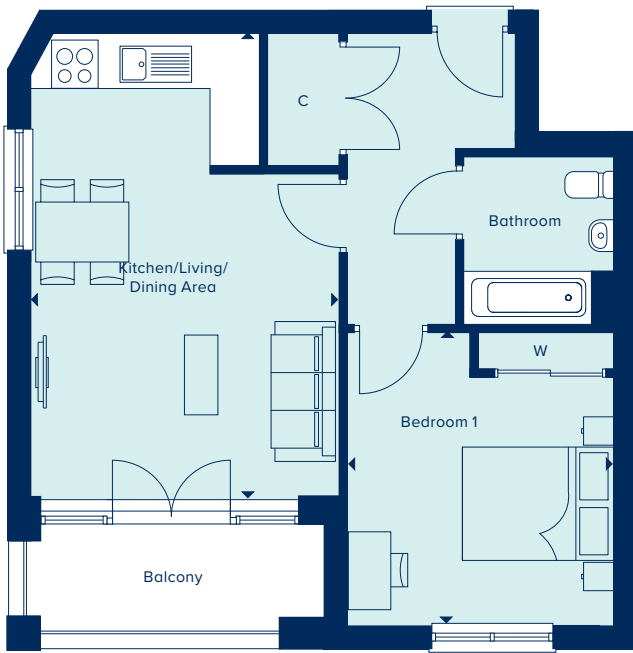
**CREST
NICHOLSON**

SOMERS HOUSE

1 Bedroom Home

Total Area: 546 sq ft

crestnicholson.com

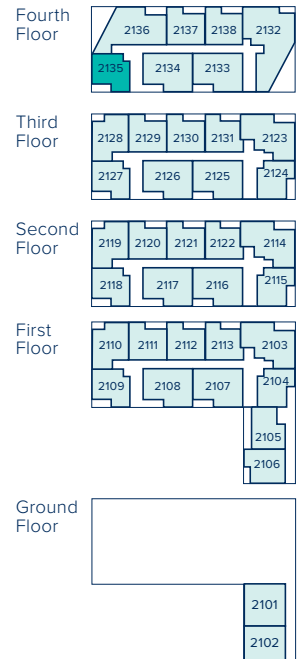


KITCHEN/LIVING/DINING AREA

6.11m x 4.01m 20'0" x 13'1"

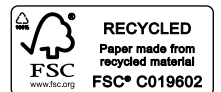
BEDROOM 1

3.84m x 3.51m 12'7" x 11'6"



C Cupboard W Wardrobe • Max Dimension

All images are used for illustrative purposes only and are not necessarily a precise representation. Images may be of a slightly different model of home and may include different specifications for example in respect of brick colour and options which involve additional cost. Individual features such as window, brick, carpets, paint and other material colours may vary and the specification of fittings may vary. Any furnishings and furniture are not included in any sale. Please check with our sales representatives for details of the exact specifications available at the development for each type of home. STU9061/February 2021.





CREST
NICHOLSON

WALTON COURT GARDENS

SOMERS HOUSE APARTMENT TYPE GG HOMES 2107, 2116, 2125, 2133

This carefully designed 2 bedroom apartment is where you can enjoy a spacious, open plan kitchen/living/dining area, a good-sized balcony and a relaxing bathroom.

2 BEDROOM HOME





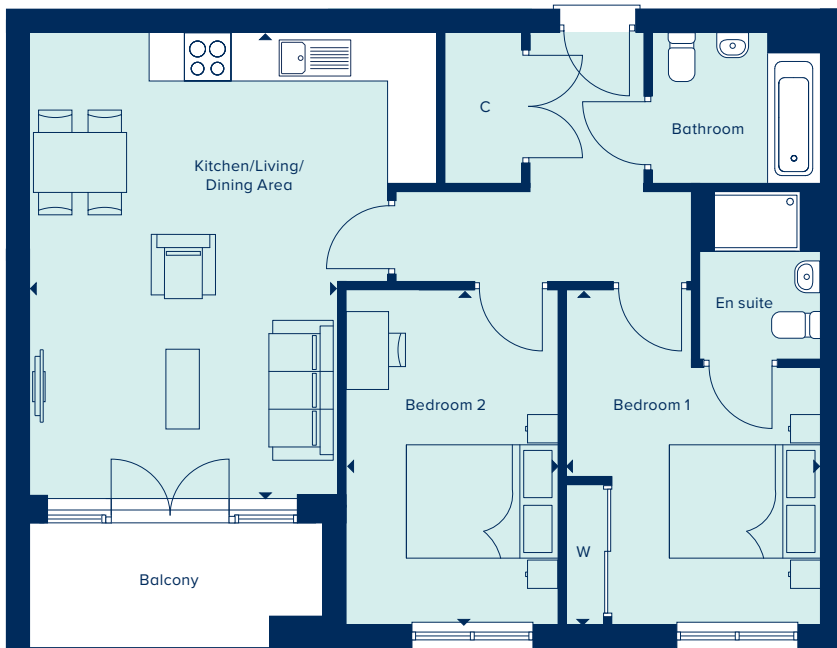
**CREST
NICHOLSON**

SOMERS HOUSE

2 Bedroom Home

Total Area: 805 sq ft

crestnicholson.com



KITCHEN/LIVING/DINING AREA

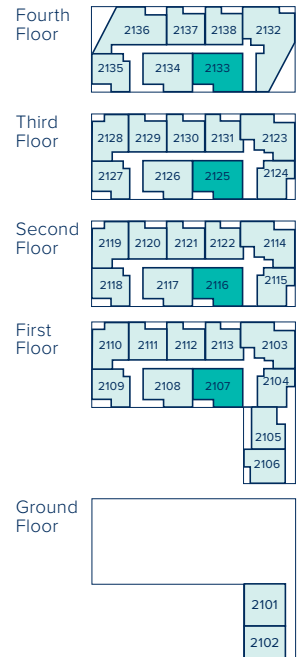
6.11m x 4.08m 20'0" x 13'4"

BEDROOM 1

4.36m x 3.36m 14'3" x 11'0"

BEDROOM 2

4.36m x 2.75m 14'3" x 9'0"



C Cupboard W Wardrobe • Max Dimension

All images are used for illustrative purposes only and are not necessarily a precise representation. Images may be of a slightly different model of home and may include different specifications for example in respect of brick colour and options which involve additional cost. Individual features such as window, brick, carpets, paint and other material colours may vary and the specification of fittings may vary. Any furnishings and furniture are not included in any sale. Please check with our sales representatives for details of the exact specifications available at the development for each type of home. STU9061/February 2021.





CREST
NICHOLSON

WALTON COURT GARDENS

SOMERS HOUSE APARTMENT TYPE GG(A) HOMES 2108, 2117, 2126, 2134

This carefully designed 2 bedroom apartment is where you can enjoy a spacious, open plan kitchen/living/dining area, a good-sized balcony and a relaxing bathroom.

2 BEDROOM HOME





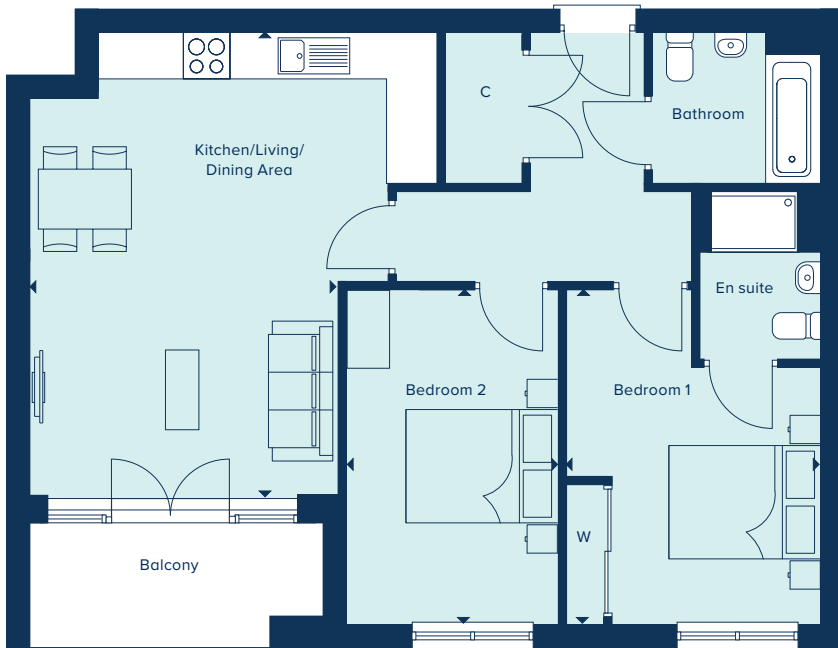
**CREST
NICHOLSON**

SOMERS HOUSE

2 Bedroom Home

Total Area: 795 sq ft

crestnicholson.com



KITCHEN/LIVING/DINING AREA

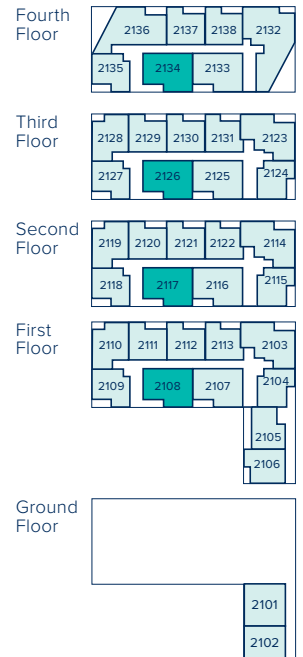
6.11m x 4.08m 20'0" x 13'4"

BEDROOM 1

4.36m x 3.36m 14'3" x 11'0"

BEDROOM 2

4.36m x 2.75m 14'3" x 9'0"



C Cupboard W Wardrobe • Max Dimension

All images are used for illustrative purposes only and are not necessarily a precise representation. Images may be of a slightly different model of home and may include different specifications for example in respect of brick colour and options which involve additional cost. Individual features such as window, brick, carpets, paint and other material colours may vary and the specification of fittings may vary. Any furnishings and furniture are not included in any sale. Please check with our sales representatives for details of the exact specifications available at the development for each type of home. STU9061/February 2021.





CREST
NICHOLSON

WALTON COURT GARDENS

SOMERS HOUSE APARTMENT TYPE HH HOMES 2115, 2124

This thoughtfully considered 1 bedroom apartment offers a spacious balcony from the light and airy open plan kitchen/living/dining area, as well as a good-sized bathroom.

1 BEDROOM HOME





**CREST
NICHOLSON**

SOMERS HOUSE

1 Bedroom Home

Total Area: 539 sq ft

crestnicholson.com

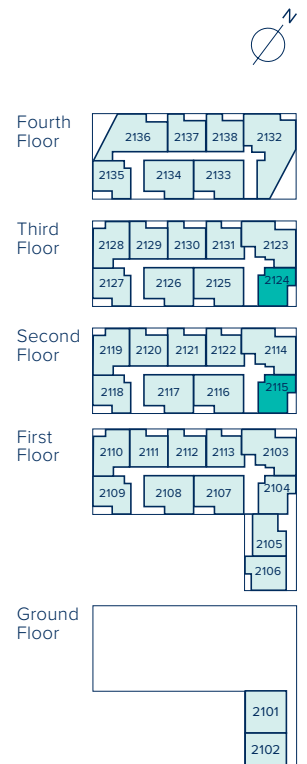


KITCHEN/LIVING/DINING AREA

5.86m x 4.13m 19'2" x 13'6"

BEDROOM 1

3.53m x 3.25m 11'6" x 10'7"



C Cupboard W Wardrobe • Max Dimension

All images are used for illustrative purposes only and are not necessarily a precise representation. Images may be of a slightly different model of home and may include different specifications for example in respect of brick colour and options which involve additional cost. Individual features such as window, brick, carpets, paint and other material colours may vary and the specification of fittings may vary. Any furnishings and furniture are not included in any sale. Please check with our sales representatives for details of the exact specifications available at the development for each type of home. STU9061/February 2021.





CREST
NICHOLSON

WALTON COURT GARDENS

SOMERS HOUSE APARTMENT TYPE II HOMES 2105

This thoughtfully considered 1 bedroom apartment offers a spacious balcony from the bedroom, an airy open plan kitchen/living/dining area, as well as a good-sized bathroom.

1 BEDROOM HOME





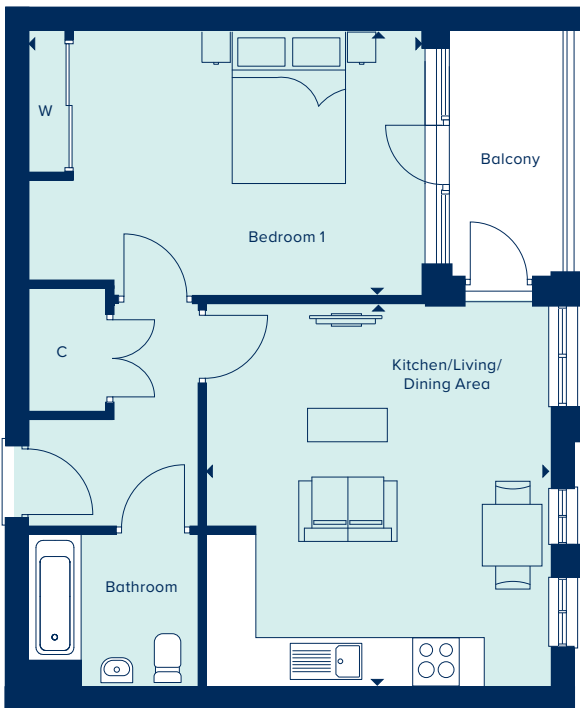
**CREST
NICHOLSON**

SOMERS HOUSE

1 Bedroom Home

Total Area: 572 sq ft

crestnicholson.com

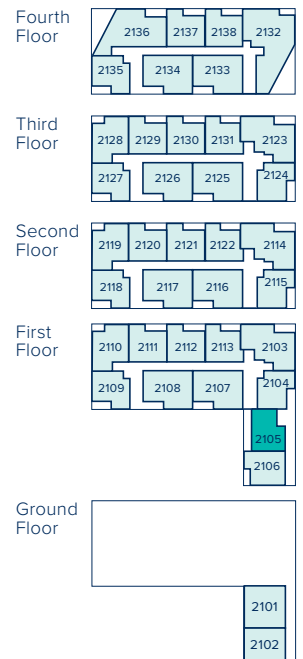


KITCHEN/LIVING/DINING AREA

5.02m x 4.52m 19'2" x 13'6"

BEDROOM 1

5.22m x 3.43m 11'6" x 10'7"



C Cupboard W Wardrobe • Max Dimension

All images are used for illustrative purposes only and are not necessarily a precise representation. Images may be of a slightly different model of home and may include different specifications for example in respect of brick colour and options which involve additional cost. Individual features such as window, brick, carpets, paint and other material colours may vary and the specification of fittings may vary. Any furnishings and furniture are not included in any sale. Please check with our sales representatives for details of the exact specifications available at the development for each type of home. STU9061/February 2021.





CREST
NICHOLSON

WALTON COURT GARDENS

SOMERS HOUSE APARTMENT TYPE JJ HOMES 2106

Offering plenty of flexible space in the open plan kitchen/living/dining area, this beautiful 1 bedroom apartment also has a welcoming balcony and a good-sized bathroom.

1 BEDROOM HOME





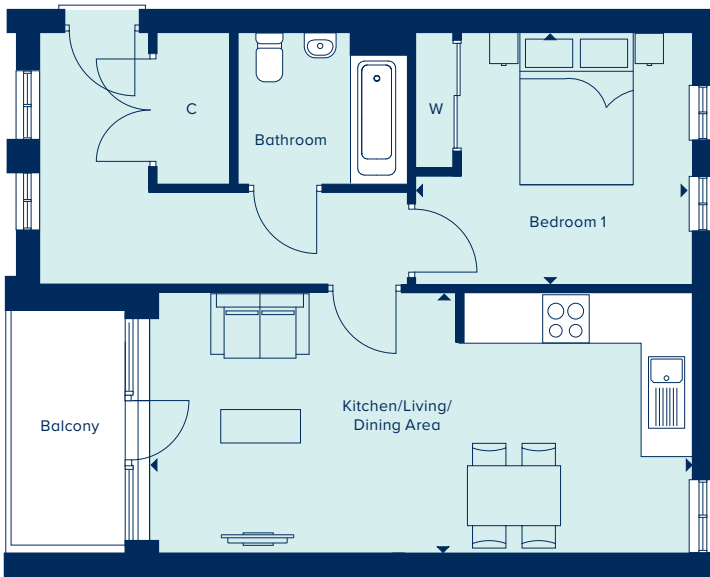
**CREST
NICHOLSON**

SOMERS HOUSE

1 Bedroom Home

Total Area: 571 sq ft

crestnicholson.com

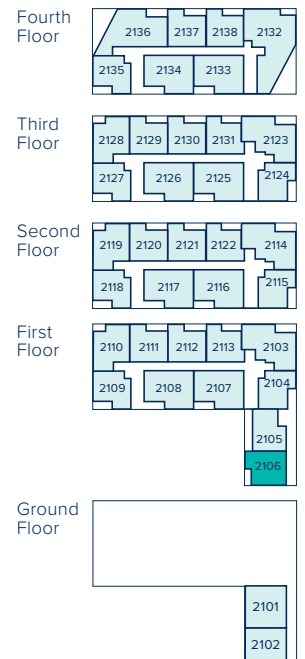


KITCHEN/LIVING/DINING AREA

7.14m x 3.37m 23'5" x 11'0"

BEDROOM 1

3.62m x 3.30m 11'10" x 10'9"



C Cupboard W Wardrobe • Max Dimension

All images are used for illustrative purposes only and are not necessarily a precise representation. Images may be of a slightly different model of home and may include different specifications for example in respect of brick colour and options which involve additional cost. Individual features such as window, brick, carpets, paint and other material colours may vary and the specification of fittings may vary. Any furnishings and furniture are not included in any sale. Please check with our sales representatives for details of the exact specifications available at the development for each type of home. STU9061/February 2021.





CREST
NICHOLSON

WALTON COURT GARDENS

SOMERS HOUSE APARTMENT TYPE OO HOMES 2132

Offering 3 good-sized bedrooms, there is an en suite and balcony to bedroom 1 and a large balcony to the spacious, open plan kitchen/living/dining area.

3 BEDROOM HOME





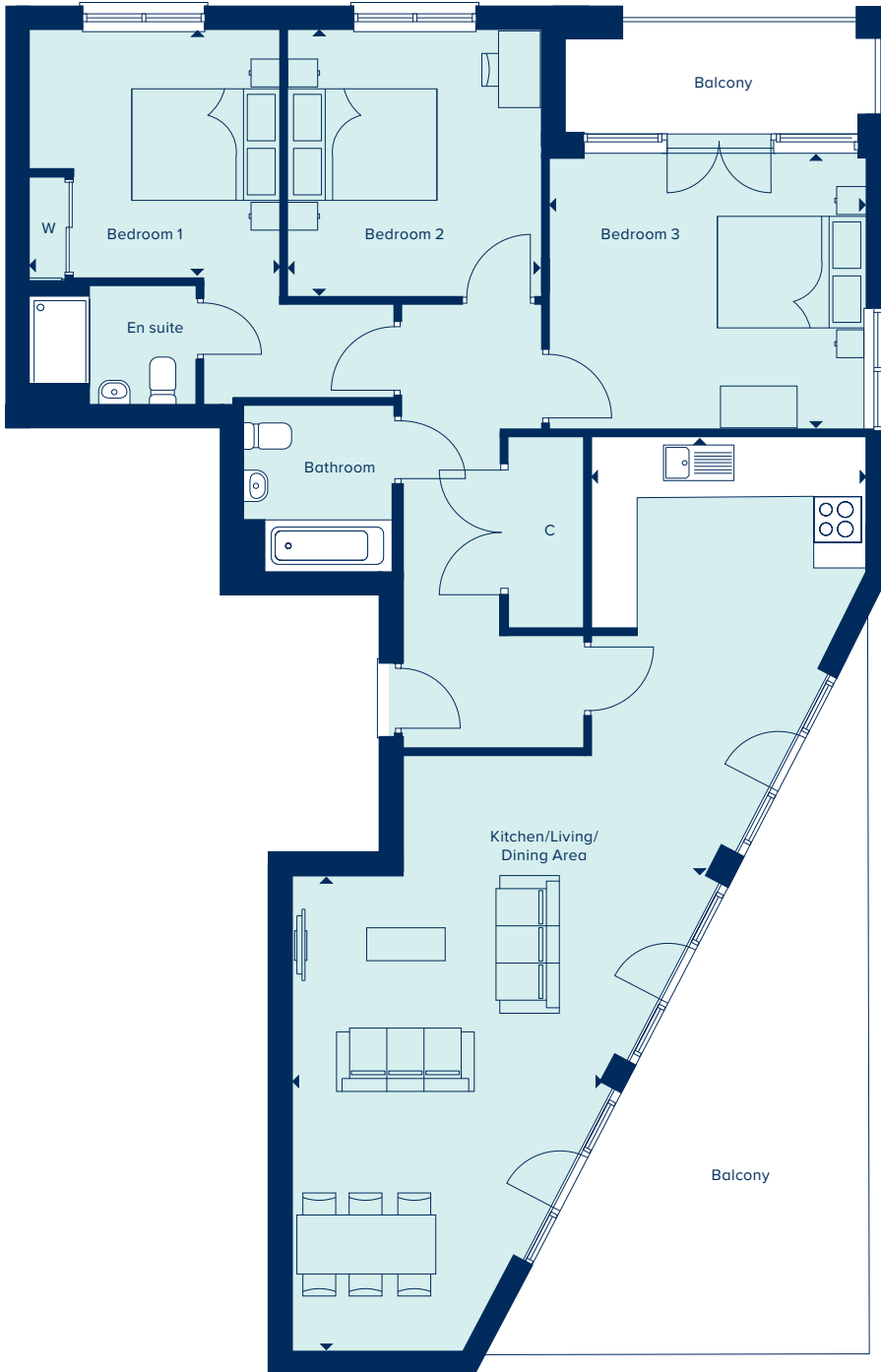
**CREST
NICHOLSON**

SOMERS HOUSE

3 Bedroom Home

Total Area: 1,223 sq ft

crestnicholson.com



KITCHEN/LIVING/DINING AREA

6.42m x 3.62m 21'0" x 11'10"

BEDROOM 1

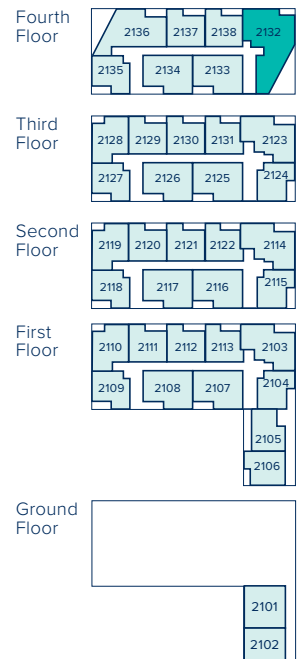
3.36m x 3.30m 11'0" x 10'9"

BEDROOM 2

3.53m x 3.35m 11'6" x 10'11"

BEDROOM 3

4.21m x 3.65m 13'9" x 11'7"



C Cupboard W Wardrobe • Max Dimension

All images are used for illustrative purposes only and are not necessarily a precise representation. Images may be of a slightly different model of home and may include different specifications for example in respect of brick colour and options which involve additional cost. Individual features such as window, brick, carpets, paint and other material colours may vary and the specification of fittings may vary. Any furnishings and furniture are not included in any sale. Please check with our sales representatives for details of the exact specifications available at the development for each type of home. STU9061/February 2021.





CREST
NICHOLSON

WALTON COURT GARDENS

SOMERS HOUSE APARTMENT TYPE PP HOMES 2136

A wonderfully designed 2 bedroom apartment, with a large kitchen/living/dining area with an expansive balcony, and bedroom 1 benefiting from an en suite and balcony.

2 BEDROOM HOME





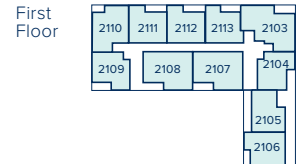
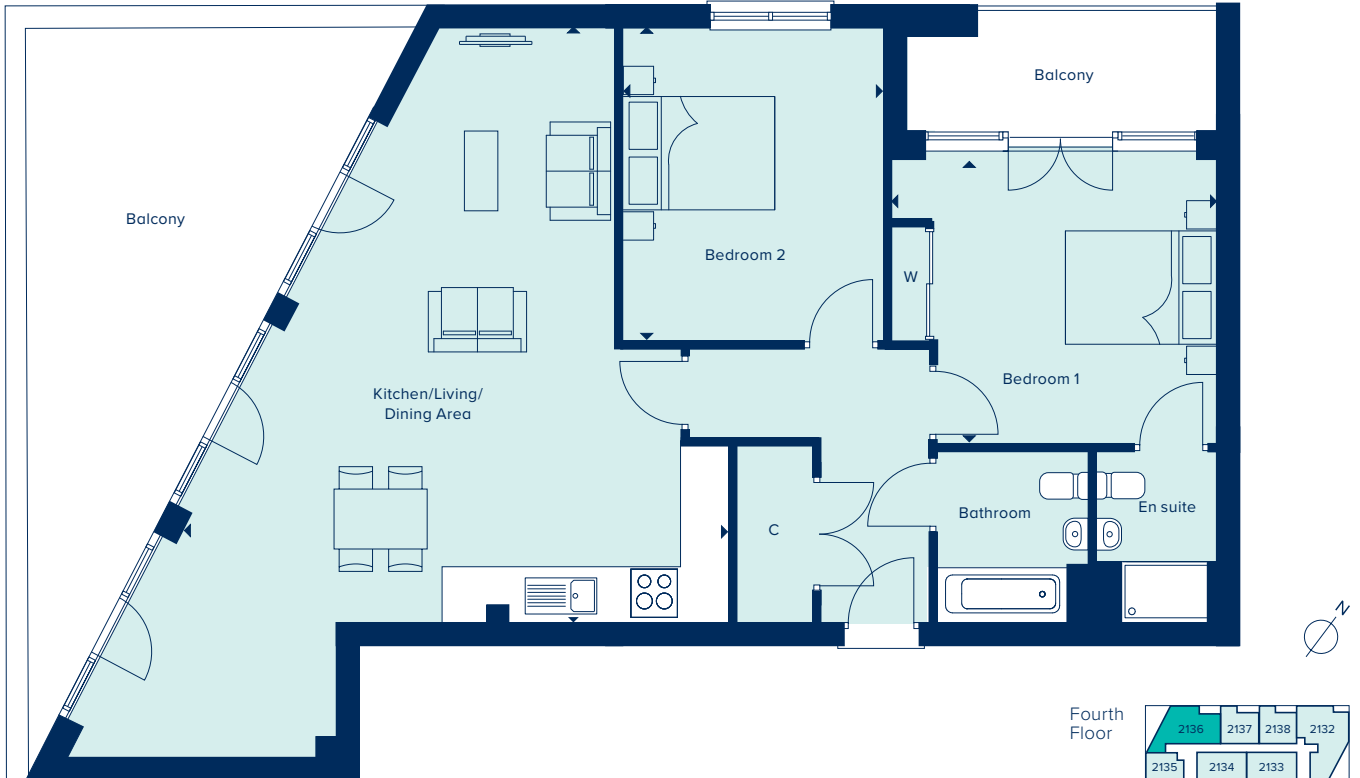
**CREST
NICHOLSON**

SOMERS HOUSE

2 Bedroom Home

Total Area: 1012 sq ft

crestnicholson.com



KITCHEN/LIVING/DINING AREA		
7.80m x 7.20m	25'7" x 23'7"	
BEDROOM 1		
4.31m x 3.77m	14'1" x 12'4"	
BEDROOM 2		
4.08m x 3.39m	13'4" x 11'1"	

C Cupboard W Wardrobe • Max Dimension

All images are used for illustrative purposes only and are not necessarily a precise representation. Images may be of a slightly different model of home and may include different specifications for example in respect of brick colour and options which involve additional cost. Individual features such as window, brick, carpets, paint and other material colours may vary and the specification of fittings may vary. Any furnishings and furniture are not included in any sale. Please check with our sales representatives for details of the exact specifications available at the development for each type of home. STU9061/February 2021.





CREST
NICHOLSON

WALTON COURT GARDENS

CARVER HOUSE APARTMENT TYPE BB HOMES 3110, 3119, 3128

A beautiful 1 bedroom apartment, with plenty of space in the bedroom, a good-sized bathroom and a spacious, open plan kitchen/living/dining area with a welcoming balcony.

1 BEDROOM HOME





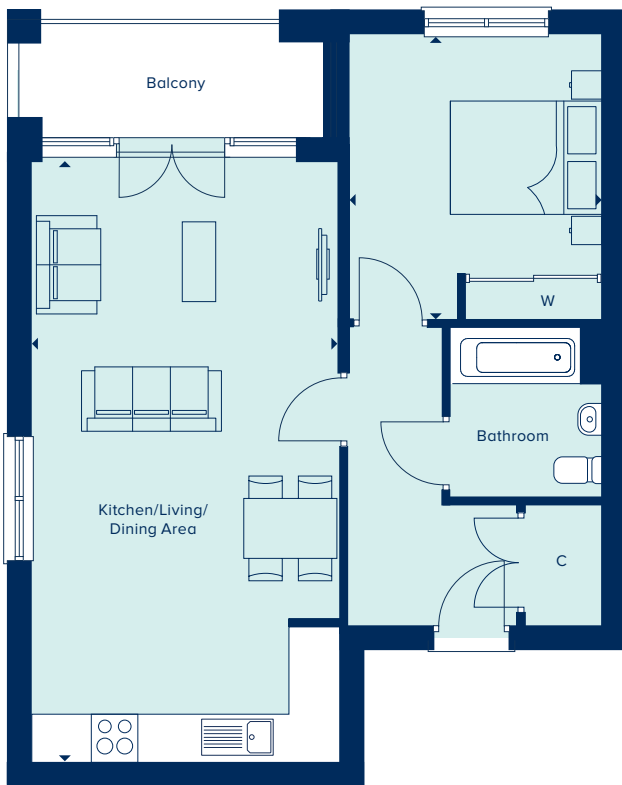
**CREST
NICHOLSON**

CARVER HOUSE

1 Bedroom Home

Total Area: 633 sq ft

crestnicholson.com

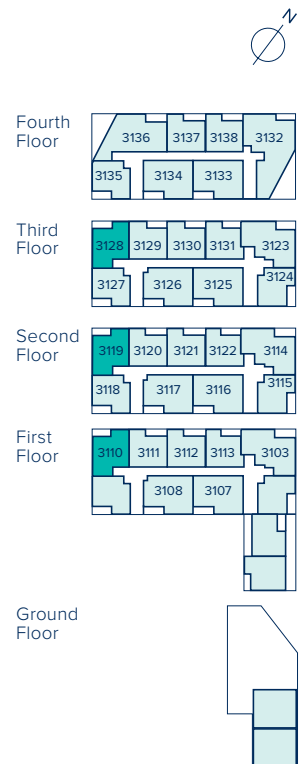


KITCHEN/LIVING/DINING AREA

7.92m x 4.00m 25'11" x 13'1"

BEDROOM 1

3.73m x 3.33m 12'2" x 10'11"



C Cupboard W Wardrobe • Max Dimension

All images are used for illustrative purposes only and are not necessarily a precise representation. Images may be of a slightly different model of home and may include different specifications for example in respect of brick colour and options which involve additional cost. Individual features such as window, brick, carpets, paint and other material colours may vary and the specification of fittings may vary. Any furnishings and furniture are not included in any sale. Please check with our sales representatives for details of the exact specifications available at the development for each type of home. STU8826/November 2020.





CREST
NICHOLSON

WALTON COURT GARDENS

CARVER HOUSE

APARTMENT TYPE CC

HOMES 3111, 3112, 3120, 3121, 3129, 3130, 3137

A beautiful 1 bedroom apartment, with plenty of space in the bedroom, a good-sized bathroom and a spacious, open plan kitchen/living/dining area with a welcoming balcony.

1 BEDROOM HOME





**CREST
NICHOLSON**

CARVER HOUSE

1 Bedroom Home

Total Area: 573 sq ft

crestnicholson.com



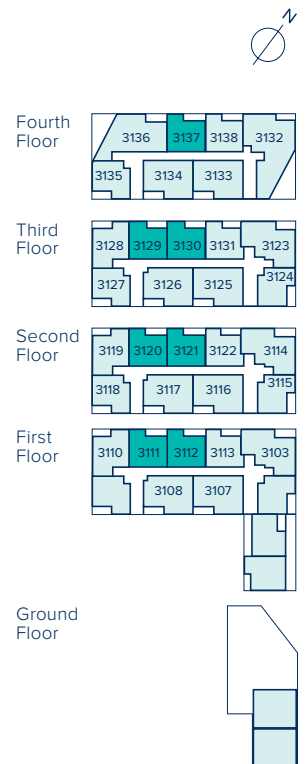
KITCHEN/LIVING/DINING AREA

6.11m x 4.30m 20'0" x 14'1"

BEDROOM 1

3.73m x 3.38m 12'2" x 11'1"

C Cupboard W Wardrobe • Max Dimension



All images are used for illustrative purposes only and are not necessarily a precise representation. Images may be of a slightly different model of home and may include different specifications for example in respect of brick colour and options which involve additional cost. Individual features such as window, brick, carpets, paint and other material colours may vary and the specification of fittings may vary. Any furnishings and furniture are not included in any sale. Please check with our sales representatives for details of the exact specifications available at the development for each type of home. STU8826/November 2020.





CREST
NICHOLSON

WALTON COURT GARDENS

CARVER HOUSE APARTMENT TYPE DD HOMES 3113, 3122, 3131, 3138

A beautiful 1 bedroom apartment, with plenty of space in the bedroom, a good-sized bathroom and a spacious, open plan kitchen/living/dining area with a welcoming balcony.

1 BEDROOM HOME





**CREST
NICHOLSON**

CARVER HOUSE

1 Bedroom Home

Total Area: 559 sq ft

crestnicholson.com

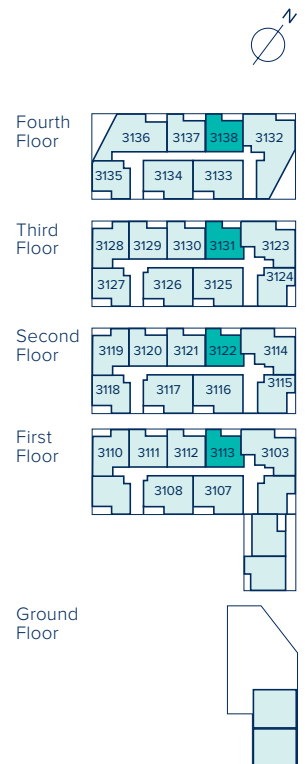


KITCHEN/LIVING/DINING AREA

6.11m x 3.97m 20'0" x 13'0"

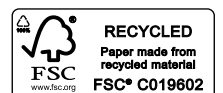
BEDROOM 1

3.73m x 3.22m 12'2" x 10'6"



C Cupboard W Wardrobe • Max Dimension

All images are used for illustrative purposes only and are not necessarily a precise representation. Images may be of a slightly different model of home and may include different specifications for example in respect of brick colour and options which involve additional cost. Individual features such as window, brick, carpets, paint and other material colours may vary and the specification of fittings may vary. Any furnishings and furniture are not included in any sale. Please check with our sales representatives for details of the exact specifications available at the development for each type of home. STU8826/November 2020.





CREST
NICHOLSON

WALTON COURT GARDENS

CARVER HOUSE APARTMENT TYPE EE HOMES 3103, 3114, 3123

This carefully designed 2 bedroom apartment is where you can enjoy a spacious, open plan kitchen/living/dining area, a good-sized balcony and a relaxing bathroom.

2 BEDROOM HOME





**CREST
NICHOLSON**

CARVER HOUSE

2 Bedroom Home

Total Area: 847 sq ft

crestnicholson.com



KITCHEN/LIVING/DINING AREA

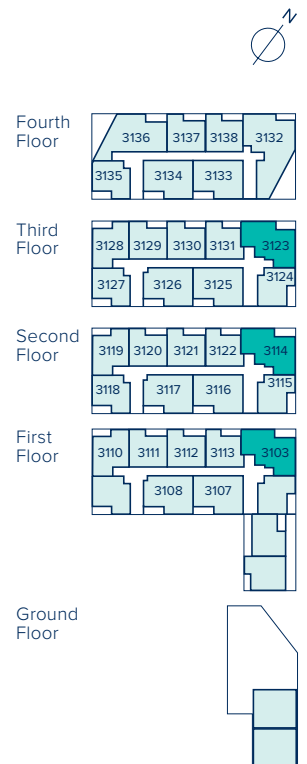
7.92m x 3.61m 25'11" x 11'10"

BEDROOM 1

3.36m x 3.30m 11'0" x 10'9"

BEDROOM 2

3.53m x 3.35m 11'7" x 10'11"



C Cupboard W Wardrobe • Max Dimension

All images are used for illustrative purposes only and are not necessarily a precise representation. Images may be of a slightly different model of home and may include different specifications for example in respect of brick colour and options which involve additional cost. Individual features such as window, brick, carpets, paint and other material colours may vary and the specification of fittings may vary. Any furnishings and furniture are not included in any sale. Please check with our sales representatives for details of the exact specifications available at the development for each type of home. STU8826/November 2020.





CREST
NICHOLSON

WALTON COURT GARDENS

CARVER HOUSE APARTMENT TYPE FF HOMES 3118, 3127

A beautiful 1 bedroom apartment, with plenty of space in the bedroom, a good-sized bathroom and a spacious, open plan kitchen/living/dining area with a welcoming balcony.

1 BEDROOM HOME





**CREST
NICHOLSON**

CARVER HOUSE

1 Bedroom Home

Total Area: 547 sq ft

crestnicholson.com

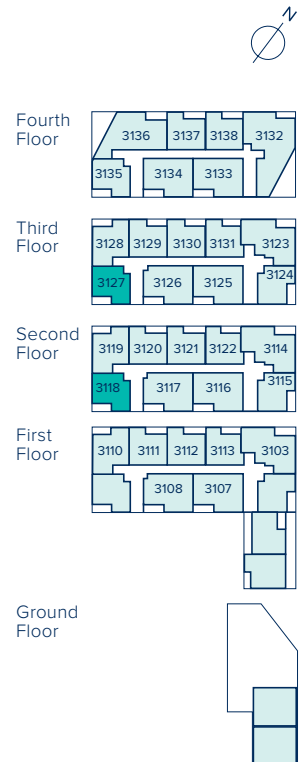


KITCHEN/LIVING/DINING AREA

6.11m x 4.01m 20'0" x 13'1"

BEDROOM 1

3.84m x 3.51m 12'7" x 11'6"



C Cupboard W Wardrobe • Max Dimension

All images are used for illustrative purposes only and are not necessarily a precise representation. Images may be of a slightly different model of home and may include different specifications for example in respect of brick colour and options which involve additional cost. Individual features such as window, brick, carpets, paint and other material colours may vary and the specification of fittings may vary. Any furnishings and furniture are not included in any sale. Please check with our sales representatives for details of the exact specifications available at the development for each type of home. STU8826/November 2020.





CREST
NICHOLSON

WALTON COURT GARDENS

CARVER HOUSE APARTMENT TYPE FF(A) HOME 3135

A beautiful 1 bedroom apartment, with plenty of space in the bedroom, a good-sized bathroom and a spacious, open plan kitchen/living/dining area with a welcoming balcony.

1 BEDROOM HOME





**CREST
NICHOLSON**

CARVER HOUSE

1 Bedroom Home

Total Area: 546 sq ft

crestnicholson.com

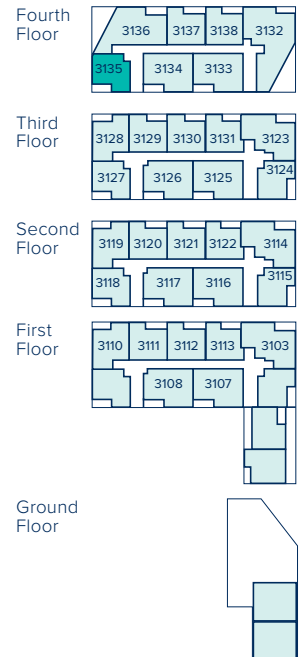


KITCHEN/LIVING/DINING AREA

6.11m x 4.01m 20'0" x 13'1"

BEDROOM 1

3.84m x 3.51m 12'7" x 11'6"



C Cupboard W Wardrobe • Max Dimension

All images are used for illustrative purposes only and are not necessarily a precise representation. Images may be of a slightly different model of home and may include different specifications for example in respect of brick colour and options which involve additional cost. Individual features such as window, brick, carpets, paint and other material colours may vary and the specification of fittings may vary. Any furnishings and furniture are not included in any sale. Please check with our sales representatives for details of the exact specifications available at the development for each type of home. STU8826/November 2020.





CREST
NICHOLSON

WALTON COURT GARDENS

CARVER HOUSE APARTMENT TYPE GG HOMES 3107, 3108, 3116, 3117, 3125, 3126, 3133, 3134

This carefully designed 2 bedroom apartment is where you can enjoy a spacious, open plan kitchen/living/dining area, a good-sized balcony and a relaxing bathroom.

2 BEDROOM HOME





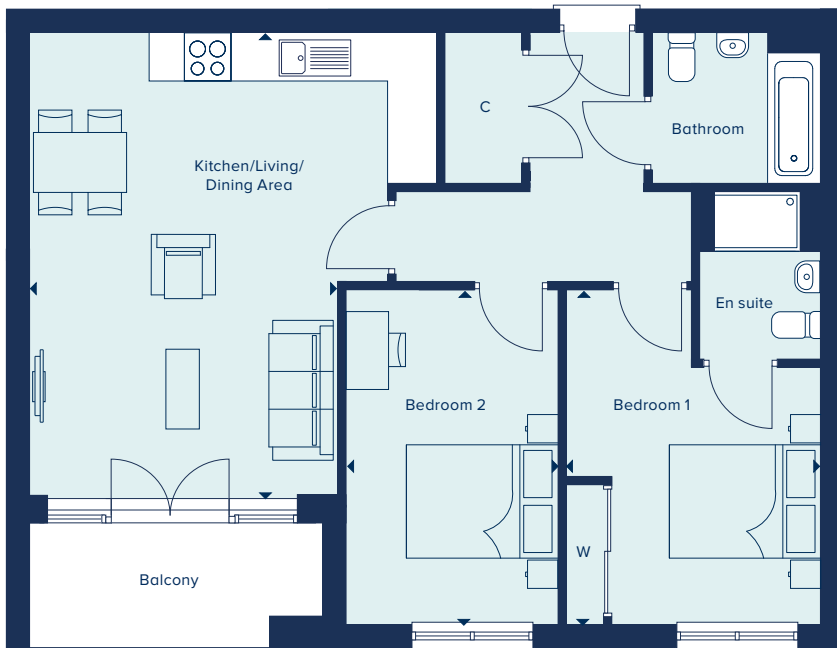
**CREST
NICHOLSON**

CARVER HOUSE

2 Bedroom Home

Total Area: 802 sq ft

crestnicholson.com



KITCHEN/LIVING/DINING AREA

6.11m x 4.08m 20'0" x 13'4"

BEDROOM 1

4.36m x 3.36m 14'3" x 11'0"

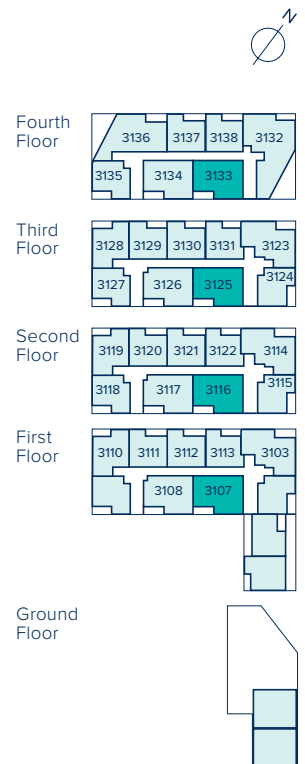
BEDROOM 2

4.36m x 2.75m 14'3" x 9'0"

* Total area may vary slightly on selected plots

C Cupboard W Wardrobe • Max Dimension

All images are used for illustrative purposes only and are not necessarily a precise representation. Images may be of a slightly different model of home and may include different specifications for example in respect of brick colour and options which involve additional cost. Individual features such as window, brick, carpets, paint and other material colours may vary and the specification of fittings may vary. Any furnishings and furniture are not included in any sale. Please check with our sales representatives for details of the exact specifications available at the development for each type of home. STU8826/November 2020.





**CREST
NICHOLSON**

WALTON COURT GARDENS

CARVER HOUSE APARTMENT TYPE HH HOMES 3115, 3124

This thoughtfully considered 1 bedroom apartment offers a spacious balcony from the light and airy open plan kitchen/living/dining area, as well as a good-sized bathroom.

1 BEDROOM HOME





**CREST
NICHOLSON**

CARVER HOUSE

1 Bedroom Home

Total Area: 539 sq ft

crestnicholson.com

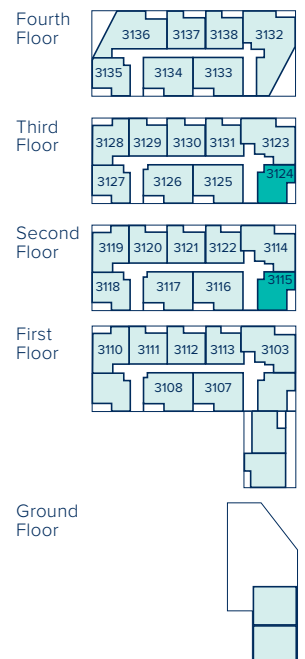


KITCHEN/LIVING/DINING AREA

5.86m x 4.13m 19'2" x 13'6"

BEDROOM 1

3.53m x 3.25m 11'6" x 10'7"



C Cupboard W Wardrobe • Max Dimension

All images are used for illustrative purposes only and are not necessarily a precise representation. Images may be of a slightly different model of home and may include different specifications for example in respect of brick colour and options which involve additional cost. Individual features such as window, brick, carpets, paint and other material colours may vary and the specification of fittings may vary. Any furnishings and furniture are not included in any sale. Please check with our sales representatives for details of the exact specifications available at the development for each type of home. STU8826/November 2020.





CREST
NICHOLSON

WALTON COURT GARDENS

CARVER HOUSE APARTMENT TYPE OO HOME 3132

Offering 3 good-sized bedrooms, there is an en suite and balcony to bedroom 1 and a large balcony to the spacious, open plan kitchen/living/dining area.

3 BEDROOM HOME





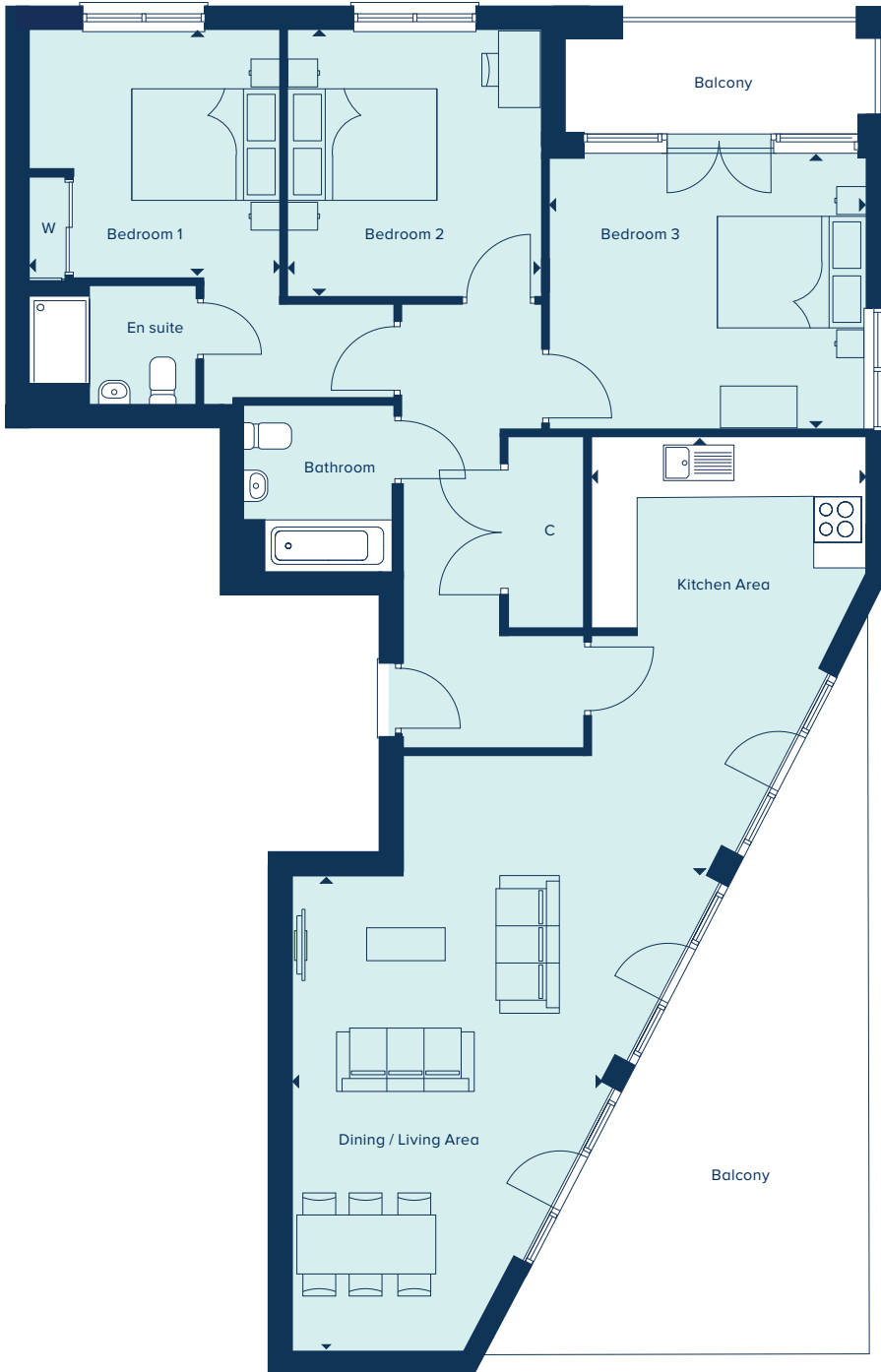
**CREST
NICHOLSON**

CARVER HOUSE

3 Bedroom Home

Total Area: 1,223 sq ft

crestnicholson.com



KITCHEN AREA

5.84m x 3.62m 19'1" x 11'10"

DINING/LIVING AREA

6.42m x 4.13m 21'0" x 13'6"

BEDROOM 1

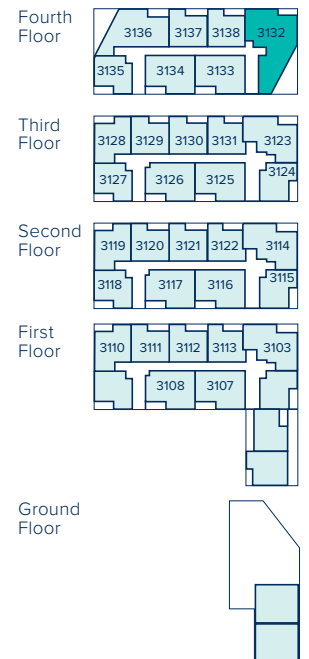
3.36m x 3.30m 11'0" x 10'9"

BEDROOM 2

3.53m x 3.35m 11'6" x 10'11"

BEDROOM 3

4.21m x 3.65m 13'9" x 11'7"



C Cupboard W Wardrobe • Max Dimension

All images are used for illustrative purposes only and are not necessarily a precise representation. Images may be of a slightly different model of home and may include different specifications for example in respect of brick colour and options which involve additional cost. Individual features such as window, brick, carpets, paint and other material colours may vary and the specification of fittings may vary. Any furnishings and furniture are not included in any sale. Please check with our sales representatives for details of the exact specifications available at the development for each type of home. STU8826/November 2020.





CREST
NICHOLSON

WALTON COURT GARDENS

CARVER HOUSE APARTMENT TYPE PP HOME 3136

A wonderfully designed 2 bedroom apartment, with a large kitchen/living/dining area with an expansive balcony, and bedroom 1 benefiting from an en suite and balcony.

2 BEDROOM HOME





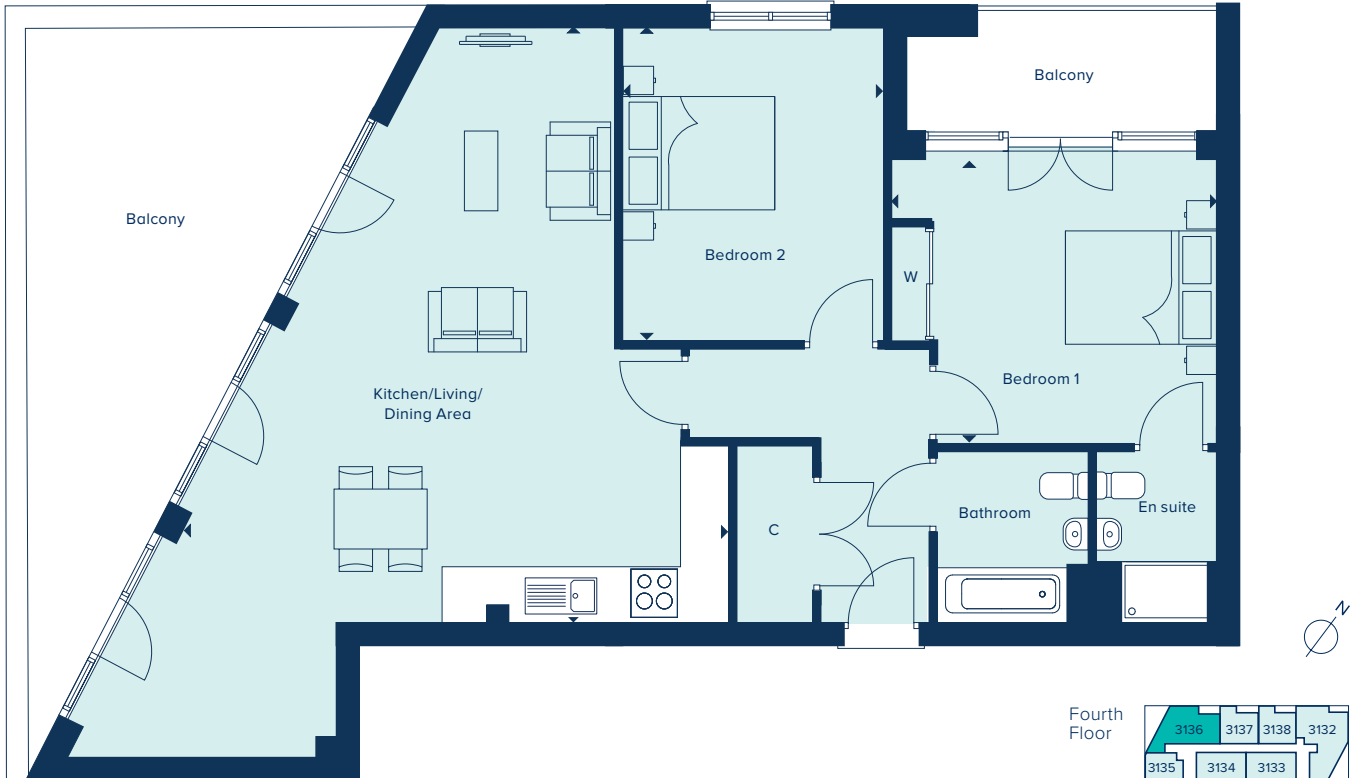
**CREST
NICHOLSON**

CARVER HOUSE

2 Bedroom Home

Total Area: 1012 sq ft

crestnicholson.com



KITCHEN/LIVING/DINING AREA		
7.80m x 7.20m	25'7" x 23'7"	
BEDROOM 1		
4.31m x 3.77m	14'1" x 12'4"	
BEDROOM 2		
4.08m x 3.39m	13'4" x 11'1"	

C Cupboard W Wardrobe • Max Dimension

All images are used for illustrative purposes only and are not necessarily a precise representation. Images may be of a slightly different model of home and may include different specifications for example in respect of brick colour and options which involve additional cost. Individual features such as window, brick, carpets, paint and other material colours may vary and the specification of fittings may vary. Any furnishings and furniture are not included in any sale. Please check with our sales representatives for details of the exact specifications available at the development for each type of home. STU8826/November 2020.

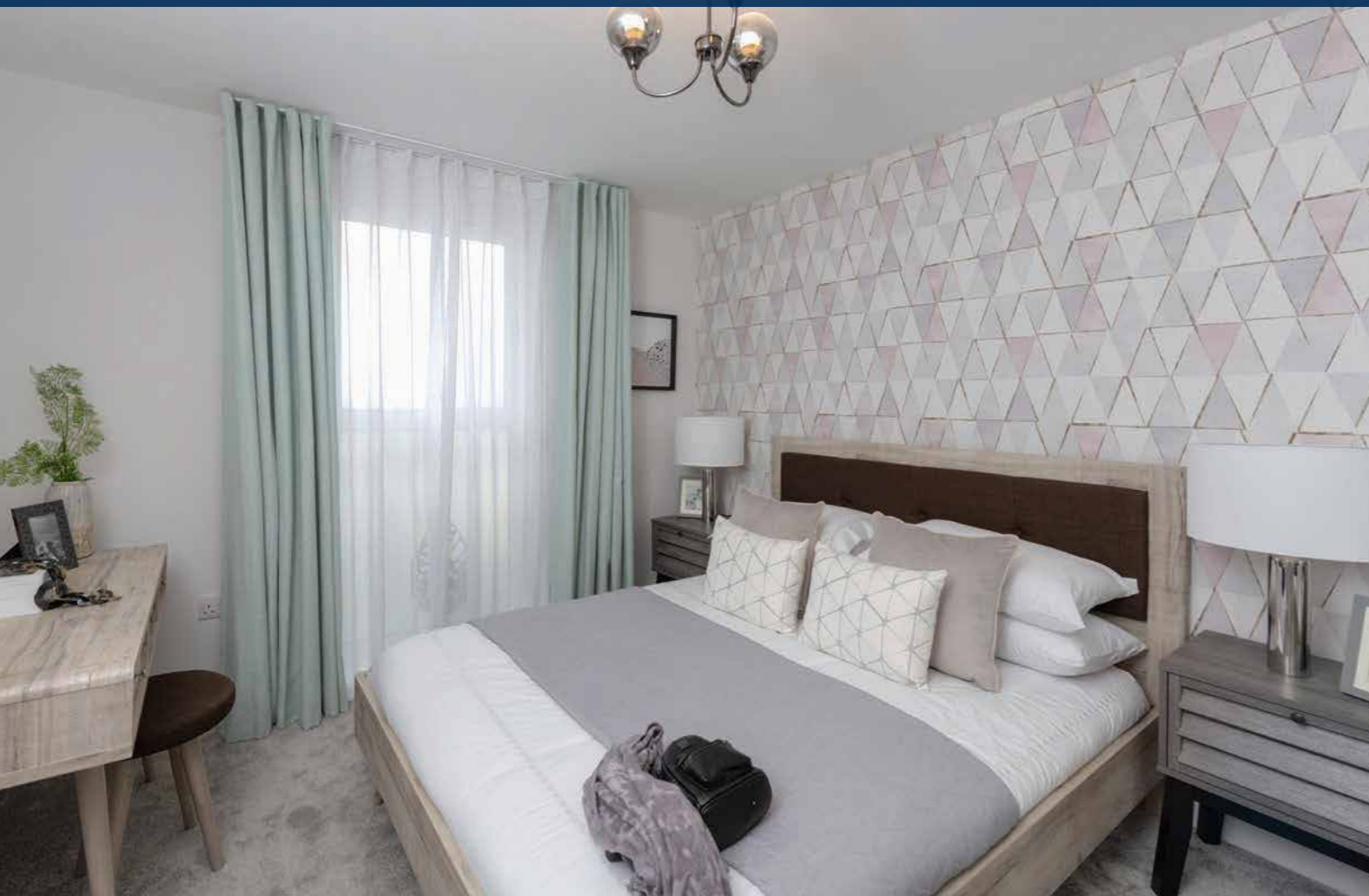




WALTON COURT GARDENS SPECIFICATION

With beautiful, clean finishes and modern integrated appliances included, your new home has a thoughtfully considered specification throughout.

1, 2 & 3 BEDROOM APARTMENTS AND 3 BEDROOM TOWNHOUSES



WALTON COURT GARDENS

	3 bedroom townhouses	1, 2 & 3 bedroom apartments
KITCHEN		
Choice of soft close fitted kitchen complete with laminate work surface and upstand (subject to stage of construction)	•	•
Electric single built-in oven in stainless steel	•	•
Electric built-under 1½ oven in stainless steel	•	•
4 ring gas hob in stainless steel	•	
4 ring ceramic electric hob in stainless steel		•
Stainless steel splashback behind hob	•	•
Integrated extractor hood	•	•
A-rated integrated fridge/freezer	•	•
A-rated freestanding washing machine in hall cupboard		•
A-rated integrated washing machine*	•	
Single bowl sink and drainer in stainless steel	•	•
Single lever chrome mixer tap	•	•
BATHROOM, EN SUITE & CLOAKROOM		
Contemporary white sanitaryware	•	•
Chrome mixer taps and shower fittings	•	•
Full height tiling around bath with shower and folding bath screen (where there is no separate shower facility in the home)	•	•
Half height tiling around bath (where a separate shower facility is provided in the home)	•	•
Full height tiling to enclosed shower area where applicable	•	•
Half height tiling to walls where other sanitaryware is fitted in bathroom and en suite	•	•
Heated white towel rail to bathrooms and en suites	•	•
Tiled splashback to basin in cloakroom	•	



*Integrated washing machine included if there is no utility room.

SPECIFICATION

	3 bedroom townhouses	1, 2 & 3 bedroom apartments
ELECTRICAL		
Low energy LED 4-light spotlight bar to kitchen	•	•
Low energy LED downlighters in white to bathroom and en suite	•	•
Low energy lighting in all other areas	•	•
TV and data point to living room and TV point to master bedroom	•	•
DECORATION		
White emulsion to all rooms and ceilings	•	•
White gloss to window boards, internal doors, skirting and architraves	•	•
JOINERY AND DOORS		
Composite GRP front door with multipoint locking system and chrome ironmongery	•	
Timber entrance doors with multipoint locking system and chrome ironmongery		•
Windows with bronze finish externally and white internally with white ironmongery and patio doors with chrome ironmongery	•	•
White internal doors with chrome ironmongery	•	•
Fitted wardrobes to master bedroom with soft close sliding mirror fronted doors	•	•
HEATING		
Electric heaters and Megaflo Electric Hot Water Cylinder with twin immersions	•	•
EXTERNAL FINISHES		
Front gardens to be landscaped	•	
Rear gardens top soiled and rotovated	•	
External low energy security light fitted by front door	•	
External tap	•	
SECURITY AND PEACE OF MIND		
Smoke and heat detectors	•	•
Two years warranty and aftercare	•	•
Complete NHBC ten year warranty	•	•



WALTON COURT GARDENS

Station Avenue, Walton-on-Thames,
Surrey KT12 1FJ

For all enquiries please call

01932 282 185

crestnicholson.com/waltoncourtgardens



Please note, the digital illustrations may not accurately depict elevation materials, gradients, landscaping or street furniture. Whilst every reasonable effort has been made to ensure that the information contained in this brochure is correct, it is designed specifically as a guide only and Crest Nicholson reserves the right to amend the specification as necessary and without notice at its absolute discretion. This brochure does not in any way constitute or form any part of a contract of sale transfer or lease. Please ask Sales Advisor for further details. CRS076/September 2020.