

# Building Great Places

## Development Update - Infrastructure, amenities and facilities at Westvale Park

We take pride in what we do and work hard to deliver developments our customers will enjoy living in.

As well as building high quality homes, our developments are designed to include the necessary infrastructure, useful amenities, leisure facilities and green open spaces.

The table below gives details of the works which are in progress and will be delivered at Westvale Park. The works are also shown on the plan below.

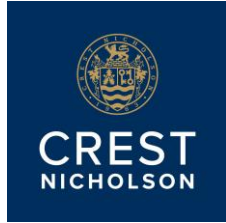
The timescales provided for completion of works are indicative and may be subject to change based on external market factors.

For information on progress of these works please check the Development website accessed via [www.crestnicholson.com](http://www.crestnicholson.com)

### Schedule of Remaining Works to Parcel

Plan Ref	Description	Remaining Works	Is a Third Party Responsible for Completing?	Forecast Date for Works Completion
1	Private road	<ul style="list-style-type: none"> <li>Construction of the road and footway.</li> </ul>	No	Q1 2024
2	Private road	<ul style="list-style-type: none"> <li>Construction of the road and footway.</li> </ul>	No	Q1 2024
3	Private road	<ul style="list-style-type: none"> <li>Construction of the road and footway.</li> </ul>	No	Q4 2023
4	Private road	<ul style="list-style-type: none"> <li>Construction of the road and footway.</li> </ul>	No	Q4 2023
5	Private road	<ul style="list-style-type: none"> <li>Complete final surfacing works to road and footways.</li> </ul>	No	Q1 2024
6	Parking court	<ul style="list-style-type: none"> <li>Construction of the parking court.</li> </ul>	No	Q3 2023
7	Equipped play area	<ul style="list-style-type: none"> <li>Seeding to be completed.</li> </ul>	No	Q3 2023
8	Public transport	<ul style="list-style-type: none"> <li>Construction of the bus stop.</li> </ul>	No	Q1 2024

**30<sup>th</sup> June 2023 – Updated Quarterly**



## **Building Great Places**

### **Development Update - Infrastructure, amenities and facilities at Westvale Park**

Notes:

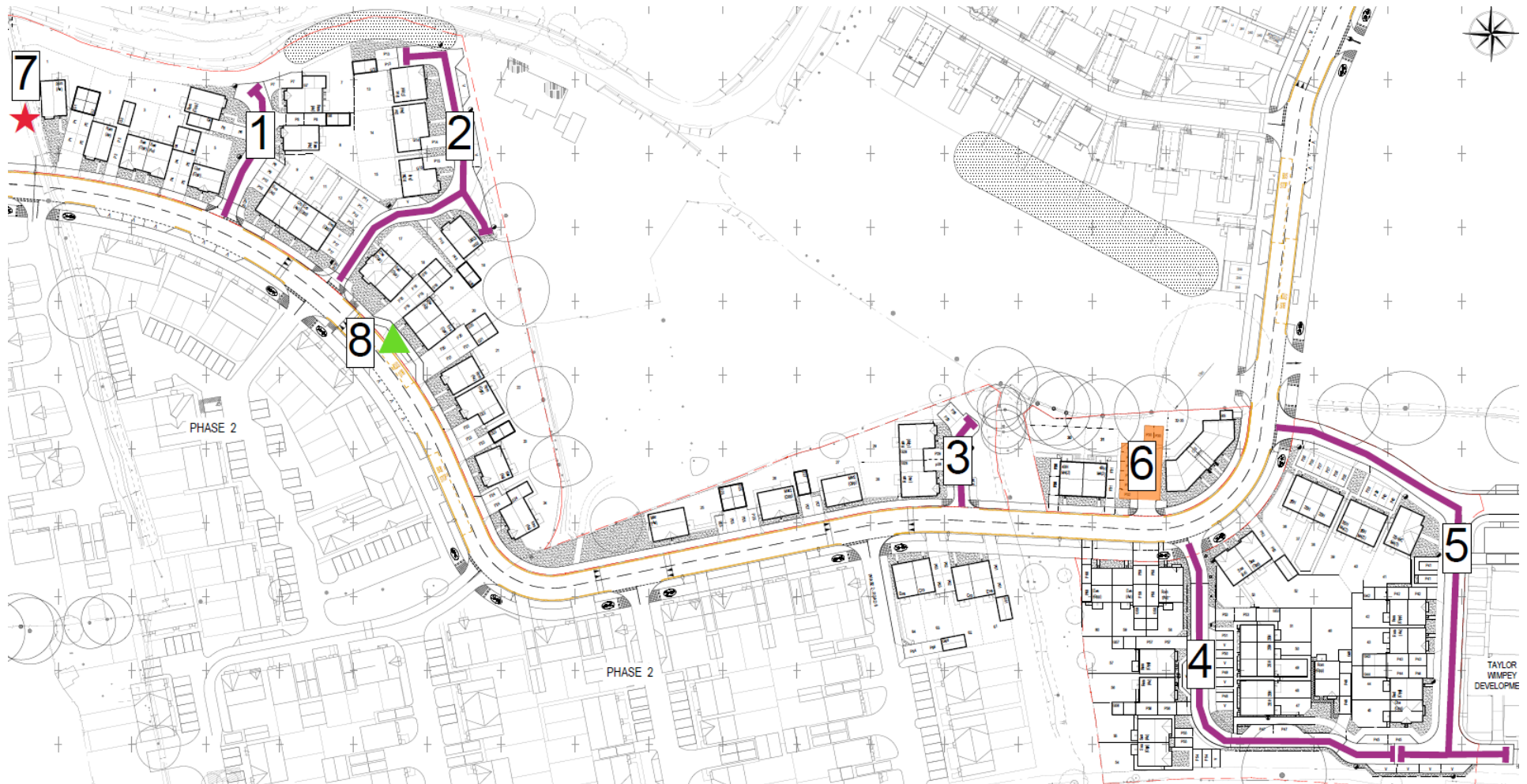
- The estate management company will also be responsible for maintaining small areas of incidental landscaping and shared drive accesses for a small number of properties. These items are not included on the above schedule due to their more limited nature and use, however they will be completed alongside the adjacent homes.



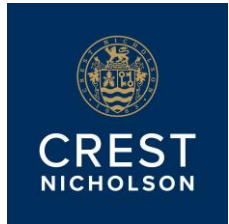
# Building Great Places

## Development Update - Infrastructure, amenities and facilities at Westvale Park

### Parcel Remaining Works Plan



30<sup>th</sup> June 2023 – Updated Quarterly



# Building Great Places

## Development Update - Infrastructure, amenities and facilities at Westvale Park

### Schedule of Remaining Works to Wider Estate

Plan Ref	Description	Remaining Works	Is a Third Party Responsible for Completing?	Forecast Date for Works Completion
1	Adoptable road	<ul style="list-style-type: none"> <li>Completion of road finishing works including parking bays.</li> </ul>	Consortium	Q4 2023
2	Adoptable road	<ul style="list-style-type: none"> <li>Complete final surfacing works to road and footways.</li> <li>Complete landscaping works.</li> </ul>	Consortium	Q1 2024
3	Access junction	<ul style="list-style-type: none"> <li>Remaining road finishing works including bollards.</li> <li>Access junction will open to coincide with completion of Westvale Park Phase 4.</li> </ul>	Consortium	Q3 2023
4	Equipped play area	<ul style="list-style-type: none"> <li>Seeding to be completed.</li> </ul>	No	Q3 2023
5	Community facilities	<ul style="list-style-type: none"> <li>Construction of the Neighbourhood Hall.</li> </ul>	Consortium	Q4 2024
6	Commercial	<ul style="list-style-type: none"> <li>Construction of commercial units to Neighbourhood Centre.</li> </ul>	Consortium	Q3 2025
7	Public transport	<ul style="list-style-type: none"> <li>Construction of the bus stop.</li> </ul>	No	Q1 2024

#### Notes:

- The 'Consortium' comprises Crest Nicholson, Taylor Wimpey and Persimmon. Where works are to be completed by the Consortium, all consortium members are jointly responsible.

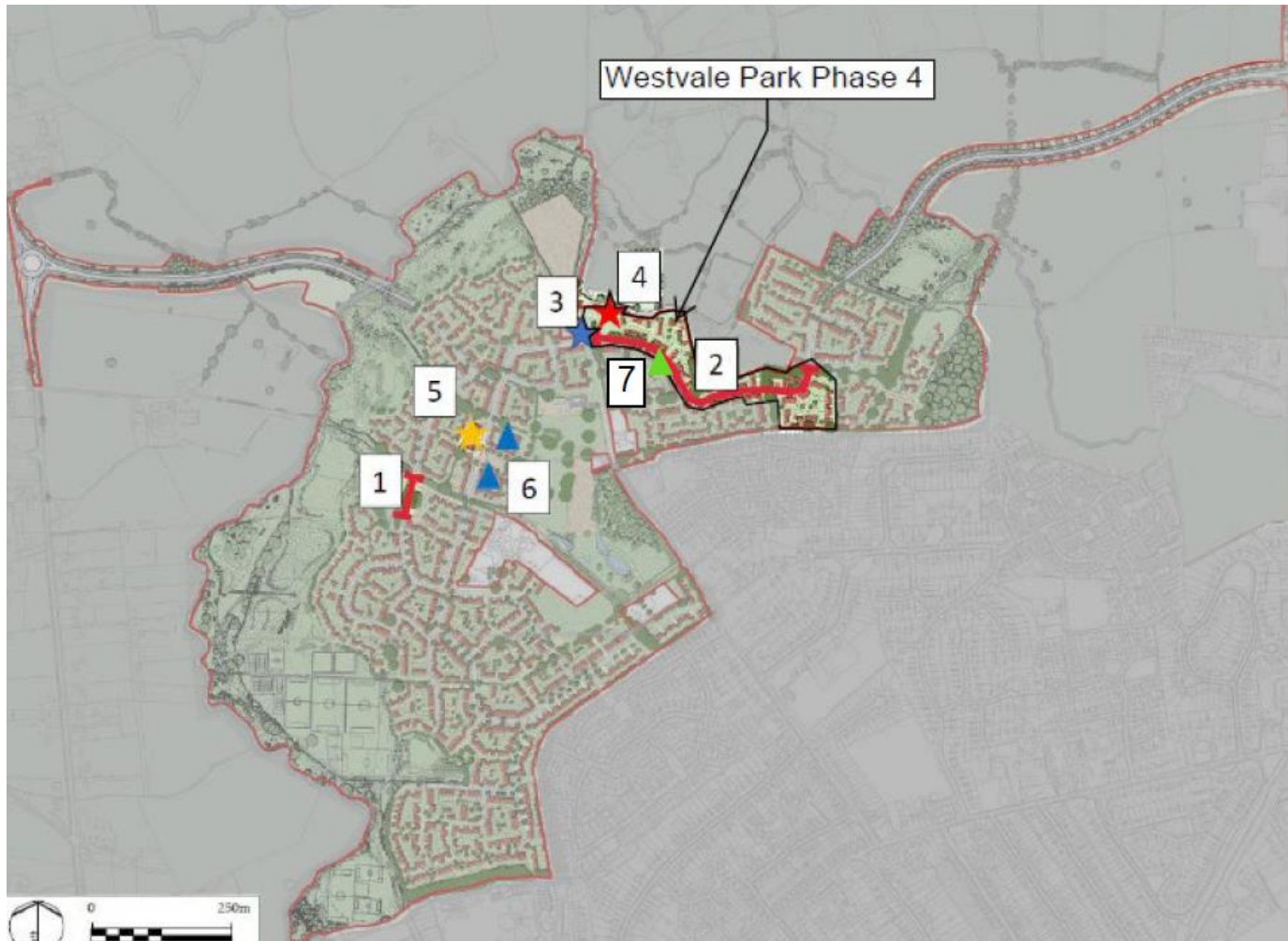
30<sup>th</sup> June 2023 – Updated Quarterly



# Building Great Places

## Development Update - Infrastructure, amenities and facilities at Westvale Park

### Wider Estate Remaining Works Plan



30<sup>th</sup> June 2023 – Updated Quarterly



## **Building Great Places**

### **Development Update - Infrastructure, amenities and facilities at Westvale Park**

#### **Managing Agents Contact Details**

Crest Nicholson has appointed Specialist Property Asset Management to undertake the estate management for the development. Should you wish to discuss any estate management matters please contact the following:

[propertymanagement@specialistpm.com](mailto:propertymanagement@specialistpm.com)

+44 121 725 3620

**30<sup>th</sup> June 2023 – Updated Quarterly**