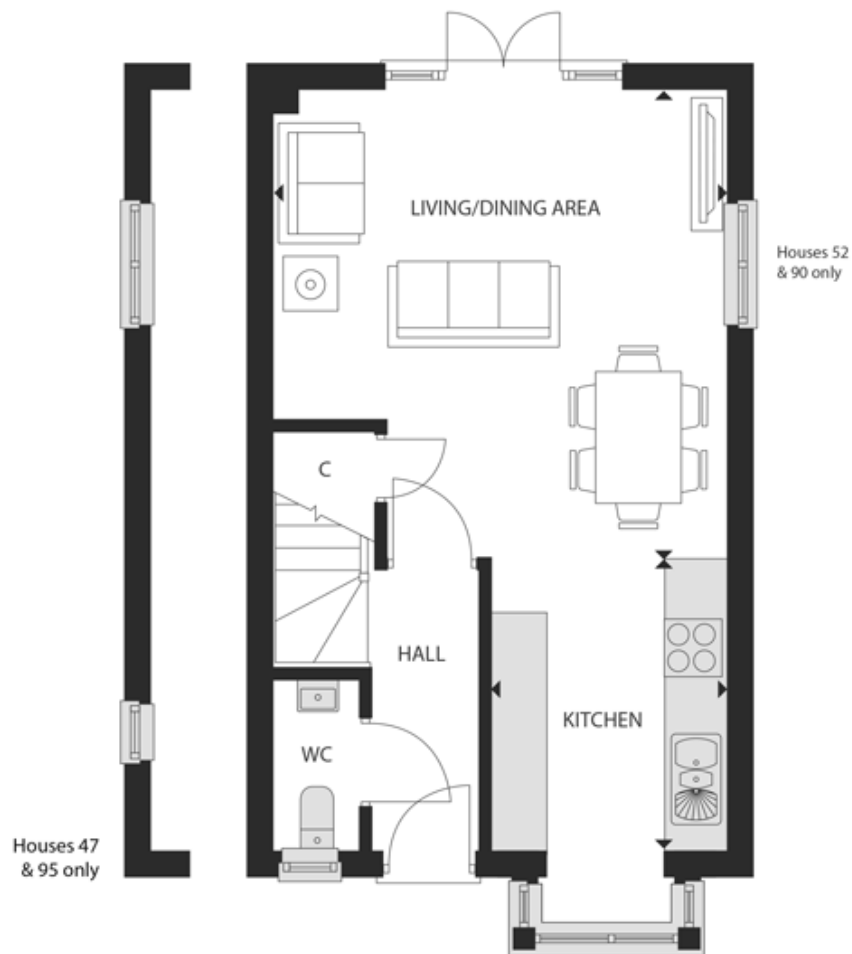


Floor plans

Ground Floor



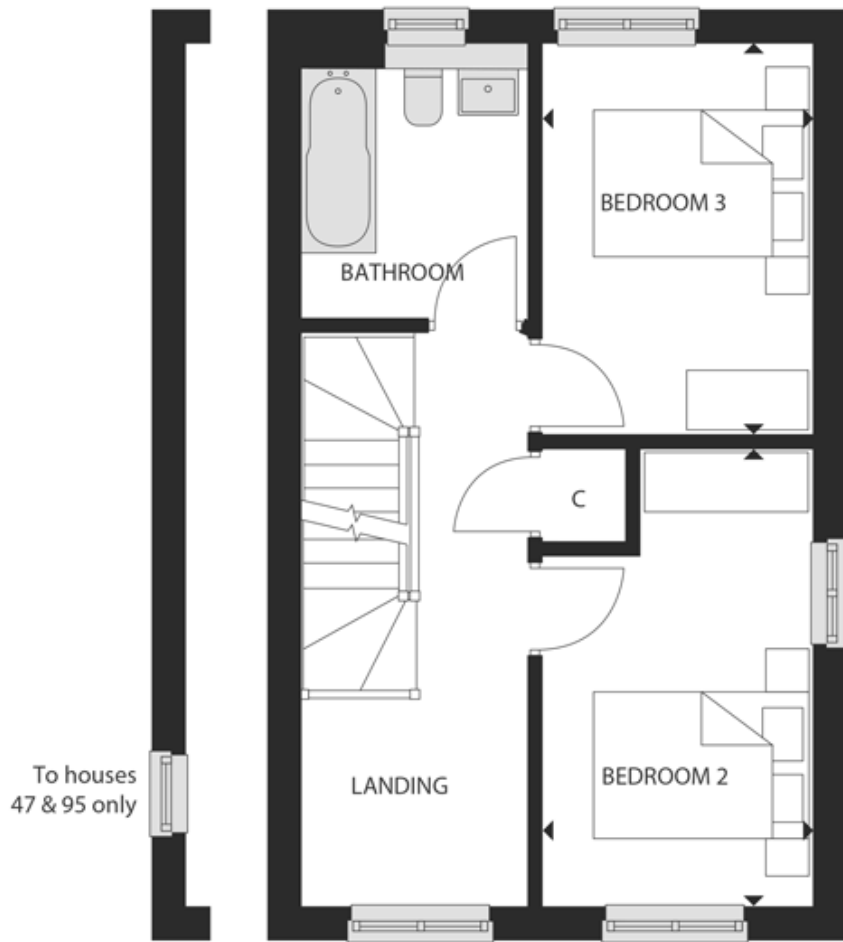
Kitchen:

2.49m x 3.07m (8' 02" x 10' 01")

Living/Dining Area:

4.72m x 4.93m (15' 06" x 16' 02")

First Floor



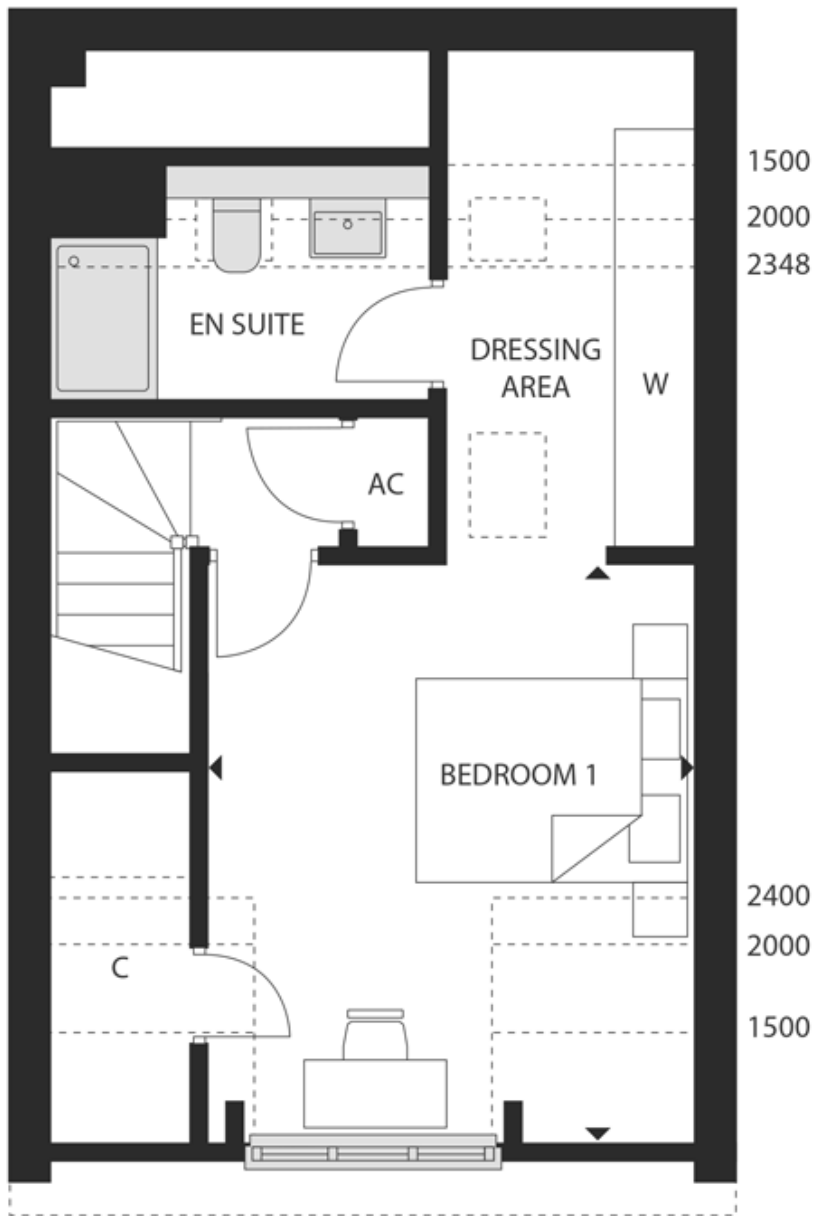
Bedroom 2:

2.51m x 4.24m (8' 03" x 13' 11")

Bedroom 3:

2.51m x 3.63m (8' 03" x 11' 11")

Second Floor



Bedroom 1:

4.22m x 3.58m (13' 10" x 11' 09")