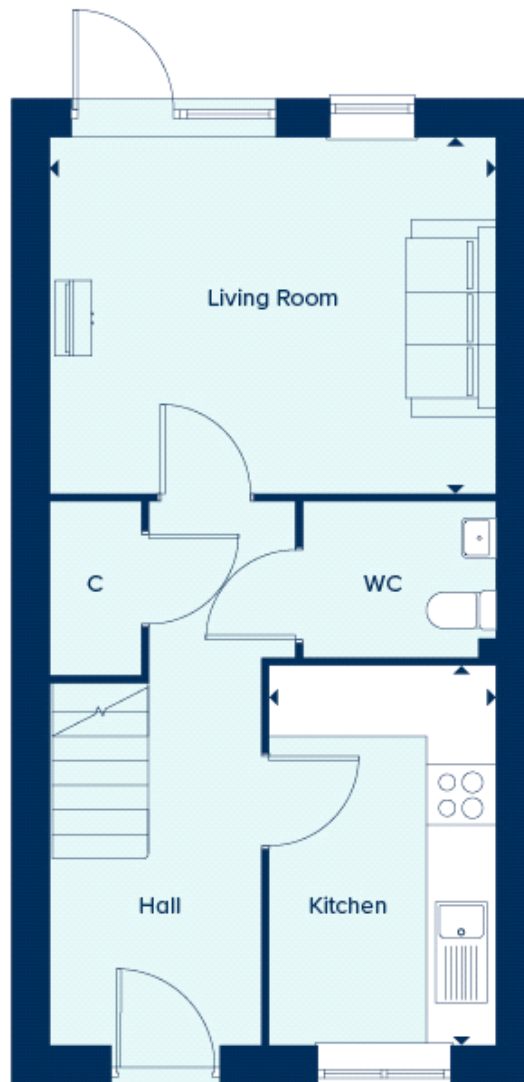


Floor plans

Ground Floor



Kitchen:

3.53m x 2.11m (11' 07" x 6' 11")

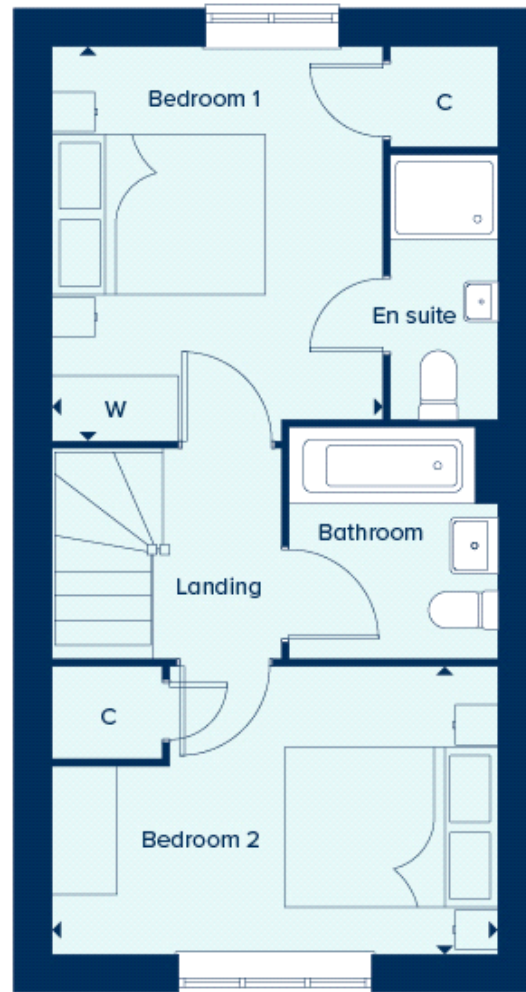
Living Room:

4.17m x 3.33m (13' 08" x 10' 11")

Key

Câ€Cupboardâ€C Wâ€Wardrobeâ€C Â·â€Max Dimension

First Floor



Bedroom 1:

3.68m x 3.07m (12' 01" x 10' 01")

Bedroom 2:

4.17m x 2.67m (13' 08" x 8' 09")

Key

Câ€Cupboardâ€ Wâ€Wardrobeâ€ Â·â€Max Dimension