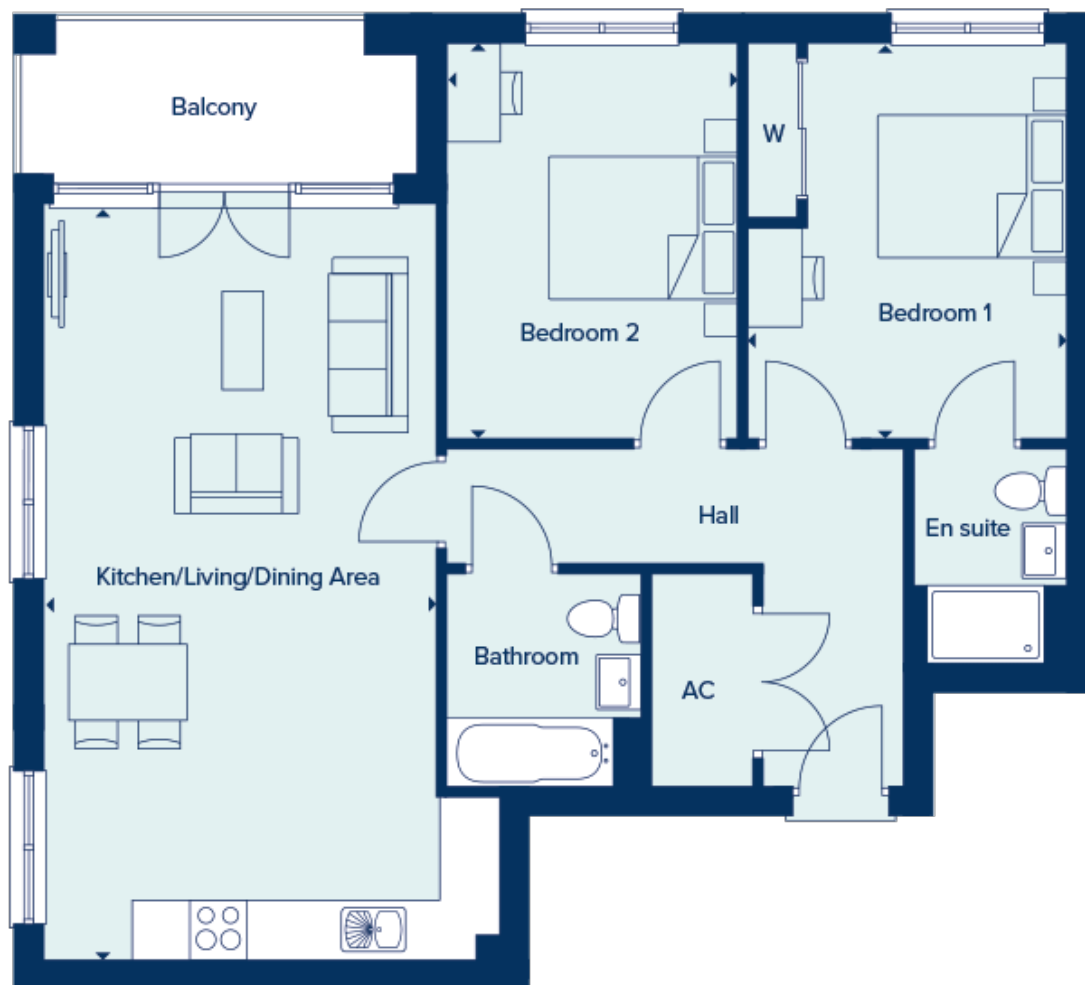


## Floor plans

### Floor Plan



**Kitchen/Living/Dining Room:**

7.92m x 4.11m (26' 00" x 13' 06")

**Bedroom 1 :**

4.11m x 3.35m (13' 06" x 11' 00")

**Bedroom 2:**

4.11m x 3.07m (13' 06" x 10' 01")