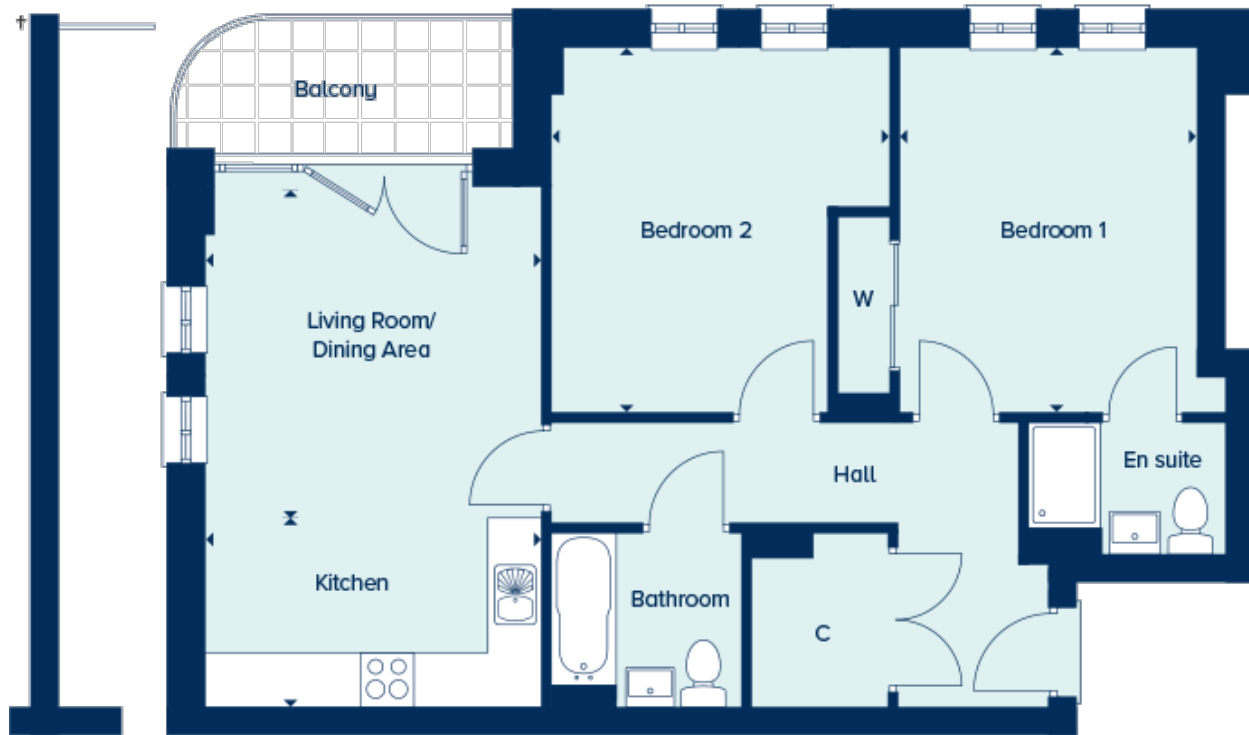


Floor plans

Floor Plan



*Party wall and balcony differ on plots 2004, 2009, 2014, 2019, 2025, 2030, 2035 & 2040.

Living/ Dining area:

3.78m x 3.71m (12' 05" x 12' 02")

Kitchen:

3.78m x 2.13m (12' 05" x 7' 00")

Bedroom 1:

4.11m x 3.38m (13' 06" x 11' 01")

Bedroom 2:

4.11m x 3.81m (13' 06" x 12' 06")