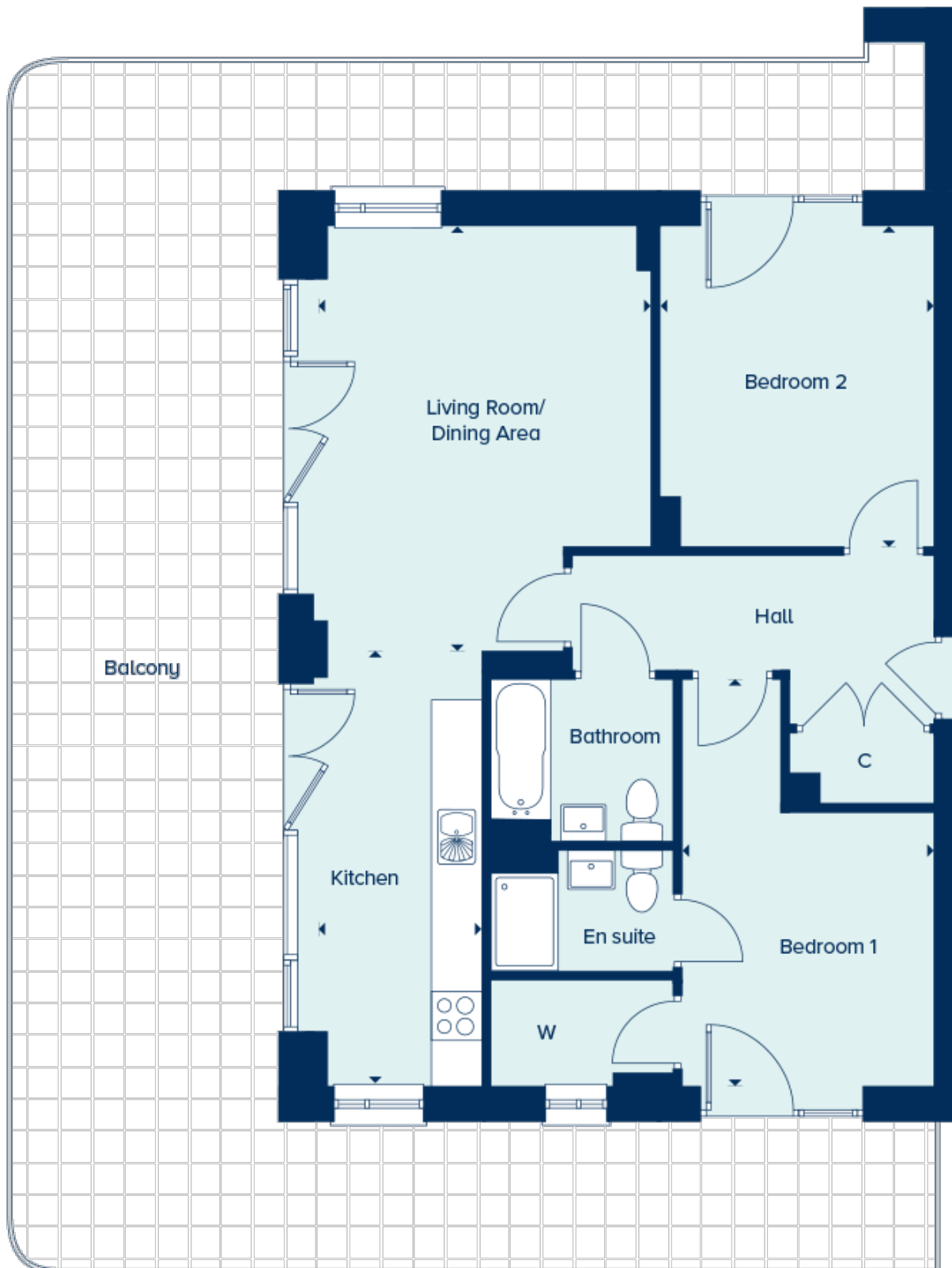


Floor plans

Floor Plan



Living/Dining area:

5.18m x 4.11m (17' 00" x 13' 06")

Kitchen:

5.31m x 2.03m (17' 05" x 6' 08")

Bedroom 1:

4.95m x 3.12m (16' 03" x 10' 03")

Bedroom 2:

3.91m x 3.38m (12' 10" x 11' 01")