

Floor plans

Ground Floor



GROUND FLOOR

Office 1:

6.45m x 2.67m (21' 02" x 8' 09")

Office 2:

3.40m x 2.67m (11' 02" x 8' 09")

Key

* Bay window to Plots 229, 232 and 239 only.

Plots 228, 233, 238 and 240 have alternative wall layouts,
speak to sales advisor for more information.

â€ Plots 228, 229 and 238 are handed.

First Floor



FIRST FLOOR

Living Room:

5.18m x 4.39m (17' 00" x 14' 05")

Kitchen/Dining Room:

5.18m x 4.22m (17' 00" x 13' 10")

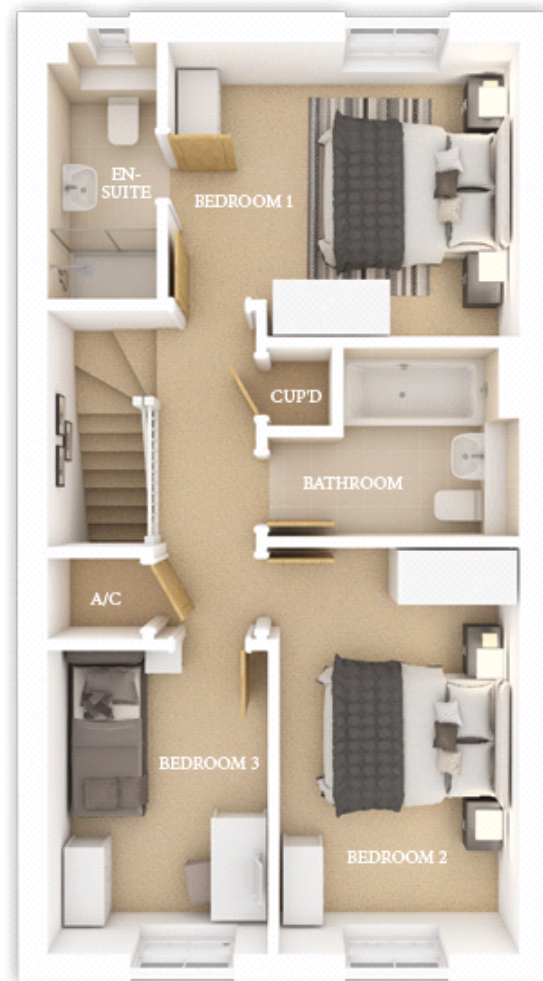
Key

* Bay window to Plots 229, 232 and 239 only.

Plots 228, 233, 238 and 240 have alternative wall layouts, speak to sales advisor for more information.

â€ Plots 228, 229 and 238 are handed.

Second Floor



SECOND FLOOR

Bedroom 1:

3.86m x 3.23m (12' 08" x 10' 07")

Bedroom 2:

4.45m x 2.64m (14' 07" x 8' 08")

Bedroom 3:

3.33m x 2.41m (10' 11" x 7' 11")

Key

* Bay window to Plots 229, 232 and 239 only.

Plots 228, 233, 238 and 240 have alternative wall layouts,
speak to sales advisor for more information.

â€ Plots 228, 229 and 238 are handed.