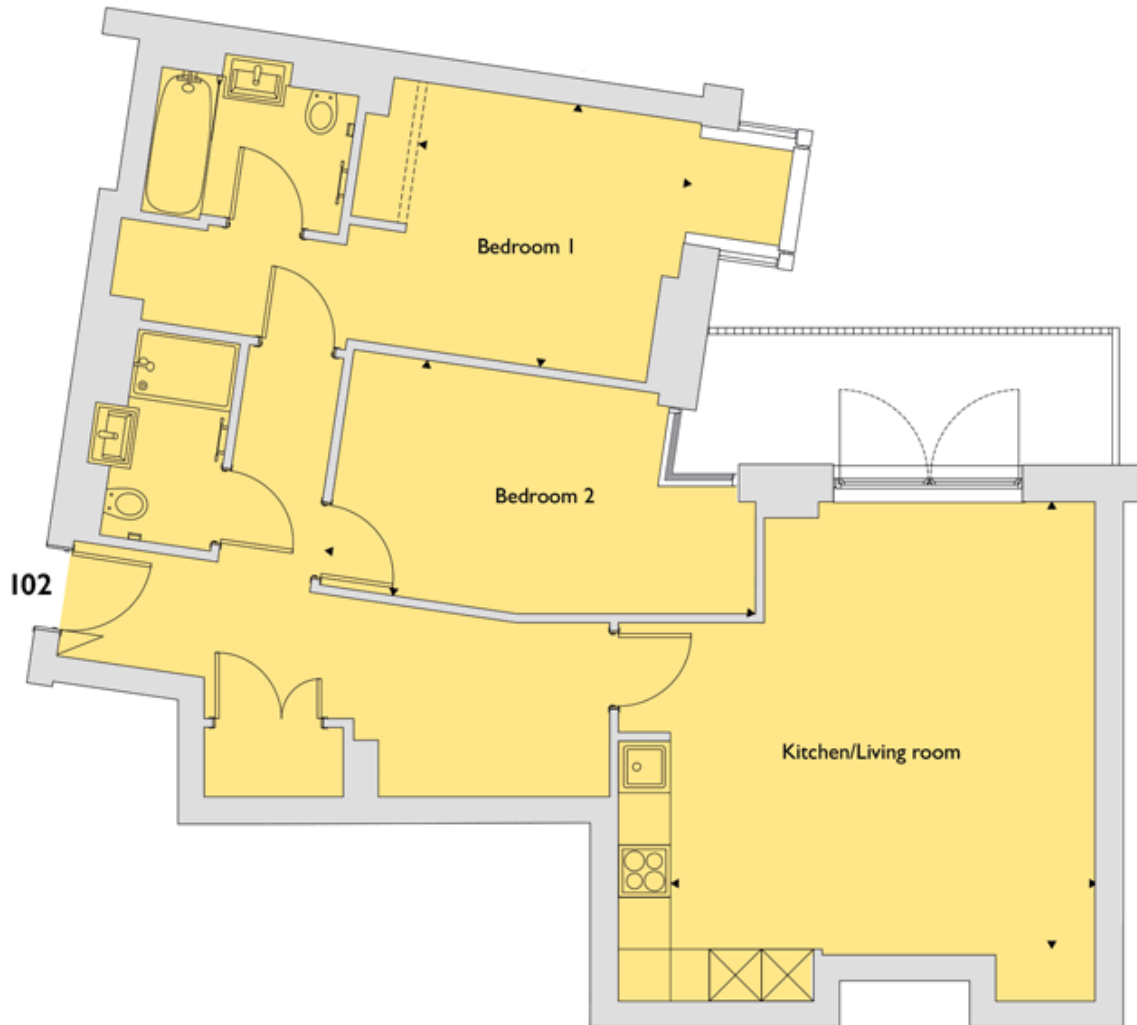


## Floor plans

### Level 1



#### **Kitchen/Living Room:**

4.93m x 5.16m (16' 02" x 16' 11")

#### **Bedroom 1:**

3.20m x 3.07m (10' 06" x 10' 01")

#### **Bedroom 2:**

5.03m x 2.74m (16' 06" x 9' 00")

#### **Key**