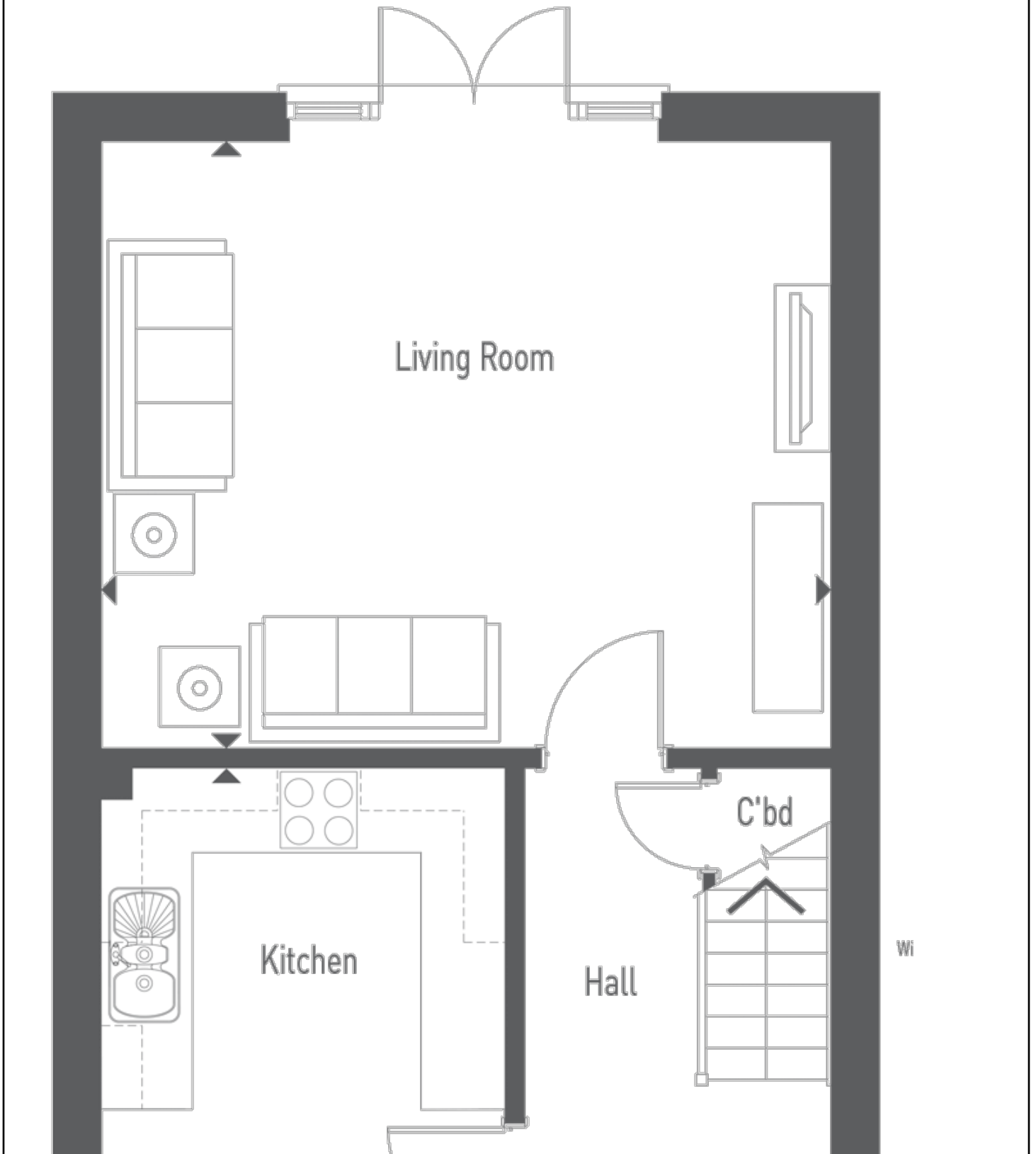
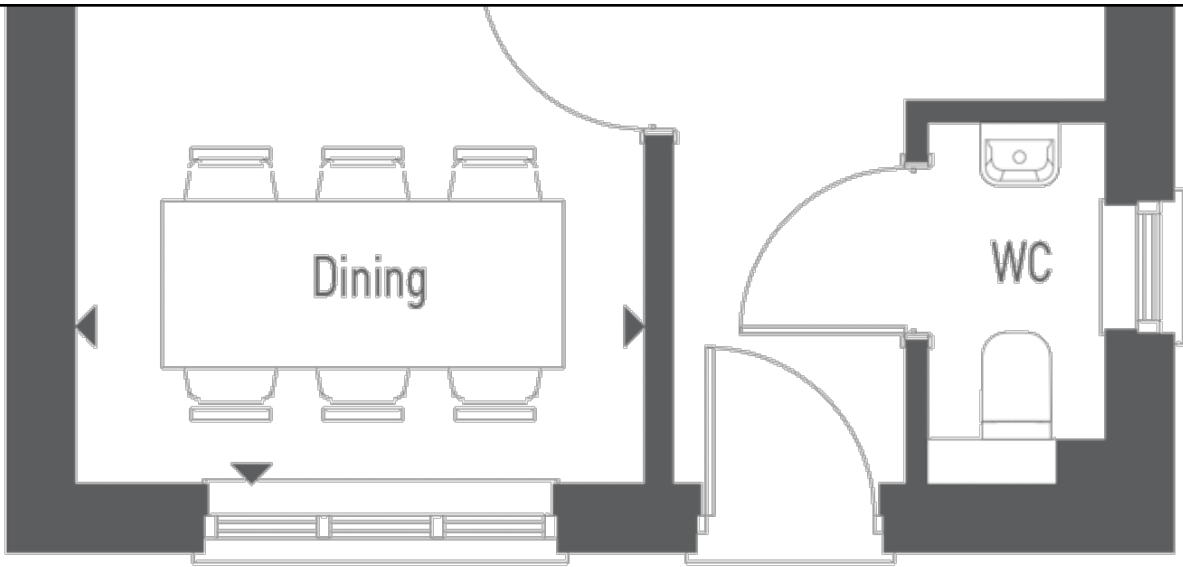


Floor plans

Ground floor





Kitchen/Dining:

2.90m x 5.23m (9' 06" x 17' 02")

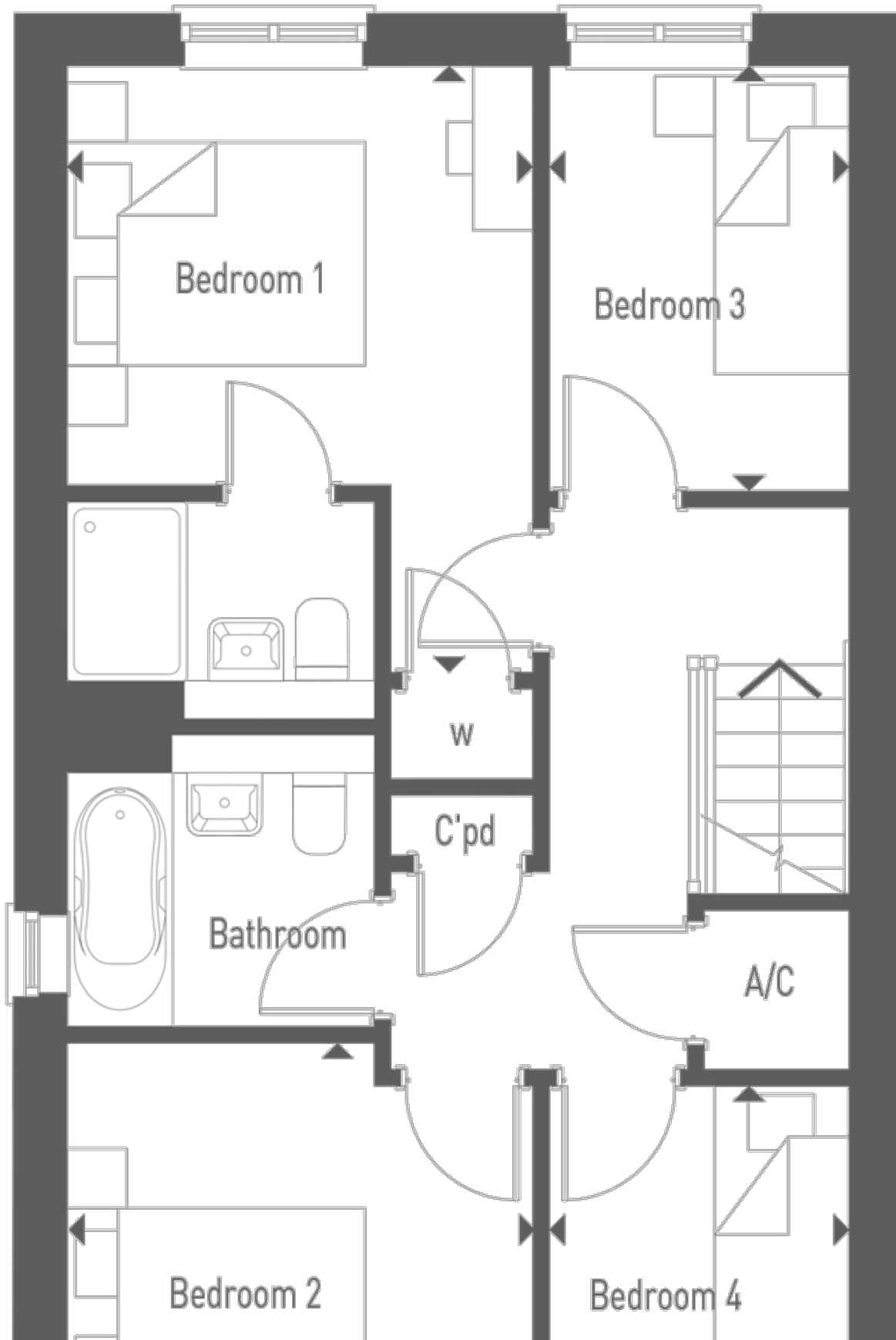
Living Room:

4.37m x 5.26m (14' 04" x 17' 03")

Key

A/C - Airing Cupboard C - Cupboard W - Wardrobe ~~â€~~ - Max Dimension

First Floor





Bedroom 1:

3.12m x 4.06m (10' 03" x 13' 04")

Bedroom 2:

3.12m x 3.20m (10' 03" x 10' 06")

Bedroom 3:

2.01m x 2.84m (6' 07" x 9' 04")

Bedroom 4:

2.01m x 2.90m (6' 07" x 9' 06")

Key

A/C - Airing Cupboard C - Cupboard W - Wardrobe ⌀ - Max Dimension