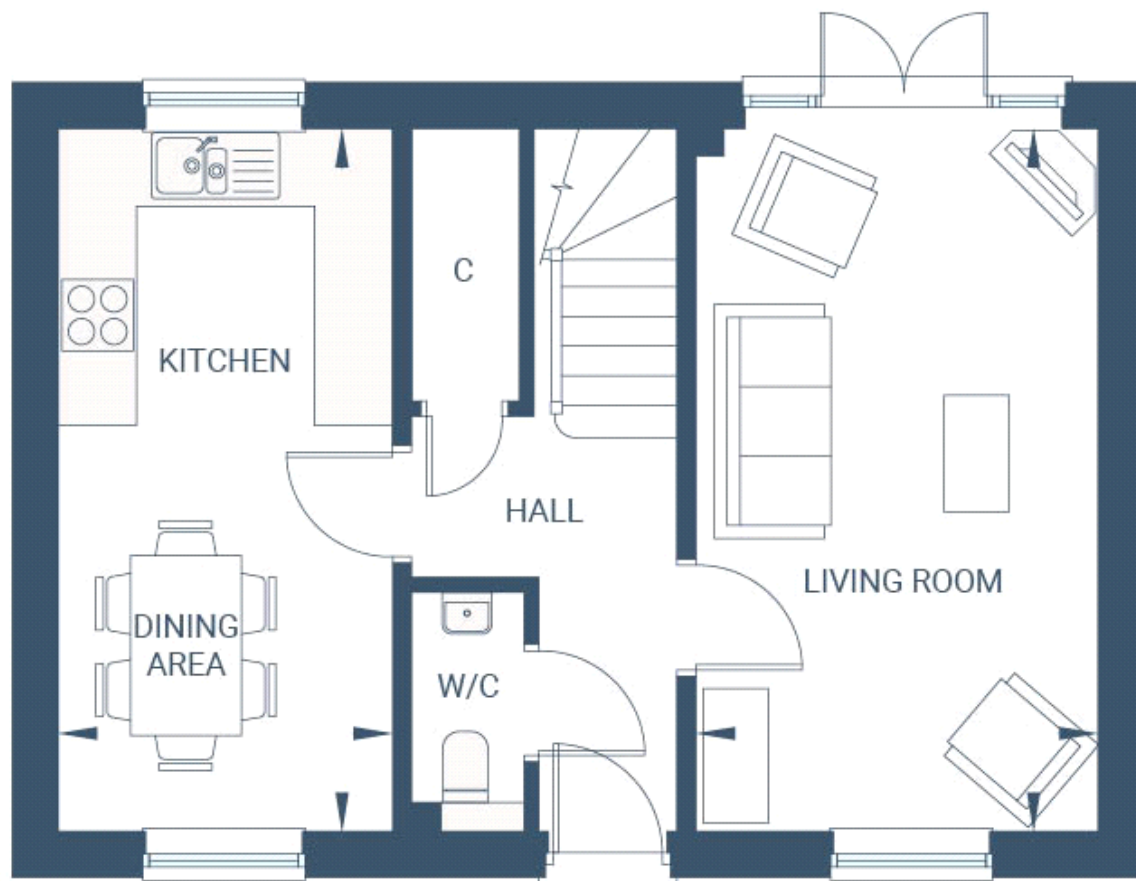


Floor plans

Ground Floor



Living Room :

5.41m x 3.10m (17' 09" x 10' 02")

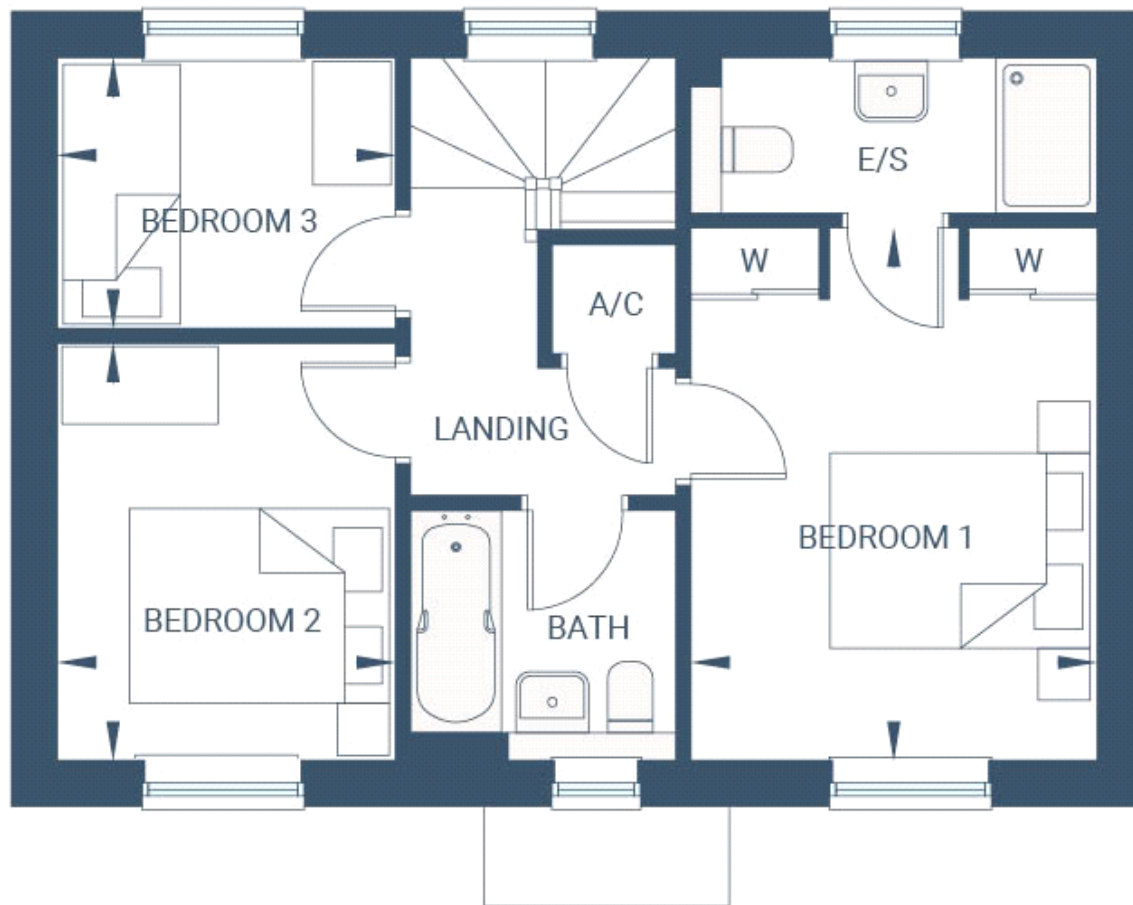
Kitchen/Dining Area:

5.41m x 2.57m (17' 09" x 8' 05")

Key

C: CUPBOARD W: WARDROBE E/S: EN SUITE A/C: AIRING CUPBOARD

First Floor



Bedroom 1:

4.09m x 3.12m (13' 05" x 10' 03")

Bedroom 2 :

3.23m x 2.62m (10' 07" x 8' 07")

Bedroom 3 :

2.08m x 2.62m (6' 10" x 8' 07")

Key

C: CUPBOARD W: WARDROBE E/S: EN SUITE A/C: AIRING CUPBOARD