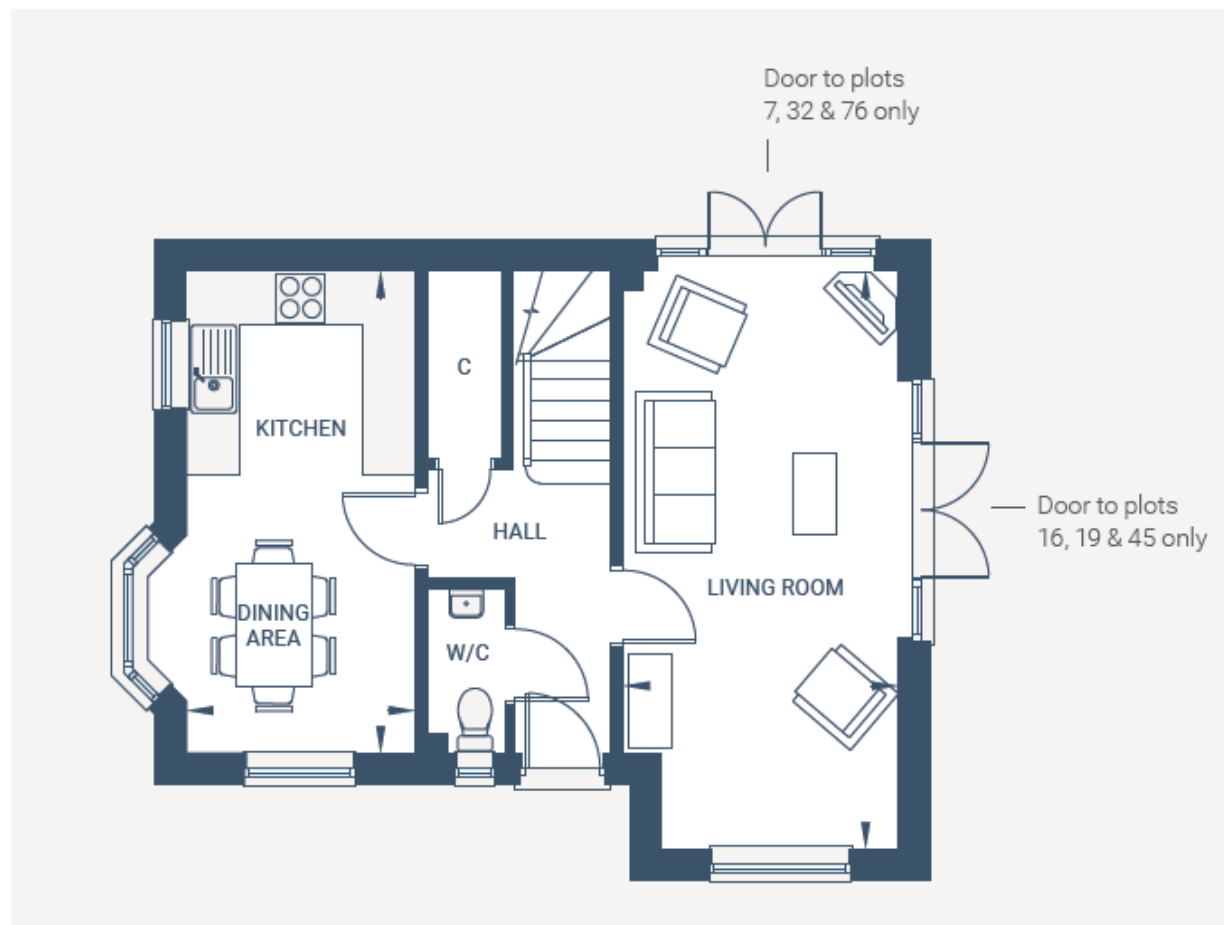


Floor plans

Ground Floor



Living Room:

6.48m x 3.10m (21' 03" x 10' 02")

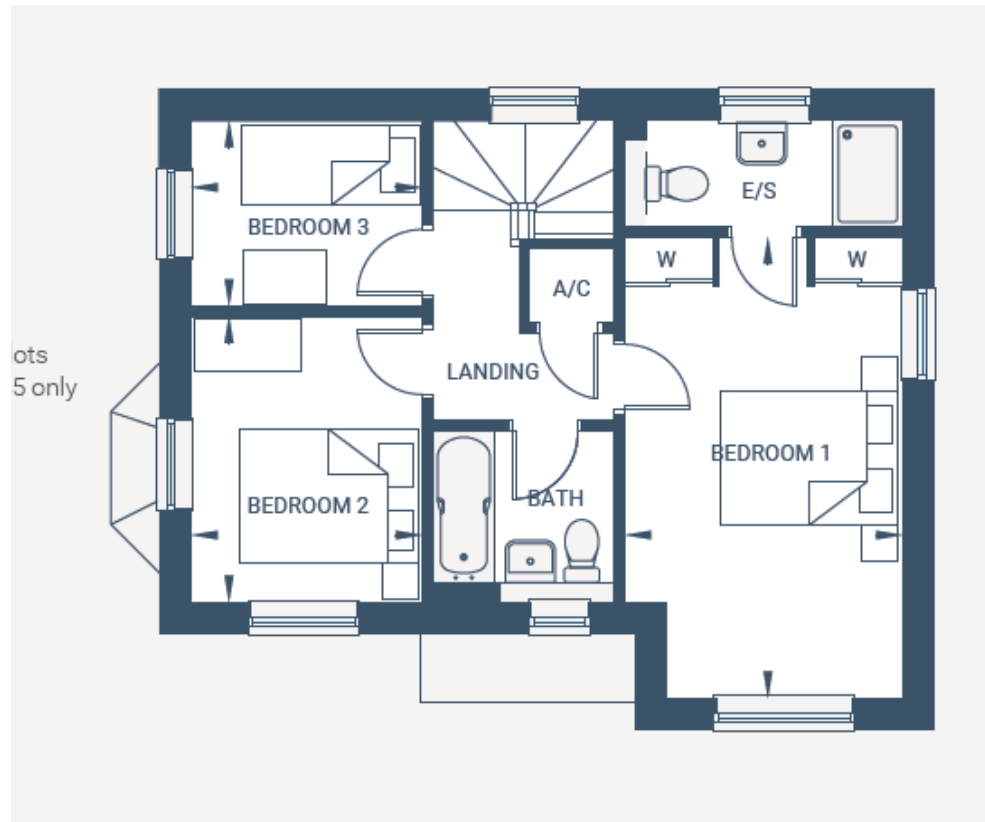
Kitchen/Dining Room:

5.41m x 2.57m (17' 09" x 8' 05")

Key

W â€ Wardrobe C â€ Cupboard AC â€ Airing Cupboard â€â€ Max Dimension

First Floor



Bedroom 1:

5.18m x 3.12m (16' 12" x 10' 03")

Bedroom 2:

3.23m x 2.62m (10' 07" x 8' 07")

Bedroom 3:

2.08m x 2.62m (6' 10" x 8' 07")

Key

W = Wardrobe C = Cupboard AC = Airing Cupboard = Max Dimension