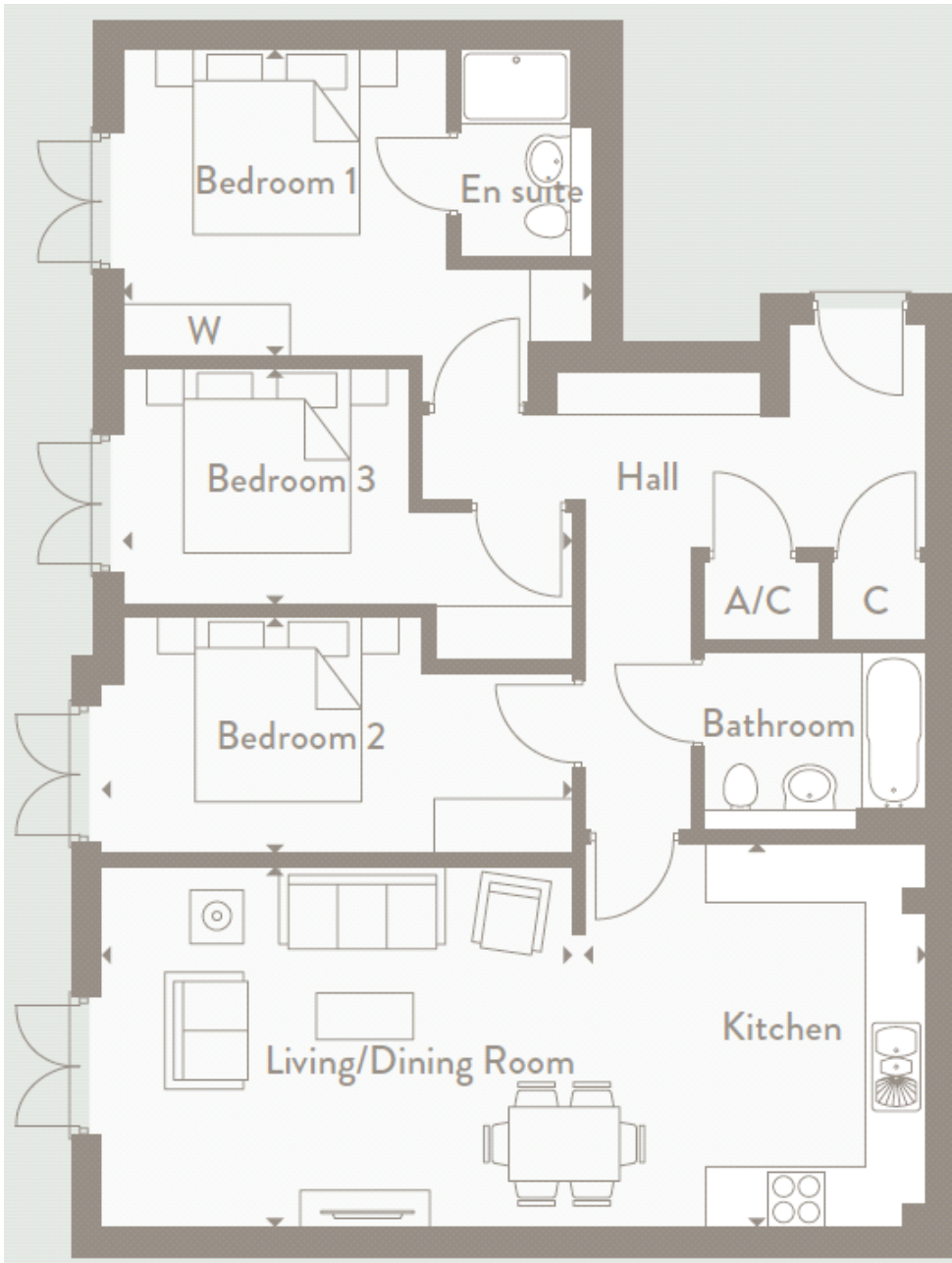


## Floor plans

### Plot 21



#### **Living/Dining Room:**

5.08m x 3.91m (16' 08" x 12' 10")

#### **Kitchen:**

3.66m x 4.17m (12' 00" x 13' 08")

#### **Bedroom 1:**

5.08m x 3.33m (16' 08" x 10' 11")

#### **Bedroom 2:**

5.08m x 2.54m (16' 08" x 8' 04")

#### **Bedroom 3:**

4.60m x 2.57m (15' 11" x 8' 05")

