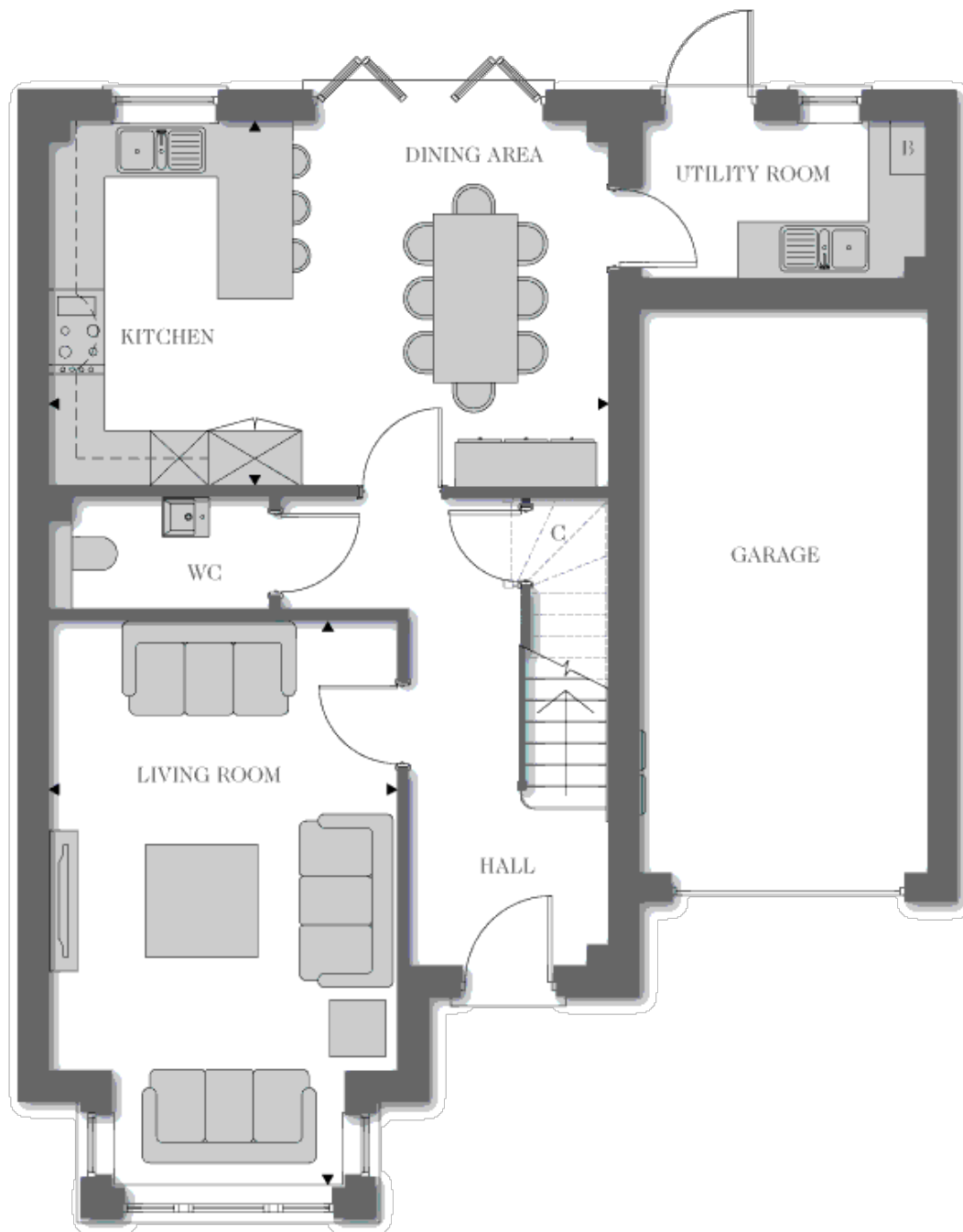


## Floor plans

### Ground Floor



#### **Kitchen/ Dining Area:**

5.92m x 3.86m (19' 05" x 12' 08")

#### **Living Room :**

3.68m x 5.99m (12' 01" x 19' 08")

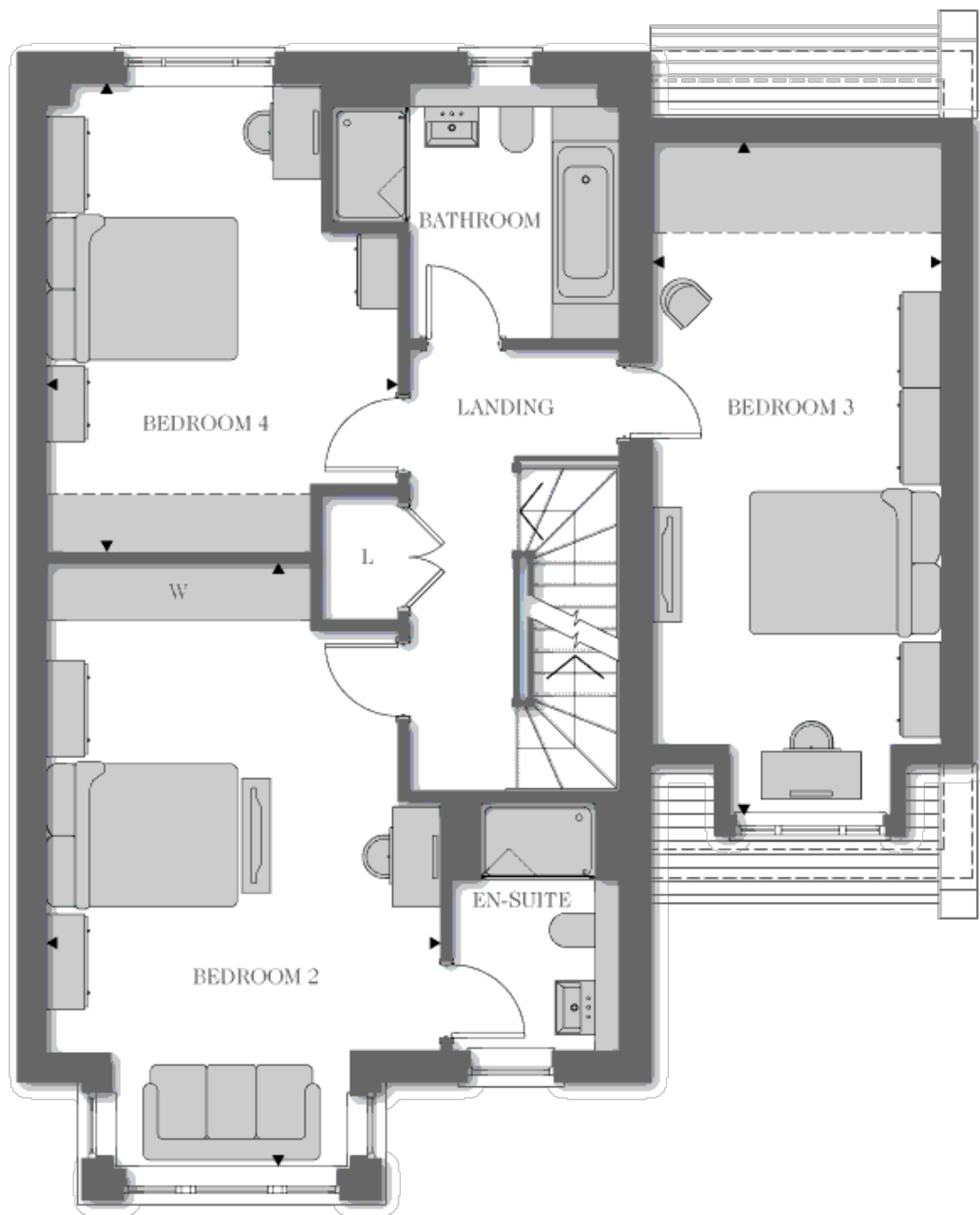
#### **Key**

C Cupboards

AC Airing Cupboards

W Wardrobe

## First Floor



### Bedroom 2:

4.06m x 6.27m (13' 04" x 20' 07")

### Bedroom 3:

6.35m x 2.100m (20' 10" x 9' 10")

### Bedroom 4:

3.63m x 4.85m (11' 11" x 15' 11")

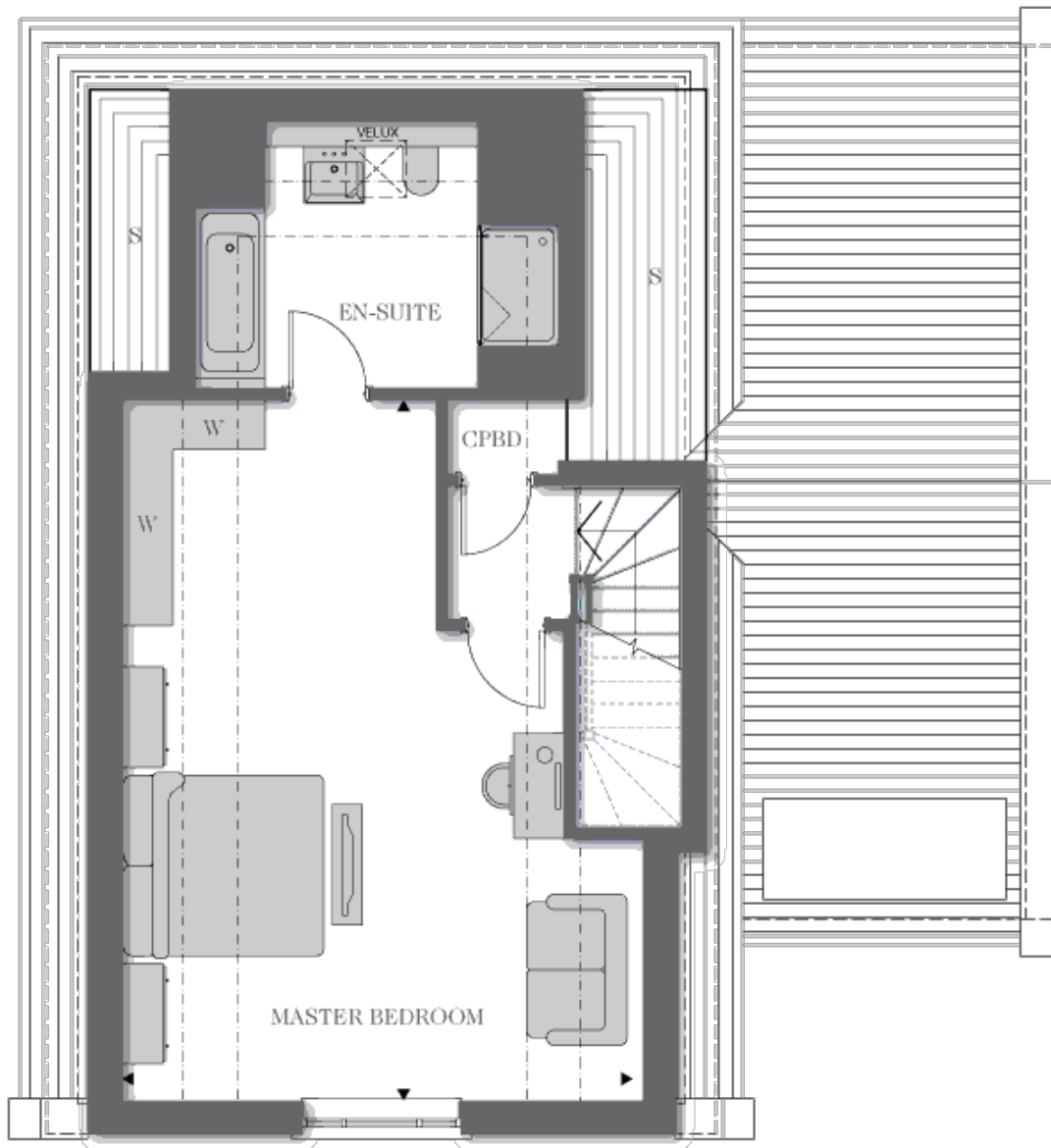
### Key

C Cupboards

AC Airing Cupboards

W Wardrobe

## Second Floor



### Master Bedroom :

5.11m x 6.93m (16' 09" x 22' 09")

### Key

C Cupboards

AC Airing Cupboards

W Wardrobe