

Floor plans

Ground Floor



Kitchen:

3.61m x 3.10m (11' 10" x 10' 02")

Dining Area:

4.22m x 2.95m (13' 10" x 9' 08")

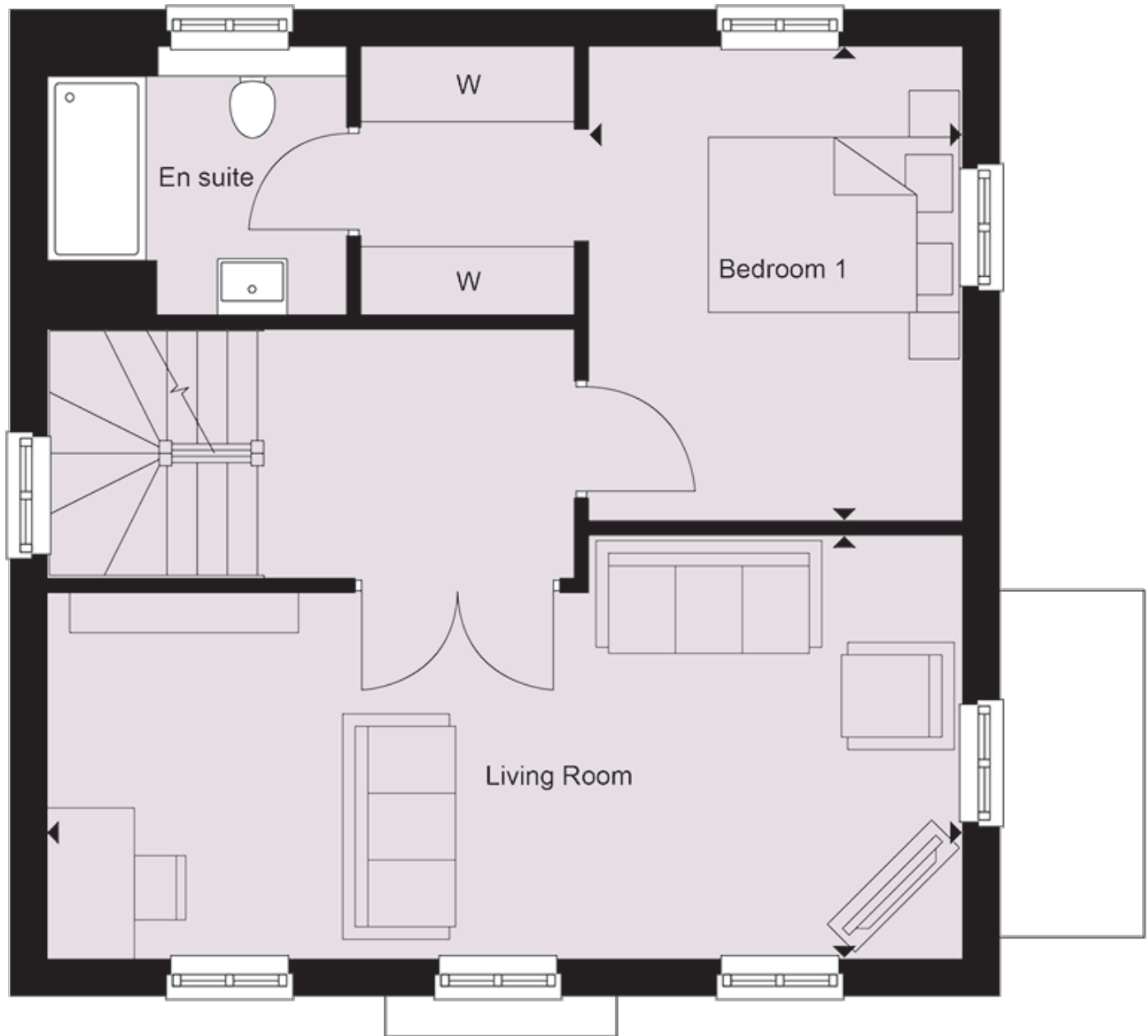
Snug:

2.90m x 2.82m (9' 06" x 9' 03")

Key

W â€ Wardrobe C â€ Cupboard AC â€ Airing Cupboard â€ Max Dimension

First Floor



Living Room:

7.29m x 3.35m (23' 11" x 11' 00")

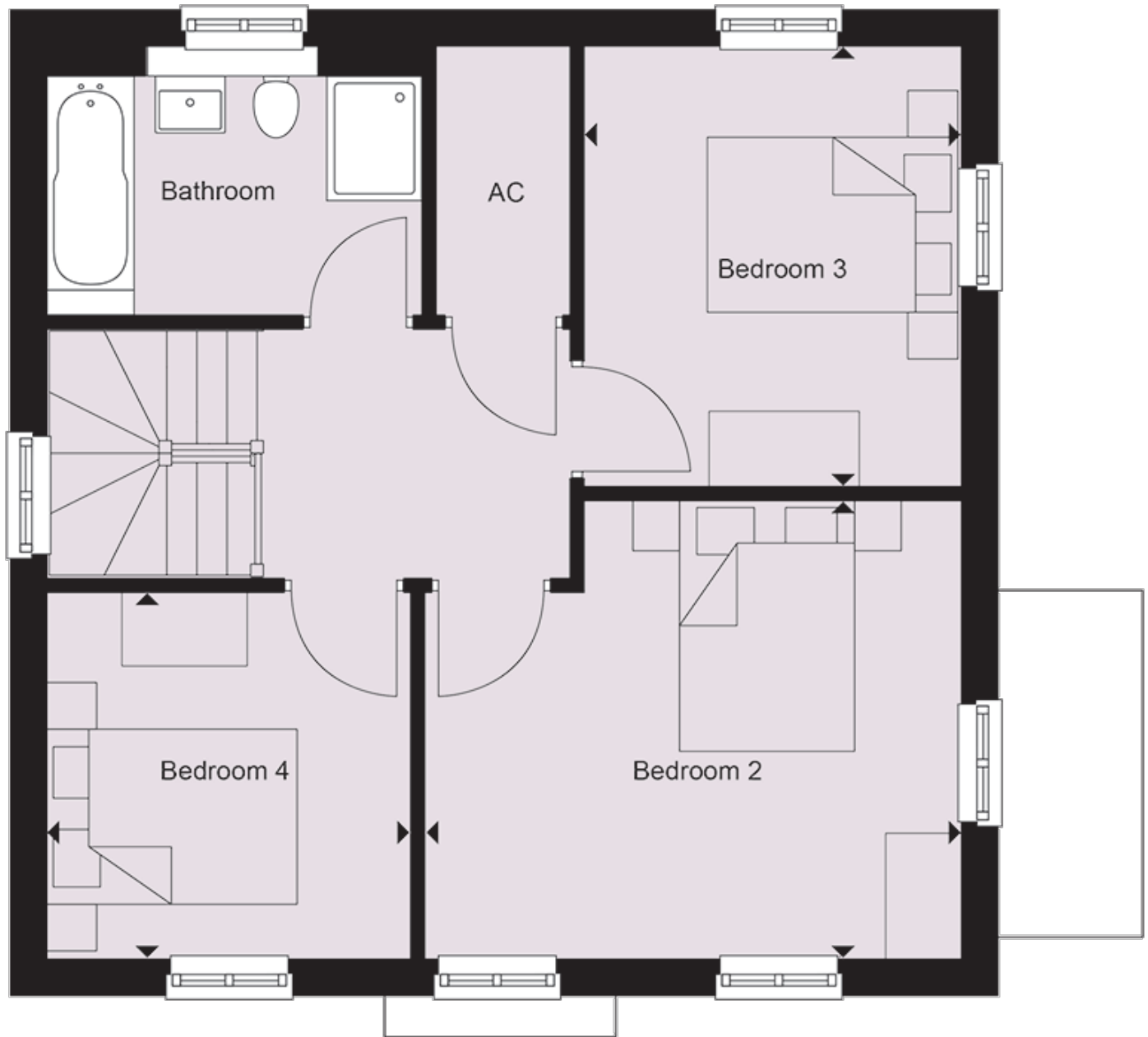
Bedroom 1:

3.76m x 2.97m (12' 04" x 9' 09")

Key

W â€ Wardrobe C â€ Cupboard AC â€ Airing Cupboard â€â€ Max Dimension

Second Floor



Bedroom 2:

4.29m x 3.66m (14' 01" x 12' 00")

Bedroom 3:

3.51m x 2.100m (11' 06" x 9' 10")

Bedroom 4:

2.95m x 2.87m (9' 08" x 9' 05")

Key

W â€" Wardrobe C â€" Cupboard AC â€" Airing Cupboard â€"â€" Max Dimension