

Floor plans

Ground Floor



Kitchen:

4.24m x 3.56m (13' 11" x 11' 08")

Dining Area:

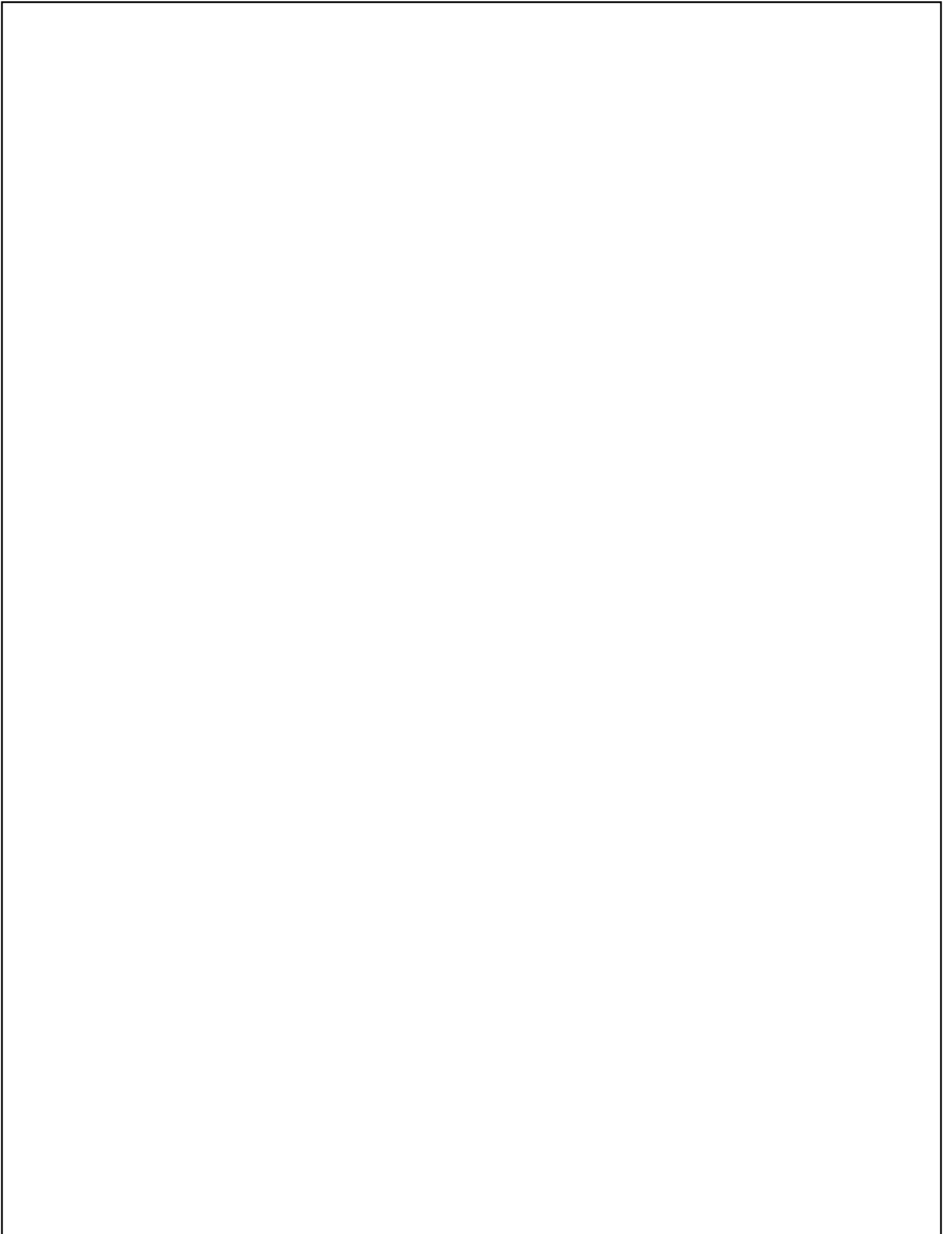
4.24m x 2.64m (13' 11" x 8' 08")

Living Room:

6.05m x 3.56m (19' 10" x 11' 08")

Key

W â€ Wardrobe C â€ Cupboard AC â€ Airing Cupboard â€â€ Max Dimension â€ Velux window



First floor



Bedroom 1:

4.32m x 3.58m (14' 02" x 11' 09")

Bedroom 2:

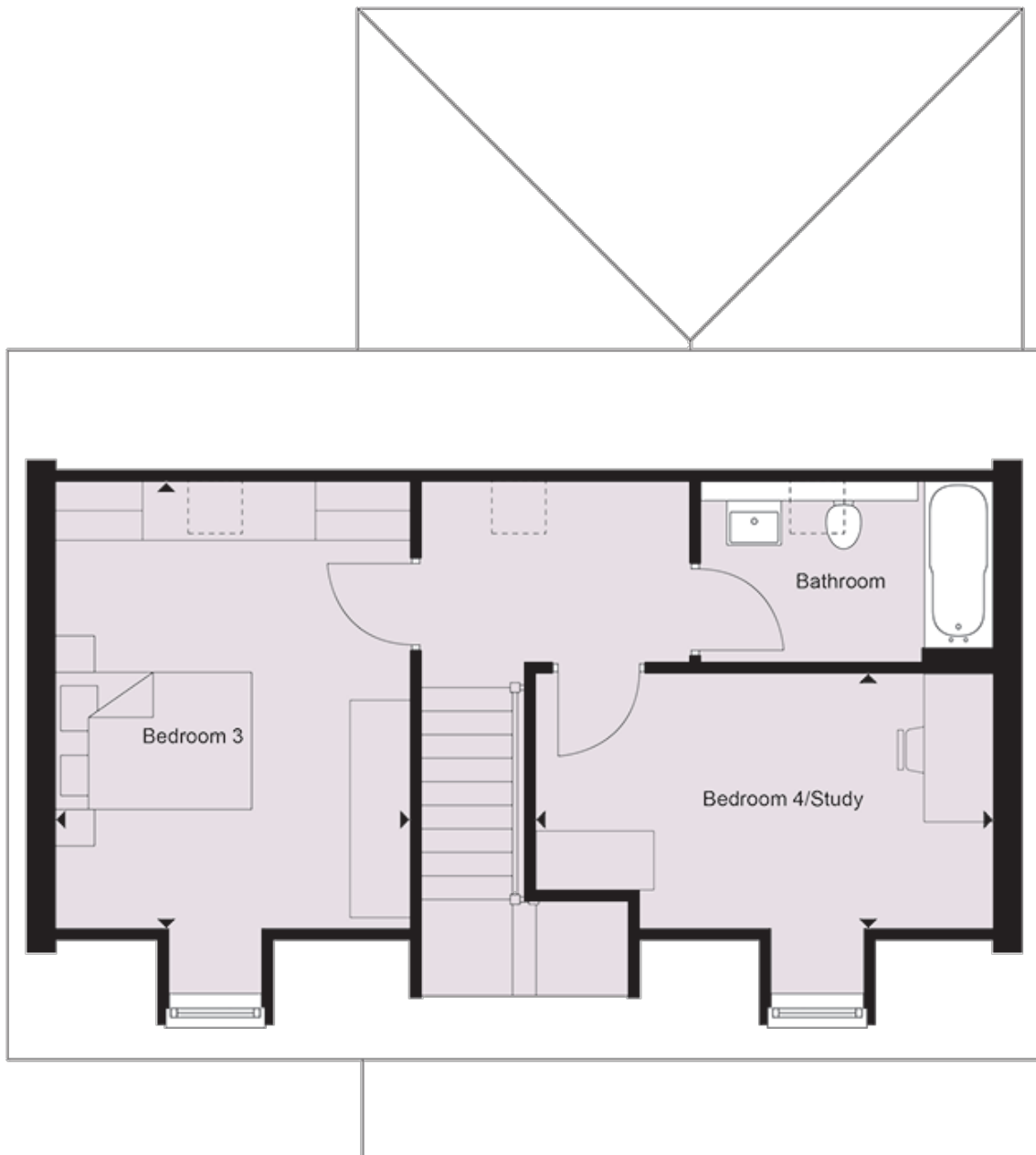
4.32m x 3.61m (14' 02" x 11' 10")

Key

W = Wardrobe C = Cupboard AC = Airing Cupboard = Max Dimension = Velux window

Plots 60, 74, 82, 91, 108, 112, 125 handed to plot shown

Second floor



Bedroom 3:

4.55m x 3.61m (14' 11" x 11' 10")

Bedroom 4:

4.65m x 2.59m (15' 03" x 8' 06")

Key

W = Wardrobe C = Cupboard AC = Airing Cupboard = Max Dimension = Velux window

Plots 60, 74, 82, 91, 108, 112, 125 handed to plot shown