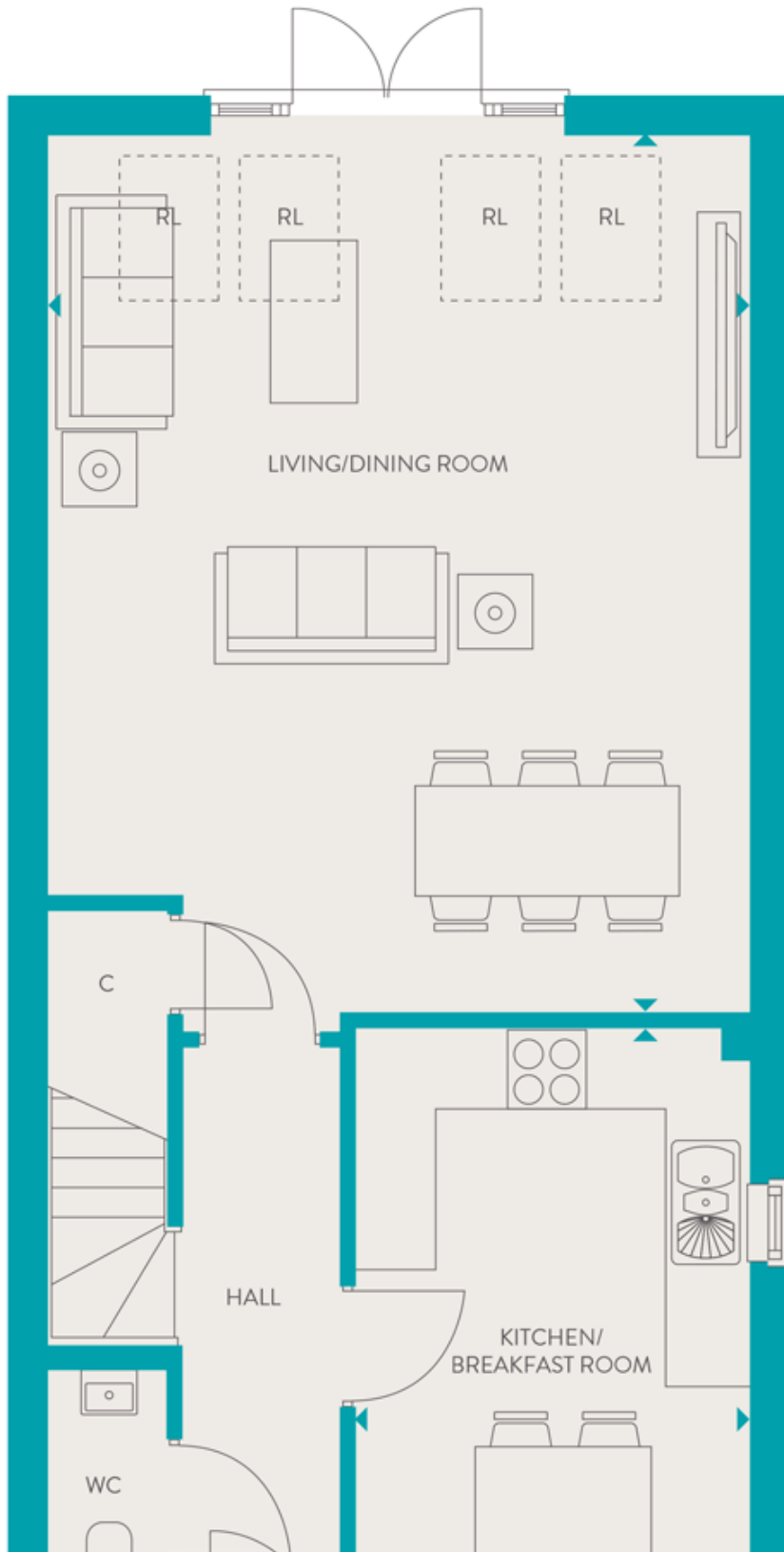
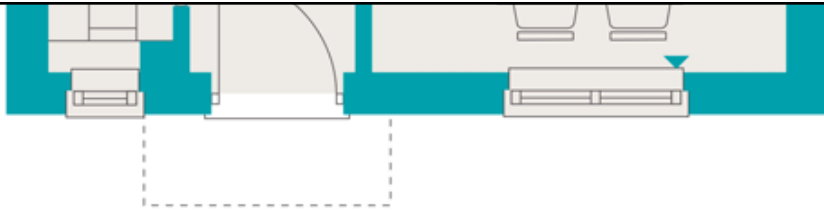


## Floor plans

### Ground Floor





**Living/Dining Room:**

6.73m x 5.38m (22' 01" x 17' 08")

**Kitchen/Breakfast Room:**

4.55m x 3.02m (14' 11" x 9' 11")

**Key**

AC Airing Cupboard

C Cupboard

W Wardrobe

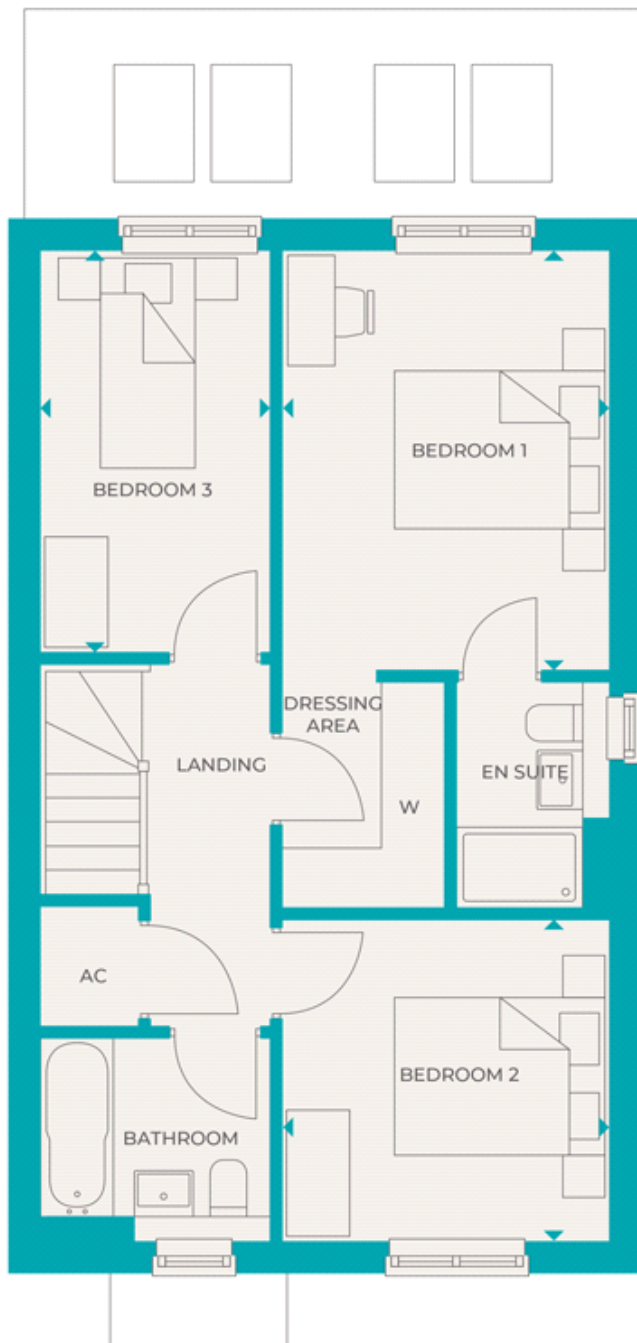
RF - Roof Lights

--- - Reduced head height

\*Handed to floorplans shown

â€¢ Maximum Dimensions

## First Floor



### Bedroom 1:

3.96m x 3.10m (13' 00" x 10' 02")

### Bedroom 2:

3.10m x 3.05m (10' 02" x 10' 00")

### Bedroom 3:

3.78m x 2.13m (12' 05" x 7' 00")

### Key

AC Airing Cupboard

C Cupboard

W Wardrobe

RF - Roof Lights

--- - Reduced head height

\*Handed to floorplans shown

â€ Maximum Dimensions