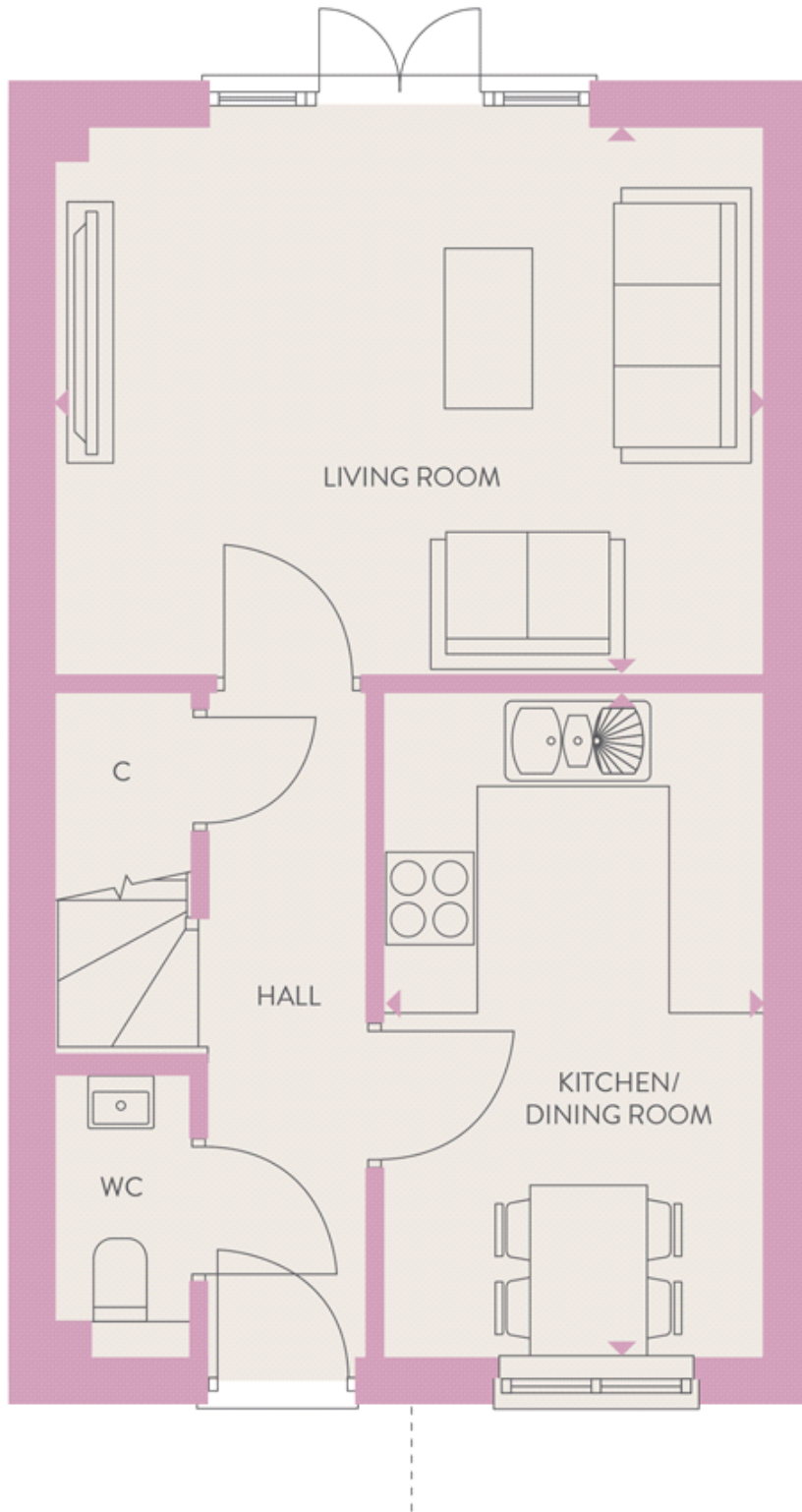


Floor plans

Ground Floor



Living Room:

4.65m x 3.56m (15' 03" x 11' 08")

Kitchen/Dining Room:

4.34m x 2.46m (14' 03" x 8' 01")

Key

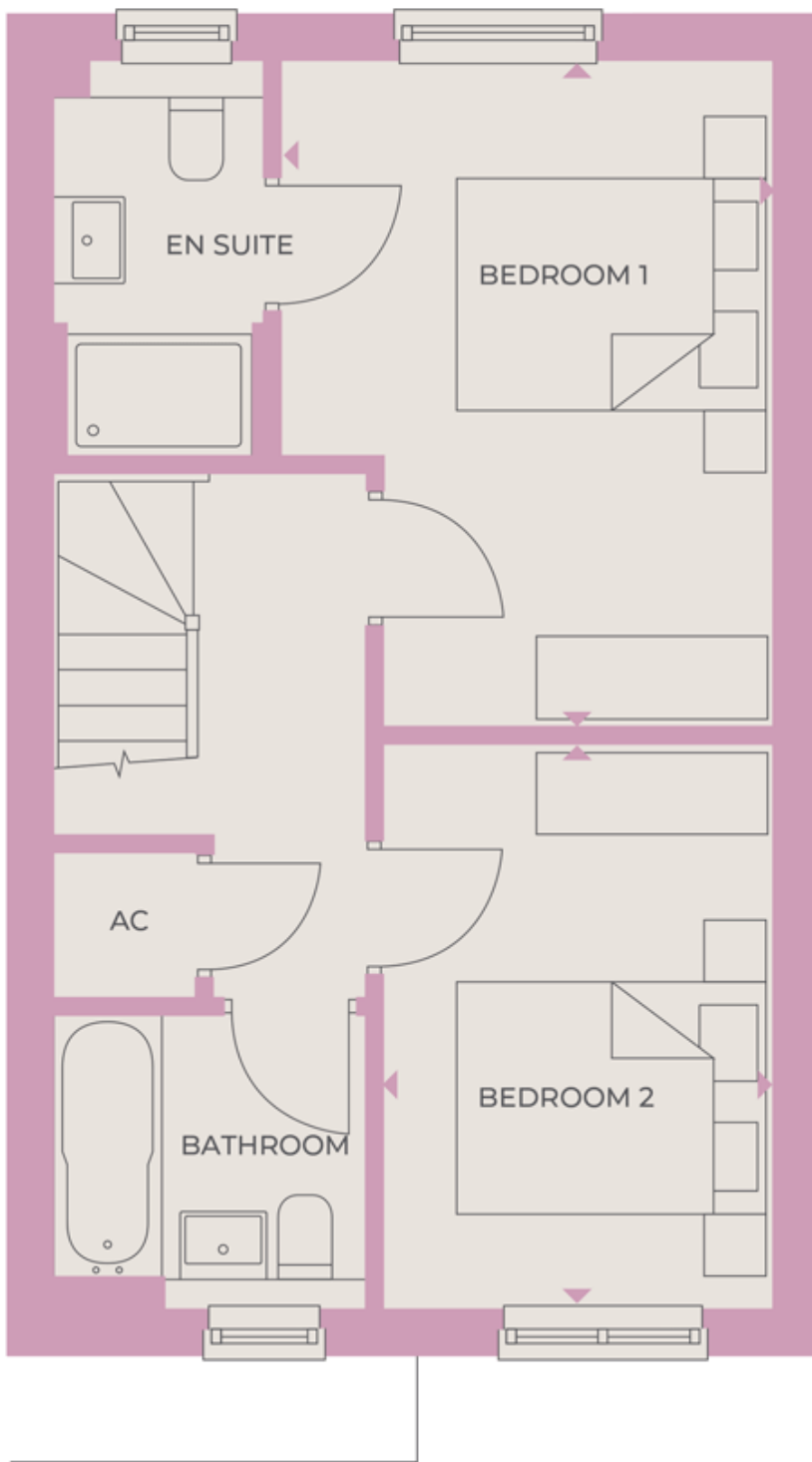
AC Airing Cupboard

C Cupboard

*Handed to floorplans shown

â€ Maximum Dimensions

First Floor



Bedroom 1:

4.29m x 3.18m (14' 01" x 10' 05")

Bedroom 2:

3.66m x 2.51m (12' 00" x 8' 03")

Key

AC Airing Cupboard

C Cupboard

*Handed to floorplans shown

â€ Maximum Dimensions