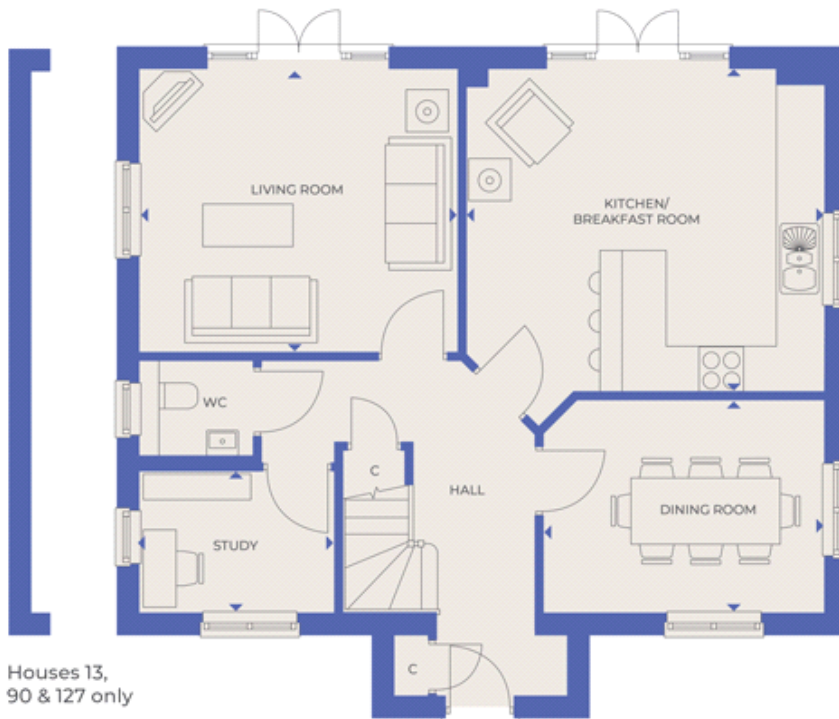


## Floor plans

### Ground Floor



#### **Living Room:**

4.32m x 3.84m (14' 02" x 12' 07")

#### **Kitchen/Breakfast Room:**

4.88m x 4.37m (16' 00" x 14' 04")

#### **Dining Room:**

3.81m x 2.87m (12' 06" x 9' 05")

#### **Study:**

2.64m x 1.93m (8' 08" x 6' 04")

#### **Key**

AC Airing Cupboard

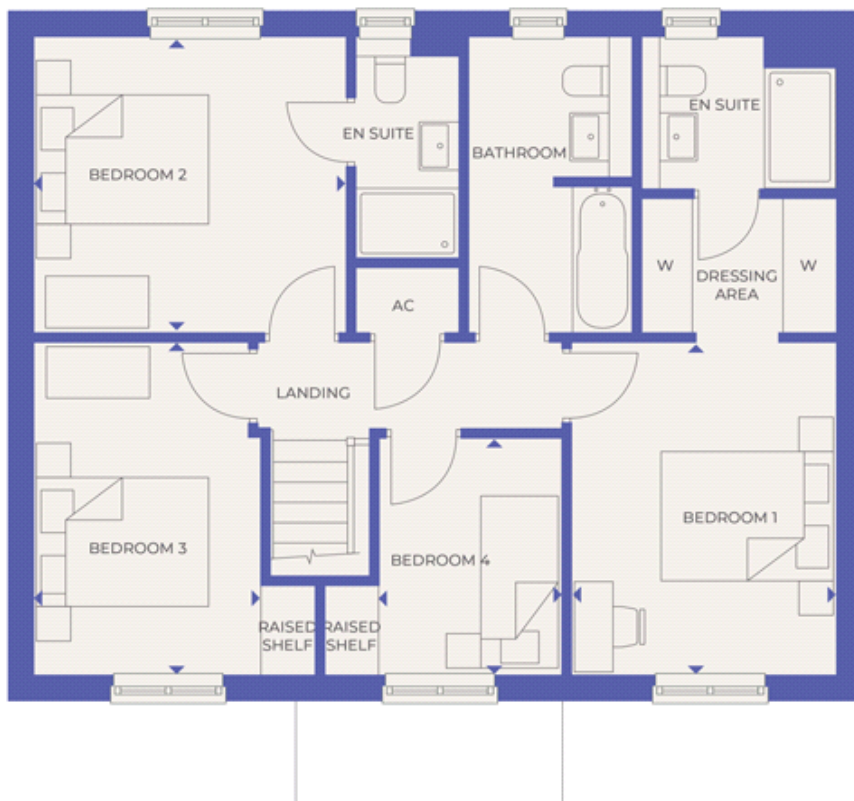
C Cupboard

W Wardrobe

\*Handed to floorplans shown

â€© Maximum Dimensions

## First Floor



### Bedroom 1:

3.84m x 3.05m (12' 07" x 10' 00")

### Bedroom 2:

3.63m x 3.43m (11' 11" x 11' 03")

### Bedroom 3:

3.84m x 2.64m (12' 07" x 8' 08")

### Bedroom 4:

2.72m x 2.11m (8' 11" x 6' 11")

### Key

AC Airing Cupboard

C Cupboard

W Wardrobe

\*Handed to floorplans shown

â€© Maximum Dimensions