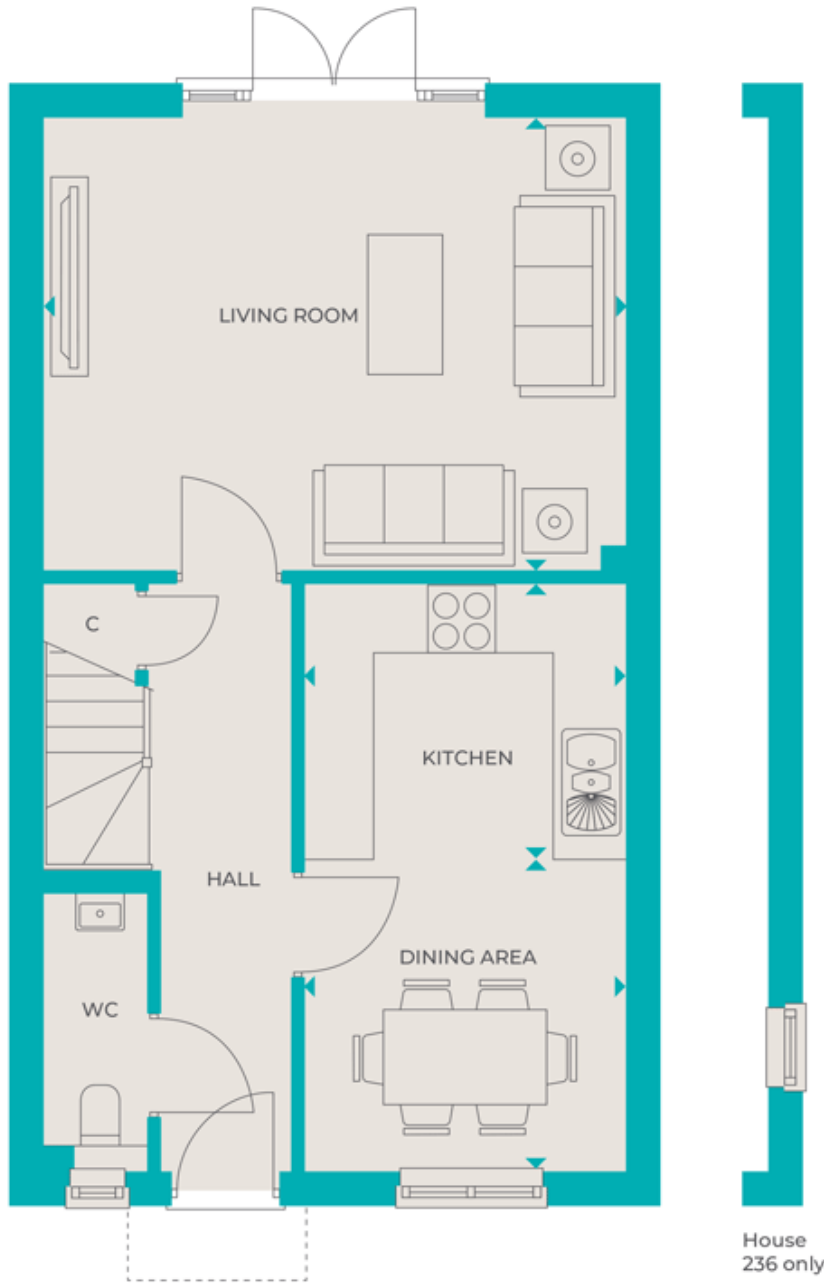


## Floor plans

### Ground Floor



#### Living Room:

5.21m x 4.01m (17' 01" x 13' 02")

#### Kitchen:

2.84m x 2.44m (9' 04" x 8' 00")

#### Dining Area:

2.84m x 2.77m (9' 04" x 9' 01")

#### Key

AC Airing Cupboard

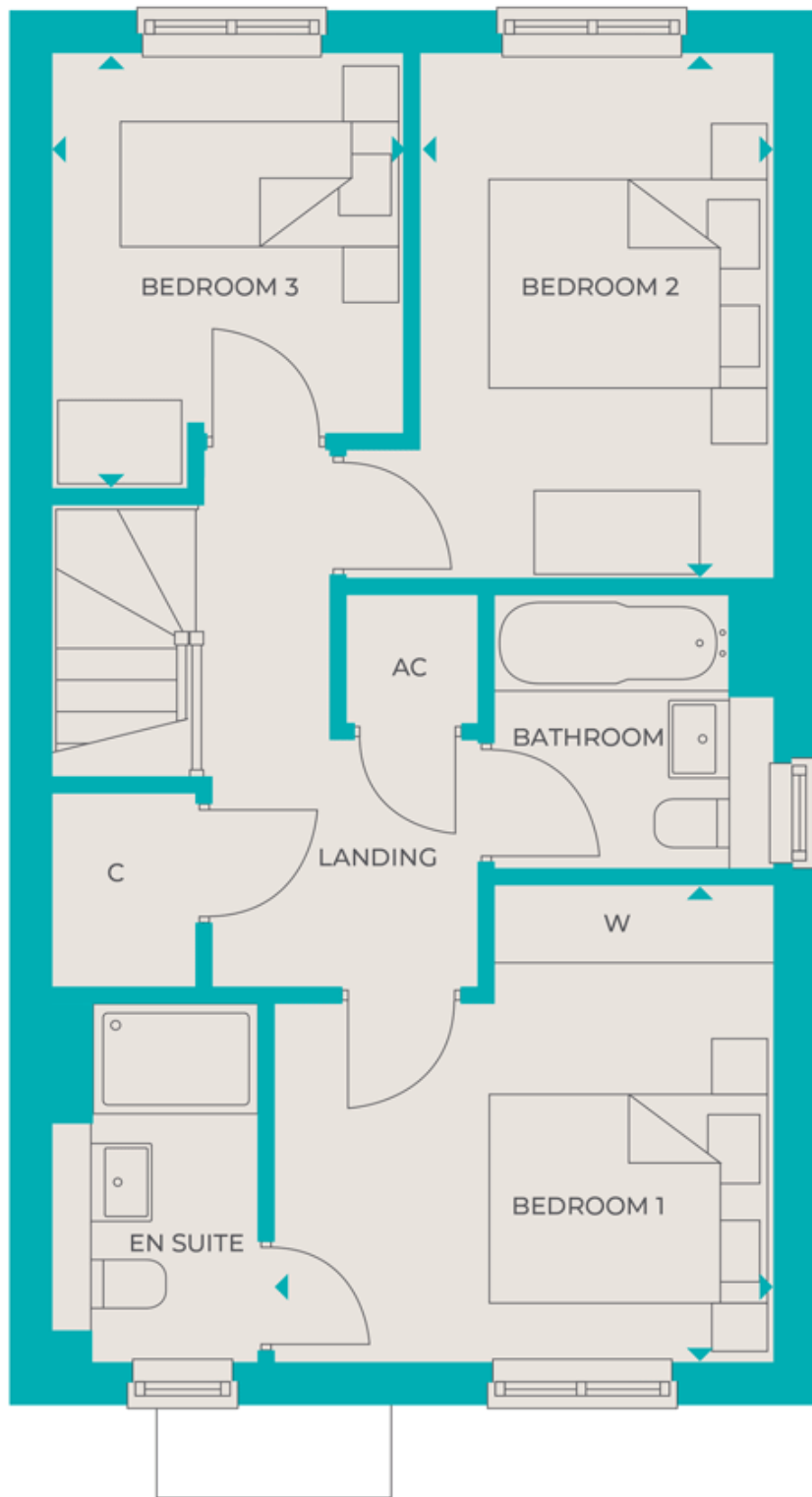
C Cupboard

W Wardrobe

\*Handed to floorplans shown

â€ Maximum Dimensions

## First Floor



**Bedroom 1:**  
3.61m x 3.43m (11' 10" x 11' 03")

**Bedroom 2:**  
3.78m x 2.54m (12' 05" x 8' 04")

**Bedroom 3:**

3.15m x 2.54m (10' 04" x 8' 04")

**Key**

AC Airing Cupboard

C Cupboard

W Wardrobe

\*Handed to floorplans shown

â€ Maximum Dimensions