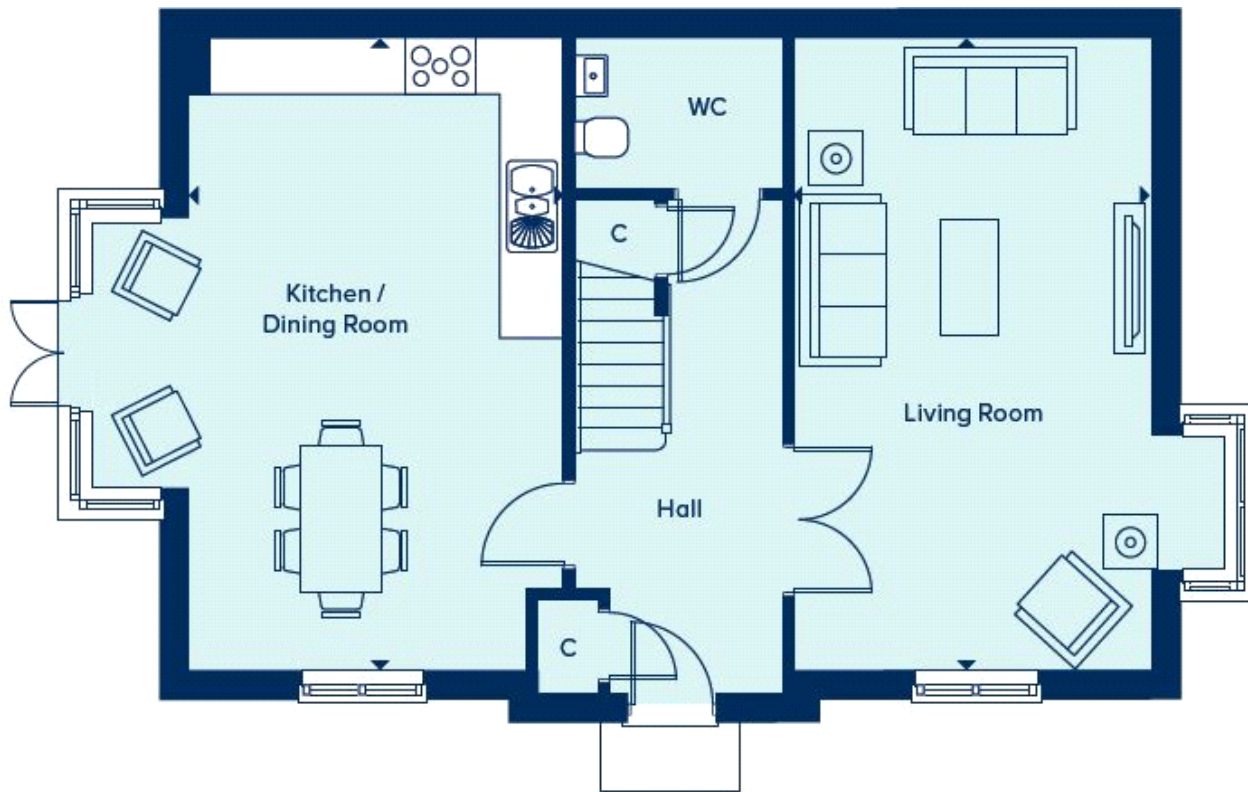


## Floor plans

### Ground Floor



#### Living Room:

6.60m x 3.73m (21' 08" x 12' 03")

#### Kitchen/Dining Room:

6.60m x 3.91m (21' 08" x 12' 10")

#### Key

AC Airing Cupboard

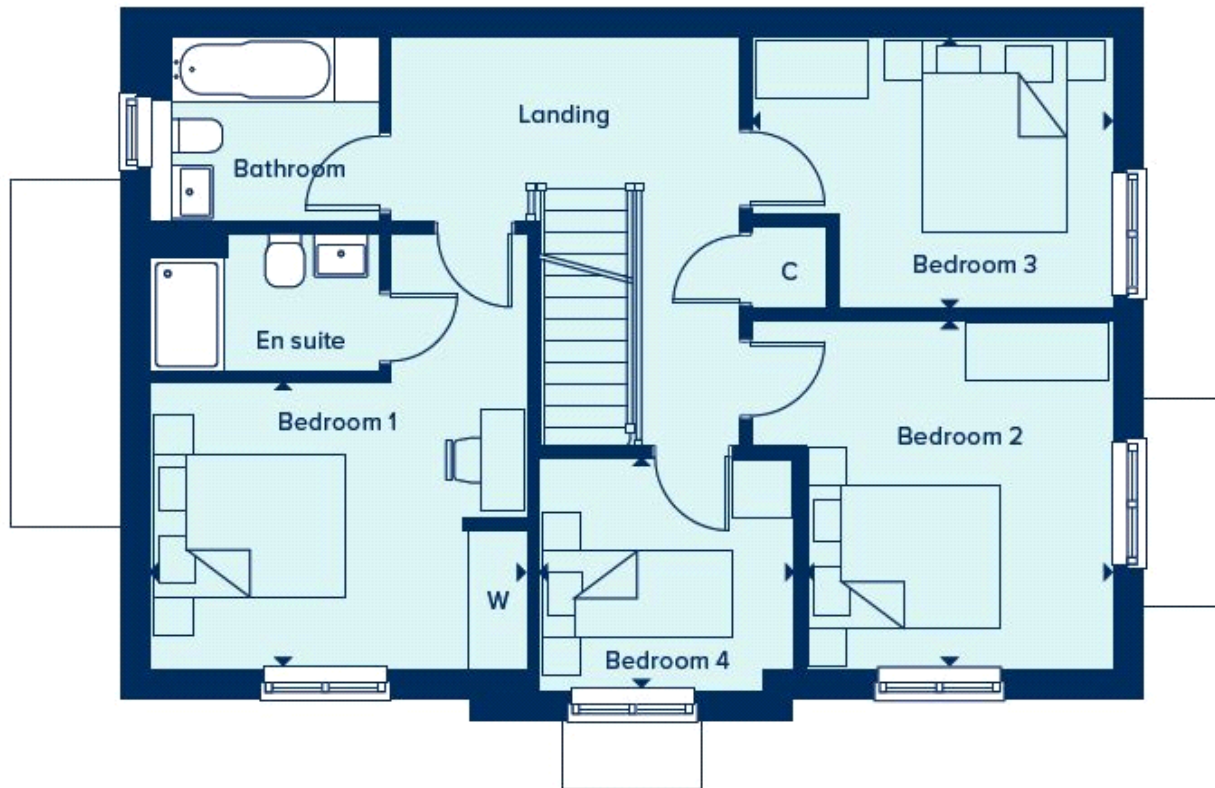
C Cupboard

W Wardrobe

\*Handed to floorplans shown

â€ Maximum Dimensions

## First Floor



### Bedroom 1:

3.94m x 2.100m (12' 11" x 9' 10")

### Bedroom 2:

3.63m x 3.23m (11' 11" x 10' 07")

### Bedroom 3:

3.78m x 2.84m (12' 05" x 9' 04")

### Bedroom 4:

2.67m x 2.44m (8' 09" x 8' 00")

### Key

AC Airing Cupboard

C Cupboard

W Wardrobe

\*Handed to floorplans shown

â€© Maximum Dimensions