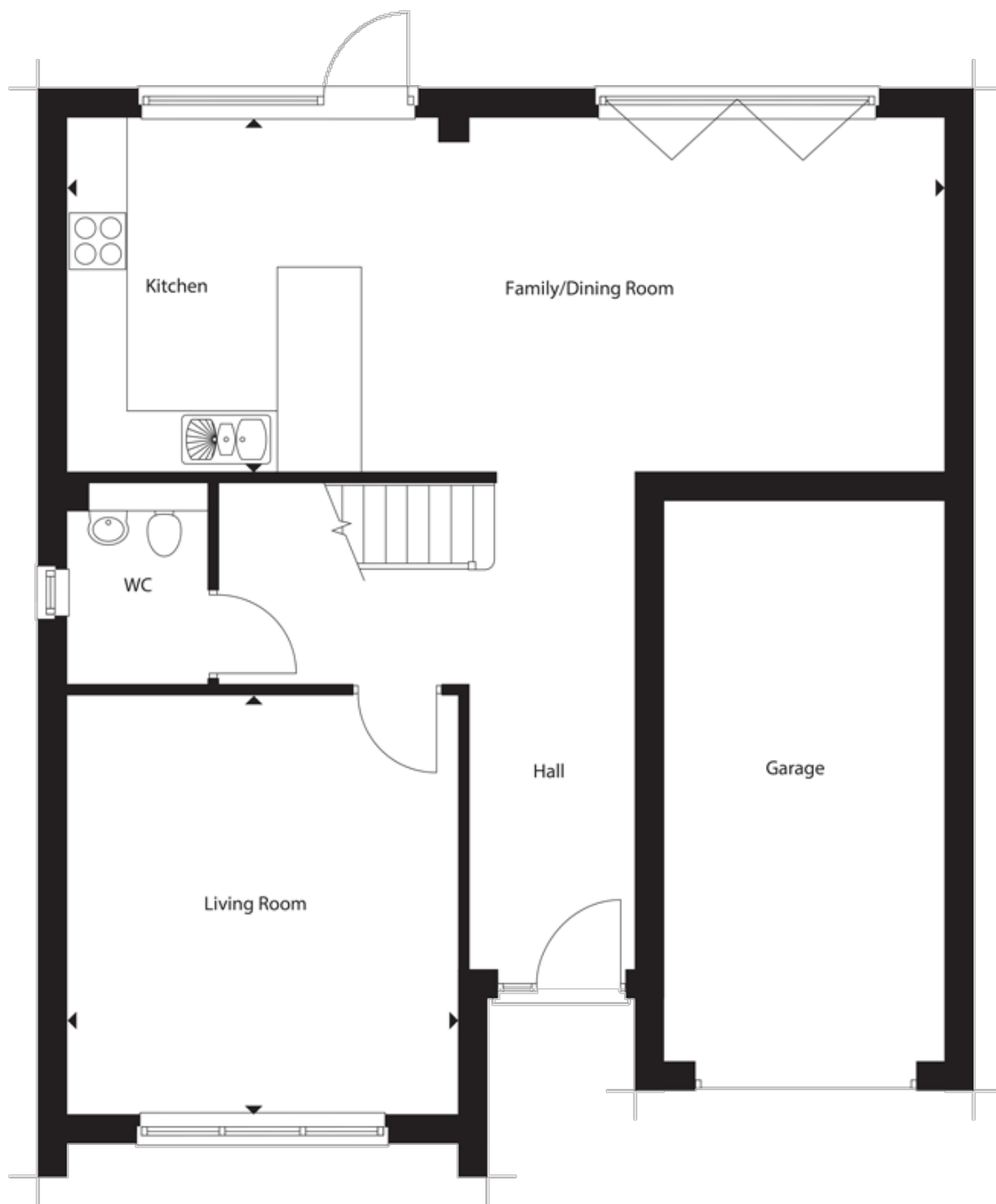


## Floor plans

### Ground floor plan



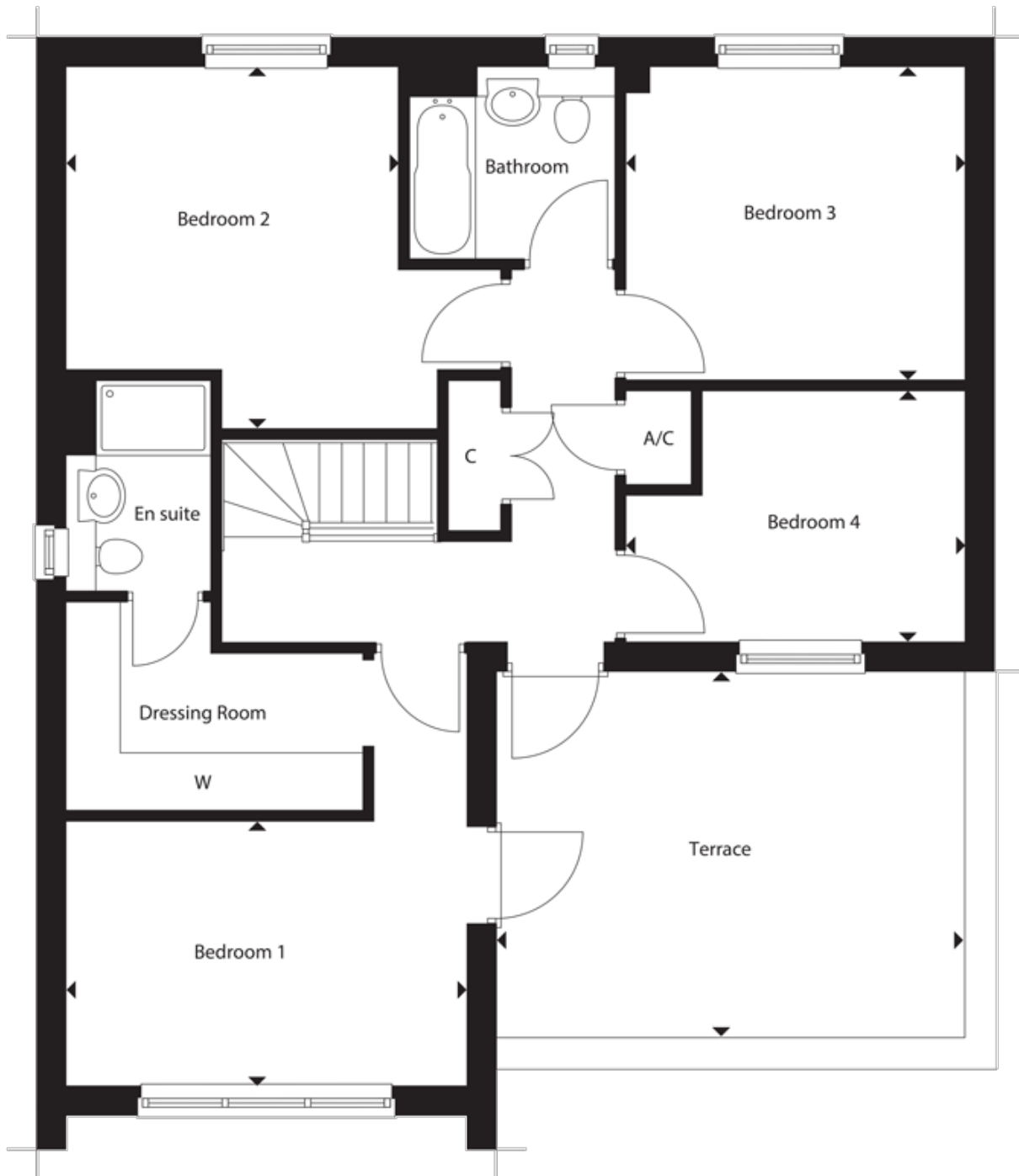
**Kitchen/Dining/Family room:**

9.14m x 3.81m (30' 00" x 12' 06")

**Living Room:**

4.47m x 4.19m (14' 08" x 13' 09")

## First floor plan



### Bedroom 1:

4.19m x 2.79m (13' 09" x 9' 02")

### Bedroom 2:

3.84m x 3.48m (12' 07" x 11' 05")

### Bedroom 3:

3.53m x 3.28m (11' 07" x 10' 09")

### Bedroom 4:

3.53m x 2.67m (11' 07" x 8' 09")