

Floor plans

Ground Floor



Kitchen:

3.35m x 2.21m (11' 00" x 7' 03")

Living/Dining Room:

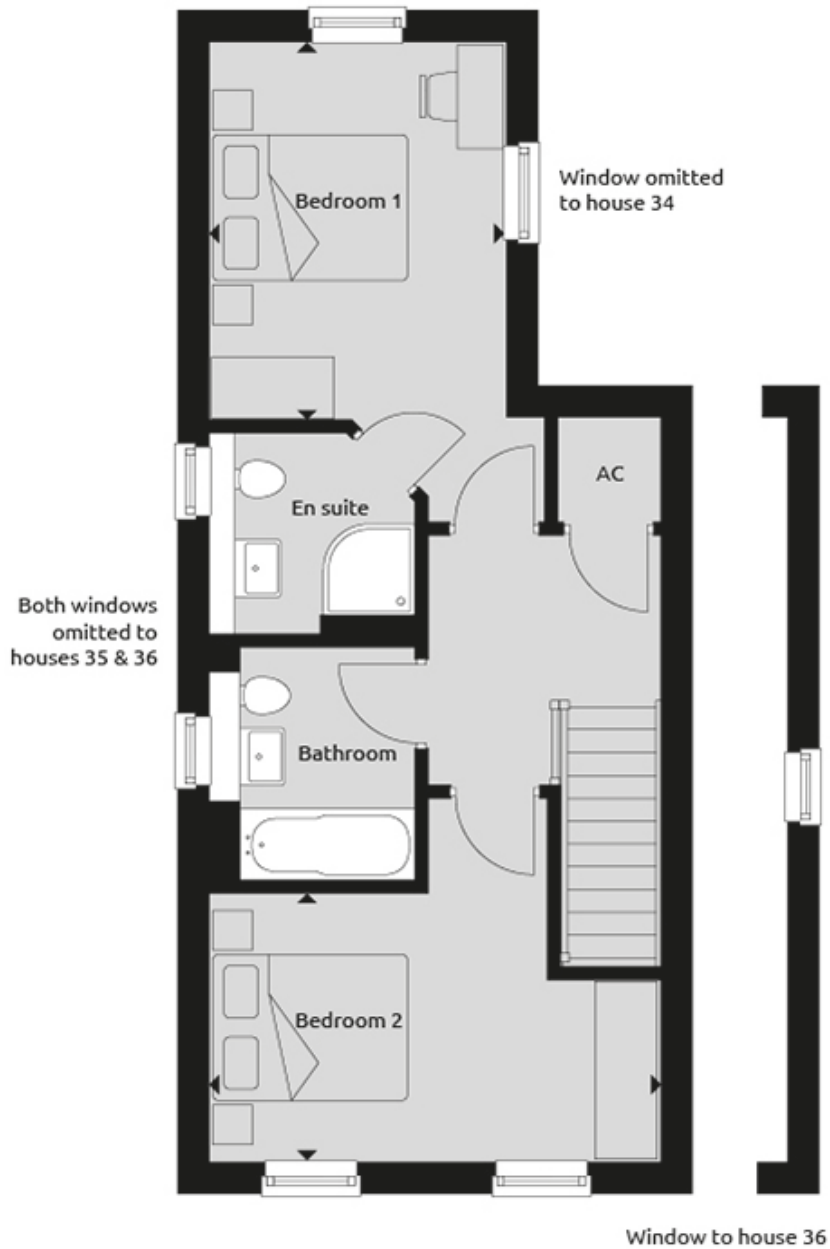
6.22m x 4.37m (20' 05" x 14' 04")

Key

CLASSIC SPECIFICATION

* Some plots may be handed - speak to a Sales Advisor for details.

First Floor



Bedroom 1:

3.71m x 2.87m (12' 02" x 9' 05")

Bedroom 2:

4.37m x 2.62m (14' 04" x 8' 07")

Key

CLASSIC SPECIFICATION

* Some plots may be handed - speak to a Sales Advisor for details.