

## Floor plans

### Ground Floor



#### Living Room:

6.60m x 3.35m (21' 08" x 11' 00")

#### Kitchen:

3.53m x 3.43m (11' 07" x 11' 03")

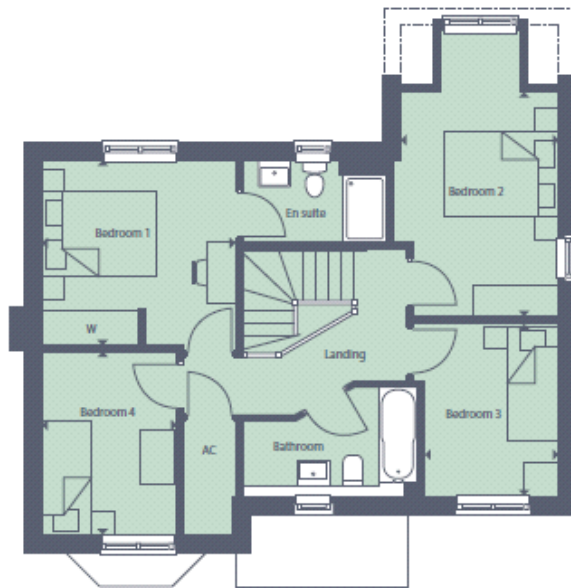
#### Dining/Family Area:

4.75m x 3.43m (15' 07" x 11' 03")

#### Key

A/C - Airing Cupboard C - Cupboard W - Wardrobe M - Maximum Dimension

## First Floor



### Bedroom 1:

3.38m x 3.25m (11' 01" x 10' 08")

### Bedroom 2:

3.94m x 2.77m (12' 11" x 9' 01")

### Bedroom 3:

3.05m x 2.34m (10' 00" x 7' 08")

### Bedroom 4:

3.23m x 2.36m (10' 07" x 7' 09")

### Key

A/C - Airing Cupboard C - Cupboard W - Wardrobe  $\hat{C}$  - Maximum Dimension