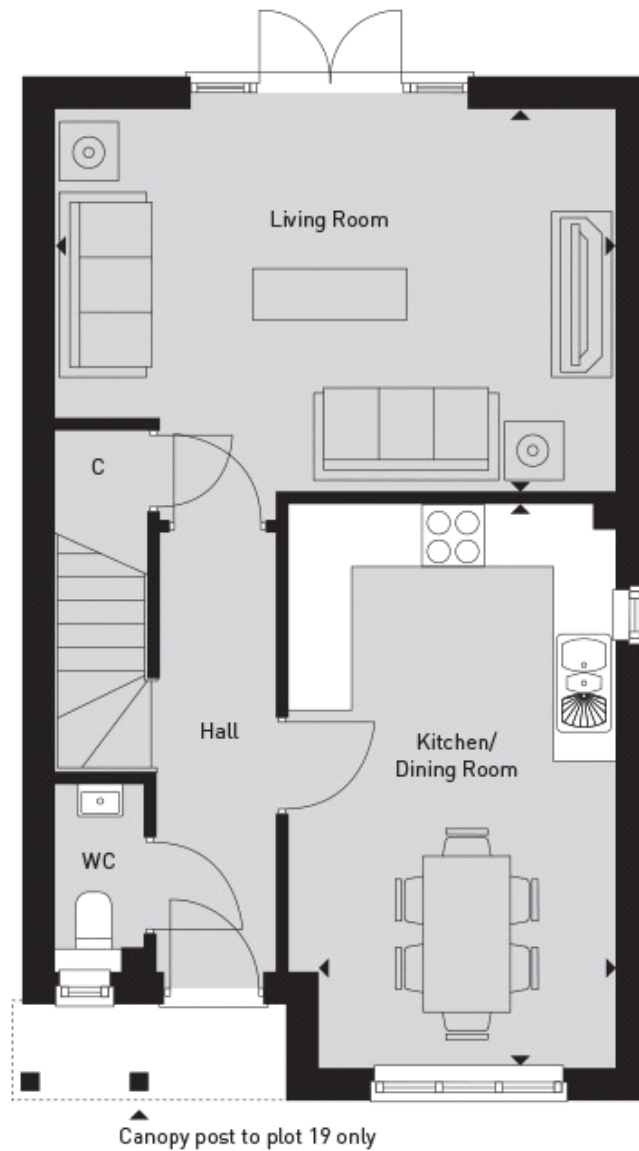


## Floor plans

### Ground floor



#### **Kitchen/Dining Room:**

5.54m x 2.87m (18' 02" x 9' 05")

#### **Living Room:**

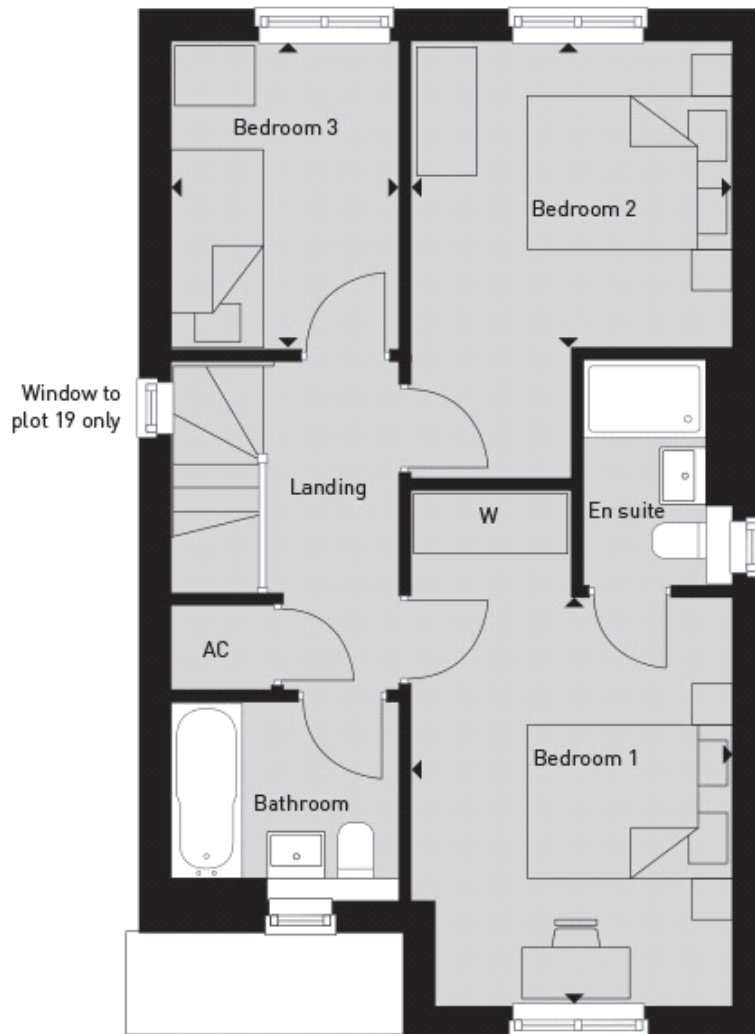
5.46m x 3.71m (17' 11" x 12' 02")

#### **Key**

A/C - Airing Cupboard C - Cupboard W - Wardrobe  $\hat{=}$  - Maximum Dimension

Plots 3, 46, 53, 55 & 71 are handed to floor plan shown

## First Floor



### Bedroom 1:

3.99m x 3.12m (13' 01" x 10' 03")

### Bedroom 2:

3.12m x 2.100m (10' 03" x 9' 10")

### Bedroom 3:

3.02m x 2.24m (9' 11" x 7' 04")

### Key

A/C - Airing Cupboard C - Cupboard W - Wardrobe  $\hat{C}$  - Maximum Dimension

Plots 3, 46, 53, 55 & 71 are handed to floor plan shown