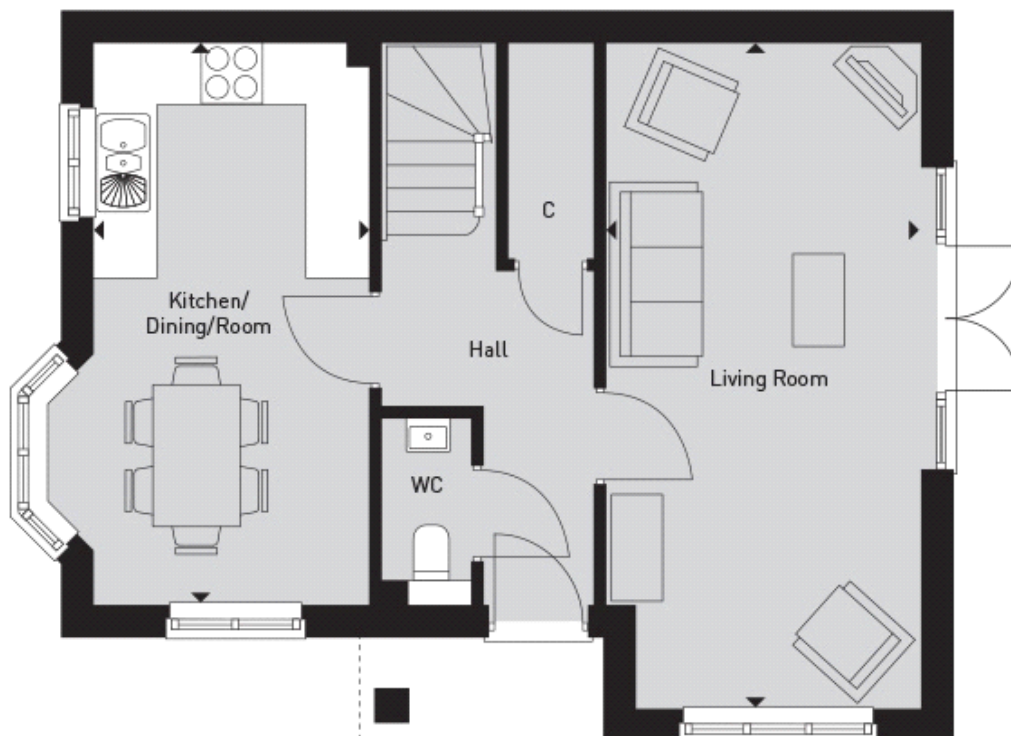


## Floor plans

### Ground Floor



#### **Kitchen/Dining Room:**

5.46m x 2.67m (17' 11" x 8' 09")

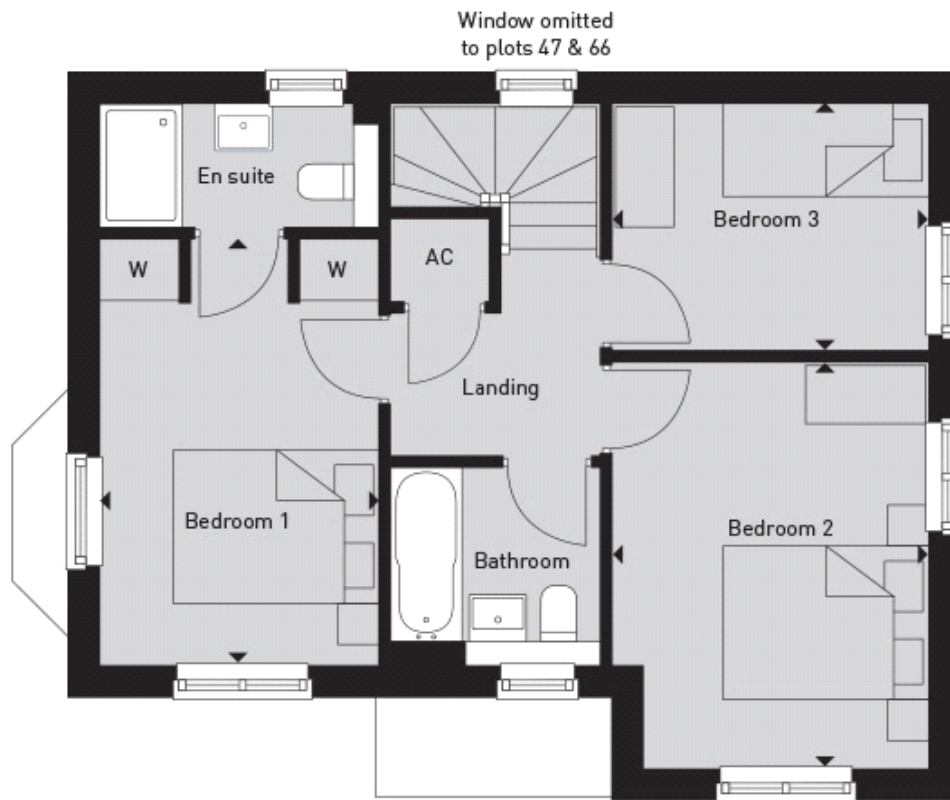
#### **Living Room:**

6.48m x 3.05m (21' 03" x 10' 00")

#### **Key**

⌘ - Airing Cupboard C - Cupboard W - Wardrobe ⌘ - Maximum Dimension

## First Floor



### Bedroom 1:

4.14m x 2.72m (13' 07" x 8' 11")

### Bedroom 2:

3.96m x 3.07m (13' 00" x 10' 01")

### Bedroom 3:

3.07m x 2.41m (10' 01" x 7' 11")

### Key

W - Wardrobe AC - Airing Cupboard C - Cupboard - Maximum Dimension