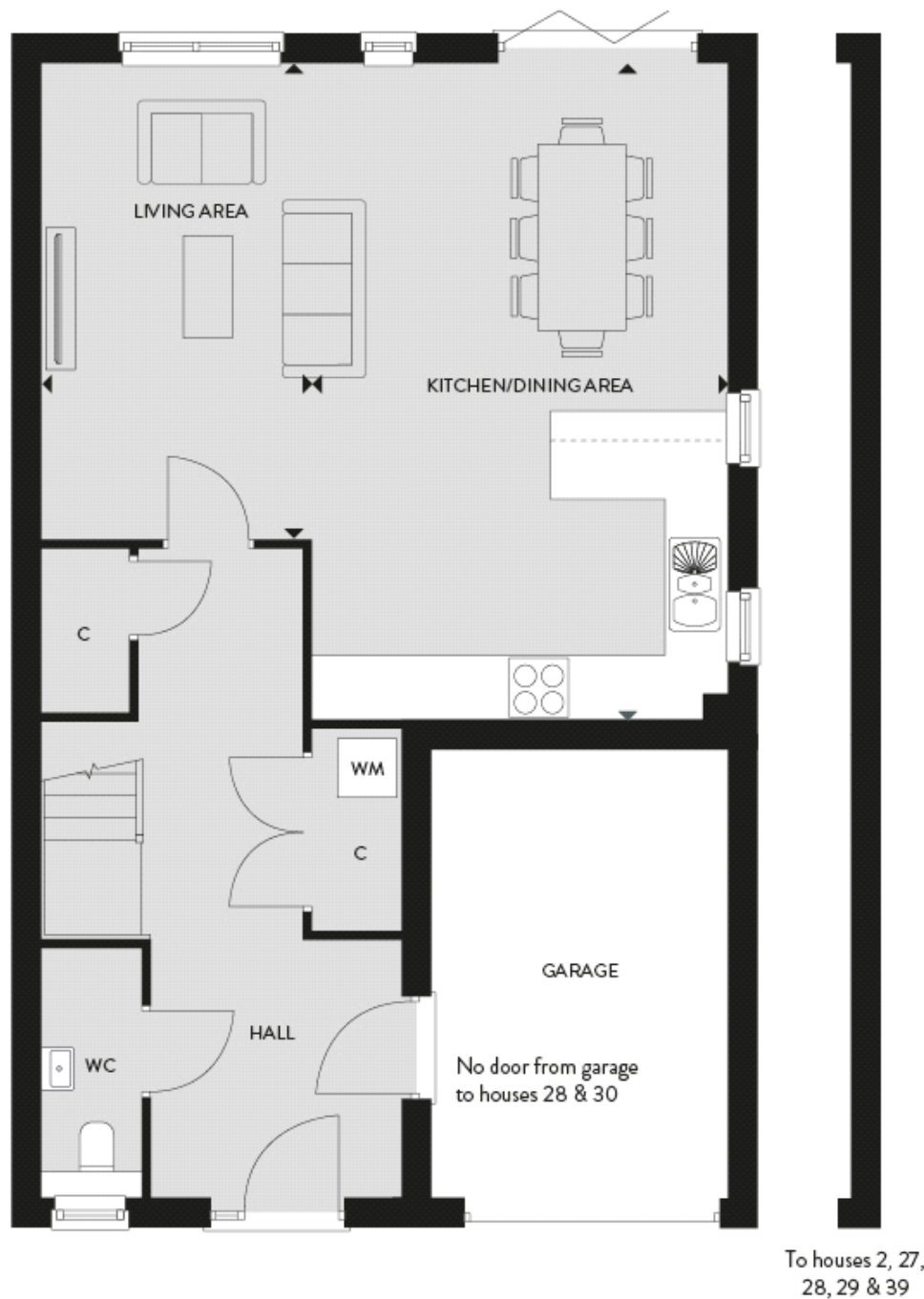


## Floor plans

### Ground Floor



#### Living Area:

4.55m x 3.84m (14' 11" x 12' 07")

#### Kitchen/Dining Room:

6.68m x 4.22m (21' 11" x 13' 10")

#### Key

W- Wardrobe

C-Cupboard

AC- Airing Cupboard

--- Reduced Head Height

Premier Plus Specification

## First Floor



To houses 2, 27,  
28, 29 & 39

### Bedroom 1:

5.16m x 3.73m (16' 11" x 12' 03")

### Bedroom 2:

3.81m x 3.10m (12' 06" x 10' 02")

### Bedroom 3:

4.80m x 3.73m (15' 09" x 12' 03")

### Bedroom 4:

3.51m x 3.10m (11' 06" x 10' 02")

### Key

W- Wardrobe

C-Cupboard

AC- Airing Cupboard

--- Reduced Head Height

Premier Plus Specification