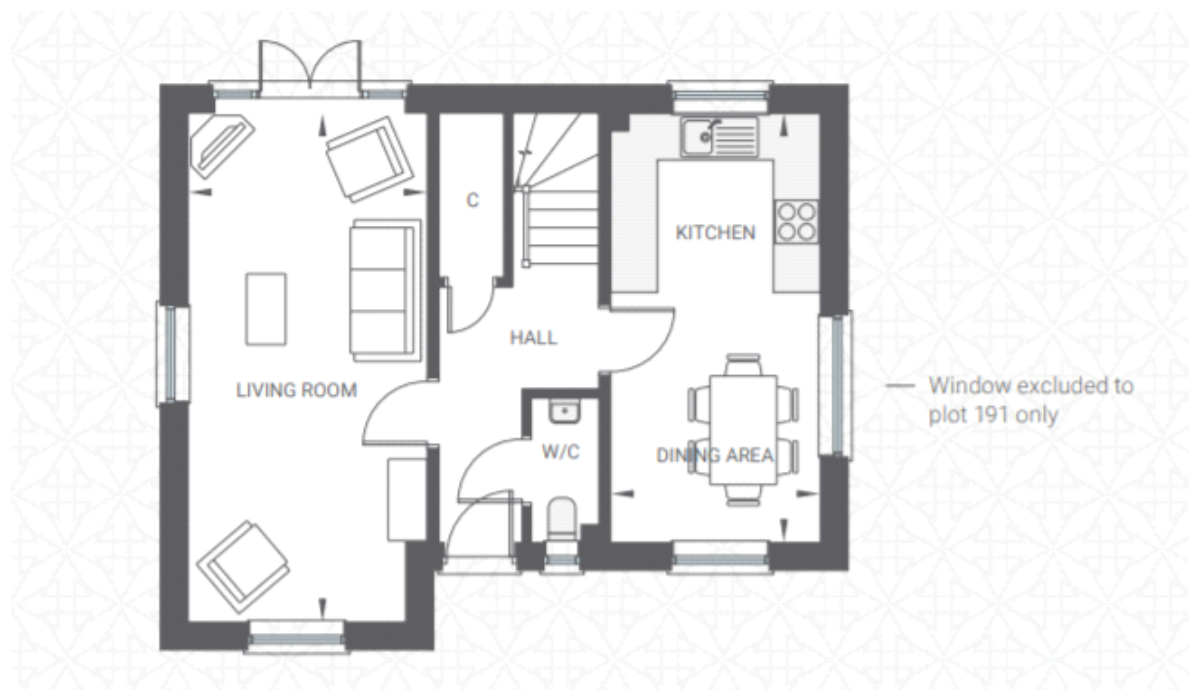


Floor plans

Ground Floor



Living Room:

6.48m x 3.05m (21' 03" x 10' 00")

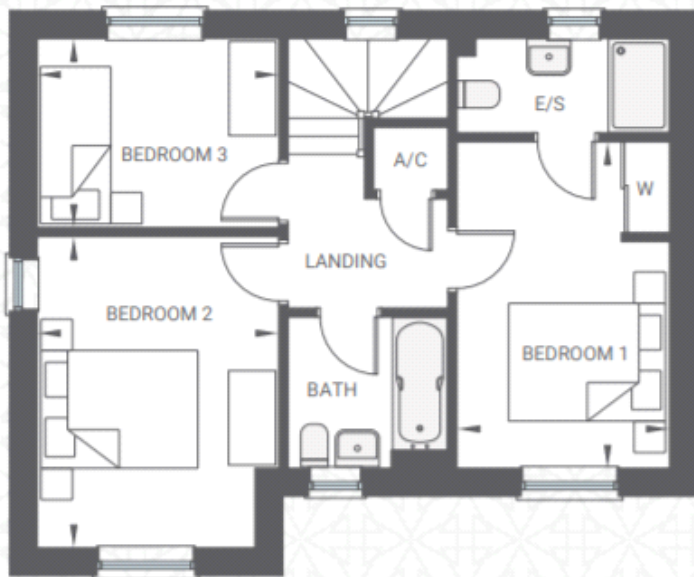
Kitchen/Dining Area:

5.21m x 2.67m (17' 01" x 8' 09")

Key

C: CUPBOARD W: WARDROBE E/S: EN SUITE A/C: AIRING CUPBOARD

First Floor



Bedroom 1:

4.17m x 2.72m (13' 08" x 8' 11")

Bedroom 2:

3.96m x 3.07m (13' 00" x 10' 01")

Bedroom 3:

3.07m x 2.41m (10' 01" x 7' 11")

Key

C: CUPBOARD W: WARDROBE E/S: EN SUITE A/C: AIRING CUPBOARD