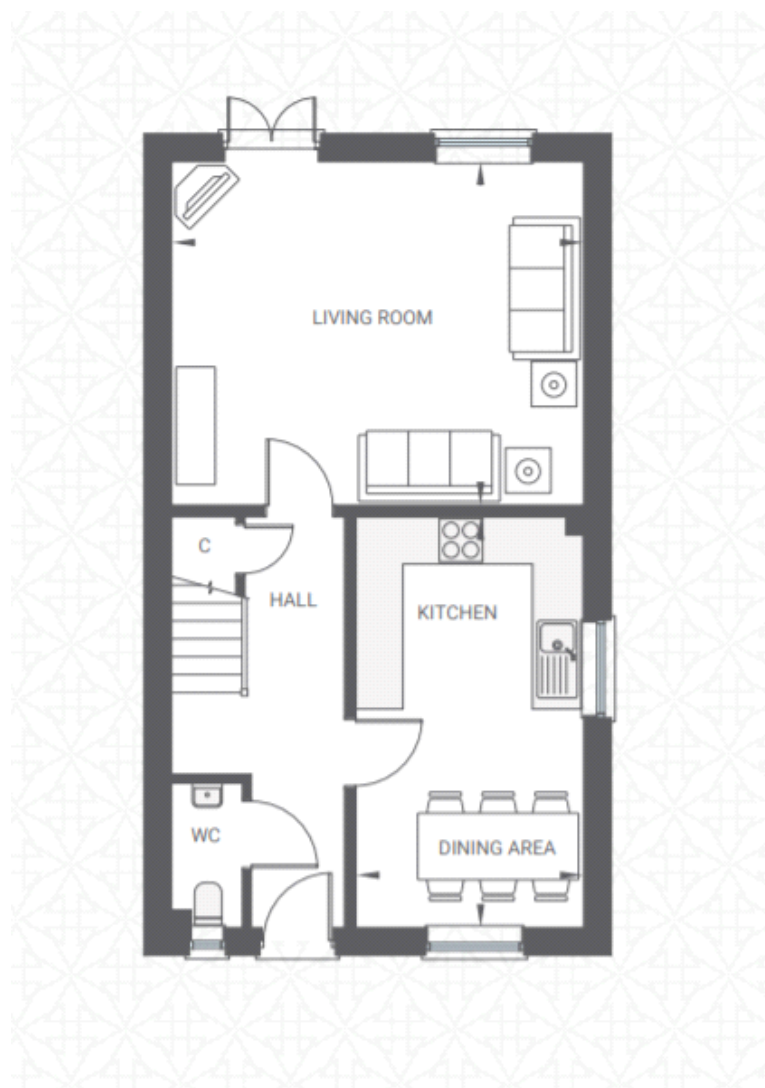


Floor plans

Ground Floor



Living Room:

5.26m x 4.37m (17' 03" x 14' 04")

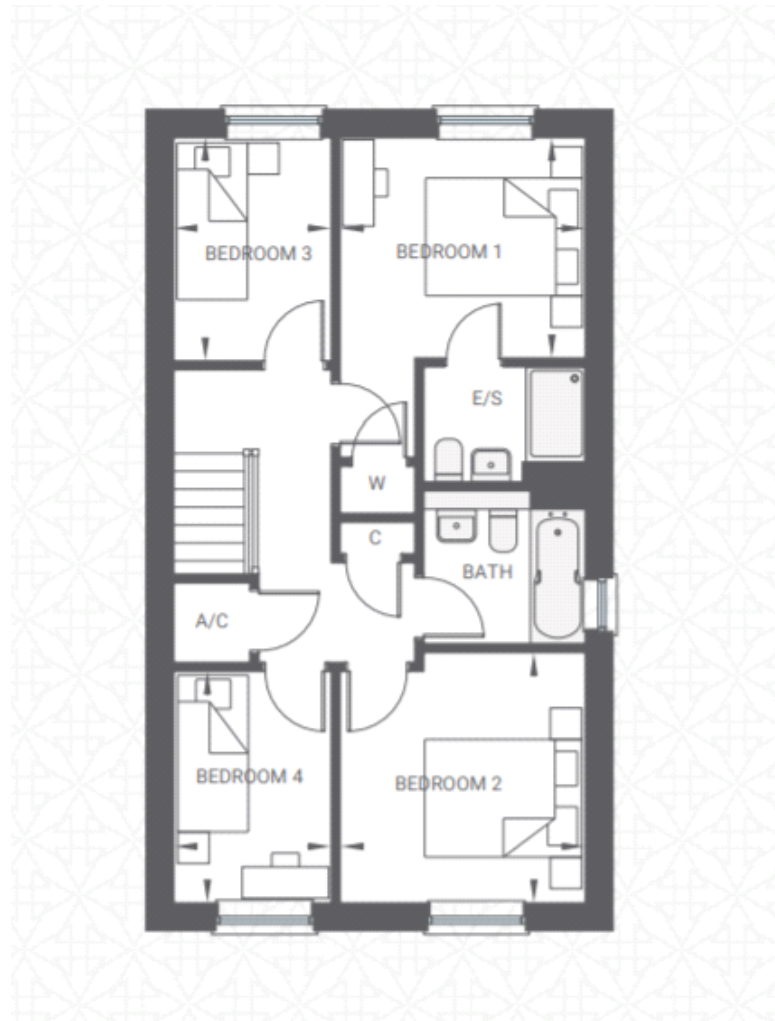
Kitchen/Dining Area:

5.23m x 2.90m (17' 02" x 9' 06")

Key

W = Wardrobe C = Cupboard AC = Airing Cupboard M = Max Dimension

First Floor



Bedroom 1:

3.12m x 2.82m (10' 03" x 9' 03")

Bedroom 2:

3.20m x 3.12m (10' 06" x 10' 03")

Bedroom 3:

2.90m x 2.01m (9' 06" x 6' 07")

Bedroom 4:

2.95m x 2.01m (9' 08" x 6' 07")

Key

W = Wardrobe C = Cupboard AC = Airing Cupboard M = Max Dimension