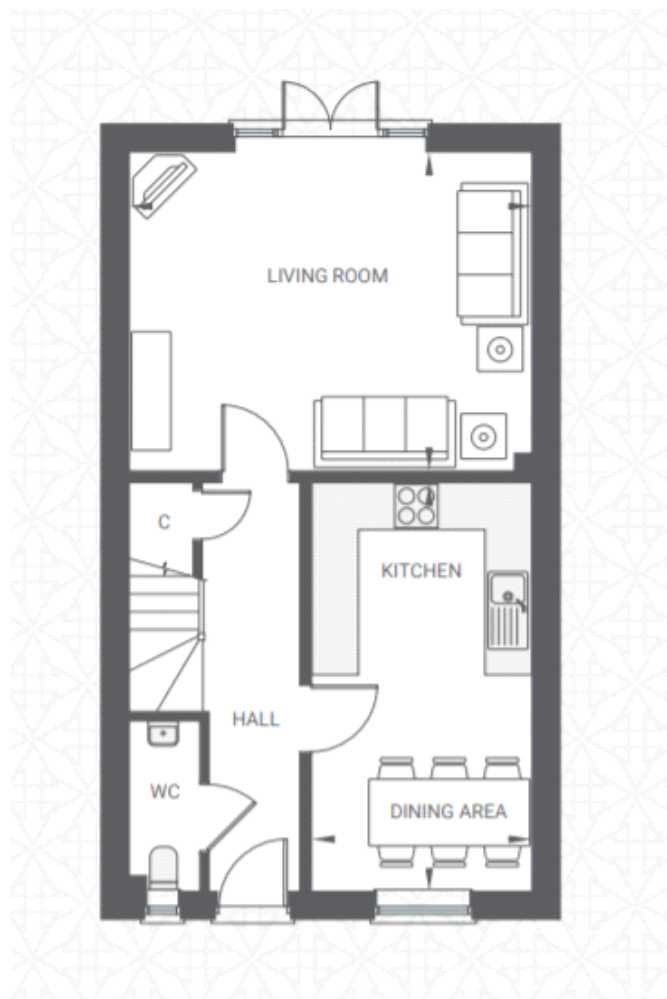


## Floor plans

### Ground Floor



#### Living Room:

5.13m x 4.04m (16' 10" x 13' 03")

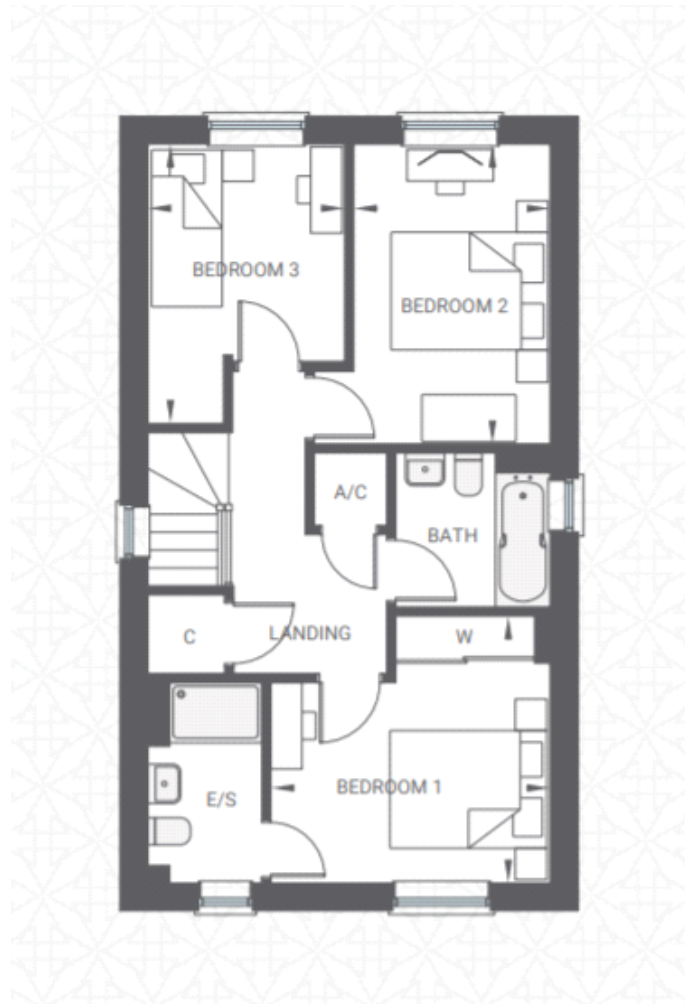
#### Kitchen/Dining Area:

5.21m x 2.82m (17' 01" x 9' 03")

#### Key

W = Wardrobe C = Cupboard AC = Airing Cupboard M = Max Dimension

## First Floor



### Bedroom 1:

3.56m x 3.40m (11' 08" x 11' 02")

### Bedroom 2:

3.81m x 2.51m (12' 06" x 8' 03")

### Bedroom 3:

3.56m x 2.51m (11' 08" x 8' 03")

### Key

W = Wardrobe C = Cupboard AC = Airing Cupboard = Max Dimension