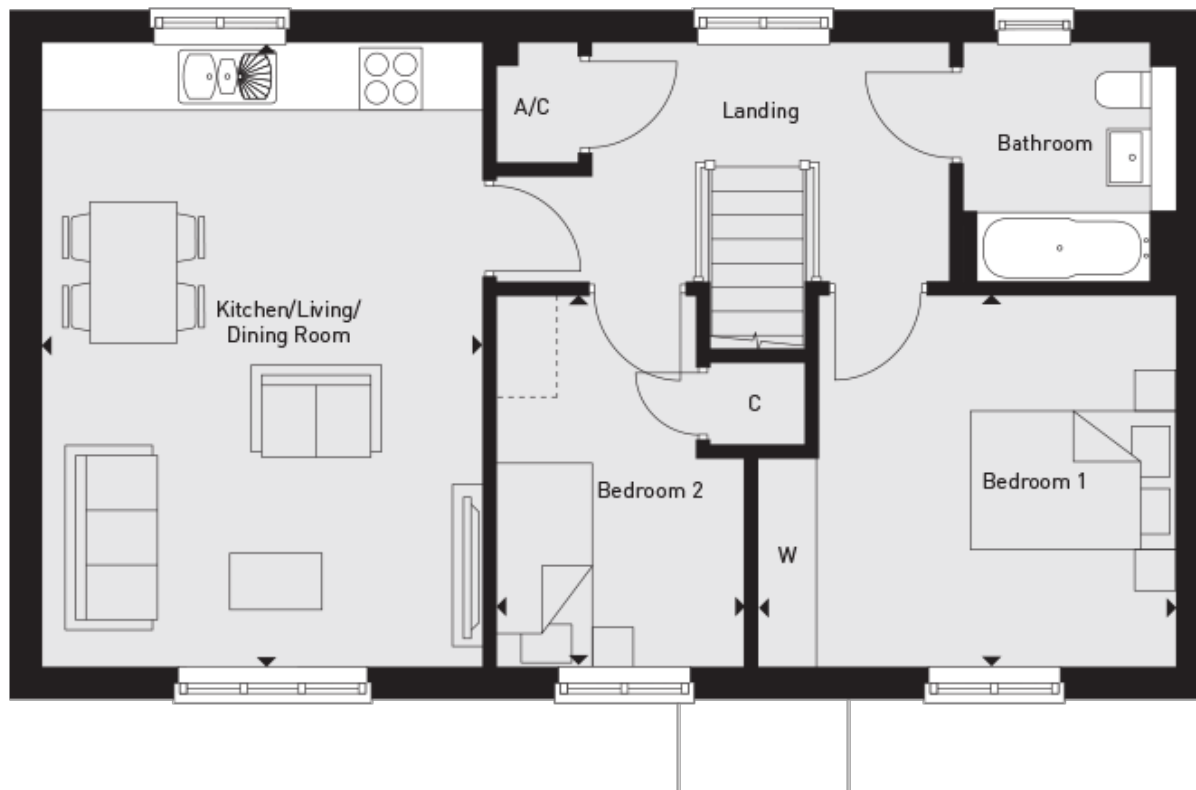


## Floor plans

### First Floor



**Kitchen/Living/dining Room:**

4.32m x 6.10m (14' 02" x 20' 00")

**Bedroom 1:**

4.06m x 3.66m (13' 04" x 12' 00")

**Bedroom 2:**

2.44m x 3.66m (8' 00" x 12' 00")

**Key**

AC Airing Cupboard

C Cupboard

## W Wardrobe

Digital illustration indicative only.