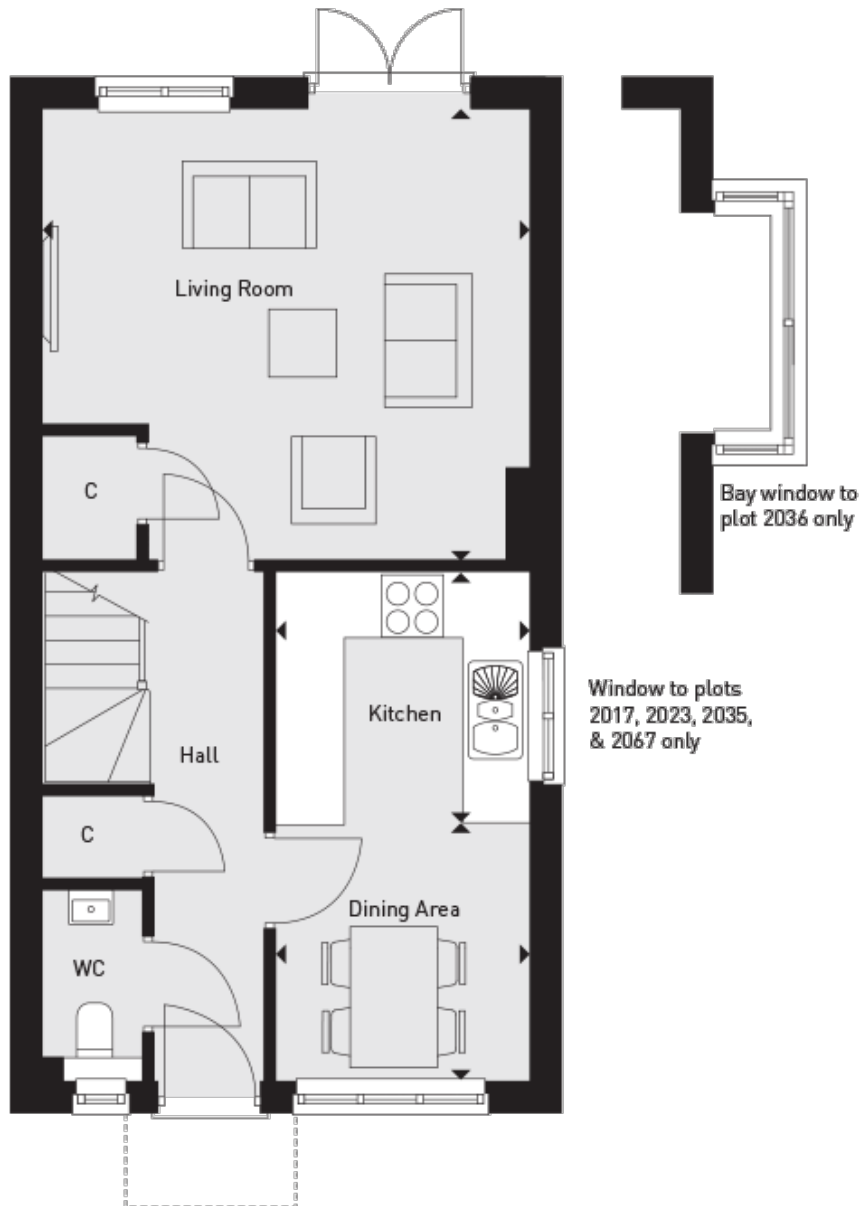


## Floor plans

### Ground Floor



#### Living Room:

4.75m x 4.39m (15' 07" x 14' 05")

#### Kitchen:

2.46m x 2.46m (8' 01" x 8' 01")

#### Dining Area :

2.46m x 2.51m (8' 01" x 8' 03")

#### Key

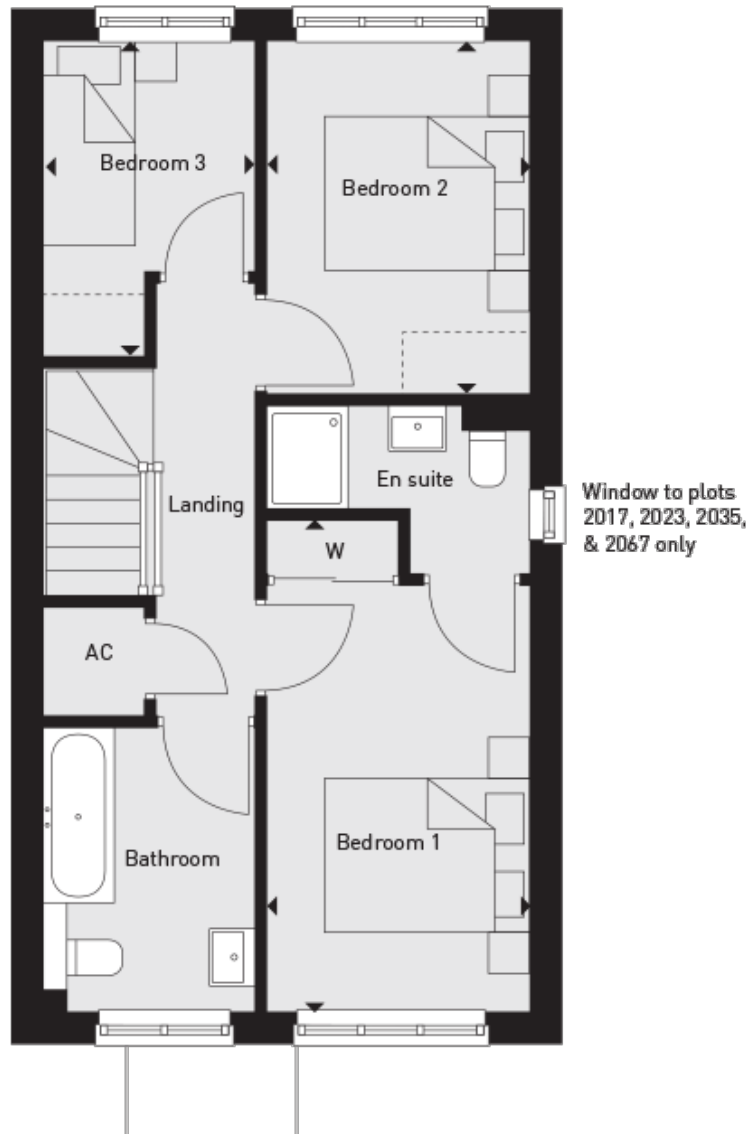
AC Airing Cupboard

C Cupboard

## W Wardrobe

Digital illustration indicative only.

## First Floor



### Bedroom 1:

2.57m x 4.80m (8' 05" x 15' 09")

### Bedroom 2:

2.57m x 3.45m (8' 05" x 11' 04")

### Bedroom 3:

2.06m x 3.07m (6' 09" x 10' 01")

### Key

AC Airing Cupboard

C Cupboard

W Wardrobe

Digital illustration indicative only.

