

## Floor plans

### Ground floor



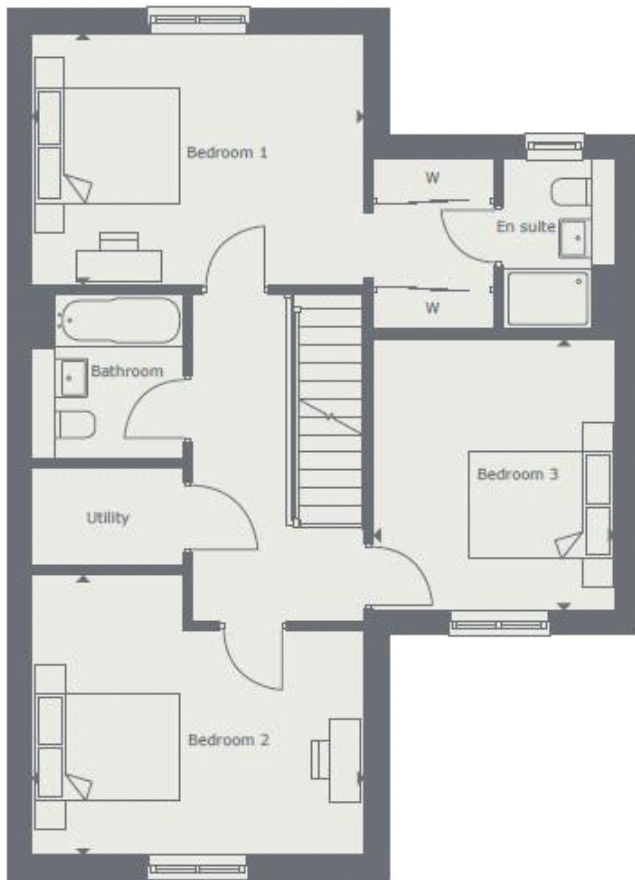
#### **Living room:**

4.37m x 3.61m (14' 04" x 11' 10")

#### **Kitchen/Dining:**

7.16m x 3.35m (23' 06" x 11' 00")

## First floor



### Bedroom 1:

4.37m x 3.30m (14' 04" x 10' 10")

### Bedroom 2:

4.37m x 3.66m (14' 04" x 12' 00")

### Bedroom 3:

3.58m x 3.20m (11' 09" x 10' 06")