

Floor plans

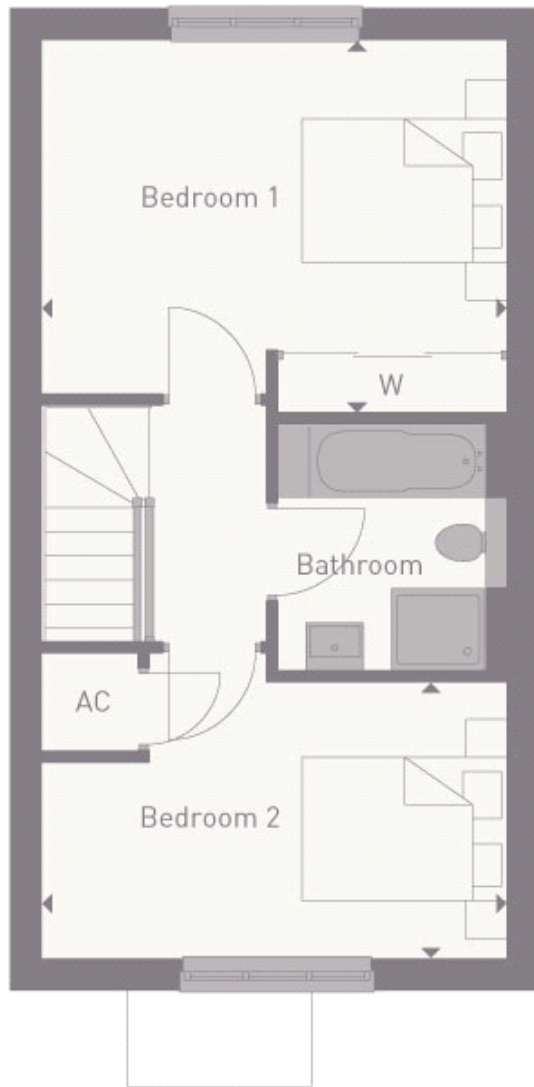
Ground Floor



Living/Dining room:
5.38m x 4.52m (17' 08" x 14' 10")

Kitchen:
3.58m x 2.18m (11' 09" x 7' 02")

First Floor



Bedroom 1:

4.52m x 3.66m (14' 10" x 12' 00")

Bedroom 2:

4.52m x 2.69m (14' 10" x 8' 10")