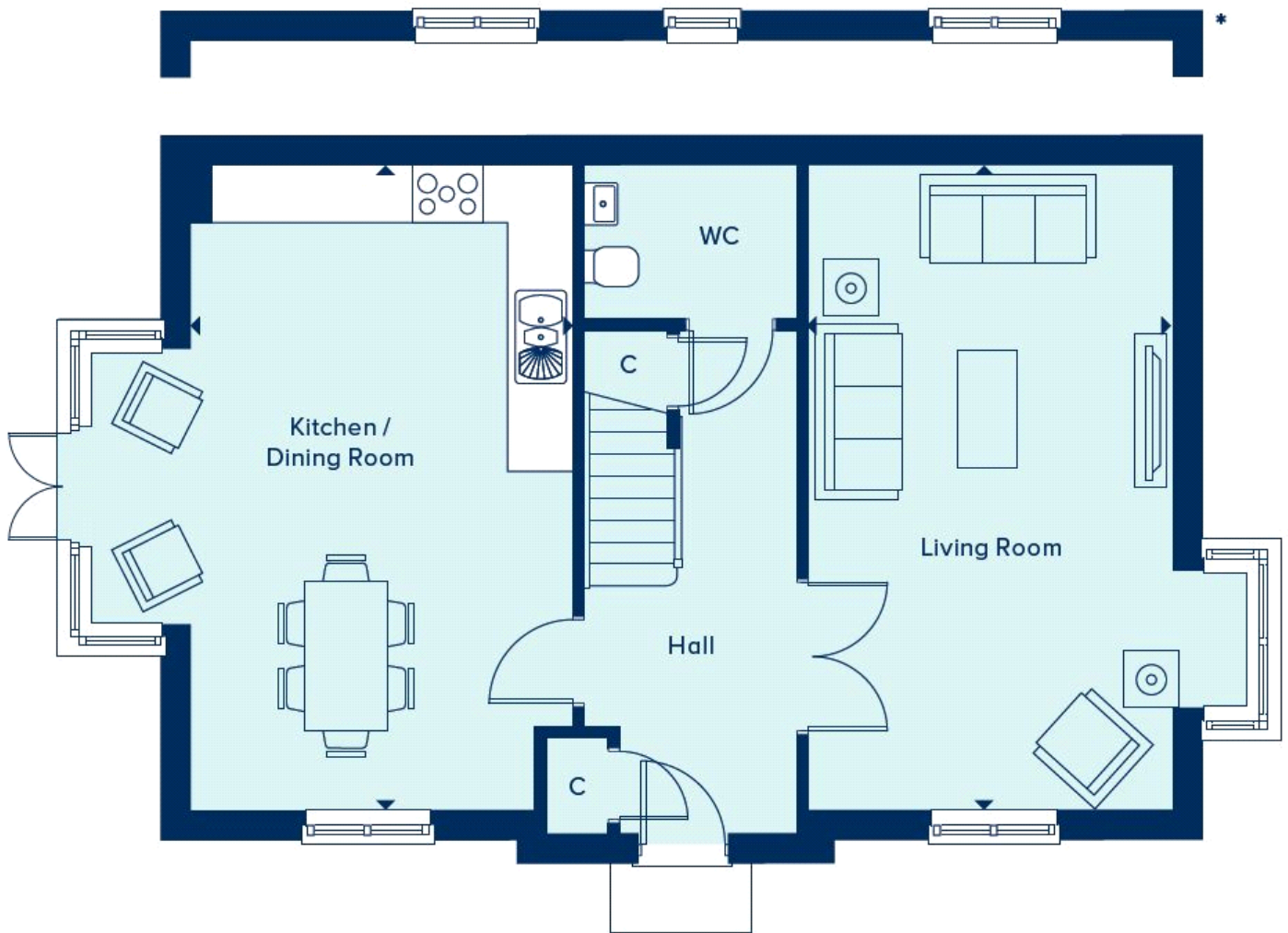


Floor plans

Ground Floor



Kitchen/Dining Room:

6.60m x 3.91m (21' 08" x 12' 10")

Living Room:

6.60m x 3.73m (21' 08" x 12' 03")

Key

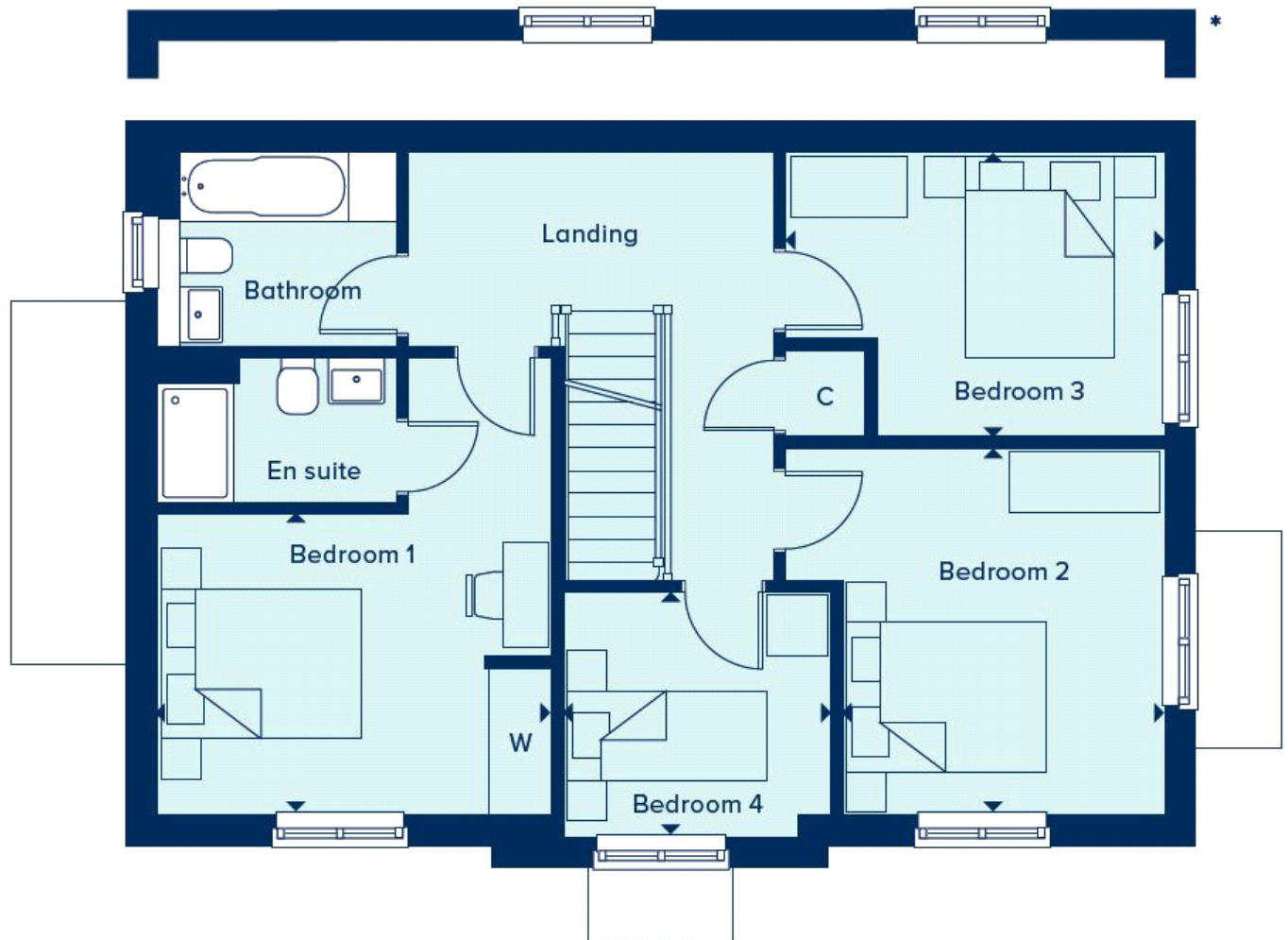
W Wardrobe

C Cupboard

AC Airing cupboard

⌂ Max dimension

First Floor



Bedroom 1:
3.94m x 2.100m (12' 11" x 9' 10")

Bedroom 2:
3.66m x 3.23m (12' 00" x 10' 07")

Bedroom 3:
3.81m x 2.84m (12' 06" x 9' 04")

Bedroom 4:
2.67m x 2.44m (8' 09" x 8' 00")

Key

W Wardrobe

C Cupboard

AC Airing cupboard

⊕ Max dimension

* Handed to floorplans shown