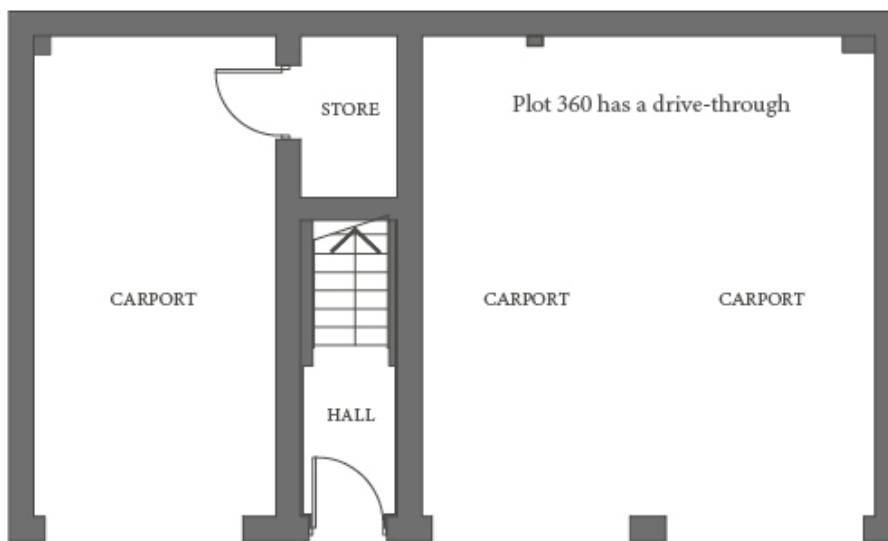
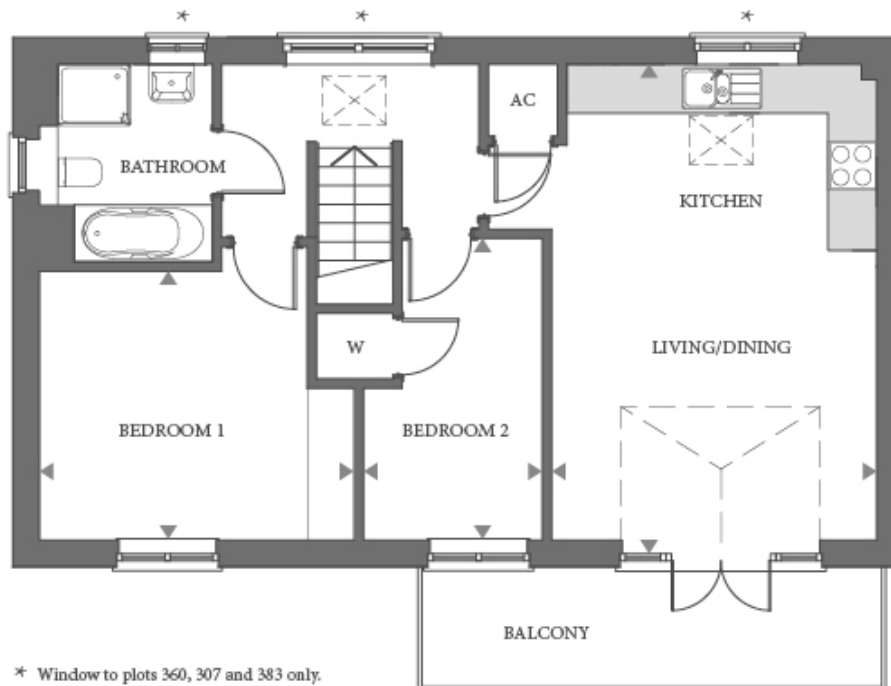


Floor plans

Ground Floor



First Floor



Kitchen/Living/Dining Room:

5.87m x 4.01m (19' 03" x 13' 02")

Bedroom 1:

3.89m x 3.30m (12' 09" x 10' 10")

Bedroom 2:

3.71m x 2.21m (12' 02" x 7' 03")

Key

* Window to plots 360, 307 and 383 only.

â€ Plots 281, 294, 297 and 391 are handed.

In plots 307 and 382, only the kitchen and balcony are handed.