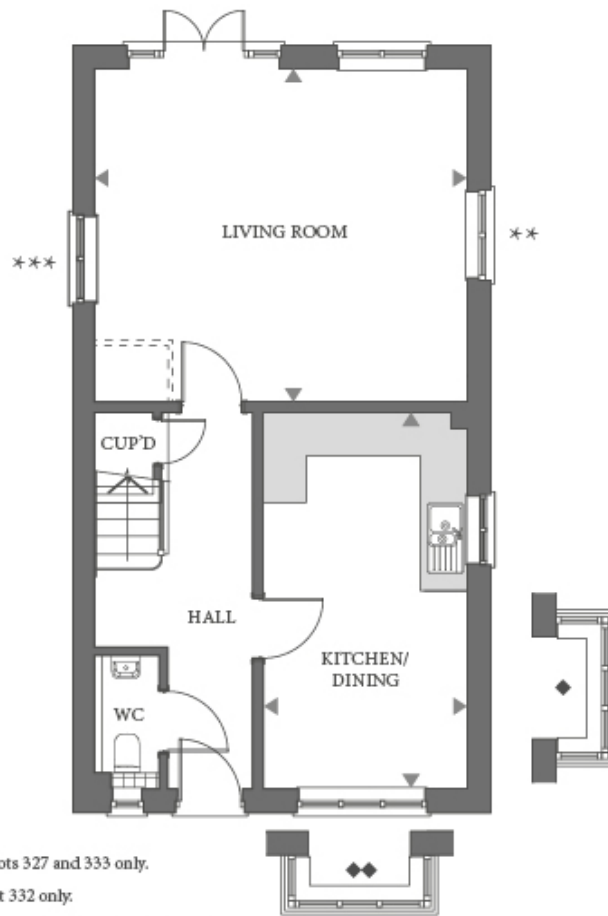


Floor plans

Ground Floor



- ** Windows to plots 327 and 333 only.
- *** Window to Plot 332 only.
- ◆ Window and bay window option for Plot 411.
- ◆◆ Bay window option for plots 325, 326, 327, 328, 410 and 411.

Living Room:

5.18m x 4.62m (17' 00" x 15' 02")

Kitchen/Dining:

5.23m x 2.84m (17' 02" x 9' 04")

Key

â€ Plots 328 and 334 are handed.

* Window options for Plot 411 only.

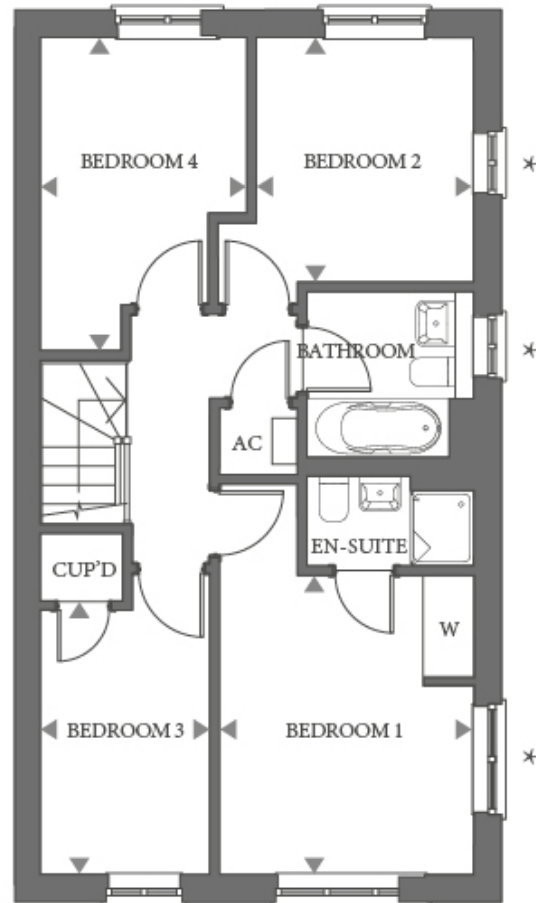
** Windows to plots 327 and 333 only.

*** Window to Plot 332 only.

Window and bay window option for Plot 411.

Bay window option for plots 325, 326, 327, 328, 410 and 411.

First Floor



* Window options for Plot 411 only.

Bedroom 1:

4.67m x 3.05m (15' 04" x 10' 00")

Bedroom 2:

2.92m x 2.59m (9' 07" x 8' 06")

Bedroom 3:

3.61m x 2.03m (11' 10" x 6' 08")

Bedroom 4:

3.76m x 2.46m (12' 04" x 8' 01")