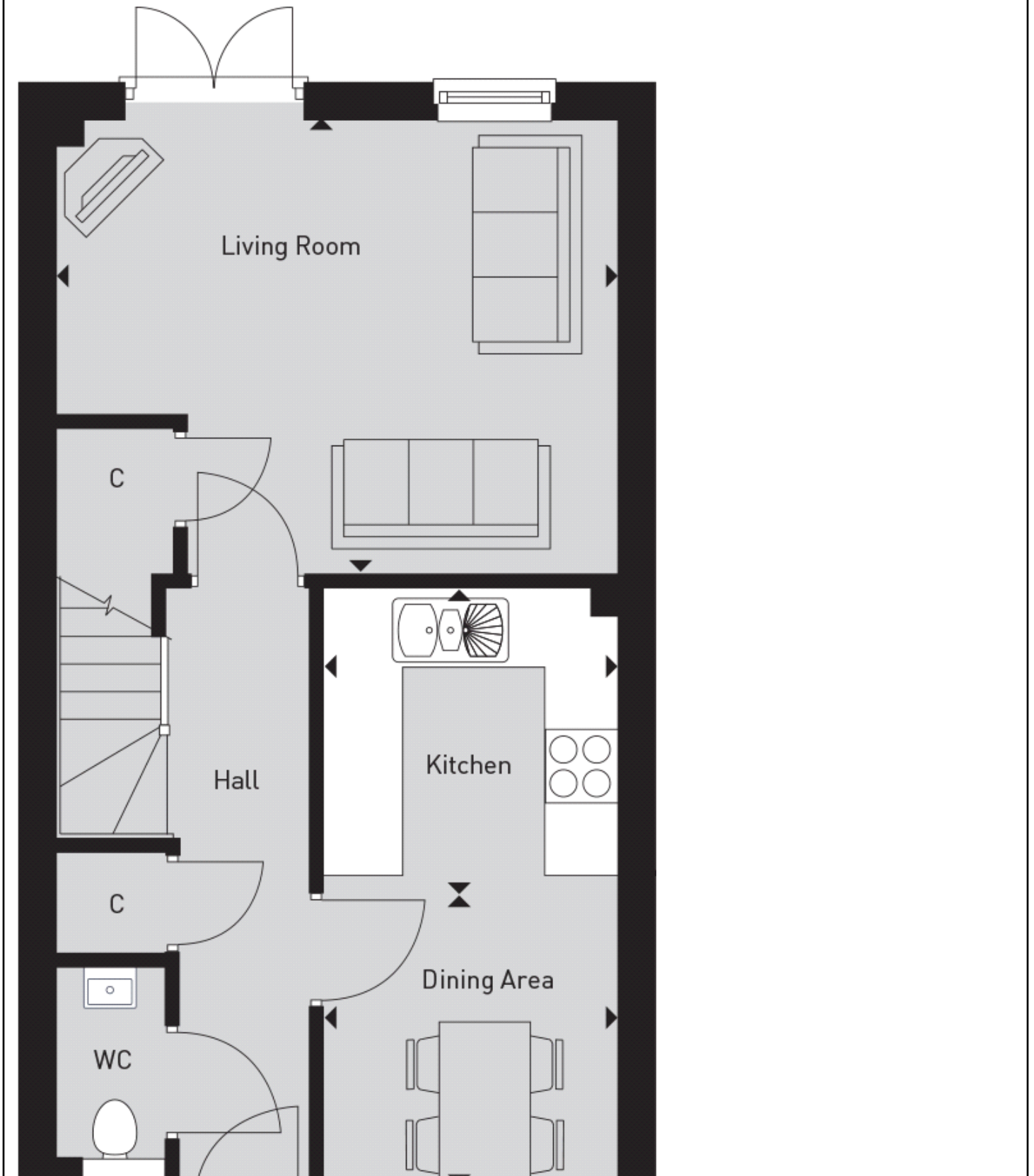


Floor plans

Ground Floor





Living Room:

4.62m x 3.73m (15' 02" x 12' 03")

Kitchen:

2.46m x 2.41m (8' 01" x 7' 11")

Dining Area:

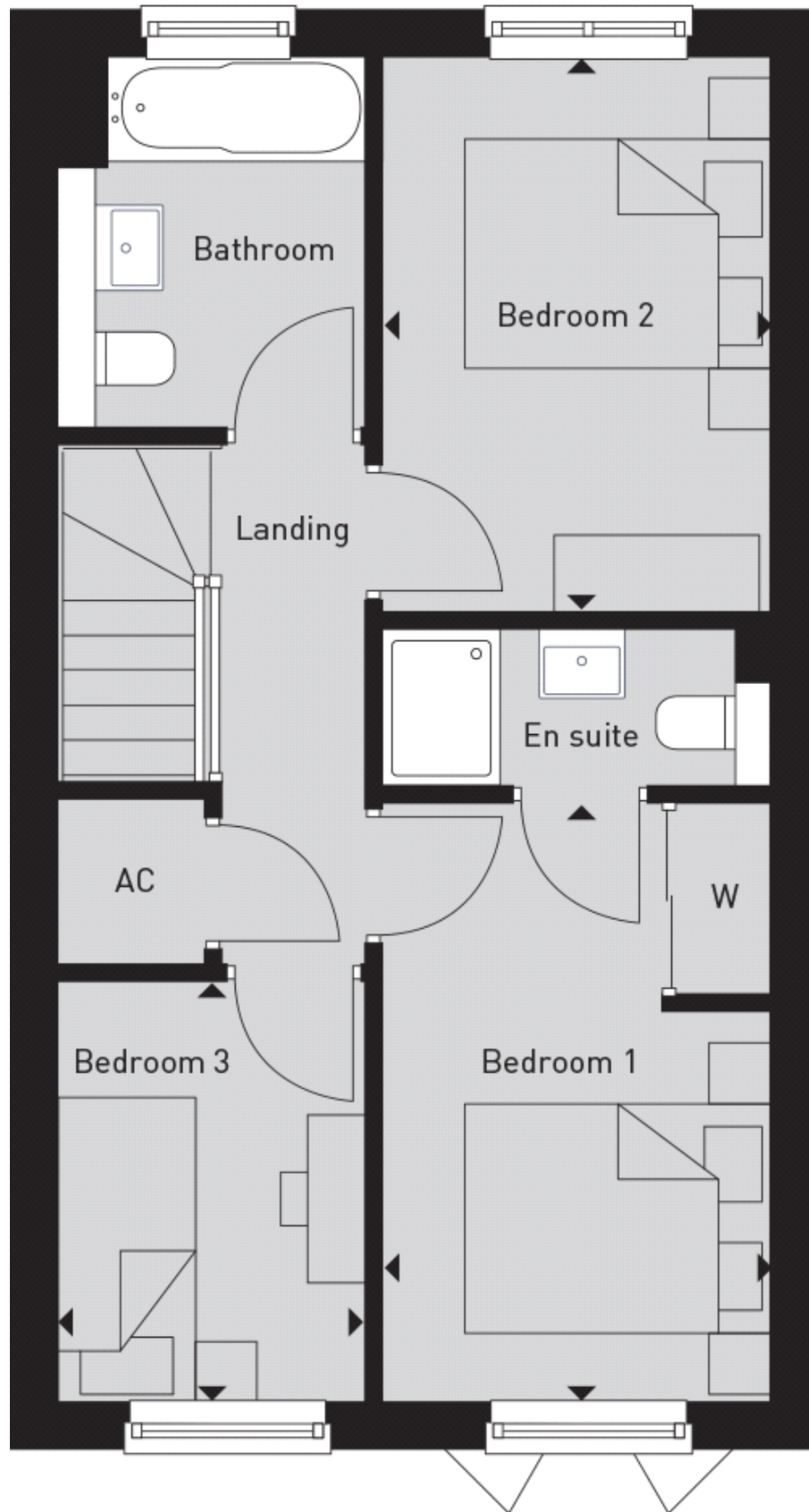
2.51m x 2.41m (8' 03" x 7' 11")

Key

C â€” Cupboard AC â€” Airing Cupboard W â€” Wardrobe â€” Maximum dimensions

Plots 138, 148, 162, 163, 178, 179, 312, 313, 328, 332, 335, 338, 343, 367 handed to floor plan shown

First Floor



Bedroom 1:

3.91m x 2.54m (12' 10" x 8' 04")

Bedroom 2:

3.63m x 2.54m (11' 11" x 8' 04")

Bedroom 3:

2.74m x 1.98m (9' 00" x 6' 06")

Key

C â€” Cupboard AC â€” Airing Cupboard W â€” Wardrobe â€” Maximum dimensions

Plots 138, 148, 162, 163, 178, 179, 312, 313, 328, 332, 335, 338, 343, 367 handed to floor plan shown