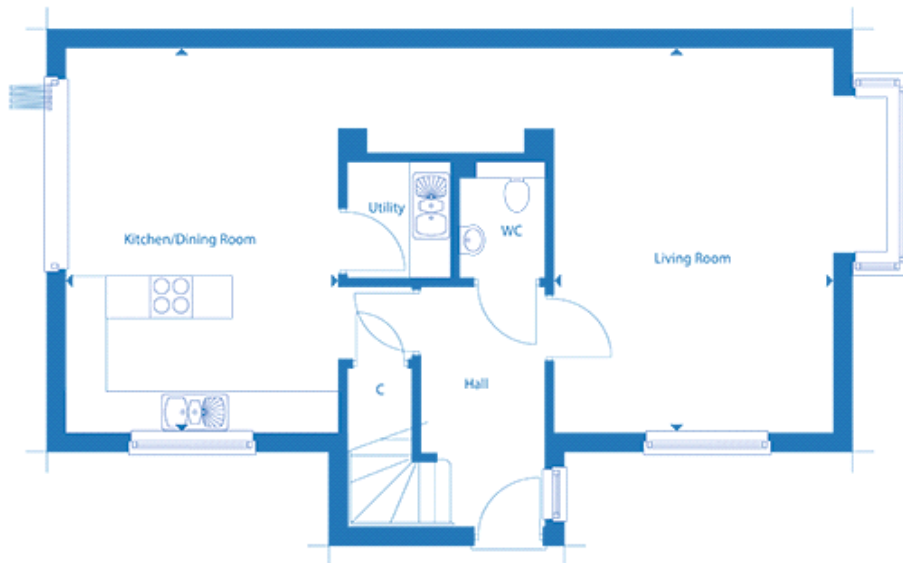


## Floor plans

### Ground Floor



#### Living Room :

5.54m x 4.01m (18' 02" x 13' 02")

#### Kitchen / Dining Room :

5.49m x 3.91m (18' 00" x 12' 10")

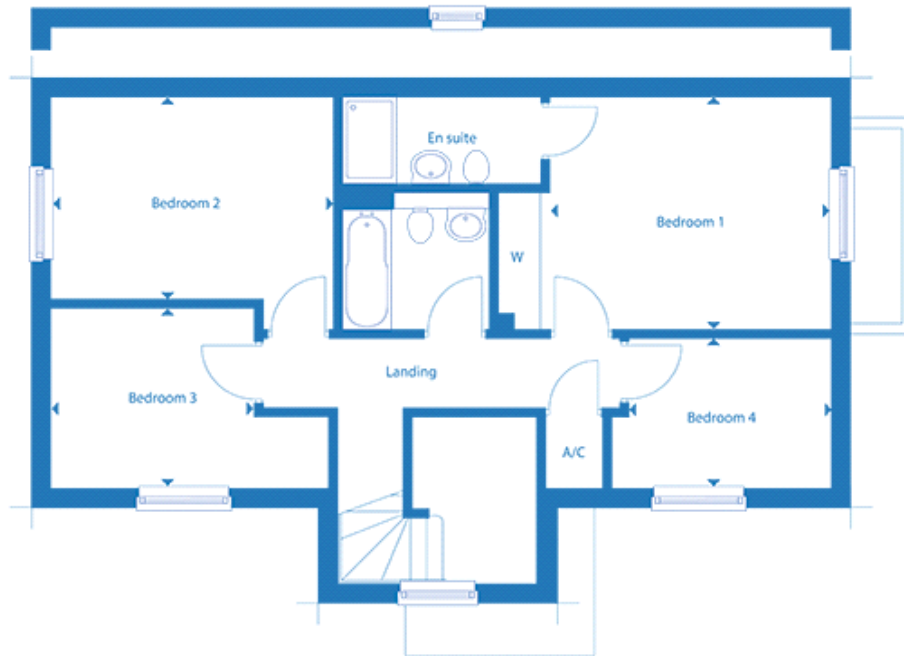
#### Key

C Cupboard

AC Airing Cupboard

W Wardrobe

## First Floor



### Bedroom 1:

4.72m x 3.28m (15' 06" x 10' 09")

### Bedroom 2:

3.99m x 2.84m (13' 01" x 9' 04")

### Bedroom 3:

3.94m x 2.57m (12' 11" x 8' 05")

### Bedroom 4:

3.05m x 2.13m (10' 02" x 7' 00")

### Key

C Cupboard

AC Airing Cupboard

W Wardrobe