

Floor plans

Ground Floor



Kitchen/Dining Room:

5.64m x 2.84m (18' 06" x 9' 04")

Living Room:

5.64m x 3.23m (18' 06" x 10' 07")

Key

Classic Specification

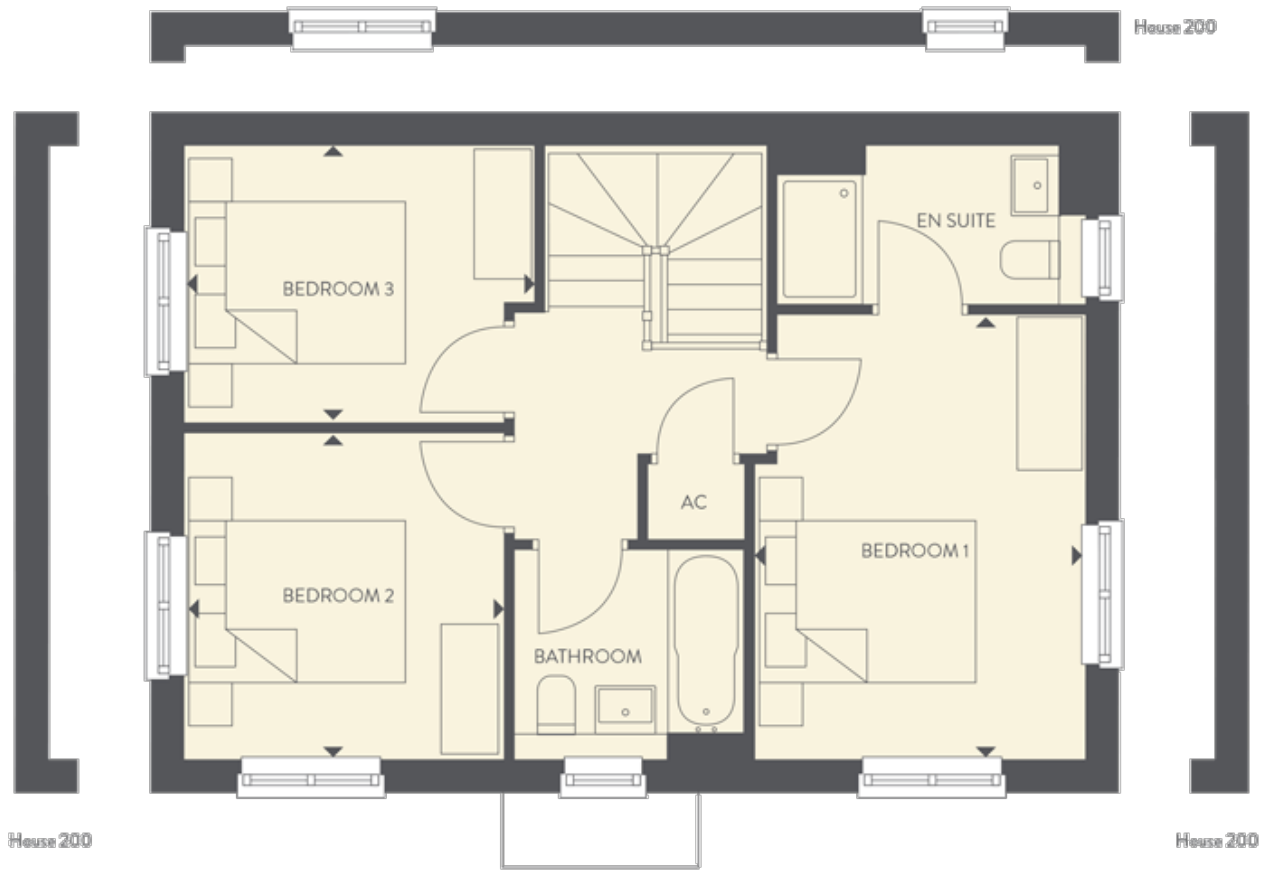
C Cupboard

AC Airing cupboard

⌘ Max dimension

*Handed to floorplans shown

First Floor



- Bedroom 1:**
4.09m x 3.05m (13' 05" x 10' 00")
- Bedroom 2:**
2.100m x 2.95m (9' 10" x 9' 08")
- Bedroom 3:**
3.23m x 2.51m (10' 07" x 8' 03")
- Key**

Classic Specification

C Cupboard

AC Airing cupboard

⊕ Max dimension

*Handed to floorplans shown