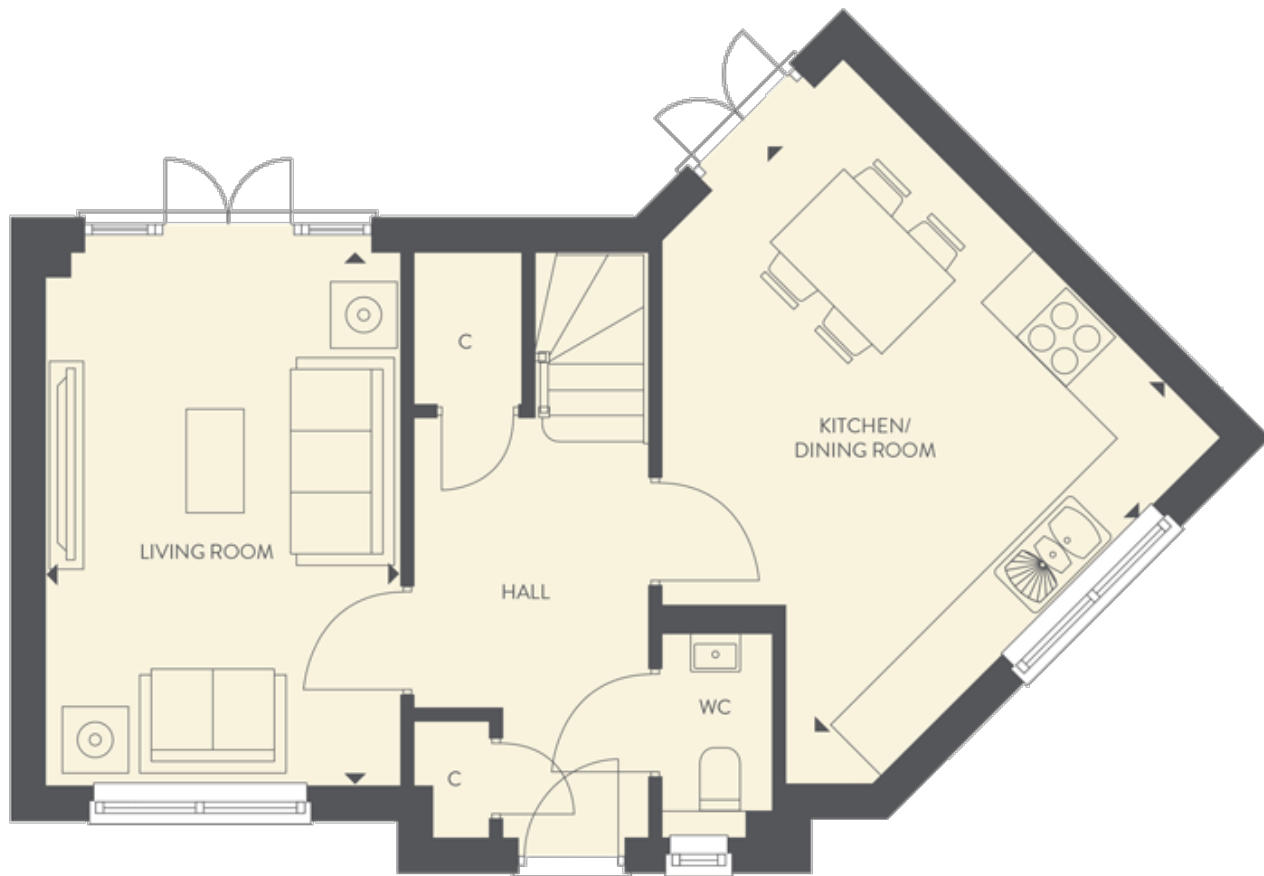


## Floor plans

### Ground Floor



#### Living Room:

4.62m x 3.07m (15' 02" x 10' 01")

#### Kitchen/Dining Room:

4.62m x 4.19m (15' 02" x 13' 09")

#### Key

Classic Specification

C Cupboard

AC Airing cupboard

⌘ Max dimension

\*Handed to floorplans shown

## First Floor



### Bedroom 1:

3.30m x 3.25m (10' 10" x 10' 08")

### Bedroom 2:

4.24m x 2.39m (13' 11" x 7' 10")

### Bedroom 3:

2.21m x 2.11m (7' 03" x 6' 11")

### Key

Classic Specification

C Cupboard

AC Airing cupboard

⊕ Max dimension

\*Handed to floorplans shown