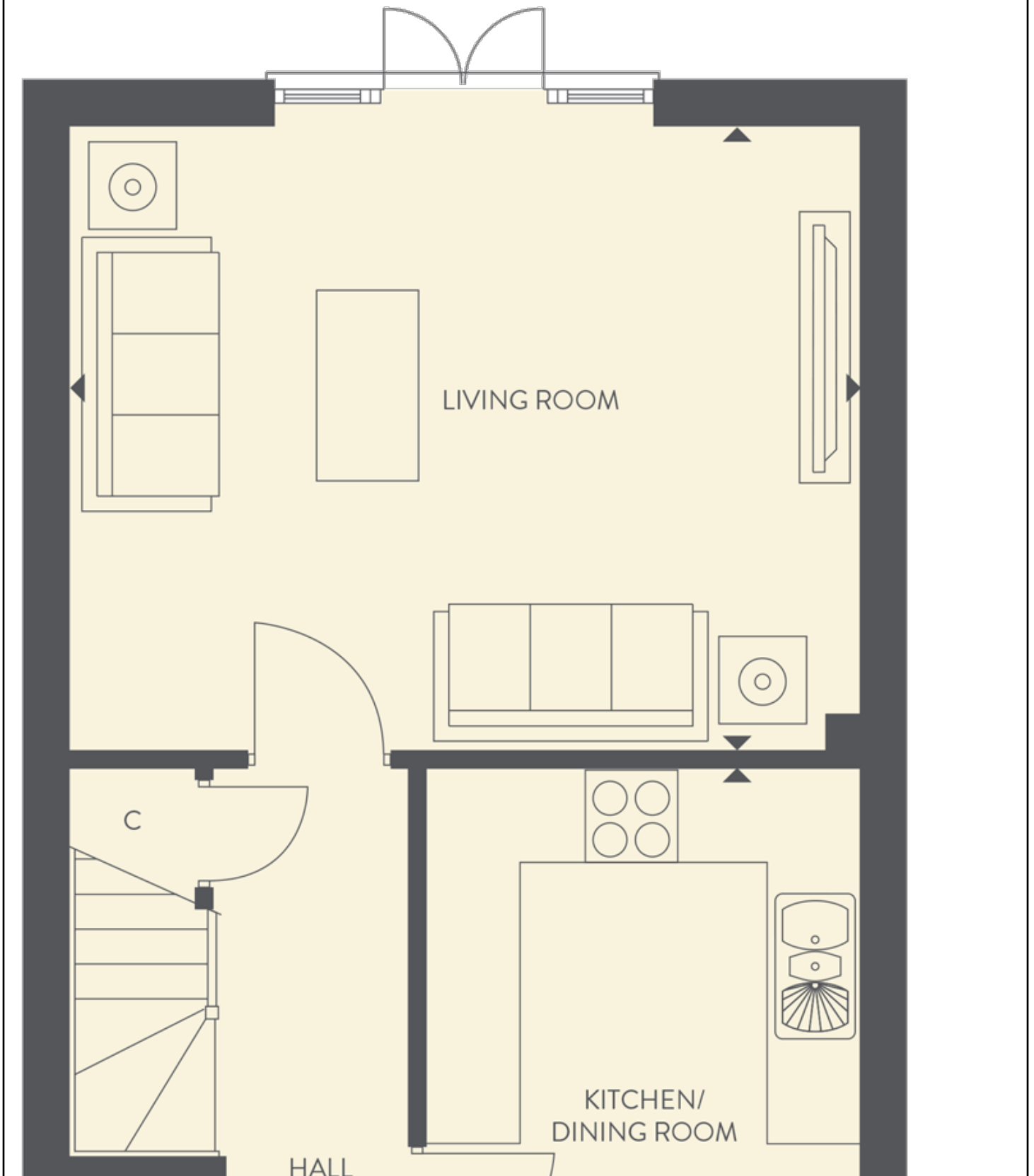
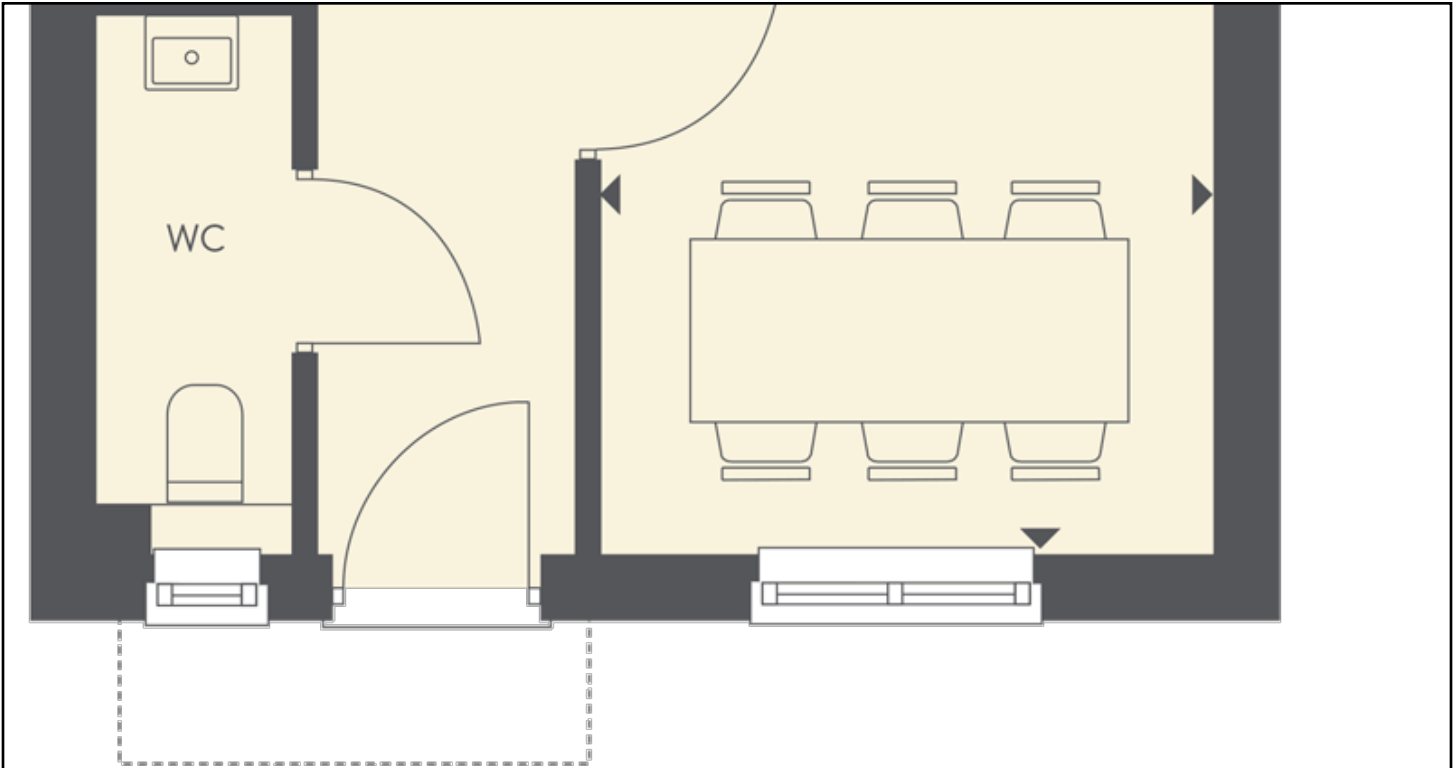


Floor plans

Ground Floor





Living Room:
 5.18m x 4.09m (17' 00" x 13' 05")

Kitchen/Dining Room:
 5.23m x 2.84m (17' 02" x 9' 04")

Key

Premier Specification

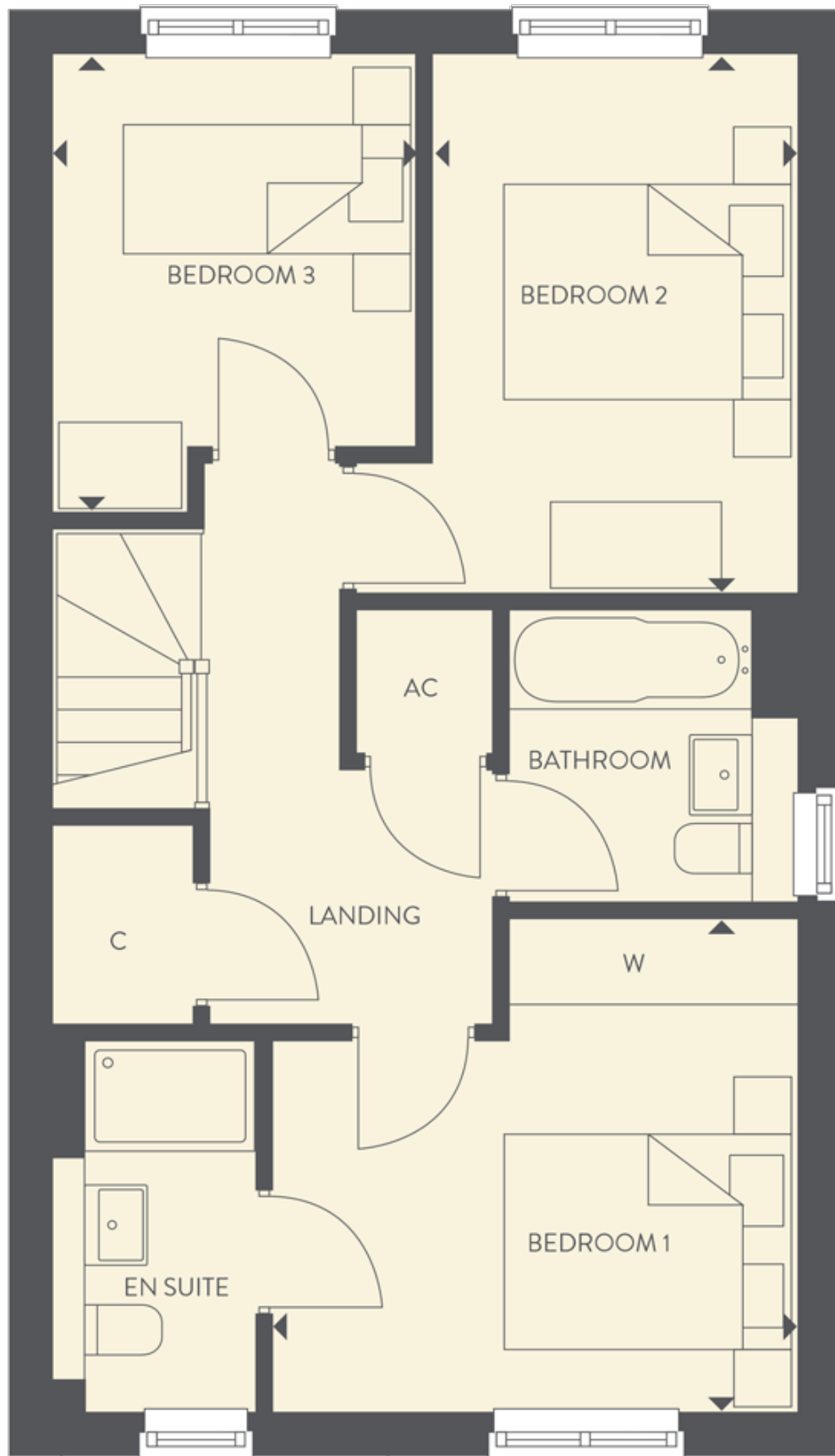
W Wardrobe

C Cupboard

AC Airing cupboard

⌀ Max dimension

First Floor



WINDOW TO
HOUSES 70, 74,
79, 82, 98, 108
& 203

Bedroom 1:

3.66m x 3.43m (12' 00" x 11' 03")

Bedroom 2:

3.76m x 2.54m (12' 04" x 8' 04")

Bedroom 3:

3.20m x 2.54m (10' 06" x 8' 04")

Key

Premier Specification

W Wardrobe

C Cupboard

AC Airing cupboard

â€ Max dimension