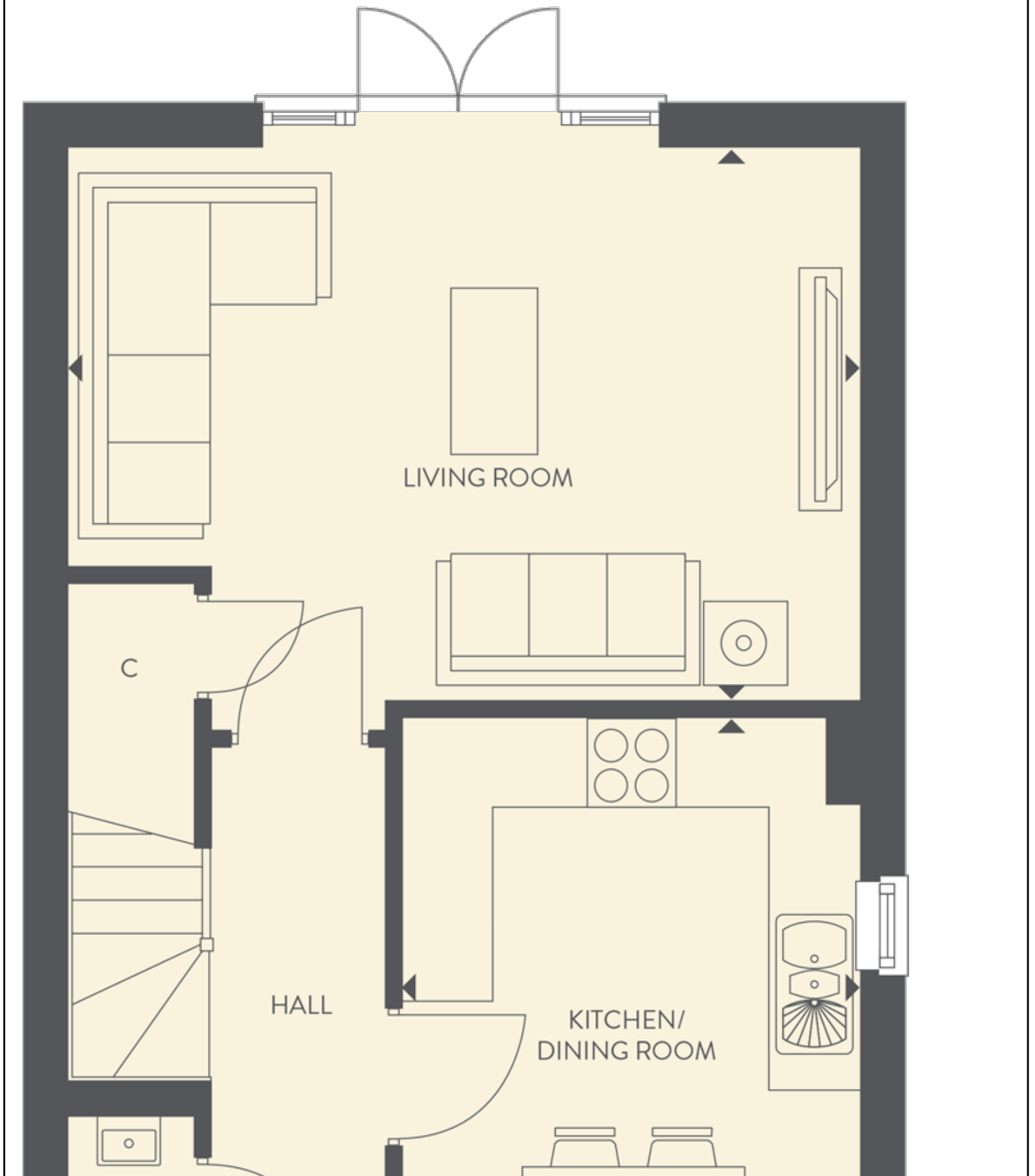
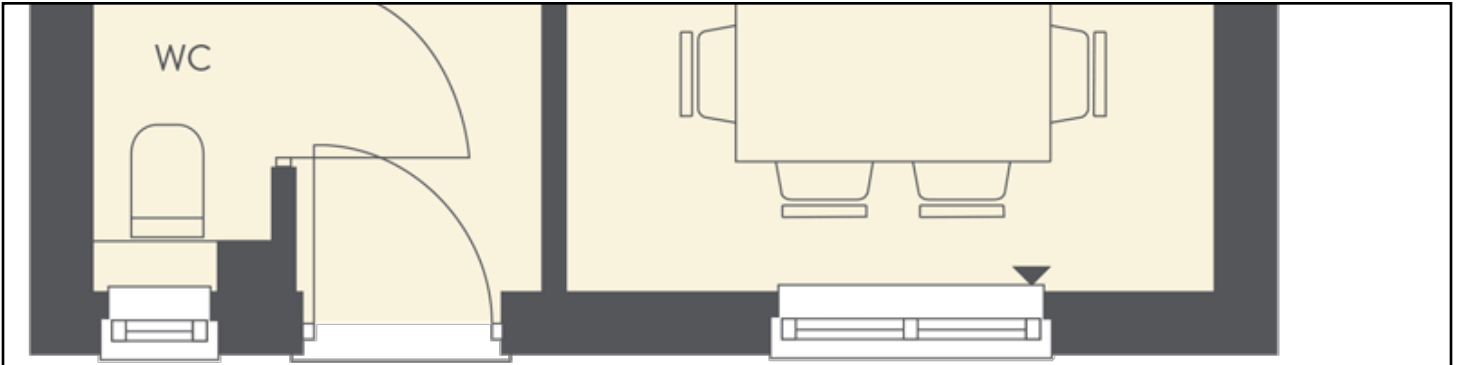


## Floor plans

### Ground Floor





**Kitchen/Dining Room:**

4.55m x 3.10m (14' 11" x 10' 02")

**Living Room:**

5.38m x 3.78m (17' 08" x 12' 05")

**Key**

Classic Specification

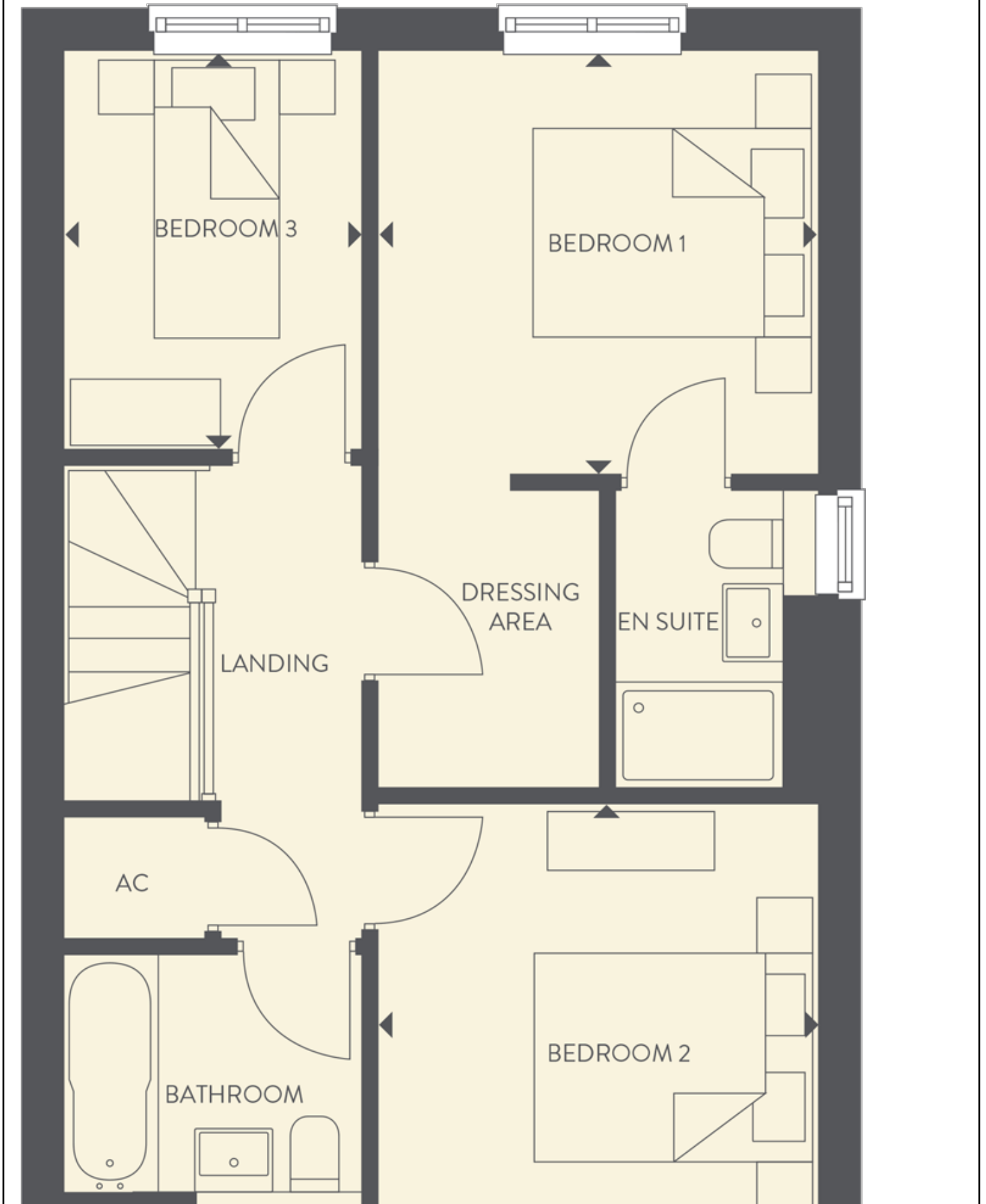
C Cupboard

AC Airing cupboard

⊕ Max dimension

\*Handed to floorplans shown

First Floor





**Bedroom 1:**

3.12m x 3.05m (10' 03" x 10' 00")

**Bedroom 2:**

3.12m x 3.02m (10' 03" x 9' 11")

**Bedroom 3:**

2.87m x 2.13m (9' 05" x 7' 00")

**Key**

Classic Specification

C Cupboard

AC Airing cupboard

⌀ Max dimension

\*Handed to floorplans shown