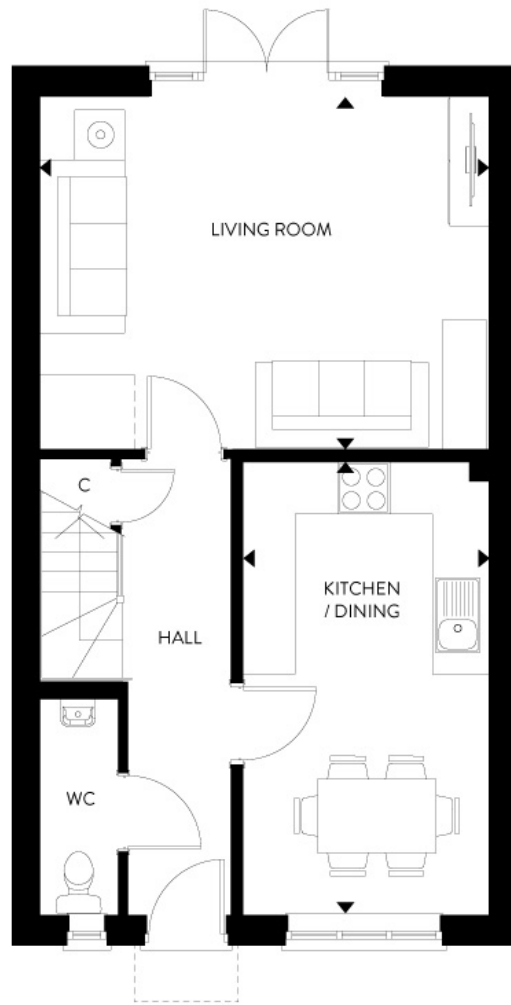


Floor plans

Ground Floor



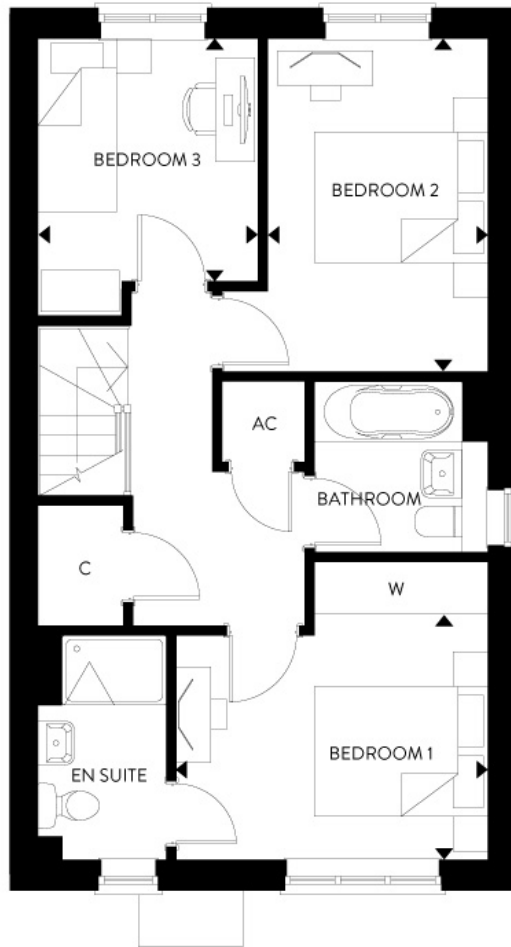
Living Room:
5.18m x 4.09m (16' 12" x 13' 05")

Kitchen/Dining Room:
5.23m x 2.84m (17' 02" x 9' 04")

Key

Some plots may be handed. Please speak to a sales advisor for more information.

First Floor



Bedroom 1:
3.58m x 3.43m (11' 09" x 11' 03")

Bedroom 2:
3.84m x 2.54m (12' 07" x 8' 04")

Bedroom 3:
3.20m x 2.54m (10' 06" x 8' 04")

Key

Some plots may be handed. Please speak to a sales advisor for more information.