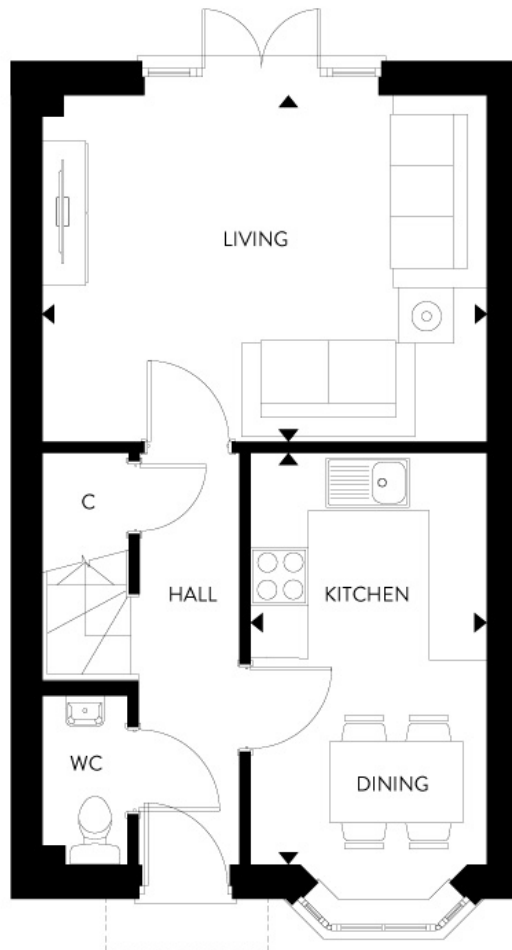


Floor plans

Ground Floor



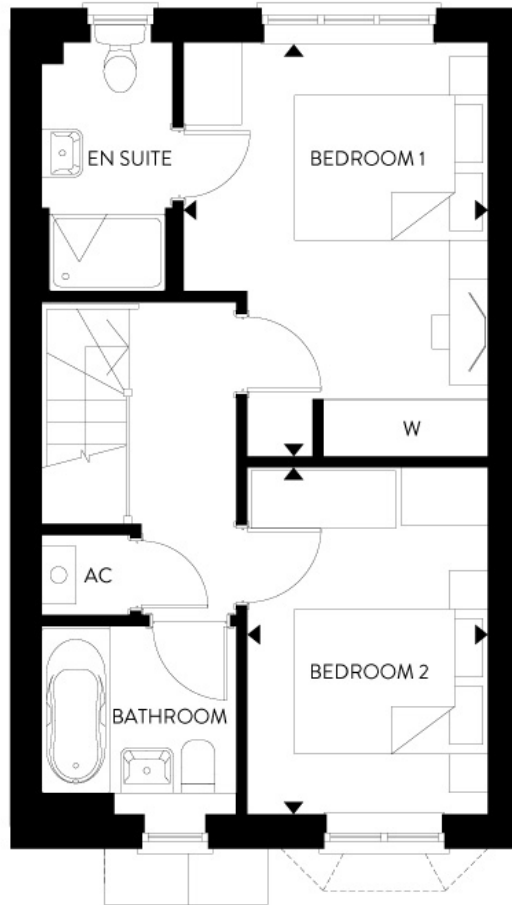
Living Room:
4.62m x 3.35m (15' 02" x 11' 00")

Kitchen/Dining:
4.34m x 2.46m (14' 03" x 8' 01")

Key

Some plots may be handed. Please speak to a sales advisor for more information.

First Floor



Bedroom 1:
4.29m x 3.15m (14' 01" x 10' 04")
Bedroom 2:
3.58m x 2.49m (11' 09" x 8' 02")
Key

Some plots may be handed. Please speak to a sales advisor for more information.