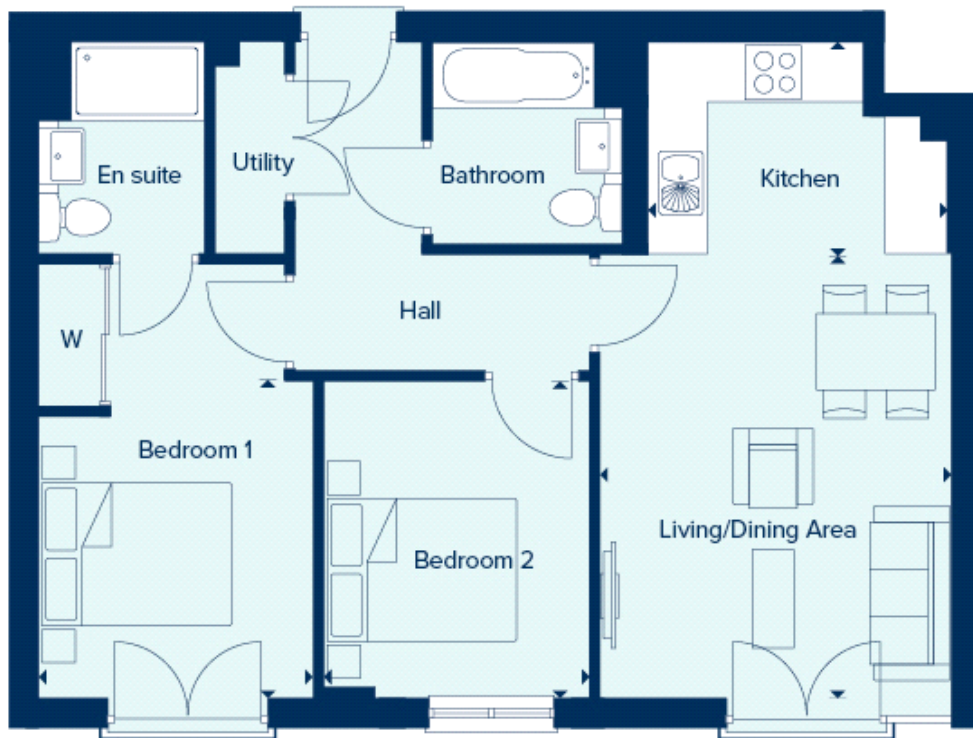


Floor plans

Apartment Type 3



Kitchen:

3.18m x 2.16m (10' 05" x 7' 01")

Living/Dining Area:

4.78m x 3.71m (15' 08" x 12' 02")

Bedroom 1:

3.35m x 2.90m (11' 00" x 9' 06")

Bedroom 2:

3.35m x 2.79m (11' 00" x 9' 02")