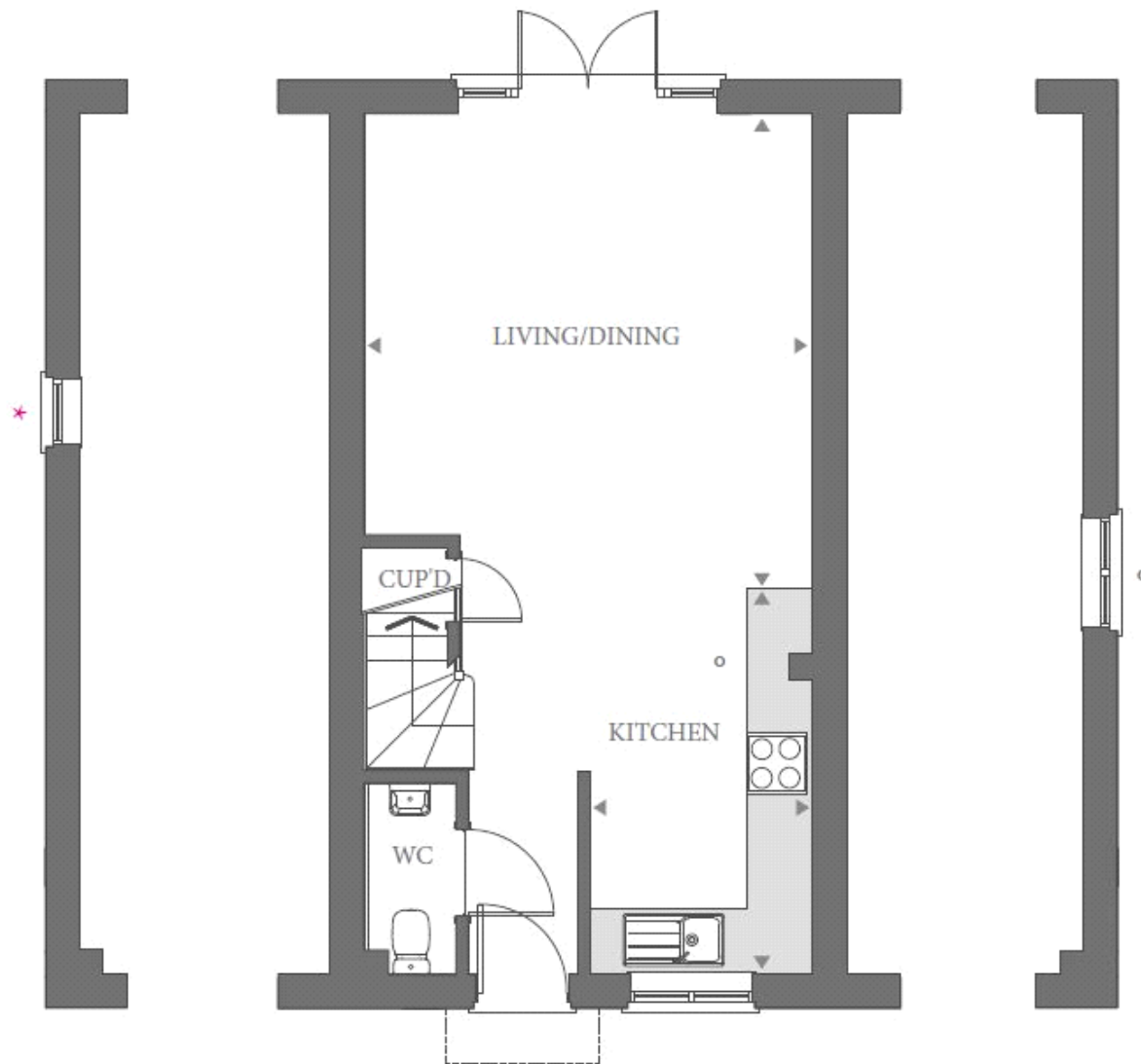


Floor plans

Ground Floor



Living/Dining:

4.65m x 4.39m (15' 03" x 14' 05")

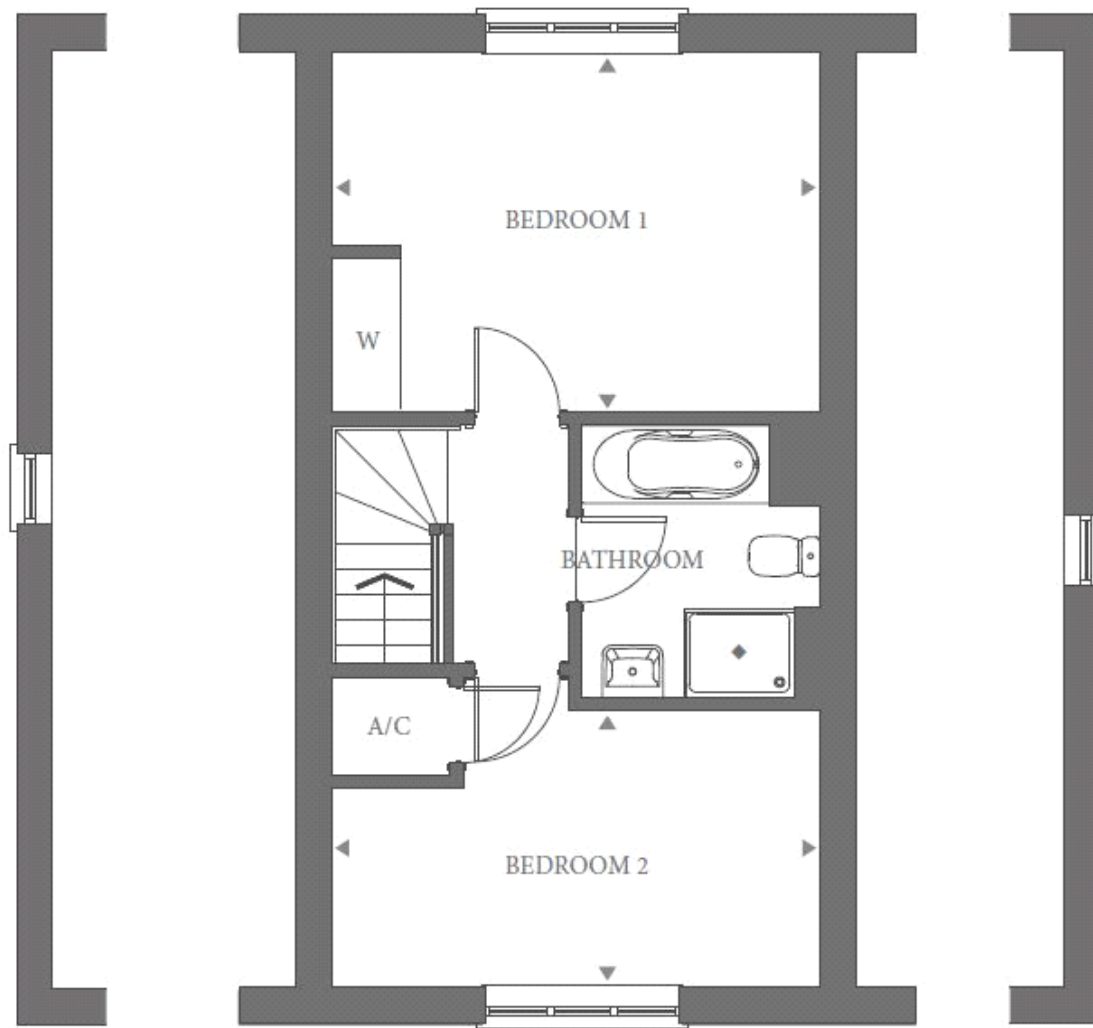
Kitchen:

3.78m x 2.18m (12' 05" x 7' 02")

Key

Please note floor plans are indicative only. Speak to a Sales Advisor for further information

First Floor



Bedroom 1:

4.39m x 3.25m (14' 05" x 10' 08")

Bedroom 2:

4.39m x 2.49m (14' 05" x 8' 02")

Key

Please note floor plans are indicative only. Speak to a Sales Advisor for further information