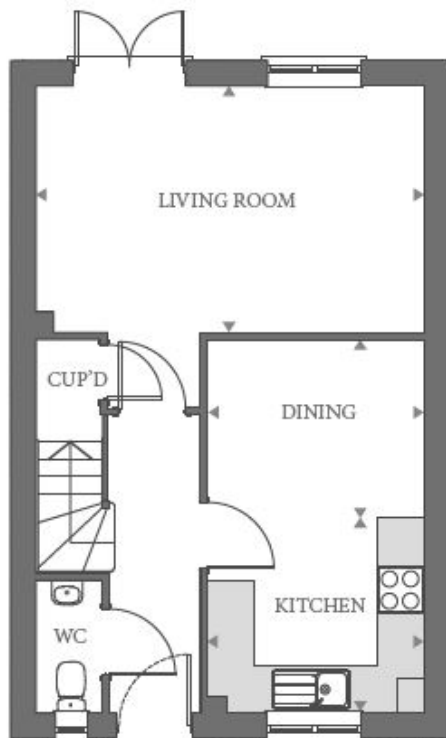


Floor plans

Ground Floor



Living Room:

4.98m x 3.15m (16' 04" x 10' 04")

Kitchen:

2.77m x 2.49m (9' 01" x 8' 02")

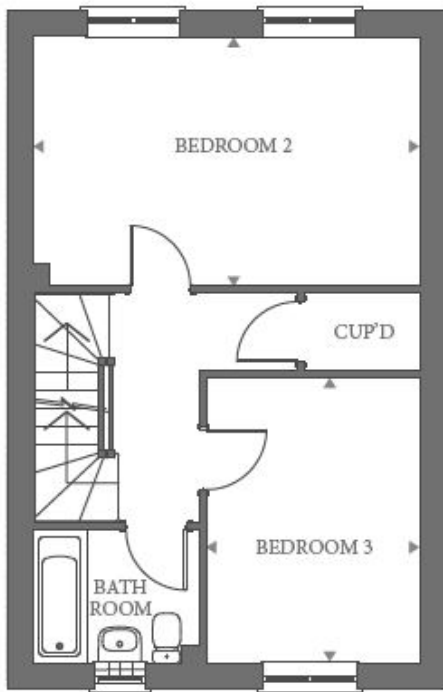
Dining:

2.77m x 2.29m (9' 01" x 7' 06")

Key

CUPâ€”MD â€” CUPBOARD W â€” WARDROBE

First Floor



Bedroom 2:

4.98m x 3.20m (16' 04" x 10' 06")

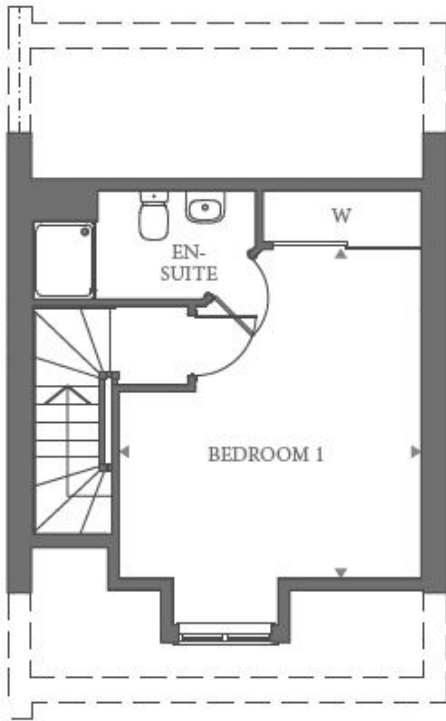
Bedroom 3:

2.72m x 3.66m (8' 11" x 12' 00")

Key

CUPâ€™D â€” CUPBOARD W â€” WARDROBE

Third floor plan



Bedroom 1:

4.22m x 3.86m (13' 10" x 12' 08")

Key

CUPâ€”D â€” CUPBOARD W â€” WARDROBE